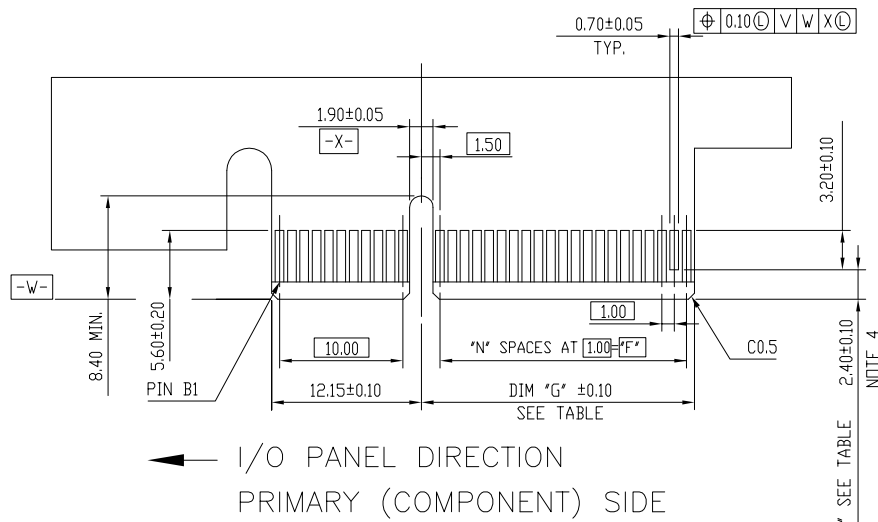
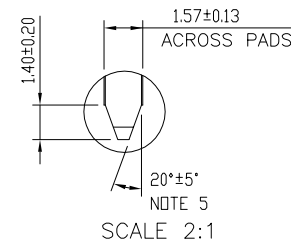
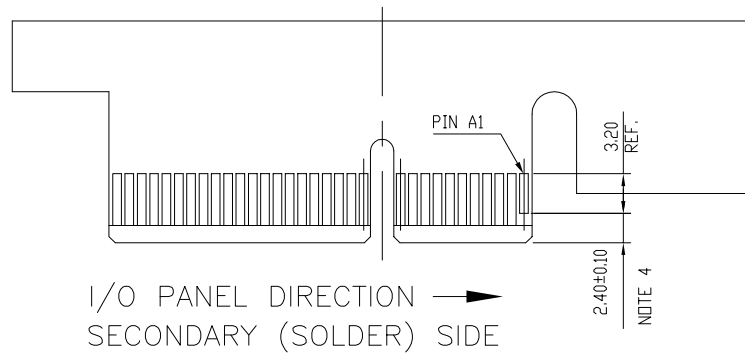
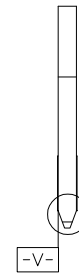


DIMENSIONS					
POSITION	A±0.20	B±0.20	C±0.20	D±0.23	E
36	7.65	27.00	9.15	25.00	6
64	21.65	41.00	23.15	39.00	20
98	38.65	58.00	40.15	56.00	37
164	71.65	91.00	73.15	89.00	70

mat'l. code		-		surface		- ✓		tolerance		ASME_Y14.5		projection		product family		PCI_EXPRESS	
lfr		ecn no		dr		date		tolerances unless otherwise specified		MM		title		PCI_EXPRESS_CARD_EDGE_GEN3 ASSEMBLY(SMT)			
B		DG-27072		ZH		2017-05-23		angles		±2'		scale N/A		dwg no		sheet 1 of 4 size	
								dr		ZHENHUA_LIU		2015-12-07		10136859		A4	
								enfr		ZHENHUA_LIU		2015-12-07		type		CUSTOMER Drawing	
								chr		STONE_LI		2015-12-07					
								appd		PM_ZHENG		2015-12-07					
sheet index		revision		B													

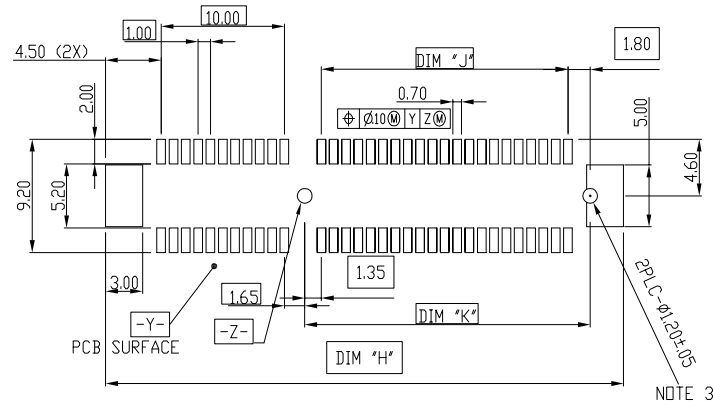


#	POS REF.	N	DIM "G"	DIM "F"	"F"
36	6	8.15	6.00	B17	
64	20	22.15	20.00	B31	
98	37	39.15	37.00	B48	
164	70	72.15	70.00	B81	



ADD-IN CARD EDGE-FINGER DIMENSIONS

mat'l. code		-		surface		- ✓		tolerance		ASME_Y14.5		projection		product family		PCI_EXPRESS			
lfr		ecn no		dr		date		tolerances unless otherwise specified		$\text{Ø}$ $\text{MM}$		title		PCI_EXPRESS_CARD_EDGE_GEN3		5			
								angles		$\frac{\text{Line}}{\text{Angle}}$		$\frac{\text{Line}}{\text{Angle}}$		ASSEMBLY(SMT)					
								±2'		.02±0.30		scale N/A		dwg no		sheet 2 of 4 size			
				dr		ZHENHUA_LIU		2015-12-07		.00±0.20				10136859		A4			
				enfr		ZHENHUA_LIU		2015-12-07		.000±0.10				type		CUSTOMER Drawing		B	
				chr		STONE_LI		2015-12-07											
				appd		PM_ZHENG		2015-12-07											
sheet index		revision sheet		B															



RECOMMENDED PCB LAYOUT, PAD TYPE

DIMENSIONS				
POSITION	E	H ±0.10	J	K±0.10
36	6	28.00	6.00	9.15
64	20	42.00	20.00	23.15
98	37	59.00	37.00	40.15
164	70	92.00	70.00	73.15

mat'l. code		-		surface		- ✓		tolerance		ASME_Y14.5		projection		product family		PCI_EXPRESS	
lfr		ecn no		dr		date		tolerances unless otherwise specified		angles		MM		title		PCI_EXPRESS_CARD_EDGE_GEN3 ASSEMBLY(SMT)	
								±2'		.0±0.30		scale N/A		dwg no		sheet 3 of 4 size	
				dr		ZHENHUA_LIU		2015-12-07		.00±0.20		Amphenol FCI		10136859		A4	
				enfr		ZHENHUA_LIU		2015-12-07		.000±0.10				type		CUSTOMER Drawing	
				chr		STONE_LI		2015-12-07									
sheet index		revision sheet		B													

NOTES:

1.MATERIAL:

HOUSING: NYLON, GLASS FILLED UL94V-0 RATE, SUITABLE FOR I.R.SOLDERING.  
 TERMINAL: COPPER ALLOY  
 PLATING: SEE PRODUCT NUMBER CODE  
 METAL PADS: COPPER ALLOY  
 FINISH: TIN OVER NICKEL

2.PRODUCT SPECIFICATION: GS-12-390.PACKAGING SPECIFICATION: GS-14-1451

③THE HORIZONTAL AXIS FOR THE PAD PATTERN IS ESTABLISHED BY  
 A LINE THROUGH THE CENTER OF THE TWO Ø1.0 HOLES.

THE VERTICAL AXIS IS 90° TO THE HORIZONTAL AXIS, THROUGH THE CENTER OF DATUM -Z-

④NO TIE BAR PERMITTED FROM CARD EDGE TO LEADING EDGE OF PAD FOR PINS A1 AND PIN NUMBERS "F".

⑤CHAMFER EDGES MUST BE FREE OF CUTTING BURRS.

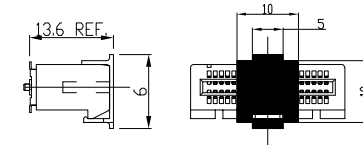
6.ROHS COMPATIBLE PRODUCT SPECIFICATIONS

a - PLATING:

- "LF" MEANS THE PRODUCT IS LEAD-FREE

b - MANUFACTURING PROCESS COMPATIBILITY

- THE HOUSING WILL WITHSTAND EXPOSURE TO 260°C±5°C PEAK TEMPERATURE FOR  
 5 SECONDS IN A CONVECTION, INFRA-RED OR VAPOR PHASE REFLOW OVEN.



POSITION OF CAP

PRODUCT NUMBER CODE

10136859 - X X X X L F

HOUSING COLOR OPTIONS  
 1-BLACK

TERMINAL PLATING OPTIONS  
 0-50u" Ni UNDERPLATE  
 30u" Au CONTACT AREA  
 100u" TIN TAIL AREA -----COMPATIBLE RoHS  
 1-50u" Ni UNDERPLATE  
 15u" Au CONTACT AREA  
 100u" TIN TAIL AREA -----COMPATIBLE RoHS  
 2-50u" Ni UNDERPLATE  
 GOLD FLASH CONTACT AREA  
 100u" TIN TAIL AREA -----COMPATIBLE RoHS

LEAD FREE OPTION

PACKAGING OPTIONS  
 P-TAPE & REEL PACKAGING WITH CAP (FOR 98P OPTIONS ONLY) B  
 Y-HARD TRAY PACKAGING (FOR 164P OPTION ONLY)  
 Z-HARD TRAY PACKAGING WITH MYLAR(FOR 164P OPTION ONLY)  
 F-HARD TRAY PACKAGING WITH CAP (FOR 164P OPTION ONLY)

PDS OPTIONS  
 0-36  
 1-64  
 2-98  
 3-164

mat'l. code		-		surface		- ✓		tolerance		ASME_Y14.5		projection		product family		PCI_EXPRESS	
lfr	ecn no	dr	date	tolerances unless otherwise specified								title		PCI_EXPRESS_CARD_EDGE_GEN3			
				angles	lineal	.0±0.30		MM		scale N/A		ASSEMBLY(SMT)		5			
				±2'	lineal	.00±0.20						dwg no		sheet 4 of 4			
					lineal	.000±0.10						10136859		A4			
				dr	ZHENHUA_LIU	2015-12-07						type		CUSTOMER Drawing			
				enfr	ZHENHUA_LIU	2015-12-07											
				chr	STONE_LI	2015-12-07											
				appd	PM_ZHENG	2015-12-07											
sheet index	revision	B															