

4

3

2

1

THIS DRAWING IS UNPUBLISHED.

RELEASED FOR PUBLICATION

© COPYRIGHT

ALL RIGHTS RESERVED.

LOC

DIST


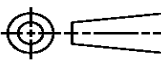
REVISIONS

P	LTR	DESCRIPTION	DATE	DWN	APVD
	A1	ECR-14-002912	26FEB2014	GK	HMR

REPLACED BY OCEAN STYLE APPLICATOR PART  
NUMBER 2150296-1

FOR REPLACEMENT PARTS FOR APPLICATOR 1339820  
REFER TO ADDITIONAL PAGE(S). SPARE PARTS KIT (IF LISTED)  
WILL REMAIN AVAILABLE.

THE REPLACEMENT OCEAN STYLE APPLICATOR HAS THE  
SAME TERMINATOR/PRESS INTERFACE AS APPLICATOR  
1339820

THIS DRAWING IS A CONTROLLED DOCUMENT.		DWN GOPALAKRISHNA HV		 TE Connectivity			
DIMENSIONS:		CHK RAGHAVENDRA					
		APVD RAGHAVENDRA		NAME END FEED HDI APPLICATOR			
		PRODUCT SPEC					
		APPLICATION SPEC					
MATERIAL		WEIGHT		SIZE A3	CAGE CODE	DRAWING NO C- 1339820	RESTRICTED TO
FINISH		CUSTOMER DRAWING		SCALE		SHEET 1 OF 2	REV A1

THIS DRAWING IS UNPUBLISHED.		RELEASED FOR PUBLICATION		20
COPYRIGHT 20 BY TYCO ELECTRONICS CORPORATION. ALL RIGHTS RESERVED.				
PART NUMBER	REV	TERMINATOR	FEED TYPE	DESCRIPTION
1339820-1	A	BENCH & LEADMAKER	MECH POST FEED	HDI APPLICATOR
7-1339820-1	A	BENCH & LEADMAKER	MECH POST FEED	-1 AND SPARE PARTS
7-1339820-7	A	-	-	SPARE PARTS KIT

SET UP GAGE  
458638-3

REVISIONS				
REV	DATE	DESCRIPTION	BY	APPV
A	16AUG2007	FIRST RELEASE	LJL	MC

CRIMP DATA		TE TERMINAL	TE CRIMP SPECS
TERMINAL NAME: -			
CRIMP	SIZE	TYPE	RANGE
WIRE	3.56 [.140 IN]	F	1.00-2.50mm <sup>2</sup>
INSUL	4.57 [.180 IN]	F	2.54-3.81 [.100-.150 IN]
WIRE STRIP LENGTH 4.80-5.60 [.189-.220 IN]		APPL INSTRUCTIONS 408-8323	
TERMINAL APPL SPEC		114-3118	FEED 27.84 [.096 IN]
TERMINALS APPLIED			
160789	-	-	-
-	-	-	-
-	-	-	-
-	-	-	-
-	-	-	-
WIRE SIZE	CRIMP HEIGHT	PIN PN & LENGTH [IN]	
2.50mm <sup>2</sup>	2.29 ±0.05 [.090 ±.002 IN]	5-354778-4[.2765]	
2.00mm <sup>2</sup>	2.18 ±0.05 [.086 ±.002 IN]	6-354778-2[.2805]	
1.50mm <sup>2</sup>	2.06 ±0.05 [.081 ±.002 IN]	7-354778-3[.2860]	
1.00mm <sup>2</sup>	1.96 ±0.05 [.077 ±.002 IN]	8-354778-2[.2905]	
-	-		
-	-		
-	-		
-	-		
-	-		
-	-		
-	-		
-	-		



RECOMMENDED SPARE PARTS

2. GREASE RAM, CAM, CAM FOLLOWER AND FEED ROD LIGHTLY.

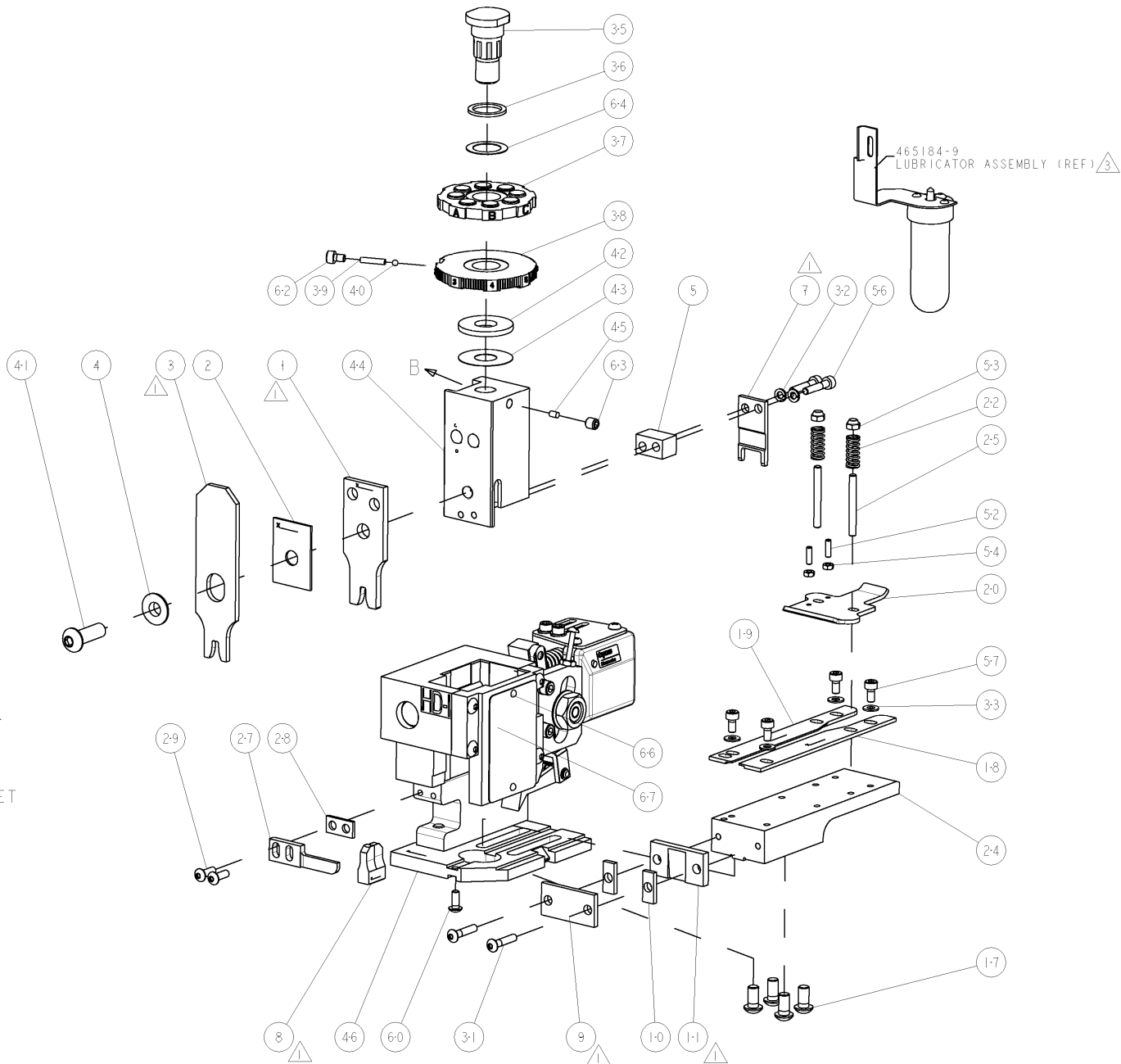
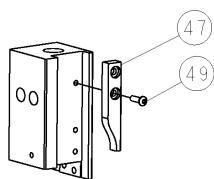
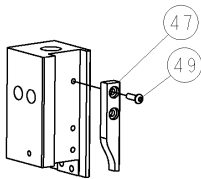
CERTAIN TERMINALS REQUIRE LUBRICATION. REFER TO THE APPLICATOR INSTRUCTION SHEET FOR MORE INFORMATION.

4. LUBRICATE DAILY PER THE APPLICATOR INSTRUCTION SHEET SUPPLIED WITH THE APPLICATOR.

VIEW B ROTATED 180°

POST-FEED 40mm STROKE

POST-FEED 30mm STROKE



-	1	1	1338705-2	DOCUMENTATION PACKAGE	71
-	1	1	461264-1	PLATE, IDENTIFICATION	67
-	2	2	21017-2	SCREW, DRIVE	66
-	1	1	986950-1	WASHER, FLAT PRECISION	64
-	1	1	3-18031-0	SCR, SET, CUP POINT M6 X 6.0	63
-	1	1	18023-9	SCR, SKT HD CAP M4 X 6.0	62
-	1	1	18024-7	SCR, BTN SKT HD CAP (M4 X 10.0)	60
-	4	4	1-18023-0	SCR, SKT HD CAP M4 X 8.0	57
-	2	2	1-18023-4	SCR, SKT HD CAP M4 X 20.0	56
-	2	2	18029-1	NUT, HEX, REG M3	54
-	2	2	986965-1	NUT, LOCK, HEX, TORQUE (M4)	53
-	2	2	2-18032-2	SCR, SET, FLT POINT M3 X 10.0	52
-	1	1	18024-3	SCR, BTN SKT HD CAP (M3 X 10.0)	49
-	1	1	1338676-1	CAM, UNIVERSAL POST-FEED	47
-	1	1	1338662-1	SUB ASSY, APPLICATOR FRAME	46
-	1	1	690191-1	PLUG, NYLON	45
-	1	1	1320998-1	RAM	44
-	1	1	690125-1	SHIM SUB-ASSY	43
-	1	1	690124-1	WASHER, RAM (.115)	42
-	1	1	2-18024-6	SCR, BTN SKT HD CAP (M8 X 25.0)	41
-	1	1	23241-1	BALL, STEEL	40
-	1	1	2-22278-7	SPRING, COMPRESSION	39
-	1	1	1320922-1	DISC, ADJUST, INSULATION CRIMP	38
-	1	1	354777-1	WIRE DISC, ASSEMBLY	37
-	1	1	22480-5	SPRING, COMPRESSION	36
-	1	1	690212-1	POST, RAM	35
-	4	4	18027-2	WASHER, FLAT, REG M4	33
-	2	2	18025-2	WASHER, SPRG LOCK, REG M4	32
-	2	2	1-18024-0	SCR, BTN SKT HD CAP (M4 X 20.0)	31
-	2	2	18024-8	SCR, BTN SKT HD CAP (M4 X 12.0)	29
-	1	1	3-690451-2	SPACER, STRIPPER	28
-	1	1	240639-1	STRIPPER (MACHINING)	27
-	2	2	1320906-1	STUD, THREADED	25
-	1	1	1320995-1	PLATE, STRIP GUIDE	24
-	2	2	4-22281-1	SPRING, DRAG	22
-	1	1	1338665-1	DRAG	20
-	1	1	2-458030-7	STRIP GUIDE, REAR	19
-	1	1	2-458031-7	STRIP GUIDE, FRONT	18
-	4	4	1-18024-8	SCR, BTN SKT HD CAP (M6 X 12.0)	17
-	1	1	240644-1	PLATE, REAR SHEAR	11
-	2	2	1-240645-2	SPACER, SHEAR PLATE	10
-	1	1	240642-1	PLATE, FRONT SHEAR	9
-	1	2	133222-8	ANVIL, COMBINATION	8
-	1	1	2-240651-1	BLADE, SLUG	7
-	-	-	-	-	6
-	1	1	2-240641-6	SPACER	5
-	1	1	238009-1	BLOCK, FL CRIMPER SPACER	4
-	1	2	6-456134-1	CRIMPER, INSULATION F PREMIUM	3
-	1	1	1-455888-0	SPACER, CRIMPER	2
-	1	2	456411-9	CRIMPER, WIRE PREMIUM	1
-77	-71	-1	PART NO	DESCRIPTION	ITEM NO

THIS DRAWING IS A PROPERTY OF TYCO ELECTRONICS CORPORATION. IT IS TO BE USED FOR THE PURPOSES SPECIFIED IN THE ORDER. IT IS NOT TO BE REPRODUCED OR TRANSMITTED IN ANY FORM OR BY ANY MEANS, ELECTRONIC OR MECHANICAL, INCLUDING PHOTOCOPYING, RECORDING, OR BY ANY INFORMATION STORAGE AND RETRIEVAL SYSTEM, WITHOUT THE WRITTEN PERMISSION OF TYCO ELECTRONICS CORPORATION.		OWN L LOFTHOUSE	DATE 16AUG2007	Tyco Electronics Harrisburg, PA 17105-3608	
DIMENSIONS: INCHES		CR -	NAME M. CLIFFORD	END FEED HDI APPLICATOR	
TOLERANCES UNLESS OTHERWISE SPECIFIED: 0 PLC 1 PLC 2 PLC 3 PLC 4 PLC ANGLES		APV M. CLIFFORD	DATE 16AUG2007	-	
PRODUCT SPEC		APPLICATION SPEC	SIZE	CAGE CODE	DRAWING NO
MATERIAL		FINISH	WEIGHT	SCALE	SHEET
CUSTOMER DRAWING		SCALE	3:5	SHEET	OF
CUSTOMER DRAWING		SCALE	3:5	SHEET	OF

CUSTOMER VIEWABLE ASSEMBLY