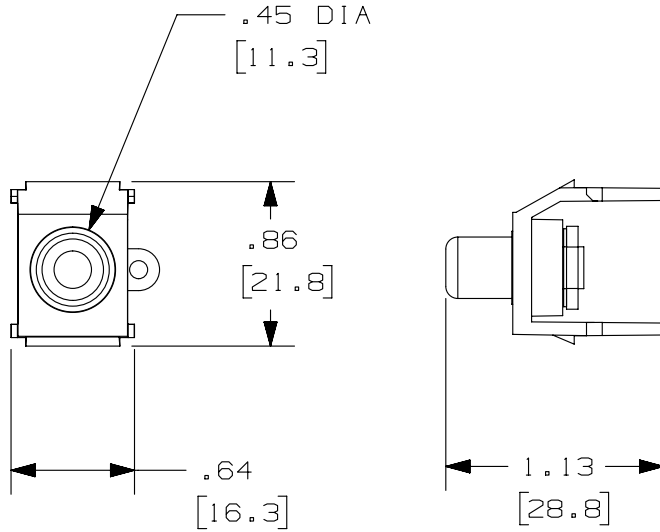


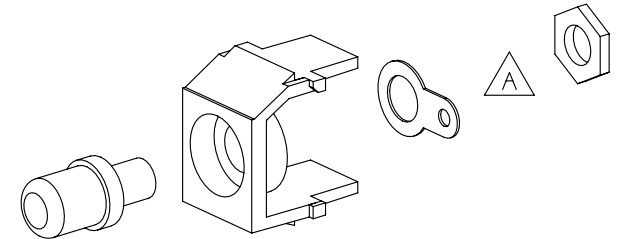
THIS COPY IS PROVIDED ON A RESTRICTED BASIS AND IS NOT TO BE USED IN ANY WAY DETRIMENTAL TO THE INTERESTS OF PANDUIT CORP.

| PANDUIT P/N | WEIGHT                         |
|-------------|--------------------------------|
| NKRSMB**Y   | .16 LB/10 PCS<br>(75 g/10 PCS) |
| NKRSMR**Y   |                                |
| NKRSMW**Y   |                                |
| NKRSMY**Y   |                                |



NOTES:

1. SEE CURRENT CATALOG FOR ADDITIONAL PART SUFFIXES TO INDICATE COLOR AND OR PACKAGE QUANTITY.
2. DIMENSIONS IN [ ] ARE IN METRIC.
3. PART INCLUDES:
  - 1- MODULE BASE
  - 1- RCA CONNECTOR
  - 1- GROUNDING RING
  - 1- HEX NUT



|             |           |                       |     |
|-------------|-----------|-----------------------|-----|
| PART NUMBER | SEE TABLE | PRODUCT SPEC/PKG SPEC | N/A |
| I.I. NUMBER | N/A       | WORK INSTRUCTION      | N/A |

|                               |  |
|-------------------------------|--|
| TITLE                         |  |
| NETKEY RCA SOLDER TYPE MODULE |  |
| CUSTOMER DRAWING              |  |

|                    |                    |                |
|--------------------|--------------------|----------------|
| ITEM REVISION NAME | M02479PD/00        | <b>PANDUIT</b> |
| DATASET FILE NAME  | M02479PD_DC367/00B |                |

|   |                      |                              |     |
|---|----------------------|------------------------------|-----|
| UNLESS OTHERWISE SPECIFIED, DIMENSIONAL TOLERANCES ARE: IN [ mm ] |                      | MATERIAL:                    | ABS |
| .x ± .1 [ 2.54 ]  | .xxx ± .005 [ .127 ] | DRAWING NUMBER:<br>02479-367 |     |
| .xx ± .01 [ .25 ]   | ANGLES ± 5 °         |                              |     |
|   |                      | THIRD ANGLE PROJECTION       |     |

| REV | DATE    | BY  | CHK | APR | DESCRIPTION                        | ECN       |
|-----|---------|-----|-----|-----|------------------------------------|-----------|
| 1   | 12-2-13 | BJN | JSP | JCK | A. REMOVED LOCK WASHER FROM MODULE | 02479-367 |
| R   | 8-9-06  | JSP | MJD | MJD | RELEASED TO PRODUCTION             | 02479-367 |

|          |        |     |       |            |      |
|----------|--------|-----|-------|------------|------|
| DRAWN BY | DATE   | CHK | SCALE | SHT 1 OF 1 | SIZE |
| JSP      | 8-9-06 | MJD | NONE  |            | A    |

D10100DA/14