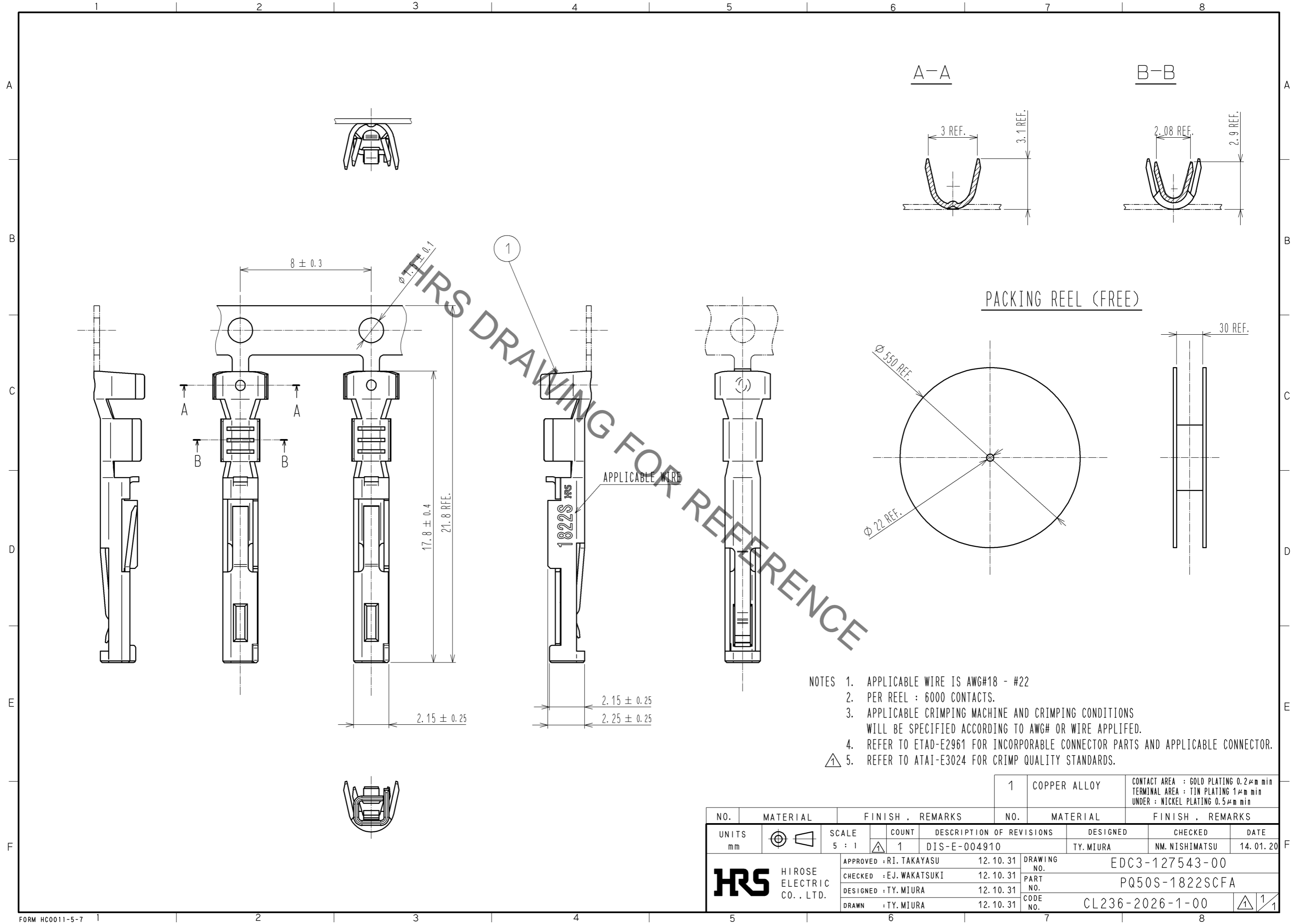


Jul.1.2019 Copyright 2019 HIROSE ELECTRIC CO., LTD. All Rights Reserved.  
 In case of consideration for using Automotive equipment / device which demand high reliability, kindly contact our sales window correspondents.



- NOTES
1. APPLICABLE WIRE IS AWG#18 - #22
  2. PER REEL : 6000 CONTACTS.
  3. APPLICABLE CRIMPING MACHINE AND CRIMPING CONDITIONS WILL BE SPECIFIED ACCORDING TO AWG# OR WIRE APPLIED.
  4. REFER TO ETAD-E2961 FOR INCORPORABLE CONNECTOR PARTS AND APPLICABLE CONNECTOR.
  5. REFER TO ATAI-E3024 FOR CRIMP QUALITY STANDARDS.

NO.		MATERIAL		FINISH . REMARKS		NO.		MATERIAL		FINISH . REMARKS	
		1		COPPER ALLOY				CONTACT AREA : GOLD PLATING 0.2µm min		TERMINAL AREA : TIN PLATING 1µm min	
								UNDER : NICKEL PLATING 0.5µm min			
UNITS		SCALE		COUNT		DESCRIPTION OF REVISIONS		DESIGNED		CHECKED	
mm		5 : 1		1		DIS-E-004910		TY. MIURA		NM. NISHIMATSU	
						APPROVED : RI. TAKAYASU 12.10.31		DRAWING NO.		EDC3-127543-00	
						CHECKED : EJ. WAKATSUKI 12.10.31		PART NO.		PQ50S-1822SCFA	
						DESIGNED : TY. MIURA 12.10.31		CODE NO.		CL236-2026-1-00	
						DRAWN : TY. MIURA 12.10.31				1/1	