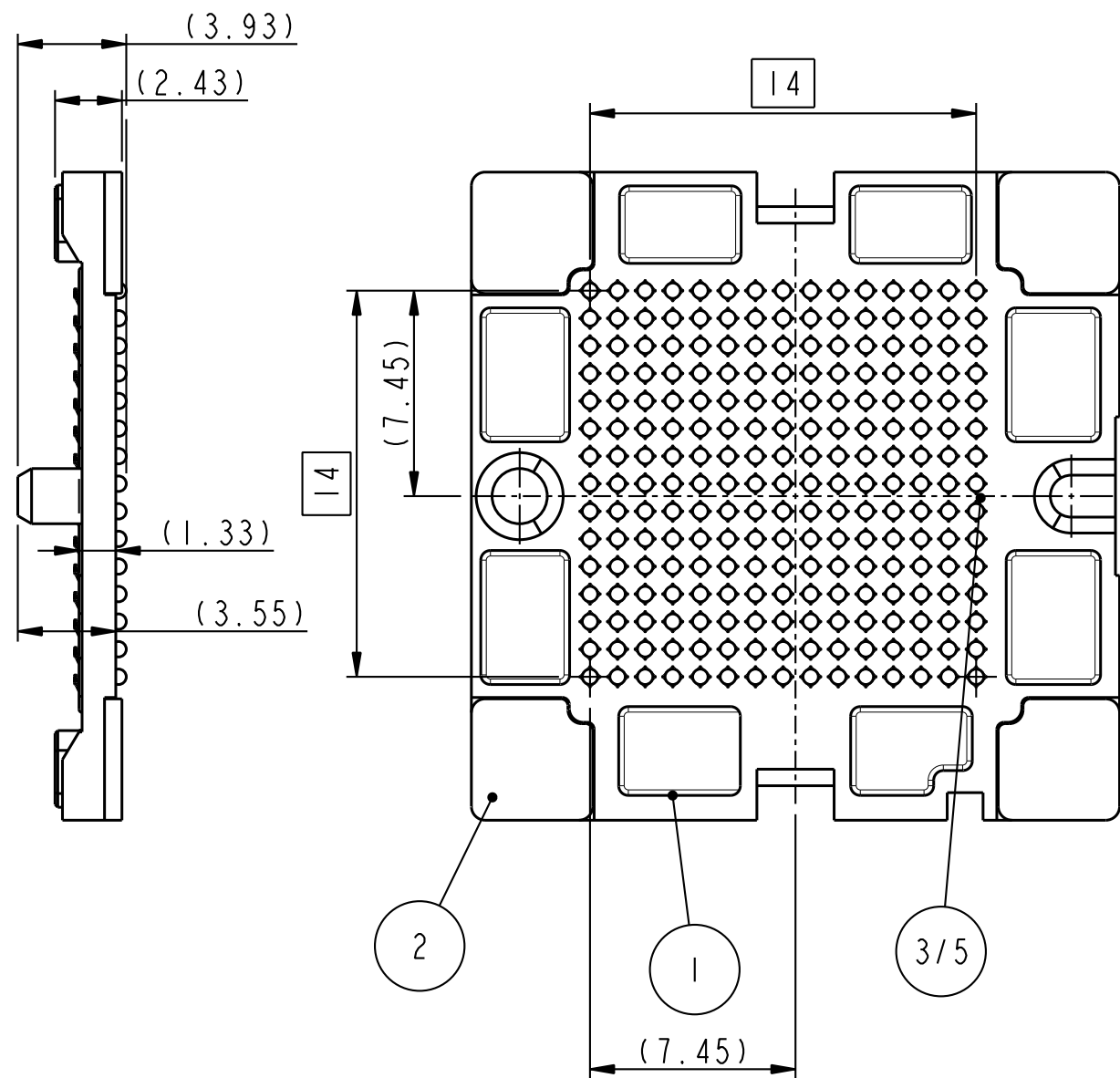
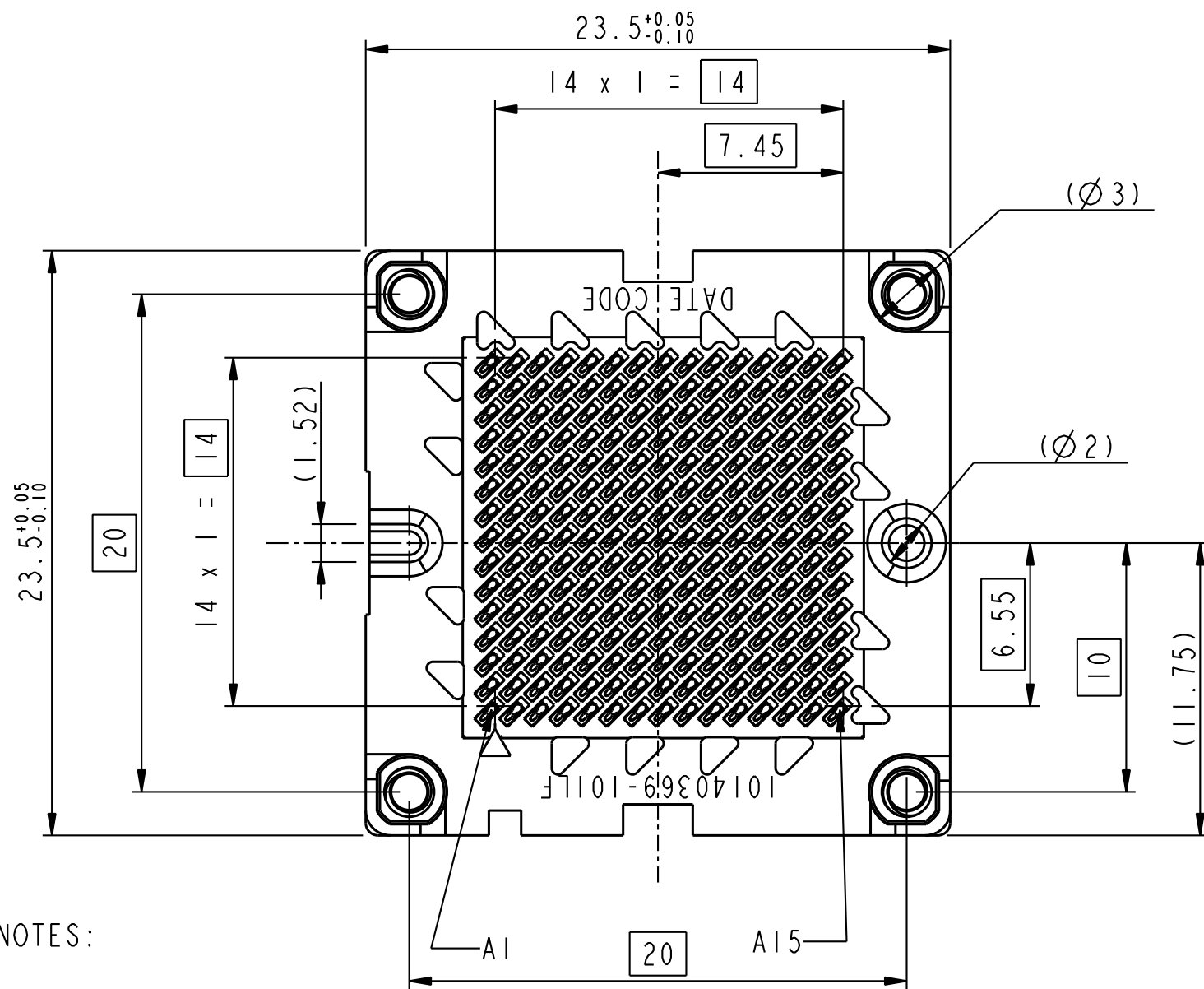


| | |
|----------------|---------------|
| PRODUCT NUMBER | PACKAGING |
| 10140369-101LF | STANDARD TRAY |

| S.NO | DESCRIPTION | MATERIAL | QTY |
|------|----------------------------|------------------------|-----|
| 1 | LGA\BGA INTERPOSER HOUSING | LCP | 1 |
| 2 | SCREW INSERT | BRASS | 4 |
| 3 | SOLDER BALL | SAC 305 ALLOY | 225 |
| 4 | VACUUM CAP | LCP | 1 |
| 5 | CONTACT | Cu Alloy Au over Ni | 225 |



NOTES:

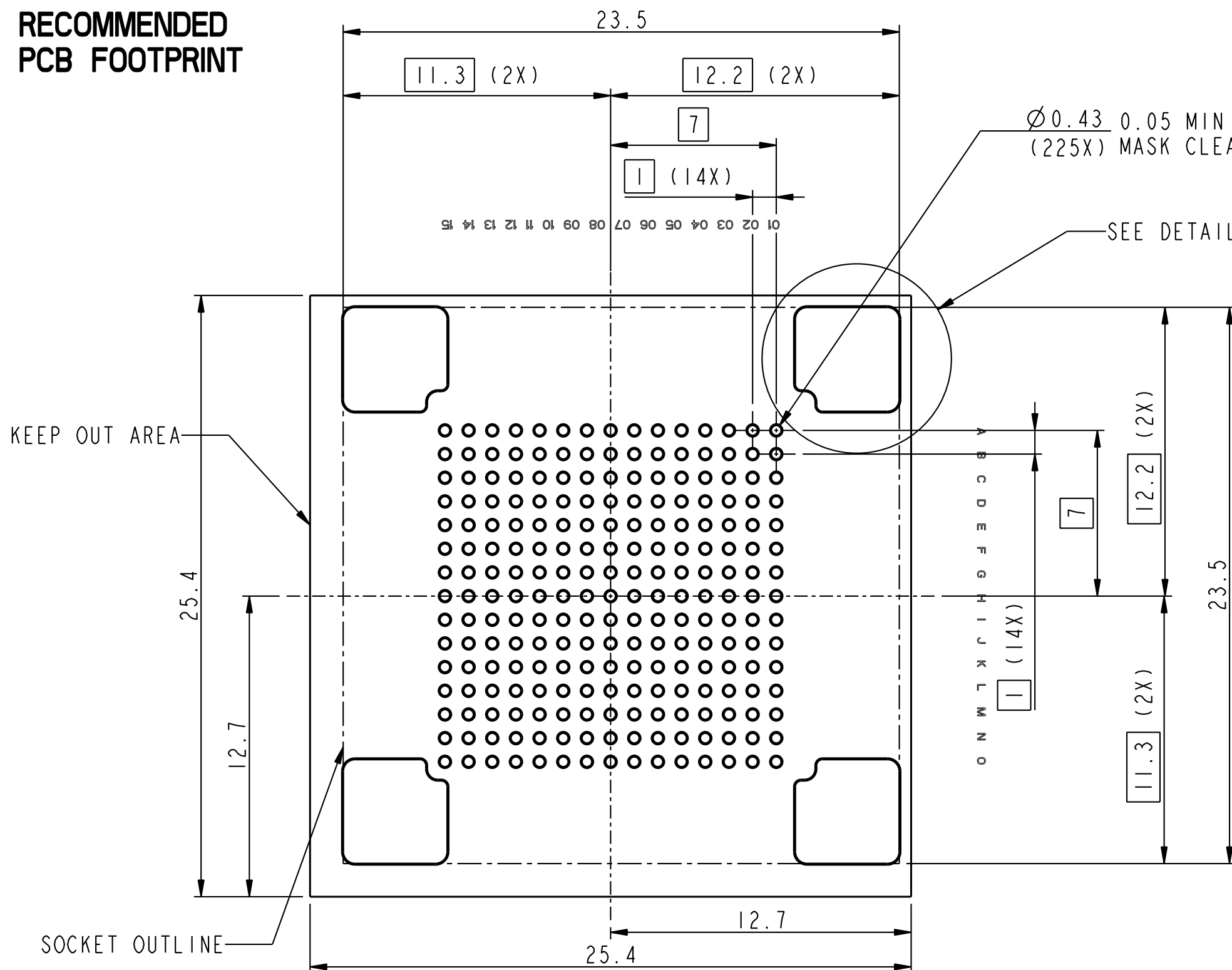
1. SOCKET CONTAINS 15 X 15 CONTACT POSITIONS
2. SPRING FORCE = 0.32N PER CONTACT
3. IN DEFLECTED POSITION, SPRING TIP MUST BE FLUSH WITH HOUSING SURFACE
4. FITS WITH FCI TRANSCEIVER PN:10124588
5. APPLICATION SPEC: GS-20-0470
6. PRODUCT SPEC: GS-12-1293
7. PACKAGING SPEC: GS-14-2460
8. RECOMMENDED TIGHTENING TORQUE
0.073 Nm ± 0.017 Nm

| | | | | | | | | | | |
|---------------------------------------|---------------------|-------|---------------|------------------------------------|--|-----------------|--------------------|-----------------------|------------------------|----------|
| spec ref | - | dr | M Streckewald | 2016/07/08 | projection | mm | size | A3 | scale | 4:1 |
| tolerance std | ISO 406 ISO 1101 | eng | M Streckewald | 2017/09/30 | | | ecn no | - | rel level | Released |
| TOLERANCES UNLESS OTHERWISE SPECIFIED | | chr | - | - | | | product family | - | | |
| surface | linear | 0.X | ±0.3 | Amphenol FCI www.fci.com | MBO SOCKET ASSEMBLY INTERPOSER REL | | dwg no 10140369 | rev A | Product - Customer Drw | |
| | 0.XX | ±0.13 | cat. no. | | - | | | | | |
| | 0.XXX | ±0.05 | sheet 1 of 3 | | | | | | | |
| ISO 1302 | angular | 0° | ±2° | PDS: Rev :A | | STATUS:Released | | Printed: Oct 05, 2017 | | |

Amphenol FCI

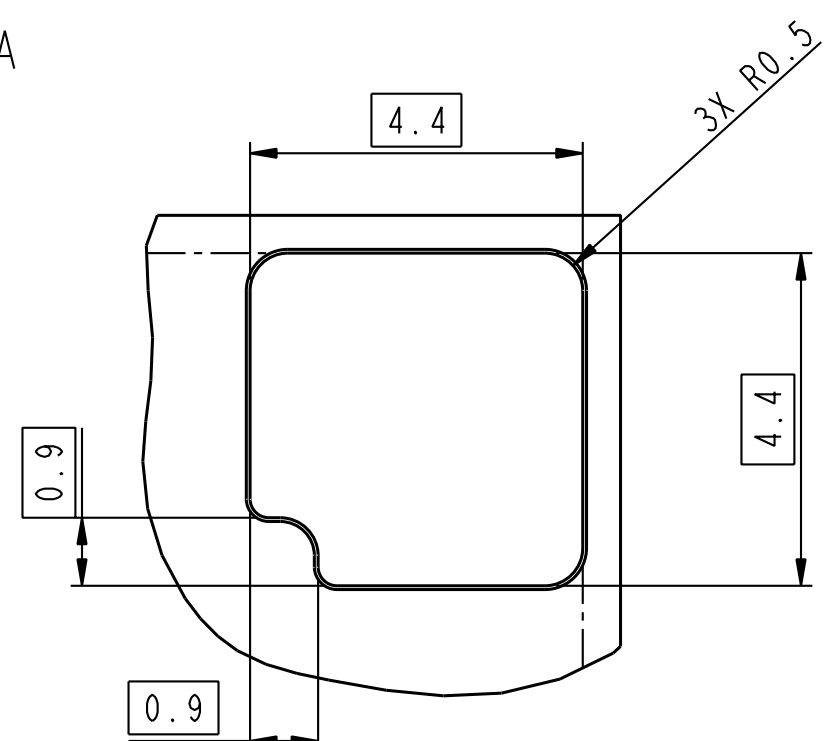
© 2016 AFCI

RECOMMENDED PCB FOOTPRINT



Ø0.43 0.05 MIN SOLDER
(225X) MASK CLEARANCE

SEE DETAIL A

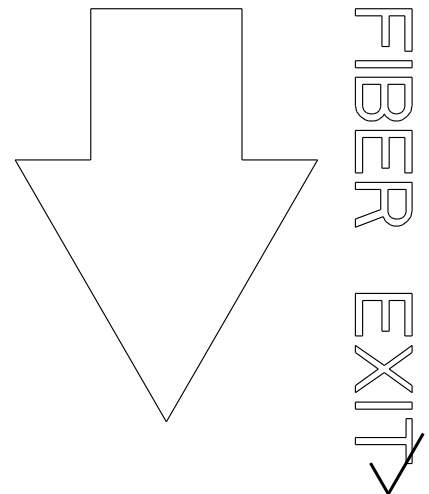


DETAIL A

CENTERLINE TO CENTERLINE SPACING: 25.4mm
SCALE 10:1
(4X)

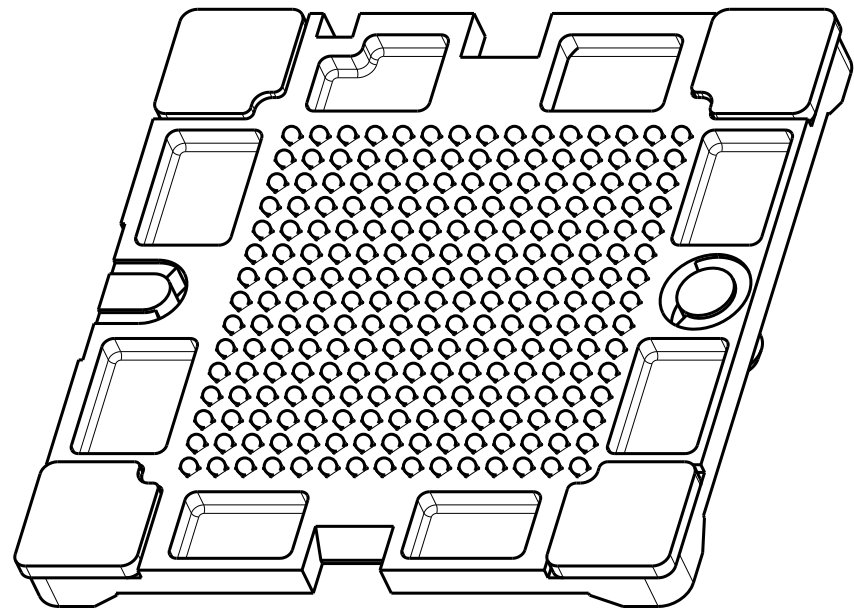
Amphenol
FCi

© 2016 AFCI

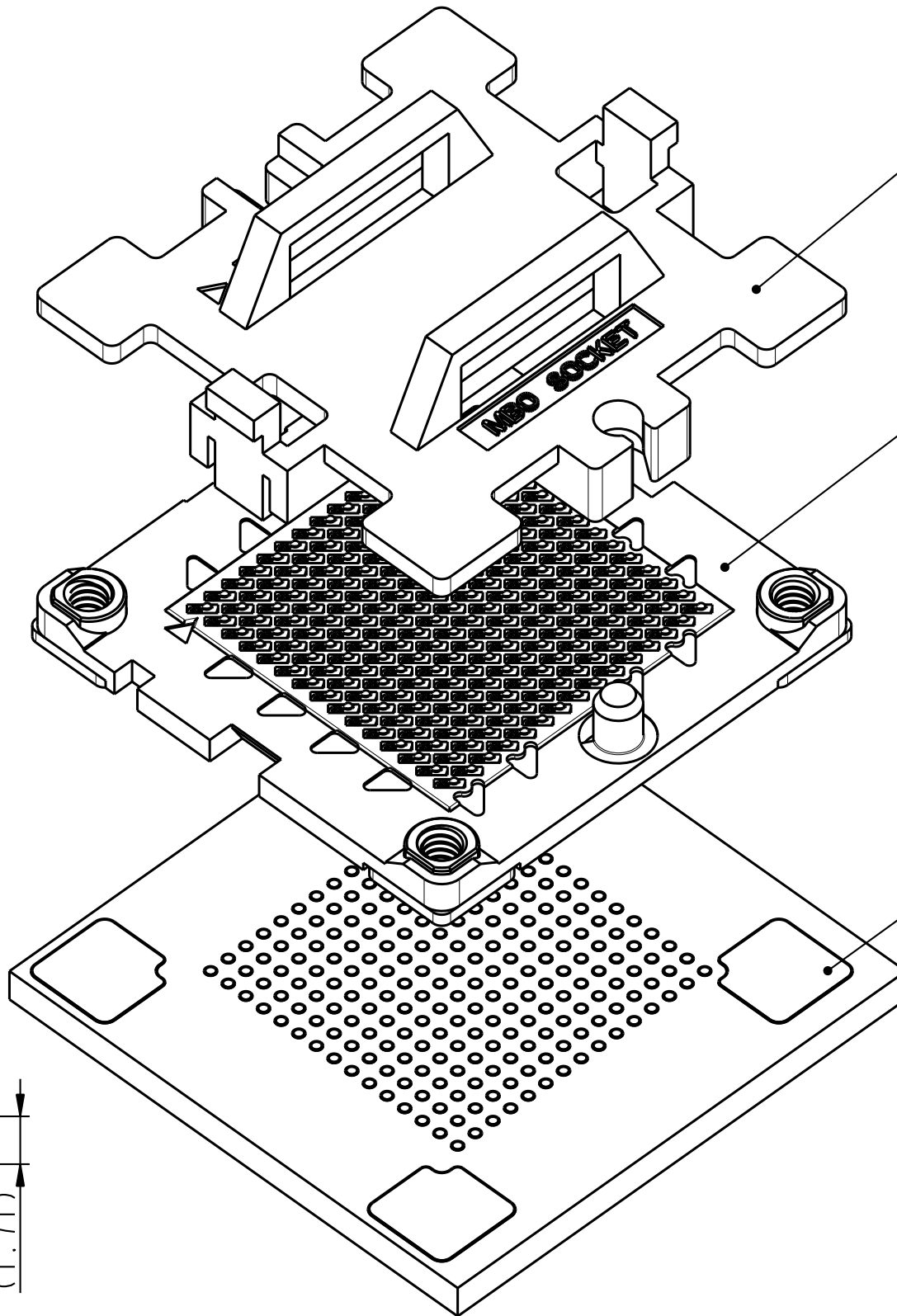


| | | | | | | | | |
|---------------------|---------------|---------------------------|----------------|----|---------------------------|----|------------------------|-----|
| dr | M Streckewald | 2016/07/08 | projection | mm | size | A3 | scale | 5:1 |
| eng | M Streckewald | 2017/09/30 | | | ecn no | | | |
| chr | - | - | | | - | | | |
| appr | C Pendleton | 2017/09/30 | product family | - | rel level Released | | | |
| Amphenol FCI | | title MBO SOCKET ASSEMBLY | | | dwg no | | 10140369 | |
| www.fci.com | | cat. no. | | | - | | Product - Customer Drw | |
| | | | | | rev | | A | |
| | | | | | sheet 2 of 3 | | | |

PRODUCT NUMBER
10140369-101LF



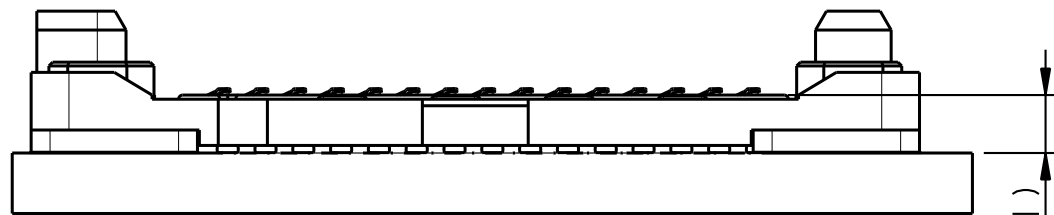
MBO SOCKET ASSEMBLY
WITHOUT PCB AND VACCUM CAP



VACUUM CAP

MBO SOCKET ASSEMBLY

PCB
(SHOWN FOR
REFERENCE)



MBO SOCKET ASSEMBLY
WITHOUT VACCUM CAP ON BOARD

SCALE 5:1

(1.71)



| | | | | | | | | |
|---------------------|---------------|---------------------------------------|----------------|----|------------------------|----------|--------------|-----|
| dr | M Streckewald | 2016/07/08 | projection | mm | size | A3 | scale | 1:1 |
| eng | M Streckewald | 2017/09/30 | | | ecn no | | - | |
| chr | - | - | | | rel level | | Released | |
| appr | C Pendleton | 2017/09/30 | product family | | - | | | |
| Amphenol FCI | | MBO SOCKET ASSEMBLY INTERPOSER REL | | | dwg no 10140369 | rev A | | |
| www.fci.com | | cat. no. | - | | Product - Customer Drw | | sheet 3 of 3 | |

Amphenol FCI

© 2016 AFCI