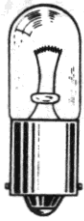


Miniature Incandescent Indicators

FOR MOUNTING IN 1/16" CLEARANCE HOLE

PER MIL-L-3661B



T-3 1/4
MINIATURE
BAYONET BASE

See lamp ratings
on page K.

MATERIALS AND FINISHES

- Mounting Bushing and Lens Holder: Brass, black nickel finish
- Mounting Nut: Brass, white nickel finish
- Internal-tooth Lockwasher: Phosphor bronze, white nickel finish
- Terminals: Solder — Brass, hot-tinned with elongated slot

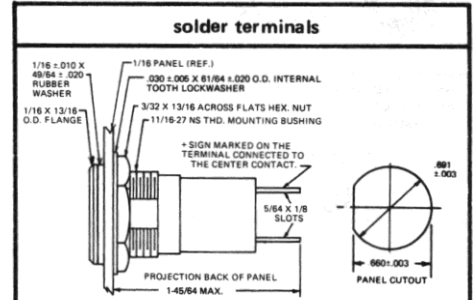
Recognized under the component
program of Underwriters'
Laboratories Inc.

75W., 125V.

373 SERIES
375 SERIES
376 SERIES

BASE PART NUMBERS

WITH SCREW-IN LENS CAPS



LH76/3 373-0410-01-203

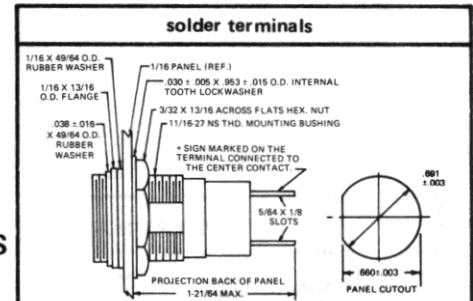
CAP PART NUMBERS

COMPLETE ASSEMBLY PART NUMBERS

	<p>LC14 81-0131-203 convex, transparent</p>	<p>373-0410-0131-203</p>
	<p>LC17 203-0131-203 convex, mech. dimmer complete blackout</p>	<p>375-0410-0131-203</p>
	<p>LC18 204-0131-203 convex, mech. dimmer semi-blackout</p>	<p>376-0410-0131-203</p>

Part numbers shown in gray are normally
in inventory at your Dialight Distributor.

WITH SCREW-ON LENS CAPS



LH77/3 377-0410-11-203

377 SERIES

BASE PART NUMBERS

CAP PART NUMBERS

COMPLETE ASSEMBLY PART NUMBERS

	<p>LC19 169-1131-203 stovepipe, transparent</p>	<p>377-0410-1131-203</p>
	<p>LC20 169-1191-203 stovepipe internal fluting</p>	<p>377-0410-1191-203</p>

Part numbers listed in this catalog designate products with RED lens.
For ordering lens colors other than red, consult chart on page 2D.

Order complete with lamp to be assured of receiving the
indicator light and correct lamp together for immediate use.