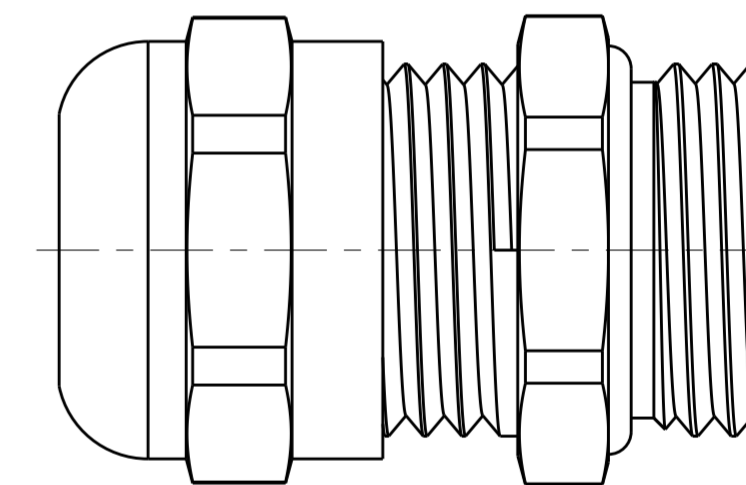
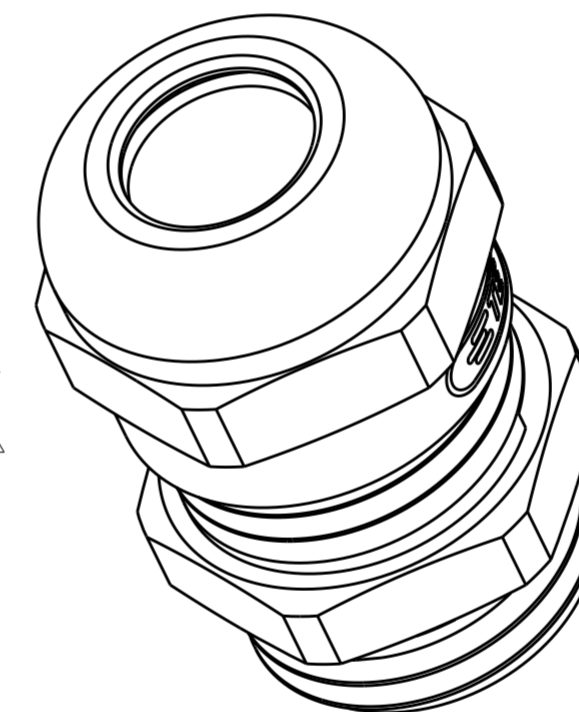
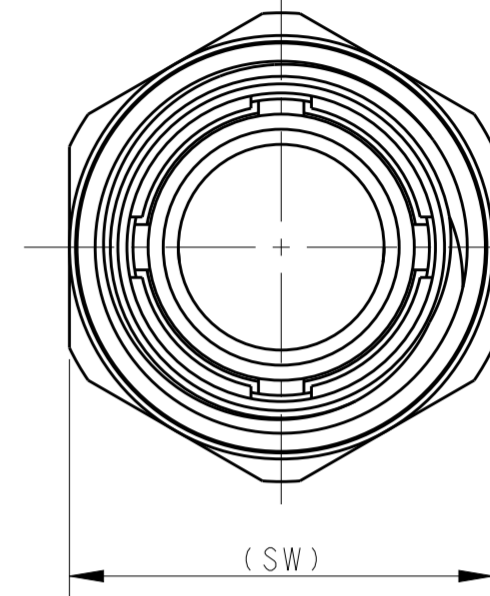
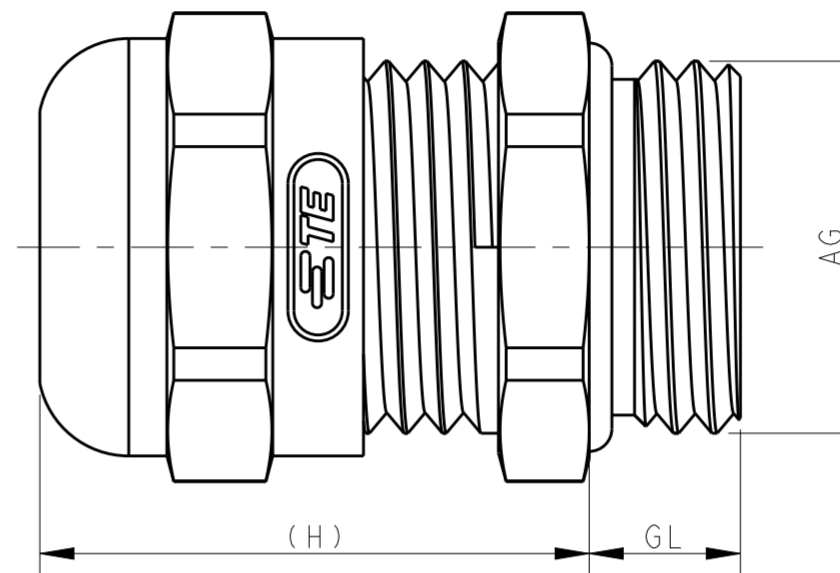


| THIS DRAWING IS UNPUBLISHED. |                           | RELEASED FOR PUBLICATION |      | 20                   |      |    |                     |  |  |                            |
|------------------------------|---------------------------|--------------------------|------|----------------------|------|----|---------------------|--|--|----------------------------|
| COPYRIGHT 20                 |                           | BY -                     |      | ALL RIGHTS RESERVED. |      |    |                     |  |  |                            |
| M32x1.5                      | 18-25                     | 25.4                     |      | 12                   | 31   | 40 | DLX-32-LM           | METAL CABLE GLAND M32 (18-25), THREAD LENGTHEN<br>金属加长螺纹接头 M32 (18-25) | T3609320202-000                                  |                            |
| M32x1.5                      | 13-20                     | 20.4                     |      | 12                   | 31   | 40 | DLX-32-LMT          | METAL CABLE GLAND M32 (13-20), THREAD LENGTHEN<br>金属加长螺纹接头 M32 (13-20) | T3609320212-000                                  |                            |
| M63x1.5                      | 37-44                     |                          | 10   |                      | 41   | 70 | DLX-63-M            | METAL CABLE GLAND M63(37-44)<br>金属接头 M63 (37-44)                       |  | T3609630102-000            |
| M63x1.5                      | 29-35                     | 36                       | 10.5 |                      | 40   | 67 | DLX-63-MT           | METAL CABLE GLAND M63(29-35)<br>金属接头 M63 (29-35)                       | T3609630112-000                                  |                            |
| M50x1.5                      | 32-38                     | 39                       | 9    |                      | 37   | 57 | DLX-50-M            | METAL CABLE GLAND M50(32-38)<br>金属接头 M50 (32-38)                       | T3609500102-000                                  | T3609500102-001            |
| M50x1.5                      | 29-36                     | 36.5                     | 9    |                      | 37   | 57 | DLX-50-M            | METAL CABLE GLAND M50(29-36)<br>金属接头 M50 (29-36)                       | T3609500122-000                                  |                            |
| M50x1.5                      | 22-32                     |                          | 9    |                      | 38.5 | 55 | DLX-50-MT           | METAL CABLE GLAND M50(22-32)<br>金属接头 M50 (22-32)                       |  | T3609500112-000            |
| M40x1.5                      | 22-32                     | 33                       | 8    |                      | 37   | 50 | DLX-40-M            | METAL CABLE GLAND M40(22-32)<br>金属接头 M40 (22-32)                       | T3609400102-000                                  | <del>T3609400102-001</del> |
| M40x1.5                      | 20-26                     | 26.5                     | 8    |                      | 37   | 50 | DLX-40-MT           | METAL CABLE GLAND M40(20-26)<br>金属接头 M40 (20-26)                       | T3609400112-000                                  |                            |
| M32x1.5                      | 18-25                     | 25.4                     |      |                      | 31   | 40 | DLX-32-M            | METAL CABLE GLAND M32(18-25)<br>金属接头 M32 (18-25)                       | T3609320102-000                                  |                            |
| M32x1.5                      | 13-20                     | 20.4                     |      |                      | 31   | 40 | DLX-32-MT           | METAL CABLE GLAND M32(13-20)<br>金属接头 M32 (13-20)                       | T3609320112-000                                  |                            |
| M25x1.5                      | 13-18                     | 18.4                     |      | 12                   | 26   | 30 | DLX-25-LM           | METAL CABLE GLAND M25 (13-18), THREAD LENGTHEN<br>金属加长螺纹接头 M25 (13-18) | T3609250202-000                                  |                            |
| M25x1.5                      | 13-18                     | 18.4                     | 7    |                      | 26   | 30 | DLX-25-M            | METAL CABLE GLAND M25(13-18)<br>金属接头 M25 (13-18)                       | T3609250102-000                                  |                            |
| M25x1.5                      | 9-16                      | 16.4                     |      | 12                   | 26   | 30 | DLX-25-LMT          | METAL CABLE GLAND M25 (9-16), THREAD LENGTHEN<br>金属加长螺纹接头 M25 (9-16)   | T3609250212-000                                  |                            |
| M25x1.5                      | 9-16                      | 16.4                     | 7    |                      | 26   | 30 | DLX-25-MT           | METAL CABLE GLAND M25(9-16)<br>金属接头 M25 (9-16)                         | T3609250112-000                                  |                            |
| M20x1.5                      | 10-14                     | 13.8                     | 6    |                      | 24   | 24 | DLX-20-MB           | METAL CABLE GLAND M20(10-14)<br>金属接头 M20 (10-14)                       | T3609200122-000                                  |                            |
| M20x1.5                      | 6-12                      | 12.2                     |      | 10                   | 23   | 22 | DLX-20-LM           | METAL CABLE GLAND M20 (6-12), THREAD LENGTHEN<br>金属加长螺纹接头 M20 (6-12)   | T3609200202-000                                  |                            |
| M20x1.5                      | 6-12                      | 12.2                     | 6    |                      | 23   | 22 | DLX-20-M            | METAL CABLE GLAND M20(6-12)<br>金属接头 M20 (6-12)                         | T3609200102-000                                  |                            |
| M20x1.5                      | 5-9                       | 9.2                      |      | 10                   | 23   | 22 | DLX-20-LMT          | METAL CABLE GLAND M20 (5-9), THREAD LENGTHEN<br>金属加长螺纹接头 M20 (5-9)     | T3609200222-000                                  |                            |
| M20x1.5                      | 5-9                       | 9.2                      | 6    |                      | 23   | 22 | DLX-20-MT           | METAL CABLE GLAND M20(5-9)<br>金属接头 M20 (5-9)                           | T3609200112-000                                  |                            |
| M16x1.5                      | 5-10                      | 10.2                     |      | 10                   | 22   | 20 | DLX-16-LMB          | METAL CABLE GLAND M16 (5-10), THREAD LENGTHEN<br>金属加长螺纹接头 M16 (5-10)   | T3609160222-000                                  |                            |
| M16x1.5                      | 5-10                      | 10.2                     | 6    |                      | 22   | 20 | DLX-16-MB           | METAL CABLE GLAND M16(5-10)<br>金属接头 M16 (5-10)                         | T3609160122-000                                  |                            |
| M16x1.5                      | 4-8                       | 8.5                      |      | 10                   | 21   | 19 | DLX-16-LM           | METAL CABLE GLAND M16 (4-8), THREAD LENGTHEN<br>金属加长螺纹接头 M16 (4-8)     | T3609160202-000                                  |                            |
| M16x1.5                      | 4-8                       | 8.5                      | 6    |                      | 21   | 19 | DLX-16-M            | METAL CABLE GLAND M16(4-8)<br>金属接头 M16 (4-8)                           | T3609160102-000                                  |                            |
| M16x1.5                      | 2-6                       | 6.5                      |      | 21                   | 19   | 19 | DLX-16-MT           | METAL CABLE GLAND M16(2-6)<br>金属接头 M16 (2-6)                           | T3609160112-000                                  |                            |
| M12x1.5                      | 3-6.5                     | 6.8                      |      | 8                    | 25   | 14 | DLX-12-LM           | METAL CABLE GLAND M12 (3-6.5), LENGTHEN<br>金属加长接头 M12 (3-6.5)          | T3609120202-000                                  |                            |
| M12x1.5                      | 3-6.5                     | 6.8                      | 5    |                      | 25   | 14 | DLX-12-M            | METAL CABLE GLAND M12(3-6.5)<br>金属接头 M12 (3-6.5)                       | T3609120102-000                                  |                            |
| M12x1.5                      | 2-5                       | 5.3                      | 5    |                      | 25   | 14 | DLX-12-MT           | METAL CABLE GLAND M12(2-5)<br>金属接头 M12 (2-5)                           | T3609120112-000                                  |                            |
| PG48                         | 37-44                     | 44.5                     | 10   |                      | 41   | 65 | DLX-48-MS           | METAL CABLE GLAND PG48(37-44)<br>金属接头 PG48 (37-44)                     | T3609480101-000                                  |                            |
| PG48                         | 29-35                     | 36                       | 10   |                      | 30   | 64 | DLX-48-MTS          | METAL CABLE GLAND PG48(29-35)<br>金属接头 PG48 (29-35)                     | T3609480111-000                                  |                            |
| PG42                         | 30-38                     |                          | 9    |                      | 40   | 58 | DLX-42-MS           | METAL CABLE GLAND PG42(30-38)<br>金属接头 PG42 (30-38)                     |  | T3609420101-000            |
| PG42                         | 25-31                     | 31.5                     | 9    |                      | 37   | 57 | DLX-42-MTS          | METAL CABLE GLAND PG42(25-31)<br>金属接头 PG42 (25-31)                     | T3609420111-000                                  |                            |
| PG36                         | 22-32                     | 33                       |      | 15                   | 39   | 50 | DLX-36-LMS          | METAL CABLE GLAND PG36 (22-32), LENGTHEN<br>金属加长接头 PG36 (22-32)        | T3609360201-000                                  |                            |
| PG36                         | 22-32                     | 33                       | 8    |                      | 38   | 50 | DLX-36-MS           | METAL CABLE GLAND PG36(22-32)<br>金属接头 PG36 (22-32)                     | T3609360101-000                                  |                            |
| PG36                         | 20-26                     | 26.5                     | 8    |                      | 38   | 50 | DLX-36-MTS          | METAL CABLE GLAND PG36(20-26)<br>金属接头 PG36 (20-26)                     | T3609360111-000                                  |                            |
| PG29                         | 18-25                     | 25.4                     |      | 15                   | 33   | 40 | DLX-29-LMS          | METAL CABLE GLAND PG29 (18-25), LENGTHEN<br>金属加长接头 PG29 (18-25)        | T3609290201-000                                  |                            |
| PG29                         | 18-25                     | 25.4                     | 8    |                      | 30   | 40 | DLX-29-MS           | METAL CABLE GLAND PG29(18-25)<br>金属接头 PG29 (18-25)                     | T3609290101-000                                  | <del>T3609290101-001</del> |
| PG29                         | 13-20                     | 20.4                     | 8    |                      | 30   | 40 | DLX-29-MTS          | METAL CABLE GLAND PG29(13-20)<br>金属接头 PG29 (13-20)                     | T3609290111-000                                  |                            |
| PG21                         | 13-18                     | 18.4                     |      | 12                   | 25   | 30 | DLX-21-LMS          | METAL CABLE GLAND PG21 (13-18), LENGTHEN<br>金属加长接头 PG21 (13-18)        | T3609210201-000                                  |                            |
| PG21                         | 13-18                     | 18.4                     | 7    |                      | 25   | 30 | DLX-21-MS           | METAL CABLE GLAND PG21(13-18)<br>金属接头 PG21 (13-18)                     | T3609210101-000                                  |                            |
| PG21                         | 9-16                      | 16.4                     | 7    |                      | 25   | 30 | DLX-21-MTS          | METAL CABLE GLAND PG21(9-16)<br>金属接头 PG21 (9-16)                       | T3609210111-000                                  |                            |
| PG16                         | 10-14                     | 13.8                     | 6.5  |                      | 23.5 | 24 | DLX-16-MS           | METAL CABLE GLAND PG16(10-14)<br>金属接头 PG16 (10-14)                     | T3609160101-000                                  |                            |
| PG16                         | 7-12                      | 12.2                     | 6.5  |                      | 23.5 | 24 | DLX-16-MTS          | METAL CABLE GLAND PG16(7-12)<br>金属接头 PG16 (7-12)                       | T3609160111-000                                  |                            |
| PG13.5                       | 6-12                      | 12.2                     | 6.5  |                      | 23.5 | 22 | DLX-13.5-MS         | METAL CABLE GLAND PG13.5(6-12)<br>金属接头 PG13.5 (6-12)                   | T3609130101-000                                  |                            |
| PG13.5                       | 5-9                       | 9.2                      | 6.5  |                      | 23.5 | 22 | DLX-13.5-MTS        | METAL CABLE GLAND PG13.5(5-9)<br>金属接头 PG13.5 (5-9)                     | T3609130111-000                                  |                            |
| PG11                         | 5-10                      | 10.2                     | 6    |                      | 24   | 21 | DLX-11-MS           | METAL CABLE GLAND PG11(5-10)<br>金属接头 PG11 (5-10)                       | T3609110101-000                                  |                            |
| PG11                         | 3-7                       | 7.2                      | 6    |                      | 24   | 21 | DLX-11-MTS          | METAL CABLE GLAND PG11(3-7)<br>金属接头 PG11 (3-7)                         | T3609110111-000                                  |                            |
| PG11                         |                           |                          | 6    |                      | 24   | 21 | DLX-11-MSN          | METAL CABLE GLAND, WITHOUT INNER SEALING<br>金属接头 PG11, 无内衬圈            | T3609110121-000                                  |                            |
| PG9                          | 4-8                       | 8.5                      | 6    |                      | 24   | 17 | DLX-9-MS            | METAL CABLE GLAND PG9(4-8)<br>金属接头 PG9 (4-8)                           | T3609090101-000                                  |                            |
| PG9                          | 2-6                       | 6.5                      | 6    |                      | 24   | 17 | DLX-9-MTS           | METAL CABLE GLAND PG9(2-6)<br>金属接头 PG9 (2-6)                           | T3609090111-000                                  |                            |
| PG7                          | 3-6.5                     | 8.5                      |      | 6                    | 25   | 17 | DLX-7-MES           | METAL CABLE GLAND PG7 (3-6.5), LARGE<br>金属接头 PG7 (3-6.5), 加大型          | T3609070121-000                                  |                            |
| PG7                          | 3-6.5                     | 6.8                      | 5    |                      | 25   | 14 | DLX-7-MS            | METAL CABLE GLAND PG7(3-6.5)<br>金属接头 PG7 (3-6.5)                       | T3609070101-000                                  |                            |
| PG7                          | 2-5                       | 5.3                      | 5    |                      | 25   | 14 | DLX-7-MTS           | METAL CABLE GLAND PG7(2-5)<br>金属接头 PG7 (2-5)                           | T3609070111-000                                  |                            |
| AG                           | WIRE RANGE<br>夹线范围<br>(∅) | ∅                        | GL   | GL<br>(Lengthen加长)   | H    | SW | DESCRIPTION<br>产品描述 | PART NUMBER<br>WITH TE LOGO<br>成品料号 (带 TE Logo)                        | PART NUMBER<br>WITHOUT LOGO<br>成品料号 (不带 TE Logo) |                            |

| REVISIONS |     |               |           |     |      |
|-----------|-----|---------------|-----------|-----|------|
| P         | LTR | DESCRIPTION   | DATE      | DWN | APVD |
| B2        |     | ECR-18-010224 | 30JUN2018 | CH  | CW   |
| B3        |     | ECR-18-020020 | 26DEC2018 | YC  | CW   |
| B4        |     | ECR-19-002559 | 16FEB2019 | WOR | CW   |
| B5        |     | ECR-19-004297 | 21MAR2019 | SR  | CW   |



PART NUMBER SHOWN WITH TE LOGO  
成品料号 (带 TE LOGO)

PART NUMBER SHOWN WITHOUT LOGO  
成品料号 (不带 TE LOGO)  
EXCEPT THE TE LOGO, ALL DIMENSIONS ARE SAME AS CORRESPONDING PART NUMBER WITH TE LOGO  
除 TE LOGO 差异外, 不带 TE LOGO 与带 TE LOGO 对应型号之间, 所有尺寸均相同。

NOTES/技术指标:

- 1. TECHNICAL CHARACTERISTICS/技术参数:
  - SHELL MATERIAL/主体材料: NICKEL PLATED BRASS/铜镀镍
  - SEAL MATERIAL/密封材料: ELASTIC RUBBER/弹性橡胶
  - PINCH RING MATERIAL/夹零件材料: PA
  - OPERATION TEMPERATURE/工作温度: -40°C~+100°C
  - PROTECTION DEGREE/防护等级: IP68 (EXCEPT T3609110121-000) (料号 T3609110121-000 除外)

WIRE RANGE/夹线范围: SEE TABLE/见表格

2. OBSOLETE / 料号已停用

|  |           |   |                           |                  |
|--|-----------|---|---------------------------|------------------|
| THIS DRAWING IS A CONTROLLED DOCUMENT. |           | DWN<br>G.LINO.YAO<br>05JUN2015                                  | TE Connectivity           |                  |
|  |           | CHK<br>CHRIS.WANG<br>05JUN2015                                  |                           |                  |
|  |           | APVD<br>XIANG.XU<br>05JUN2015                                   | NAME<br>METAL CABLE GLAND |                  |
| DIMENSIONS:<br>mm                      |           | TOLERANCES UNLESS OTHERWISE SPECIFIED:                          |                           | PRODUCT SPEC     |
|  |           | 0 PLC ±<br>1 PLC ±<br>2 PLC ±<br>3 PLC ±<br>4 PLC ±<br>ANGLES ± |                           | APPLICATION SPEC |
| MATERIAL                               |           | FINISH  |                           | WEIGHT           |
|  |           |   |                           | Customer Drawing |
| SIZE<br>A2                             | CAGE CODE | DRAWING NO<br>G-T360XXXXXXX000                                  | RESTRICTED TO             |                  |
| SCALE 5:1                              |           | SHEET 1 OF 1  | REV B5                    |                  |