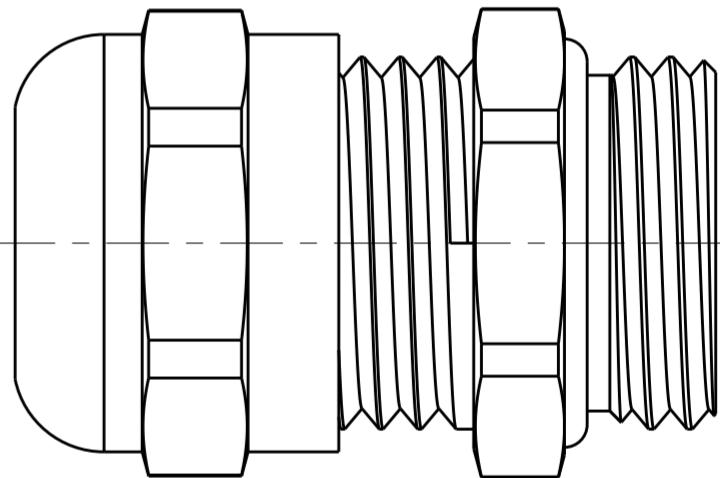
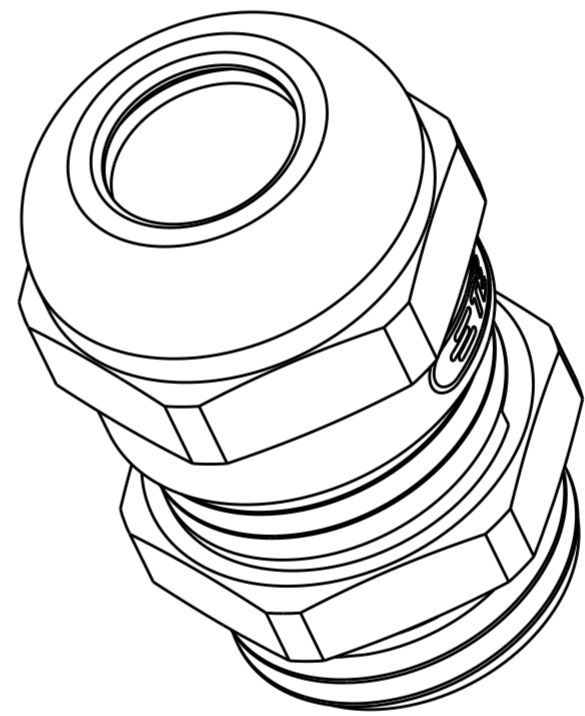
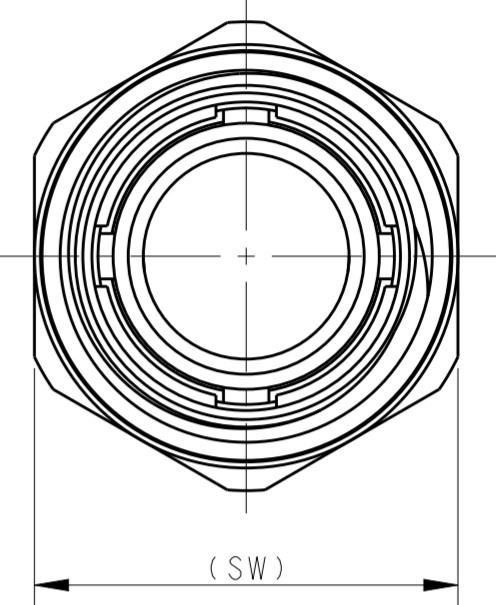
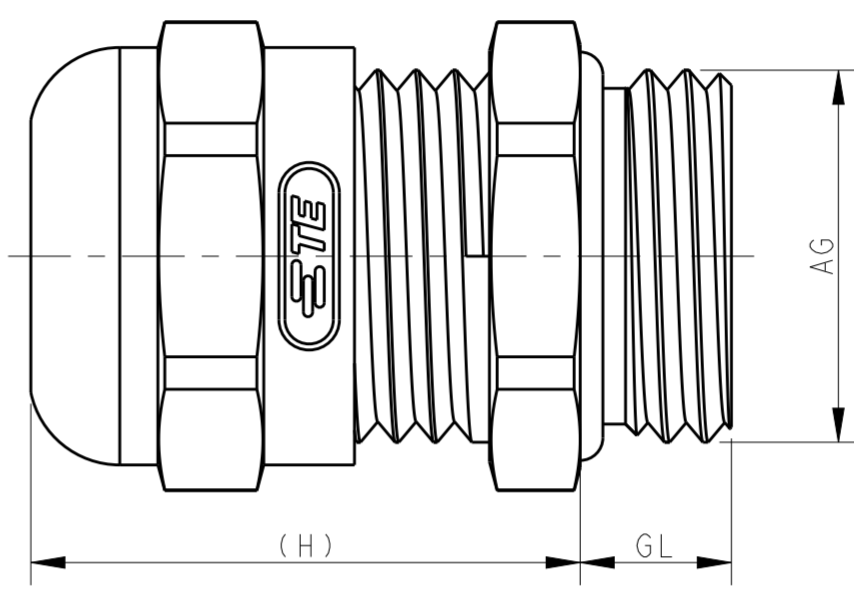


AG	WIRE RANGE 夹线范围 (Ø)	Ø	GL (Lengthen+长)	H	SW	DESCRIPTION 产品描述	PART NUMBER WITH TE LOGO 成品料号 (带TE Logo)	PART NUMBER WITHOUT LOGO 成品料号 (不带TE Logo)
M32x1.5	18-25	25.4		12	31	40 DLX-32-LM 金属加长螺纹接头 M32 (18-25)	T3609320202-000	
M32x1.5	13-20	20.4		12	31	40 DLX-32-LMT 金属加长螺纹接头 M32 (13-20)	T3609320212-000	
M63x1.5	37-44		10		41	70 DLX-63-M 金属接头 M63 (37-44)		T3609630102-000
M63x1.5	29-35	36	10.5		40	67 DLX-63-MT 金属接头 M63 (29-35)	T3609630112-000	
M50x1.5	32-38	39			37	57 DLX-50-M 金属接头 M50 (32-38)	T3609500102-000	T3609500102-001
M50x1.5	29-36	36.5			37	57 DLX-50-M 金属接头 M50 (29-36)	T3609500122-000	
M50x1.5	22-32				38.5	55 DLX-50-MT 金属接头 M50 (22-32)		T3609500112-000
M40x1.5	22-32	33			37	50 DLX-40-M 金属接头 M40 (22-32)	T3609400102-000	T3609400102-001
M40x1.5	20-26	26.5			37	50 DLX-40-MT 金属接头 M40 (20-26)	T3609400112-000	
M32x1.5	18-25	25.4			31	40 DLX-32-M 金属接头 M32 (18-25)	T3609320102-000	
M32x1.5	13-20	20.4			31	40 DLX-32-MT 金属接头 M32 (13-20)	T3609320112-000	
M25x1.5	13-18	18.4			12	26 30 DLX-25-LM 金属加长螺纹接头 M25 (13-18)	T3609250202-000	
M25x1.5	13-18	18.4			26	30 DLX-25-M 金属接头 M25 (13-18)	T3609250102-000	
M25x1.5	9-16	16.4			12	26 30 DLX-25-LMT 金属加长螺纹接头 M25 (9-16)	T3609250212-000	
M25x1.5	9-16	16.4			26	30 DLX-25-MT 金属接头 M25 (9-16)	T3609250112-000	
M20x1.5	10-14	13.8			24	24 DLX-20-MB 金属接头 M20 (10-14)	T3609200122-000	
M20x1.5	6-12	12.2			10	23 22 DLX-20-LM 金属加长螺纹接头 M20 (6-12)	T3609200202-000	
M20x1.5	6-12	12.2			23	22 DLX-20-M 金属接头 M20 (6-12)	T3609200102-000	
M20x1.5	5-9	9.2			10	23 22 DLX-20-LMT 金属加长螺纹接头 M20 (5-9)	T3609200222-000	
M20x1.5	5-9	9.2			23	22 DLX-20-MT 金属接头 M20 (5-9)	T3609200112-000	
M16x1.5	5-10	10.2			10	22 20 DLX-16-LMB 金属加长螺纹接头 M16 (5-10)	T3609160222-000	
M16x1.5	5-10	10.2			22	20 DLX-16-MB 金属接头 M16 (5-10)	T3609160122-000	
M16x1.5	4-8	8.5			10	21 19 DLX-16-LM 金属加长螺纹接头 M16 (4-8)	T3609160202-000	
M16x1.5	4-8	8.5			21	19 DLX-16-M 金属接头 M16 (4-8)	T3609160102-000	
M16x1.5	2-6	6.5			21	19 DLX-16-MT 金属接头 M16 (2-6)	T3609160112-000	
M12x1.5	3-6.5	6.8			8	25 14 DLX-12-LM 金属加长接头 M12 (3-6.5)	T3609120202-000	
M12x1.5	3-6.5	6.8			25	14 DLX-12-M 金属接头 M12 (3-6.5)	T3609120102-000	
M12x1.5	2-5	5.3			25	14 DLX-12-MT 金属接头 M12 (2-5)	T3609120112-000	
PG48	37-44	44.5	10		41	65 DLX-48-MS 金属接头 PG48 (37-44)	T3609480101-000	
PG48	29-35	36	10		30	64 DLX-40-MS 金属接头 PG48 (29-35)	T3609480111-000	
PG42	30-38				9	40 58 DLX-42-MS 金属接头 PG42 (30-38)		T3609420101-000
PG42	25-31	31.5			9	37 57 DLX-42-MS 金属接头 PG42 (25-31)	T3609420111-000	
PG36	22-32	33			15	39 50 DLX-36-LMS 金属加长接头 PG36 (22-32)	T3609360201-000	
PG36	22-32	33			38	50 DLX-36-MS 金属接头 PG36 (22-32)	T3609360101-000	
PG36	20-26	26.5			38	50 DLX-36-MS 金属接头 PG36 (20-26)	T3609360111-000	
PG29	18-25	25.4	8		30	40 DLX-29-LMS 金属加长接头 PG29 (18-25)	T3609290201-000	
PG29	18-25	25.4			8	30 40 DLX-29-MS 金属接头 PG29 (18-25)	T3609290101-000	T3609290101-001
PG29	13-20	20.4			8	30 40 DLX-29-MS 金属接头 PG29 (13-20)	T3609290111-000	
PG21	13-18	18.4			12	25 30 DLX-21-LMS 金属加长接头 PG21 (13-18)	T3609210201-000	
PG21	13-18	18.4			25	30 DLX-21-MS 金属接头 PG21 (13-18)	T3609210101-000	
PG21	9-16	16.4			25	30 DLX-21-MS 金属接头 PG21 (9-16)	T3609210111-000	
PG16	10-14	13.8			6.5	23.5 24 DLX-16-MS 金属接头 PG16 (10-14)	T3609160101-000	
PG16	7-12	12.2			6.5	23.5 24 DLX-16-MS 金属接头 PG16 (7-12)	T3609160111-000	
PG13.5	6-12	12.2			6.5	23.5 22 DLX-13.5-MS 金属接头 PG13.5 (6-12)	T3609130101-000	
PG13.5	5-9	9.2			6.5	23.5 22 DLX-13.5-MS 金属接头 PG13.5 (5-9)	T3609130111-000	
PG11	5-10	10.2			6	24 21 DLX-11-MS 金属接头 PG11 (5-10)	T3609110101-000	
PG11	3-7	7.2			6	24 21 DLX-11-MS 金属接头 PG11 (3-7)	T3609110111-000	
PG11					6	24 21 DLX-11-MSN 金属接头 PG11, 无内衬	T3609110121-000	
PG9	4-8	8.5			6	24 17 DLX-9-MS 金属接头 PG9 (4-8)	T3609090101-000	
PG9	2-6	6.5			6	24 17 DLX-9-MS 金属接头 PG9 (2-6)	T3609090111-000	
PG7	3-6.5	8.5			6	25 17 DLX-7-MES 金属接头 PG7 (3-6.5), 加大型	T3609070121-000	
PG7	3-6.5	6.8			5	25 14 DLX-7-MS 金属接头 PG7 (3-6.5)	T3609070101-000	
PG7	2-5	5.3			5	25 14 DLX-7-MS 金属接头 PG7 (2-5)	T3609070111-000	

P	LTR	DESCRIPTION	DATE	DWN	APVD
B2		ECR-18-010224	30JUN2018	CH	CW
B3		ECR-18-020020	26DEC2018	YC	CW
B4		ECR-19-002559	16FEB2019	WOR	CW
B5		ECR-19-004297	21MAR2019	SR	CW



△ 2
△ 2
△ 2
△ 2

PART NUMBER SHOWN
WITHOUT LOGO
成品料号 (不带 TE LOGO)

PART NUMBER SHOWN
WITH TE LOGO
成品料号 (带 TE LOGO)
EXCEPT THE TE LOGO, ALL DIMENSIONS ARE SAME AS
CORRESPONDING PART NUMBER WITH TE LOGO
除 TE LOGO 差异外, 不带 TE LOGO 与带 TE LOGO 对应型号之间, 所有尺寸均相同。

NOTES/技术指标:

- 1. TECHNICAL CHARACTERISTICS/技术参数:
 - SHELL MATERIAL/主体材料: NICKEL PLATED BRASS/铜镀镍
 - SEAL MATERIAL/密封材料: ELASTIC RUBBER/弹性橡胶
 - PINCH RING MATERIAL/夹零件材料: PA
 - OPERATION TEMPERATURE/工作温度: -40°C~+100°C
 - PROTECTION DEGREE/防护等级: IP68
 - (EXCEPT T3609110121-000)
 - (料号T3609110121-000除外)

WIRE RANGE/夹线范围: SEE TABLE/见表格

△ 2 OBSOLETE /料号已停用

THIS DRAWING IS A CONTROLLED DOCUMENT.		DWN G.LNO.YAO 05JUN2015		 TE Connectivity					
DIMENSIONS: mm		CHK CHRIS.WANG 05JUN2015					NAME METAL CABLE GLAND		
TOLERANCES UNLESS OTHERWISE SPECIFIED: 0 PLC ± 1 PLC ± 2 PLC ± 3 PLC ± 4 PLC ± ANGLES ±		APVD XIANG.XU 05JUN2015					PRODUCT SPEC		
MATERIAL	-	FINISH		-		APPLICATION SPEC			
		WEIGHT		-		SIZE A2			
		Customer Drawing		SCALE 5:1		RESTRICTED TO -			
				DRAWING NO C-T360XXXXXXXXX000		REV B5			
				SHEET 1 OF 1					