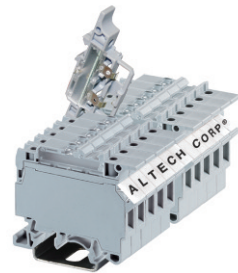


Fuse Blocks, 5 x 20 and 5 x 25 mm

Altech fuse terminals are also available with light indication - CF4U(L). A specially designed built-in circuit gives light indication in the event of fuse blow out. Thus, fault in a circuit can be easily located. No polarity is required.



Important:

The disconnecting device is not suitable for interrupting load. The supply must be switched off before operating the slide link/lever.

† Fuses are sold separately see pages 100-101.

* Add required voltage to part number as a suffix. i.e. CF4U(L)/6-60 for 6-60 V AC/DC.

Terminal Width	8 mm															
Height x Length	57.6 x 57 mm															
Stripping Length	9.5 mm															
Insulation Material	Polyamide 6.6															
Type of Connection	2 screw clamps															
LED Voltage	6-60 V AC/DC 90-240 V AC/DC															
Size of Fuse Used	Ø5x20, Ø5x25 mm															
Type of Fuse Used	Glass															
Approvals	<table border="1"> <tr><td>SA C US</td><td>IEC 60947-7-3</td><td>FU C US E220514</td></tr> <tr><td>22-10 AWG</td><td>0.2-4 mm²</td><td>22-10 AWG</td></tr> <tr><td>600 V</td><td>1000 V</td><td>600 V</td></tr> <tr><td>10 A</td><td>6.3 A</td><td>10 A</td></tr> <tr><td>7 lb-in</td><td>0.5 Nm</td><td>7 lb-in</td></tr> </table>	SA C US	IEC 60947-7-3	FU C US E220514	22-10 AWG	0.2-4 mm ²	22-10 AWG	600 V	1000 V	600 V	10 A	6.3 A	10 A	7 lb-in	0.5 Nm	7 lb-in
SA C US	IEC 60947-7-3	FU C US E220514														
22-10 AWG	0.2-4 mm ²	22-10 AWG														
600 V	1000 V	600 V														
10 A	6.3 A	10 A														
7 lb-in	0.5 Nm	7 lb-in														
Wire Range	22-10 AWG															
Voltage Rating	600 V															
Current Rating	10 A															
Torque	7 lb-in															
Other Approvals	<table border="1"> <tr><td>SA C US</td><td>IEC 60947-7-3</td><td>FU C US E220514</td></tr> <tr><td>22-10 AWG</td><td>0.2-4 mm²</td><td>22-10 AWG</td></tr> <tr><td>600 V</td><td>600 V</td><td>600 V</td></tr> <tr><td>10 A</td><td>6.3 A</td><td>10 A</td></tr> <tr><td>7 lb-in</td><td>0.5 Nm</td><td>7 lb-in</td></tr> </table>	SA C US	IEC 60947-7-3	FU C US E220514	22-10 AWG	0.2-4 mm ²	22-10 AWG	600 V	600 V	600 V	10 A	6.3 A	10 A	7 lb-in	0.5 Nm	7 lb-in
SA C US	IEC 60947-7-3	FU C US E220514														
22-10 AWG	0.2-4 mm ²	22-10 AWG														
600 V	600 V	600 V														
10 A	6.3 A	10 A														
7 lb-in	0.5 Nm	7 lb-in														

Terminal Block

DIN Rail for ordering information refer to pages 90-91

End Stop for ordering information refer to page 92

Internal Jumper	2 pole	
	3 pole	
	4 pole	
	10 pole	

Insulated Internal Jumper	2 pole	
	3 pole	
	4 pole	
	10 pole	

Current Bar	2 pole	
	3 pole	
	4 pole	
	10 pole	

Shorting Sleeve & Screw

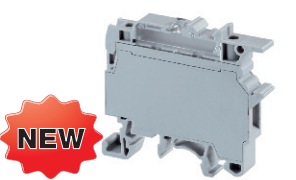
External Jumper	2 pole	
	3 pole	
	4 pole	
	10 pole	

Marking Tags (on terminal)

(on Lever)

COLOR BLOCKS		
(other than standard grey)		
When ordering please add color suffix to Cat. No.		
Example for color Red: Cat.No./R		
Color	Ordering Suffix	
Red	R	
Yellow	Y	
Blue	BU	
Green	G	
Consult Altech for availability:		
Orange	O	
Beige	BG	
Dark Brown	DB	
Black	BL	
White	W	

CF4U†



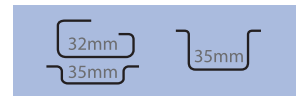
No End Plate Required.

Terminal Width	8 mm															
Height x Length	57.6 x 57 mm															
Stripping Length	9.5 mm															
Insulation Material	Polyamide 6.6															
Type of Connection	2 screw clamps															
LED Voltage	6-60 V AC/DC 90-240 V AC/DC															
Size of Fuse Used	Ø5x20, Ø5x25 mm															
Type of Fuse Used	Glass															
Approvals	<table border="1"> <tr><td>SA C US</td><td>IEC 60947-7-3</td><td>FU C US E220514</td></tr> <tr><td>22-10 AWG</td><td>0.2-4 mm²</td><td>22-10 AWG</td></tr> <tr><td>600 V</td><td>1000 V</td><td>600 V</td></tr> <tr><td>10 A</td><td>6.3 A</td><td>10 A</td></tr> <tr><td>7 lb-in</td><td>0.5 Nm</td><td>7 lb-in</td></tr> </table>	SA C US	IEC 60947-7-3	FU C US E220514	22-10 AWG	0.2-4 mm ²	22-10 AWG	600 V	1000 V	600 V	10 A	6.3 A	10 A	7 lb-in	0.5 Nm	7 lb-in
SA C US	IEC 60947-7-3	FU C US E220514														
22-10 AWG	0.2-4 mm ²	22-10 AWG														
600 V	1000 V	600 V														
10 A	6.3 A	10 A														
7 lb-in	0.5 Nm	7 lb-in														
Wire Range	22-10 AWG															
Voltage Rating	600 V															
Current Rating	10 A															
Torque	7 lb-in															
Other Approvals	<table border="1"> <tr><td>SA C US</td><td>IEC 60947-7-3</td><td>FU C US E220514</td></tr> <tr><td>22-10 AWG</td><td>0.2-4 mm²</td><td>22-10 AWG</td></tr> <tr><td>600 V</td><td>600 V</td><td>600 V</td></tr> <tr><td>10 A</td><td>6.3 A</td><td>10 A</td></tr> <tr><td>7 lb-in</td><td>0.5 Nm</td><td>7 lb-in</td></tr> </table>	SA C US	IEC 60947-7-3	FU C US E220514	22-10 AWG	0.2-4 mm ²	22-10 AWG	600 V	600 V	600 V	10 A	6.3 A	10 A	7 lb-in	0.5 Nm	7 lb-in
SA C US	IEC 60947-7-3	FU C US E220514														
22-10 AWG	0.2-4 mm ²	22-10 AWG														
600 V	600 V	600 V														
10 A	6.3 A	10 A														
7 lb-in	0.5 Nm	7 lb-in														



Cat. No.	Std. Pk.
----------	----------

CF4U 100

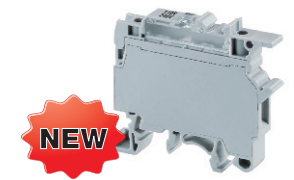


CA702	50
CA802	50

CA711/2	100
CA711/3	50
CA711/4	50
CA711/10	20

MT8	100
MT8	100

CF4U(L)†*



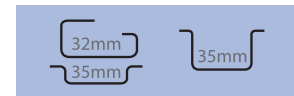
No Polarity Required.

Terminal Width	8 mm															
Height x Length	57.6 x 57 mm															
Stripping Length	9.5 mm															
Insulation Material	Polyamide 6.6															
Type of Connection	2 screw clamps															
LED Voltage	6-60 V AC/DC 90-240 V AC/DC															
Size of Fuse Used	Ø5x20, Ø5x25 mm															
Type of Fuse Used	Glass															
Approvals	<table border="1"> <tr><td>SA C US</td><td>IEC 60947-7-3</td><td>FU C US E220514</td></tr> <tr><td>22-10 AWG</td><td>0.2-4 mm²</td><td>22-10 AWG</td></tr> <tr><td>600 V</td><td>600 V</td><td>600 V</td></tr> <tr><td>10 A</td><td>6.3 A</td><td>10 A</td></tr> <tr><td>7 lb-in</td><td>0.5 Nm</td><td>7 lb-in</td></tr> </table>	SA C US	IEC 60947-7-3	FU C US E220514	22-10 AWG	0.2-4 mm ²	22-10 AWG	600 V	600 V	600 V	10 A	6.3 A	10 A	7 lb-in	0.5 Nm	7 lb-in
SA C US	IEC 60947-7-3	FU C US E220514														
22-10 AWG	0.2-4 mm ²	22-10 AWG														
600 V	600 V	600 V														
10 A	6.3 A	10 A														
7 lb-in	0.5 Nm	7 lb-in														
Wire Range	22-10 AWG															
Voltage Rating	600 V															
Current Rating	10 A															
Torque	7 lb-in															
Other Approvals	<table border="1"> <tr><td>SA C US</td><td>IEC 60947-7-3</td><td>FU C US E220514</td></tr> <tr><td>22-10 AWG</td><td>0.2-4 mm²</td><td>22-10 AWG</td></tr> <tr><td>600 V</td><td>600 V</td><td>600 V</td></tr> <tr><td>10 A</td><td>6.3 A</td><td>10 A</td></tr> <tr><td>7 lb-in</td><td>0.5 Nm</td><td>7 lb-in</td></tr> </table>	SA C US	IEC 60947-7-3	FU C US E220514	22-10 AWG	0.2-4 mm ²	22-10 AWG	600 V	600 V	600 V	10 A	6.3 A	10 A	7 lb-in	0.5 Nm	7 lb-in
SA C US	IEC 60947-7-3	FU C US E220514														
22-10 AWG	0.2-4 mm ²	22-10 AWG														
600 V	600 V	600 V														
10 A	6.3 A	10 A														
7 lb-in	0.5 Nm	7 lb-in														



Cat. No.	Std. Pk.
----------	----------

CF4U(L)* 50



CA702	50
CA802	50

CA711/2	100
CA711/3	50
CA711/4	50
CA711/10	25

MT8	100
MT8	100

