

WINNIE-M-C

~35° spot beam with holder C compatible with
LEDiL HEKLA

TECHNICAL SPECIFICATIONS:

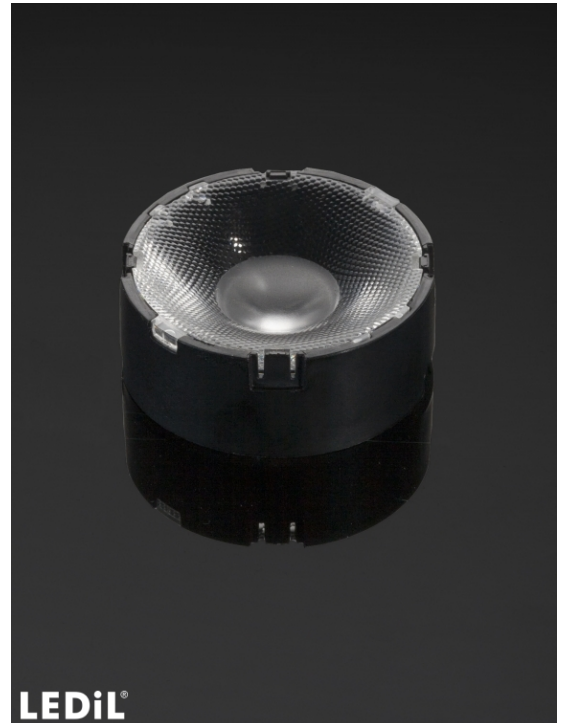
Dimensions	Ø 50.0 mm
Height	19.5 mm
Fastening	tape
ROHS compliant	yes ⓘ

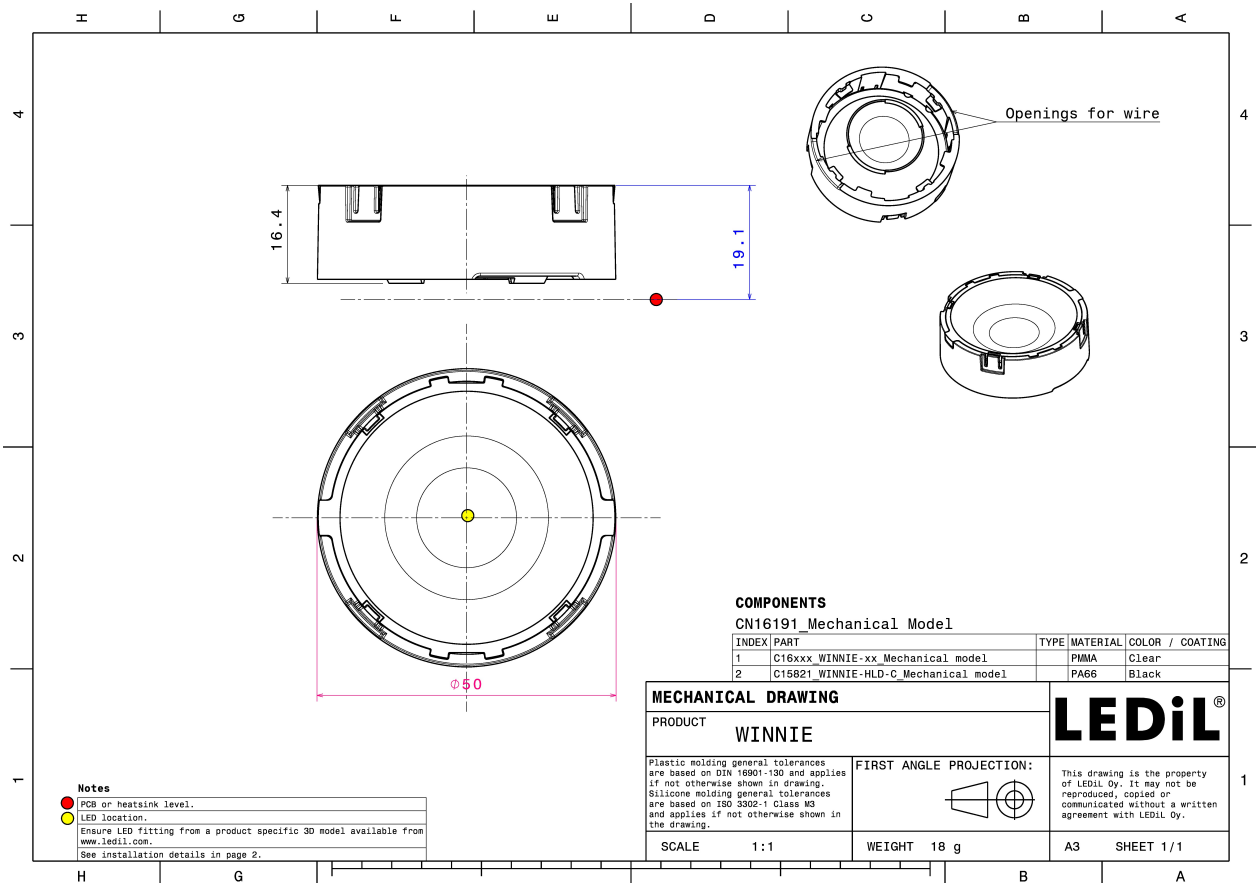
MATERIAL SPECIFICATIONS:

Component	Type	Material	Colour	Finish
WINNIE-M	Single lens	PMMA	clear	
WINNIE-HLD-C	Holder	PC	black	

ORDERING INFORMATION:

Component		Qty in box	MOQ	MPQ	Box weight (kg)
CN15824_WINNIE-M-C	Single lens	364	84	28	0.0
» Box size:					

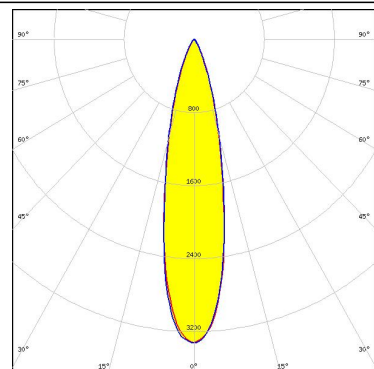
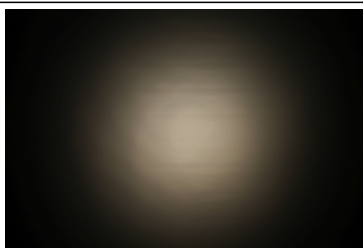




PHOTOMETRIC DATA (MEASURED):

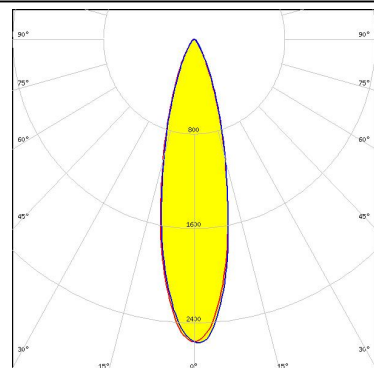
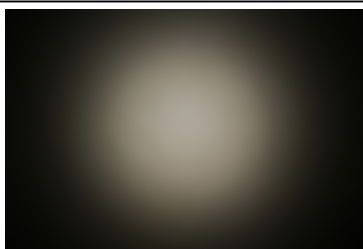
bridgelux.

LED V4 HD
FWHM 23.0°
Efficiency 83 %
Peak intensity 3.3 cd/lm
LEDs/each optic 1
Light colour White
Required components:
F15253_HEKLA-SOCKET-A



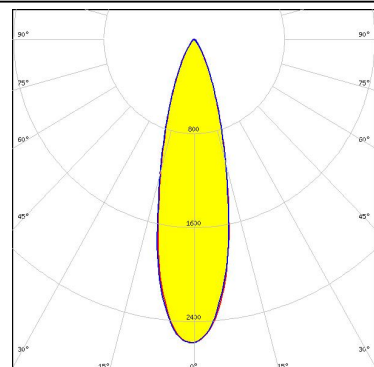
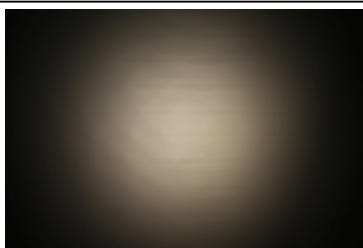
bridgelux.

LED V6 Gen6
FWHM 26.0°
Efficiency 80 %
Peak intensity 2.6 cd/lm
LEDs/each optic 1
Light colour White
Required components:
F15253_HEKLA-SOCKET-A



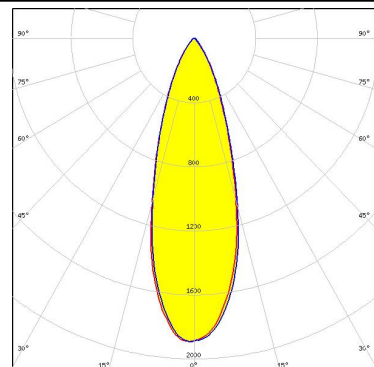
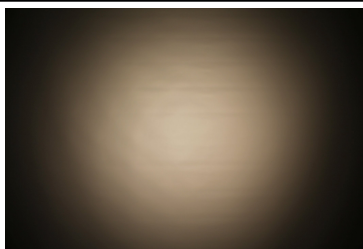
bridgelux.

LED V6 HD
FWHM 27.0°
Efficiency 83 %
Peak intensity 2.6 cd/lm
LEDs/each optic 1
Light colour White
Required components:
F15255_HEKLA-SOCKET-C



bridgelux.

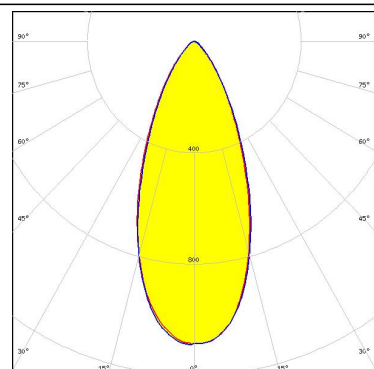
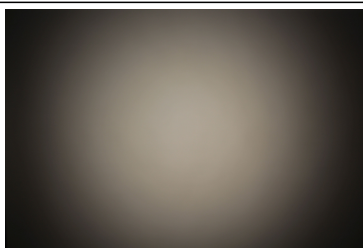
LED V9 HD
FWHM 33.0°
Efficiency 82 %
Peak intensity 1.9 cd/lm
LEDs/each optic 1
Light colour White
Required components:
F15859_HEKLA-SOCKET-I



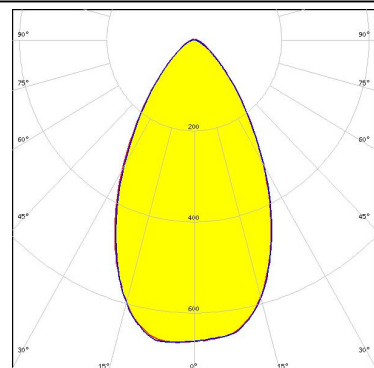
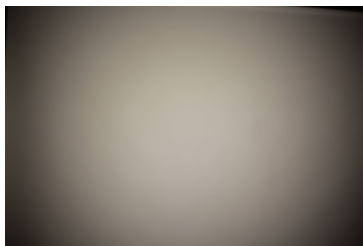
PHOTOMETRIC DATA (MEASURED):



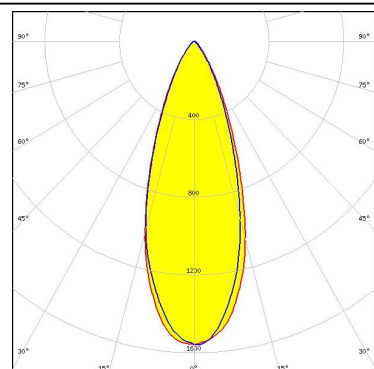
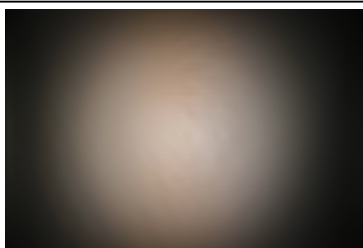
LED VERO13
FWHM 43.0°
Efficiency 75 %
Peak intensity 1.1 cd/lm
LEDs/each optic 1
Light colour White
Required components:
C16142_HEKLA-SOCKET-K



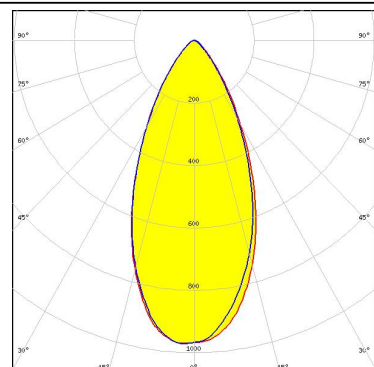
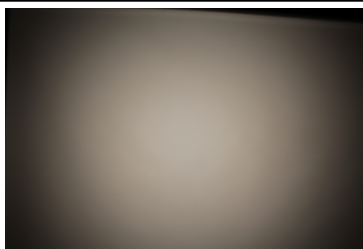
LED VERO18
FWHM 59.0°
Efficiency 73 %
Peak intensity 0.7 cd/lm
LEDs/each optic 1
Light colour White
Required components:
C16142_HEKLA-SOCKET-K



LED Vesta DTW 9mm (4W/6W/12W)
FWHM 37.0°
Efficiency 79 %
Peak intensity 1.6 cd/lm
LEDs/each optic 1
Light colour White
Required components:
C16142_HEKLA-SOCKET-K
Bender Wirth: 490 Typ L8



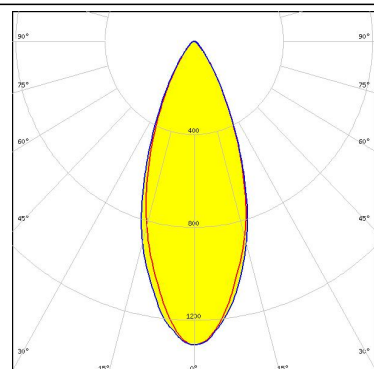
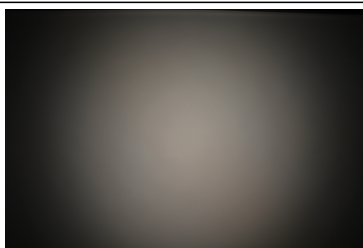
LED Vesta TW 13mm (25W) CSP
FWHM 47.0°
Efficiency 75 %
Peak intensity 1 cd/lm
LEDs/each optic 1
Light colour White
Required components:
C16142_HEKLA-SOCKET-K
Bender Wirth: 492 Typ L8



PHOTOMETRIC DATA (MEASURED):

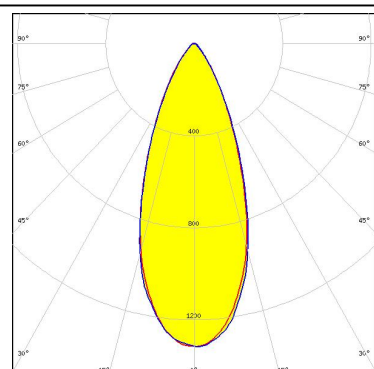
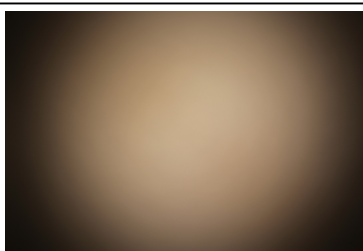


LED Vesta TW 9mm (12W) CSP
FWHM 40.0°
Efficiency 75 %
Peak intensity 1.3 cd/lm
LEDs/each optic 1
Light colour White
Required components:
C16142_HEKLA-SOCKET-K



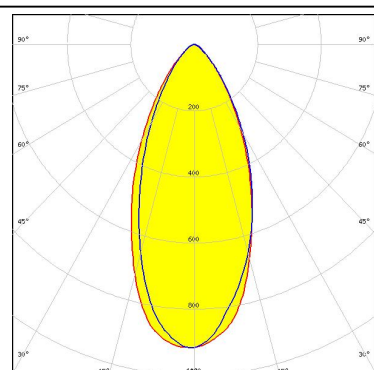
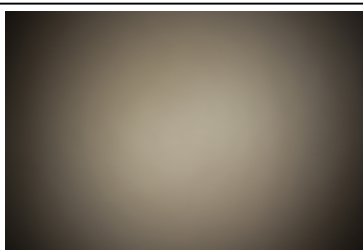
CITIZEN

LED CLC020 Series (Dim-To-Warm)
FWHM 41.0°
Efficiency 76 %
Peak intensity 1.3 cd/lm
LEDs/each optic 1
Light colour White
Required components:
C16142_HEKLA-SOCKET-K



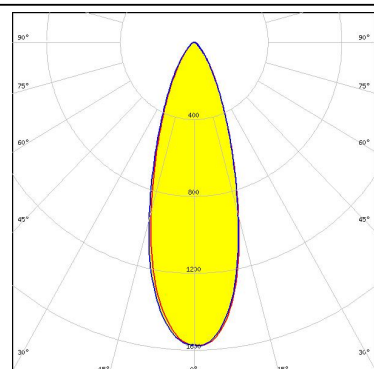
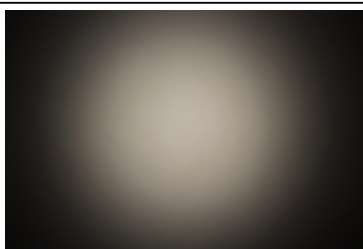
CITIZEN

LED CLC030 Series (Dim-To-Warm)
FWHM 47.0°
Efficiency 73 %
Peak intensity 0.9 cd/lm
LEDs/each optic 1
Light colour White
Required components:
C16142_HEKLA-SOCKET-K



CITIZEN

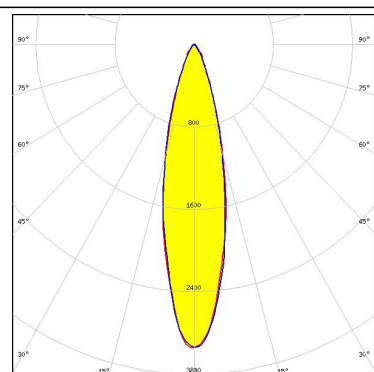
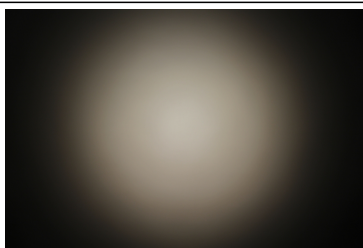
LED CLL02x/CLU02x (LES10)
FWHM 34.0°
Efficiency 77 %
Peak intensity 1.6 cd/lm
LEDs/each optic 1
Light colour White
Required components:
F15255_HEKLA-SOCKET-C



PHOTOMETRIC DATA (MEASURED):

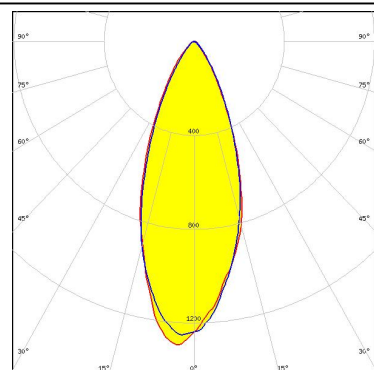
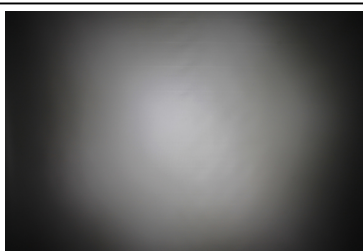
CITIZEN

LED CLU7A2 (LES 4.2mm)
 FWHM 25.0°
 Efficiency 82 %
 Peak intensity 2.9 cd/lm
 LEDs/each optic 1
 Light colour White
 Required components:
 F15255_HEKLA-SOCKET-C



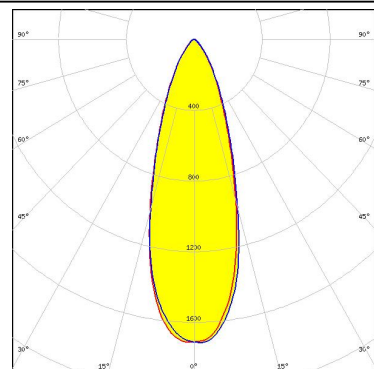
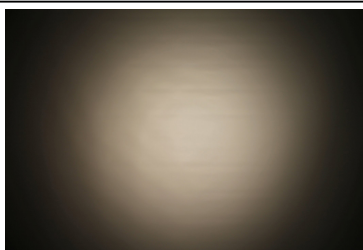
CITIZEN

LED LCN-C01B (Tunable White)
 FWHM 40.0°
 Efficiency 75 %
 Peak intensity 1.3 cd/lm
 LEDs/each optic 1
 Light colour White
 Required components:
 C16142_HEKLA-SOCKET-K
 Bender Wirth: 481 Typ L8



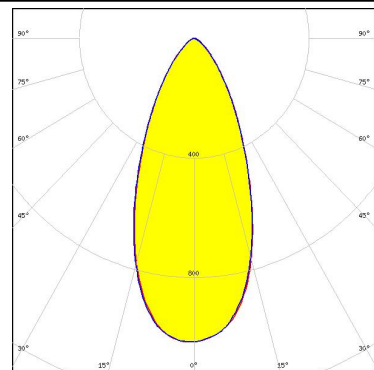
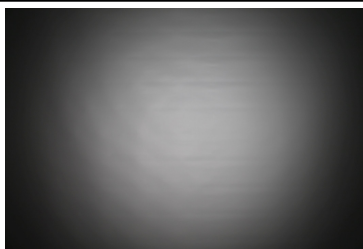
CREE

LED CMT14xx
 FWHM 33.0°
 Efficiency 81 %
 Peak intensity 1.7 cd/lm
 LEDs/each optic 1
 Light colour White
 Required components:
 F15255_HEKLA-SOCKET-C



CREE

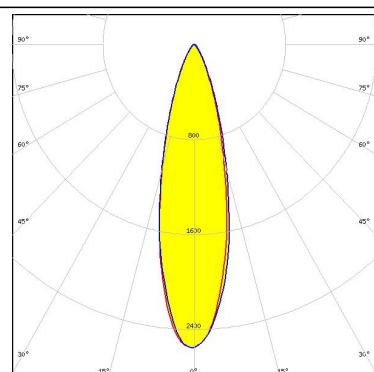
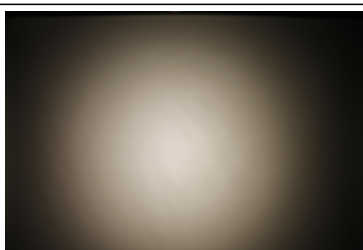
LED CMT19xx
 FWHM 45.0 + °
 Efficiency 77 %
 Peak intensity 1 cd/lm
 LEDs/each optic 1
 Light colour White
 Required components:
 F15859_HEKLA-SOCKET-I



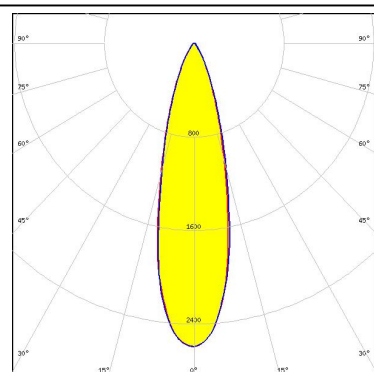
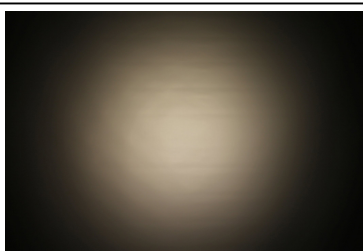
PHOTOMETRIC DATA (MEASURED):



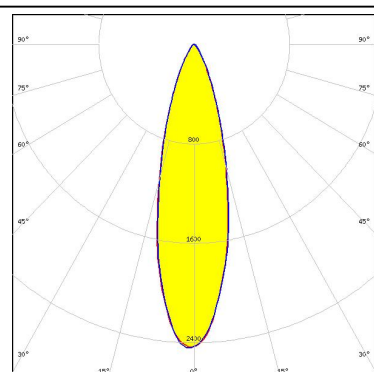
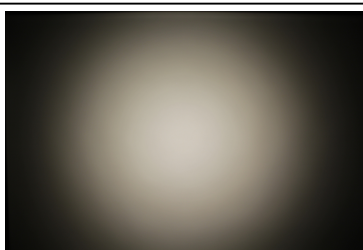
LED CXA/B 13xx
FWHM 27.0°
Efficiency 81 %
Peak intensity 2.6 cd/lm
LEDs/each optic 1
Light colour White
Required components:
F15956_HEKLA-SOCKET-J



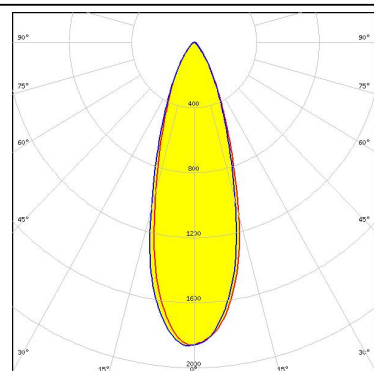
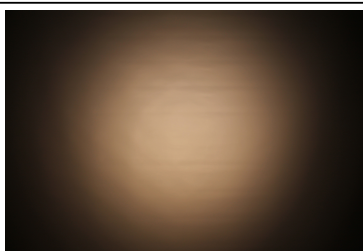
LED LUXEON CoB 1202HD
FWHM 27.0°
Efficiency 83 %
Peak intensity 2.6 cd/lm
LEDs/each optic 1
Light colour White
Required components:
F15848_HEKLA-SOCKET-G



LED LUXEON CoB 1202s
FWHM 27.0°
Efficiency 81 %
Peak intensity 2.4 cd/lm
LEDs/each optic 1
Light colour White
Required components:
F15848_HEKLA-SOCKET-G



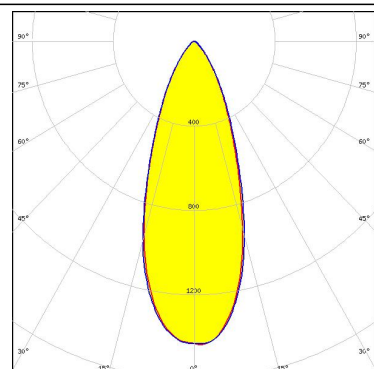
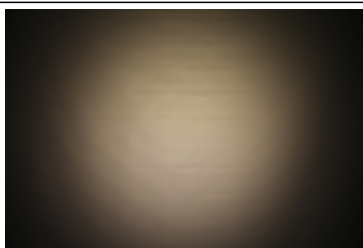
LED LUXEON CoB 1204HD
FWHM 32.0°
Efficiency 83 %
Peak intensity 1.9 cd/lm
LEDs/each optic 1
Light colour White
Required components:
F15858_HEKLA-SOCKET-H



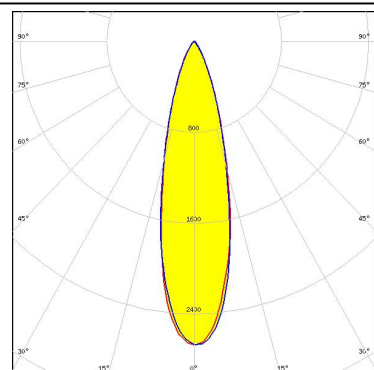
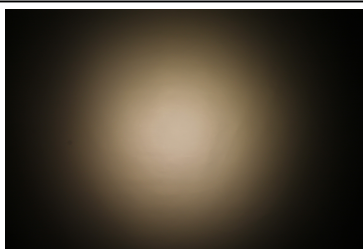
PHOTOMETRIC DATA (MEASURED):



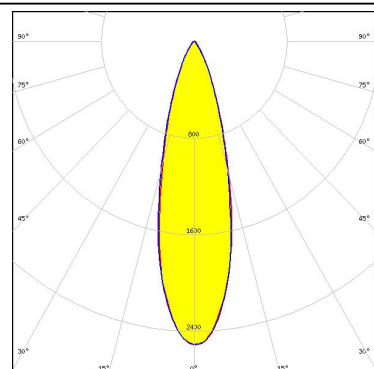
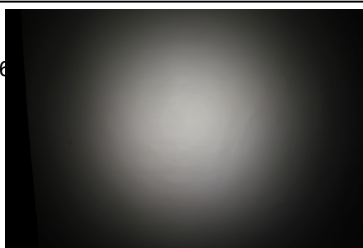
LED LUXEON CoB 1205HD
 FWHM 38.0°
 Efficiency 81 %
 Peak intensity 1.4 cd/lm
 LEDs/each optic 1
 Light colour White
 Required components:
 F15858_HEKLA-SOCKET-H



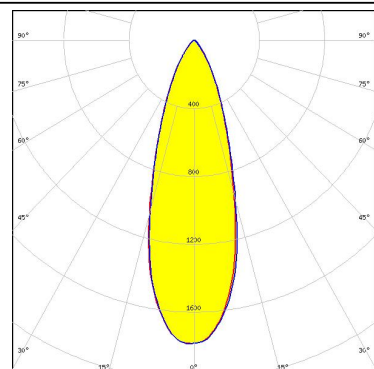
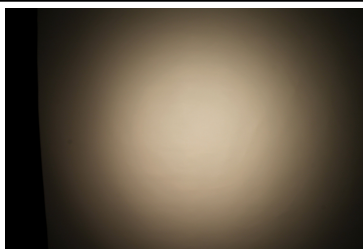
LED LUXEON CX Plus CoB - HD S01H4
 FWHM 27.0°
 Efficiency 82 %
 Peak intensity 2.7 cd/lm
 LEDs/each optic 1
 Light colour White
 Required components:
 Bender Wirth: 634c Lena



LED LUXEON CX Plus CoB - HD S01H6 / HD S02H6
 FWHM 28.0°
 Efficiency 82 %
 Peak intensity 2.5 cd/lm
 LEDs/each optic 1
 Light colour White
 Required components:
 Bender Wirth: 634c Hekla



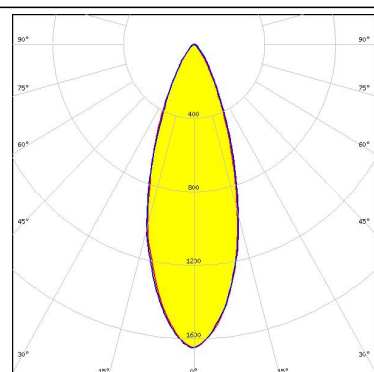
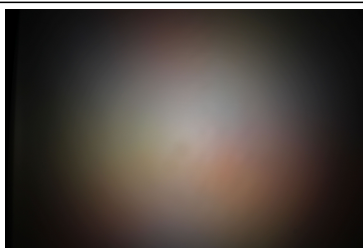
LED LUXEON CX Plus CoB - HD S04H9
 FWHM 33.0°
 Efficiency 81 %
 Peak intensity 1.8 cd/lm
 LEDs/each optic 1
 Light colour White
 Required components:
 Bender Wirth: 634c Hekla



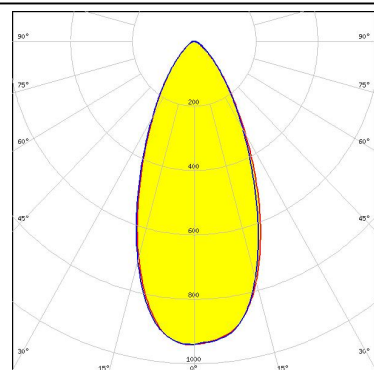
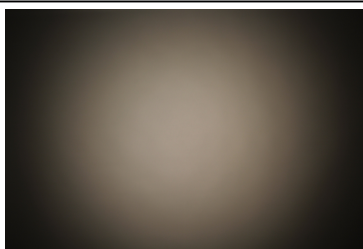
PHOTOMETRIC DATA (MEASURED):



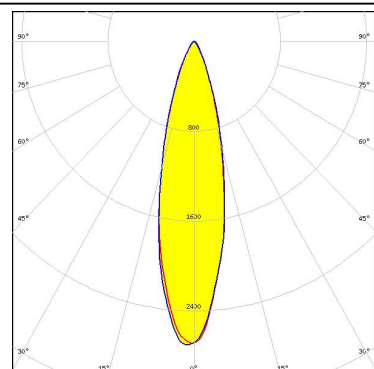
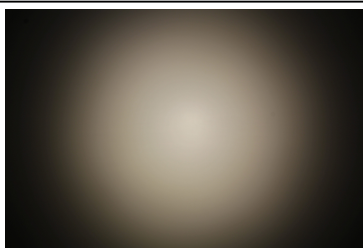
LED LUXEON Fusion 12-up (20x24)
 FWHM 35.0°
 Efficiency 77 %
 Peak intensity 1.6 cd/lm
 LEDs/each optic 1
 Light colour Tunable White
 Required components:
 C16142_HEKLA-SOCKET-K
 Bender Wirth: 442 Typ L8



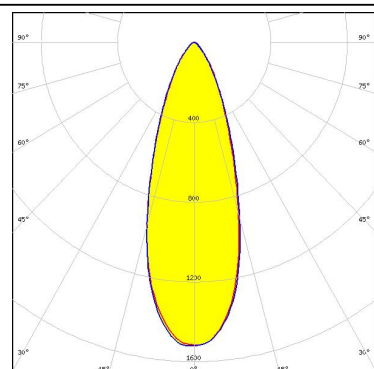
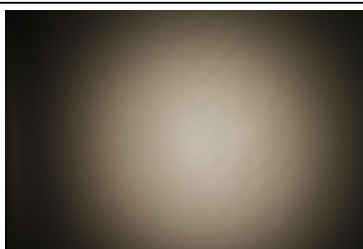
LED CxM-14 (19x19)
 FWHM 47.0°
 Efficiency 75 %
 Peak intensity 0.9 cd/lm
 LEDs/each optic 1
 Light colour White
 Required components:
 F15859_HEKLA-SOCKET-I



LED CXM-4
 FWHM 26.0°
 Efficiency 79 %
 Peak intensity 2.7 cd/lm
 LEDs/each optic 1
 Light colour White
 Required components:
 F15255_HEKLA-SOCKET-C



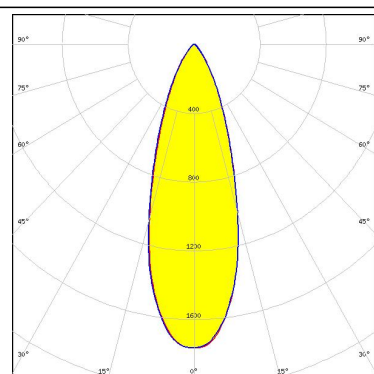
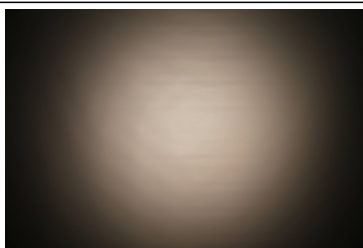
LED CxM-9 (13.5x13.5)
 FWHM 35.0°
 Efficiency 78 %
 Peak intensity 1.5 cd/lm
 LEDs/each optic 1
 Light colour White
 Required components:
 F15255_HEKLA-SOCKET-C



PHOTOMETRIC DATA (MEASURED):

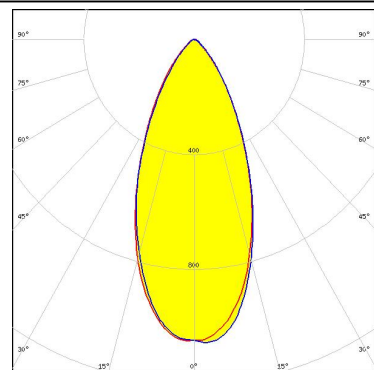
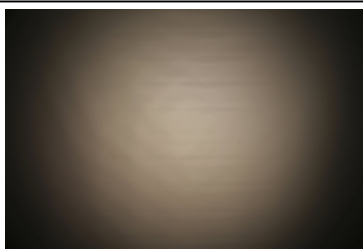
PHILIPS

LED Fortimo SLM L09 CoB
 FWHM 34.0°
 Efficiency 82 %
 Peak intensity 1.8 cd/lm
 LEDs/each optic 1
 Light colour White
 Required components:
 F15858_HEKLA-SOCKET-H



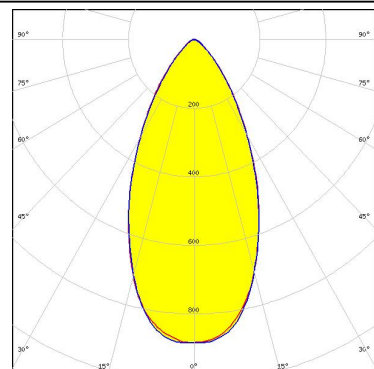
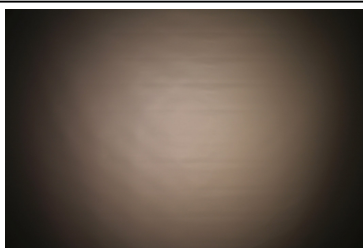
PHILIPS

LED Fortimo SLM L13 CoB
 FWHM 45.0°
 Efficiency 77 %
 Peak intensity 1.1 cd/lm
 LEDs/each optic 1
 Light colour White
 Required components:
 C16142_HEKLA-SOCKET-K
 Bender Wirth: 432 Typ L8



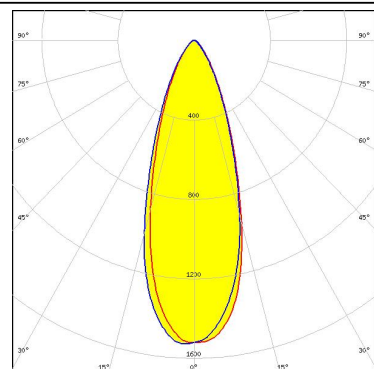
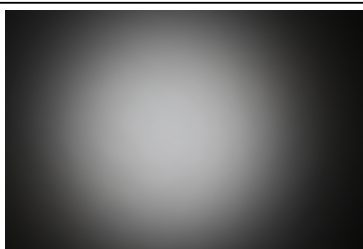
PHILIPS

LED Fortimo SLM L15 CoB
 FWHM 50.0°
 Efficiency 76 %
 Peak intensity 0.9 cd/lm
 LEDs/each optic 1
 Light colour White
 Required components:
 C16142_HEKLA-SOCKET-K
 Bender Wirth: 499 Typ L8



SAMSUNG

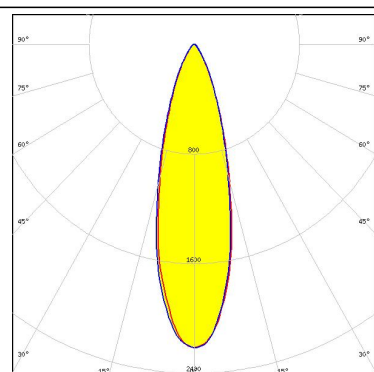
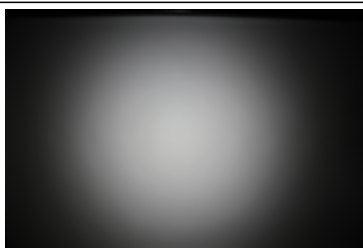
LED LC003D / LC006D / LC009D / LC013D
 FWHM 35.0°
 Efficiency 79 %
 Peak intensity 1.5 cd/lm
 LEDs/each optic 1
 Light colour White
 Required components:
 F15255_HEKLA-SOCKET-C



PHOTOMETRIC DATA (MEASURED):

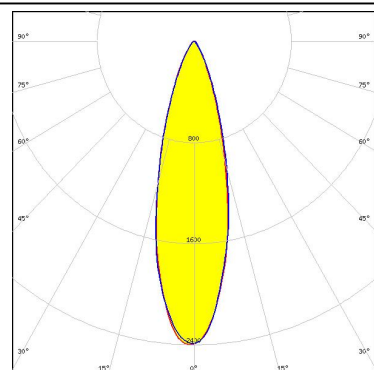
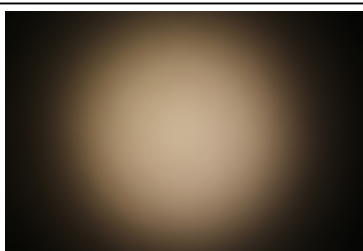
SAMSUNG

LED LC010C
FWHM 28.0°
Efficiency 79 %
Peak intensity 2.2 cd/lm
LEDs/each optic 1
Light colour White
Required components:
F15848_HEKLA-SOCKET-G



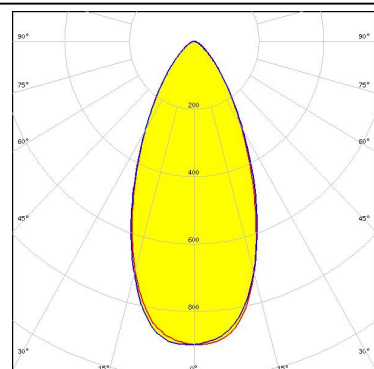
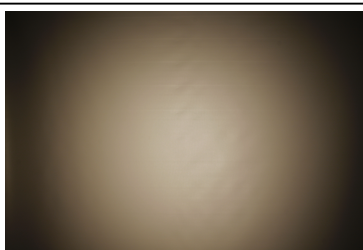
SAMSUNG

LED LC010C G2
FWHM 28.0°
Efficiency 80 %
Peak intensity 2.4 cd/lm
LEDs/each optic 1
Light colour White
Required components:
F15255_HEKLA-SOCKET-C



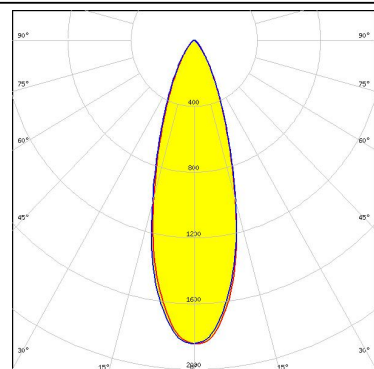
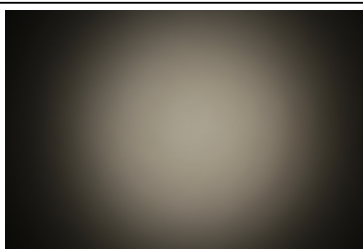
SAMSUNG

LED LC016D / LC019D / LC026D / LC033D
FWHM 48.0°
Efficiency 75 %
Peak intensity 0.9 cd/lm
LEDs/each optic 1
Light colour White
Required components:
F15859_HEKLA-SOCKET-I



SAMSUNG

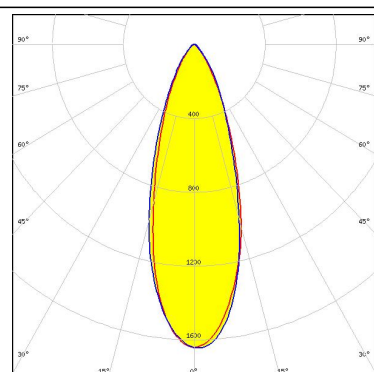
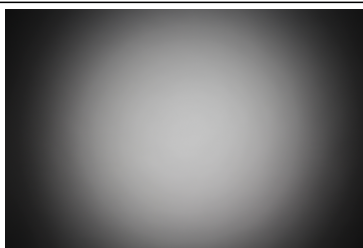
LED LC020C
FWHM 32.0°
Efficiency 80 %
Peak intensity 1.8 cd/lm
LEDs/each optic 1
Light colour White
Required components:



PHOTOMETRIC DATA (MEASURED):

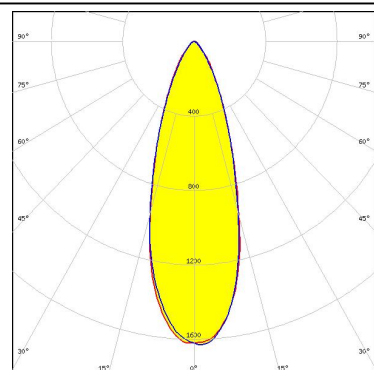
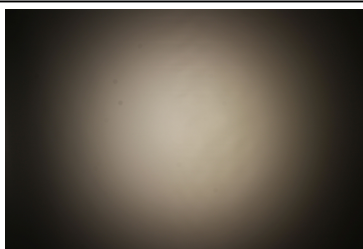
SAMSUNG

LED LC020C G2
FWHM 34.0°
Efficiency 79 %
Peak intensity 1.7 cd/lm
LEDs/each optic 1
Light colour White
Required components:
F15859_HEKLA-SOCKET-I



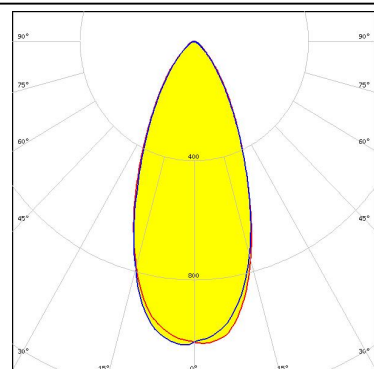
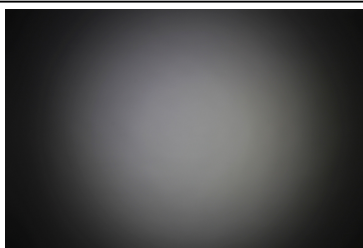
TRIDONIC

LED SLE G7 LES09
FWHM 34.0°
Efficiency 78 %
Peak intensity 1.6 cd/lm
LEDs/each optic 1
Light colour White
Required components:
F15255_HEKLA-SOCKET-C



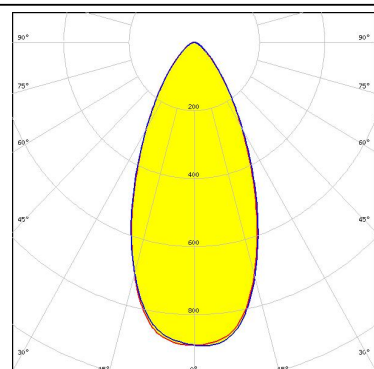
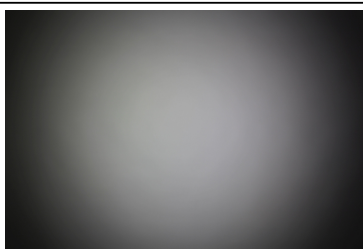
TRIDONIC

LED SLE G7 LES13
FWHM 45.0°
Efficiency 75 %
Peak intensity 1 cd/lm
LEDs/each optic 1
Light colour White
Required components:
F15859_HEKLA-SOCKET-I



TRIDONIC

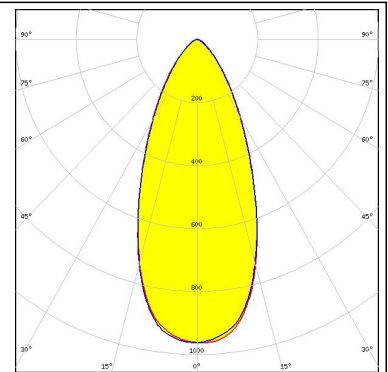
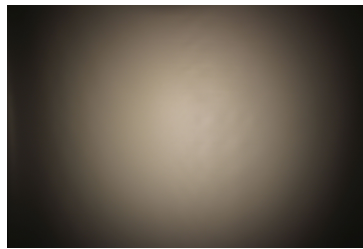
LED SLE G7 LES15
FWHM 48.0°
Efficiency 75 %
Peak intensity 0.9 cd/lm
LEDs/each optic 1
Light colour White
Required components:
F15859_HEKLA-SOCKET-I



PHOTOMETRIC DATA (MEASURED):

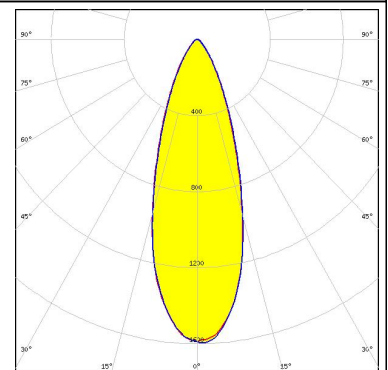
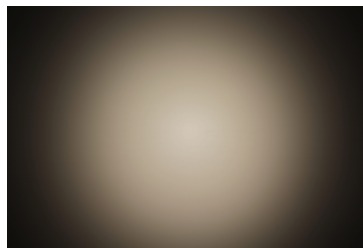
XICATO

LED XOB 14.5 mm
FWHM 45.0°
Efficiency 75 %
Peak intensity 1 cd/lm
LEDs/each optic 1
Light colour White
Required components:
F15859_HEKLA-SOCKET-I



XICATO

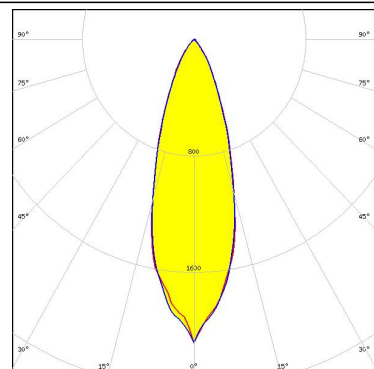
LED XOB 9.8 mm
FWHM 35.0°
Efficiency 78 %
Peak intensity 1.6 cd/lm
LEDs/each optic 1
Light colour White
Required components:
F15255_HEKLA-SOCKET-C



PHOTOMETRIC DATA (SIMULATED):

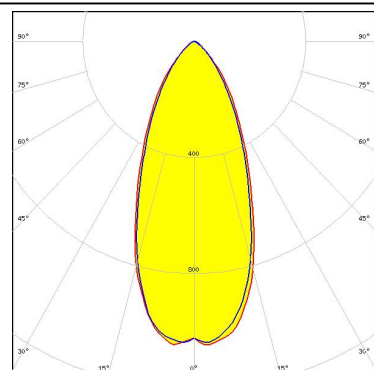


LED VERO10
FWHM 32.0°
Efficiency 83 %
Peak intensity 2.1 cd/lm
LEDs/each optic 1
Light colour White
Required components:
F15616_HEKLA-SOCKET-F

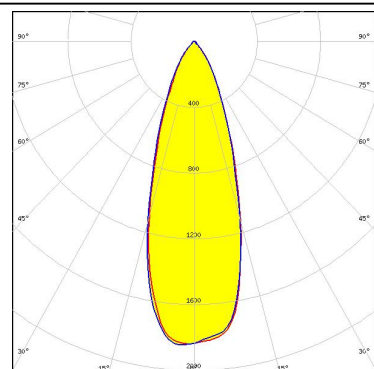


CITIZEN

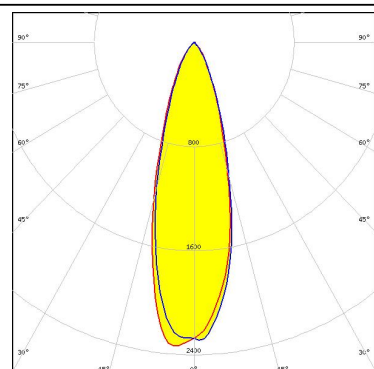
LED CLL03x/CLU03x
FWHM 45.0°
Efficiency 77 %
Peak intensity 1.1 cd/lm
LEDs/each optic 1
Light colour White
Required components:
F15859_HEKLA-SOCKET-I



LED CXA/B 15xx
FWHM 24.0°
Efficiency 84 %
Peak intensity 1.9 cd/lm
LEDs/each optic 1
Light colour White
Required components:
F15256_HEKLA-SOCKET-D



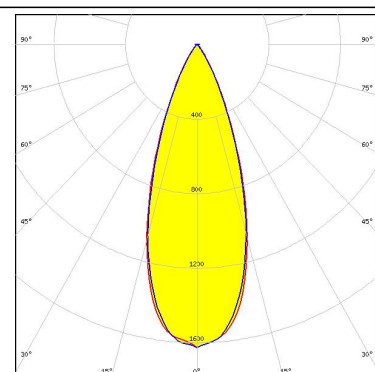
LED CXA/B 15xx
FWHM 30.0°
Efficiency 83 %
Peak intensity 2.4 cd/lm
LEDs/each optic 1
Light colour White
Required components:
F15256_HEKLA-SOCKET-D



PHOTOMETRIC DATA (SIMULATED):

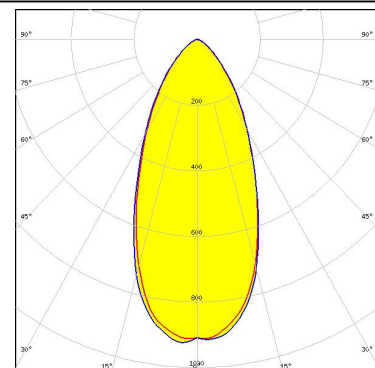


LED NFSWE11A
 FWHM 37.0°
 Efficiency 72 %
 Peak intensity 1.6 cd/lm
 LEDs/each optic 30
 Light colour White
 Required components:



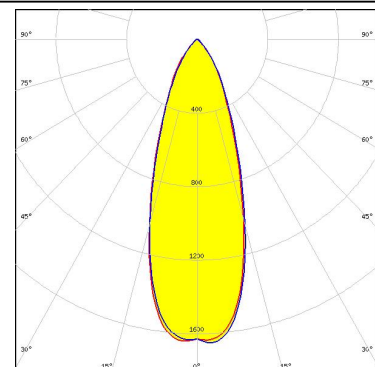
SEOUL SEMICONDUCTOR

LED MJT COB LES 14.5
 FWHM 48.0°
 Efficiency 78 %
 Peak intensity 0.9 cd/lm
 LEDs/each optic 1
 Light colour White
 Required components:
 F15859_HEKLA-SOCKET-I



SEOUL SEMICONDUCTOR

LED MJT COB LES 9.8
 FWHM 36.0°
 Efficiency 82 %
 Peak intensity 1.7 cd/lm
 LEDs/each optic 1
 Light colour White
 Required components:
 F15255_HEKLA-SOCKET-C



GENERAL INFORMATION:

NOTE: The typical beam angle will be changed by different color, chip size and chip position tolerance. The typical total beam angle is the full angle measured where the luminous intensity is half of the peak value.

Due to use of high power COB's with this product, special attention to proper thermal design is highly recommended. LEDiL has no liability for direct, indirect or consecutive damages arising from the LEDiL products being used outside of the recommended temperature range.

MATERIALS:

As part of our continuous research and improvement processes, and to ensure the best possible quality and availability of our products, LEDiL reserves the right to change material grades without notice.

PRODUCT DATA USER AGREEMENT AND DISCLAIMER:

The measured data in the provided downloadable LEDiL Product Datasheets and Mechanical 2D-Drawings is rounded and provided as reference for planning. LEDiL Oy's optical specifications have been verified by conducting performance testing of the products in accordance with the company's quality system. The reported data are averaged results of multiple measurements with typical variation. LEDiL Oy reserves the right to without prior notification make changes and improvements to its products.

LEDiL Oy assumes neither warranty, nor guarantee nor any other liability of any kind for the contents and correctness of the provided data. The provided data has been generated with highest diligence but the provided data may in reality not represent the complete possible variation range of all intrinsic parameters. Therefore, in certain cases a deviation from the provided data could occur.

LEDiL Oy reserves the right to undertake technical changes of its products without further notification which could lead to changes in the provided data. LEDiL Oy assumes no liability of any kind for the possible deviation from any provided data or any other damage resulting from the usage of the provided data.

The user agrees to this disclaimer and user agreement with the download or usage of the provided files.

LEDiL Oy

Joensuunkatu 13
FI-24240 SALO
Finland

LEDiL Inc.

228 West Page Street
Suite D
Sycamore IL 60178
USA

Local sales and technical support

[www.ledil.com/
where_to_buy](http://www.ledil.com/where_to_buy)

Shipping locations

Salo, Finland
Hong Kong, China

Distribution Partners

[www.ledil.com/
where_to_buy](http://www.ledil.com/where_to_buy)