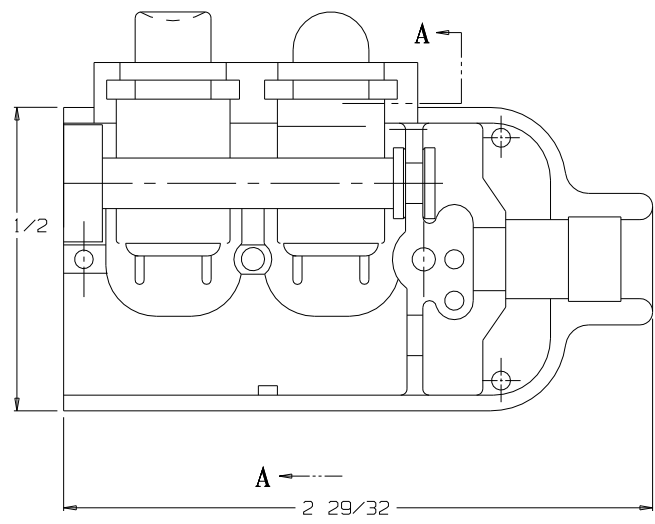
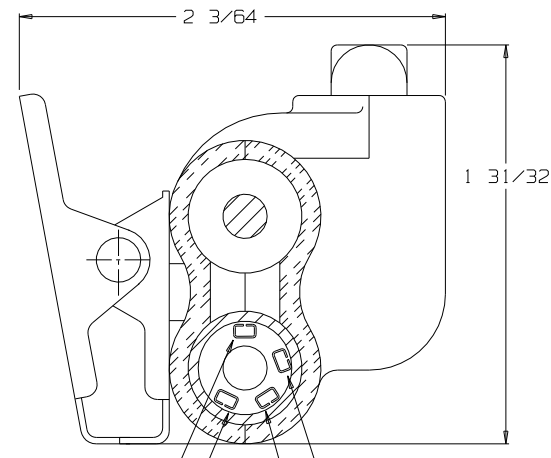


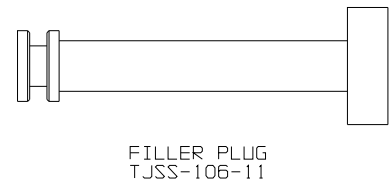
**C** TJSS-104HCSP1



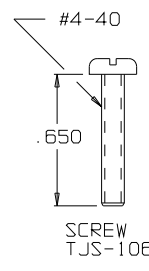
VIEW WITH HALF SHELL REMOVED



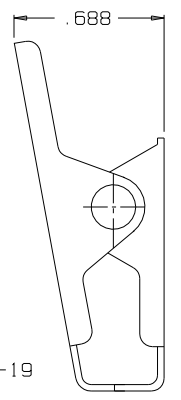
SECTION A-A



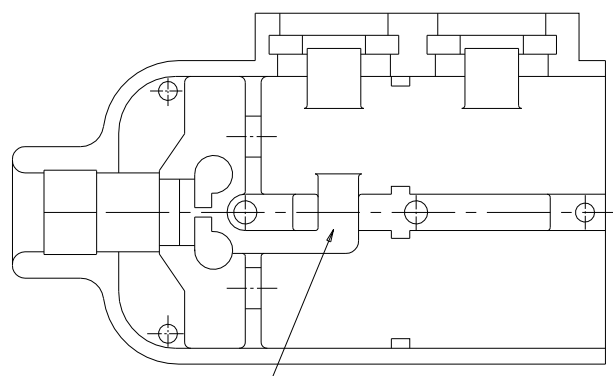
FILLER PLUG  
TJSS-106-11



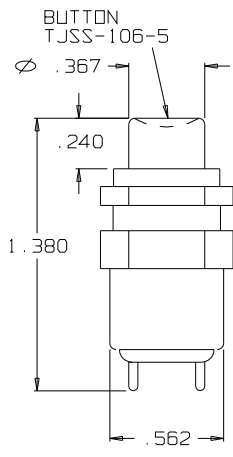
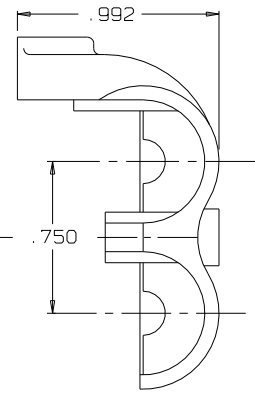
SCREW  
TJSS-106-19



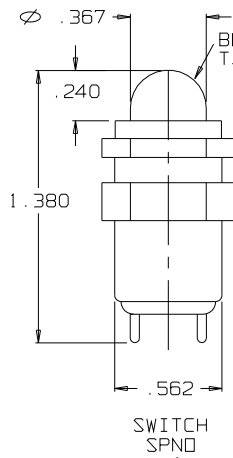
CLIP ASSY  
TJSS-104-3A



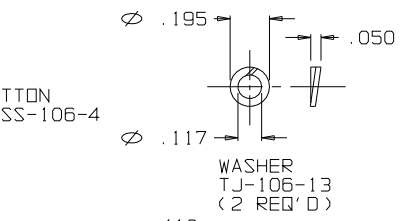
CHANNEL FOR SWITCH LEADS  
SHELL, HALF TJSS-106-2HC



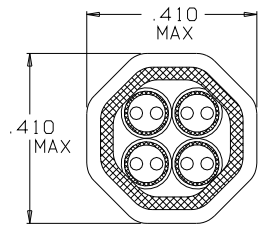
BUTTON  
TJSS-106-5



BUTTON  
TJSS-106-4

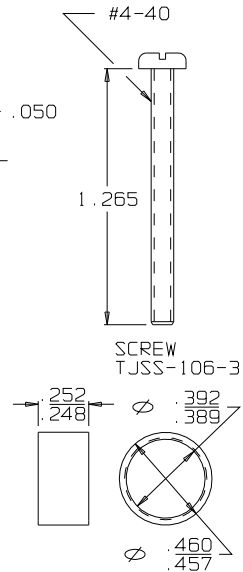


WASHER  
TJ-106-13  
(2 REQ'D)



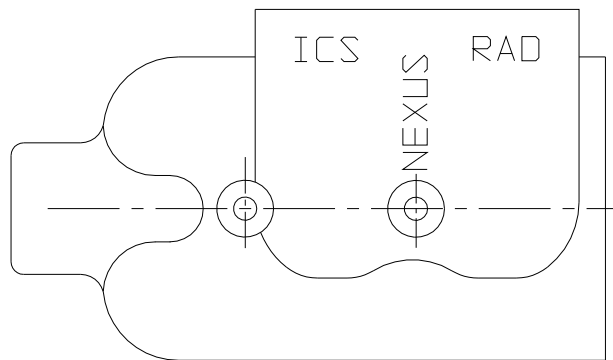
SECTION B-B  
STRAIN RELIEF  
CLAMP TJSS-106-12

AFTER CRIMPING  
USE DANIELS HX4 CRIMP  
TOOL AND Y146 DIE SET  
SCALE 4:1

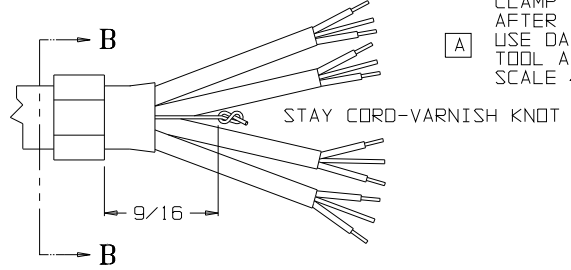
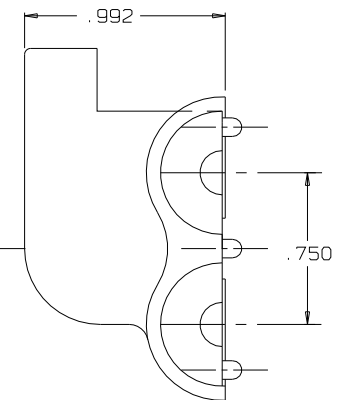


SCREW  
TJSS-106-3

RING, STRAIN RELIEF  
TJSS-106-12



SHELL, HALF TJSS-106-1HC



STAY CORD-VARNISH KNOT

THIS DOCUMENT CONTAINS PROPRIETARY INFORMATION OF NEXUS, INCORPORATED AND SUCH INFORMATION MAY NOT BE DISCLOSED TO OTHERS FOR ANY PURPOSE OR USED FOR ANY PURPOSE WITHOUT THE WRITTEN CONSENT OF NEXUS.

DWN BY M. N. F.	DATE 12/14/94	MATERIAL	
CHECKED BY L. SMITH	DATE 4/6/95	FINISH	
APPR BY L. SMITH	DATE 4/6/95	WEIGHT	SCALE NONE
UNLESS OTHERWISE SPECIFIED DIMENSIONS ARE IN INCHES TOLERANCES ON FRACTIONS DECIMALS ANGLES		TITLE JACK-TELEPHONE-BIAXIAL SPECIAL CONFIGURATION	

A	ADD DANIELS HX4 CRIMP TOOL AND Y146 DIE SET	026	9/16/94	GPH
LET.	REVISION	CN #	DATE	CHK

DO NOT SCALE DWG.		SHEET 1 OF 1
-------------------	--	--------------

**NEXUS**  
STAMFORD, CONN

SIZE DWG NO.  
**C** TJSS-104HCSP1