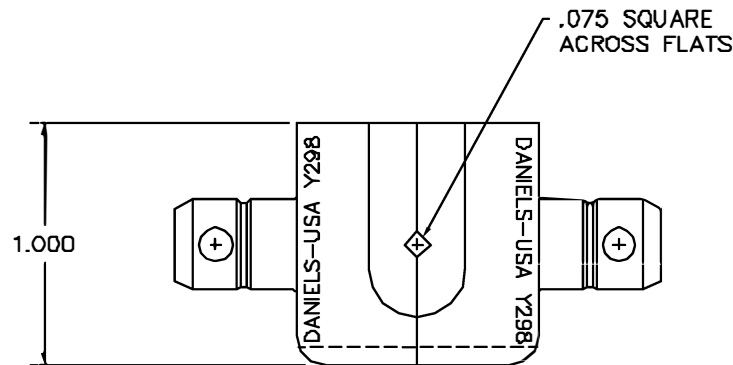
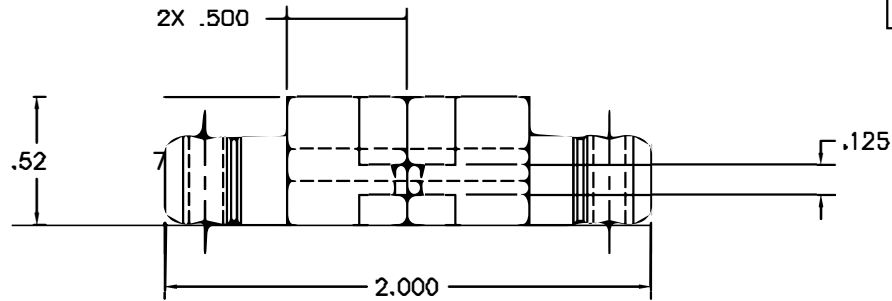



REVISIONS				
REV. STN.	E.C.G. NUMBER	DESCRIPTION	BY DATE	APP'D DATE
1		ORIGINAL RELEASE	D.A.D. 12-18-87	DE 12-87



**UNCONTROLLED DOCUMENT  
WILL NOT BE UPDATED**

<b>RESTRICTED &amp; CONFIDENTIAL</b> CONFIDENTIAL PROPERTY OF DANIELS MANUFACTURING CORP. NOT TO BE DISCLOSED TO OTHERS, REPRODUCED OR USED FOR ANY OTHER PURPOSE EXCEPT AS AUTHORIZED IN WRITING BY DANIELS MANUFACTURING. MUST BE RETURNED TO DANIELS MANUFACTURING CORP. ON COMPLETION OF ORDER OR OTHER PURPOSE FOR WHICH LENT.	MATERIAL	ITEM	PART NO.	QTY.	DESCRIPTION/REMARKS		
	HEAT TREAT	DRN	D. DEPAIVA	DATE 2/16/87	 DANIELS MANUFACTURING CORP. ORLANDO, FLORIDA CAGE 11851		
		CHKD	DE	DATE 12/87			
	FINISH	APPL		DATE	TITLE	DIE SET ENVELOPE DRAWING	
APPL			DATE				
DO NOT SCALE DRAWING	NOTE: THIS DRAWING IS AN OUTLINE DRAWING OF THE RESPECTIVE DMC PART NUMBER INDICATED. ACTUAL DMC PART NUMBER IS DRAWING NUMBER WITHOUT THE "-ENV" SUFFIX.	WHERE USED:	SIZE	SCALE	CAD P/N	SHEET	OF
			B	2X	Y298-ENV	1	1
		POSTING	DWG. NO.	REV.			
			Y298-ENV	1			