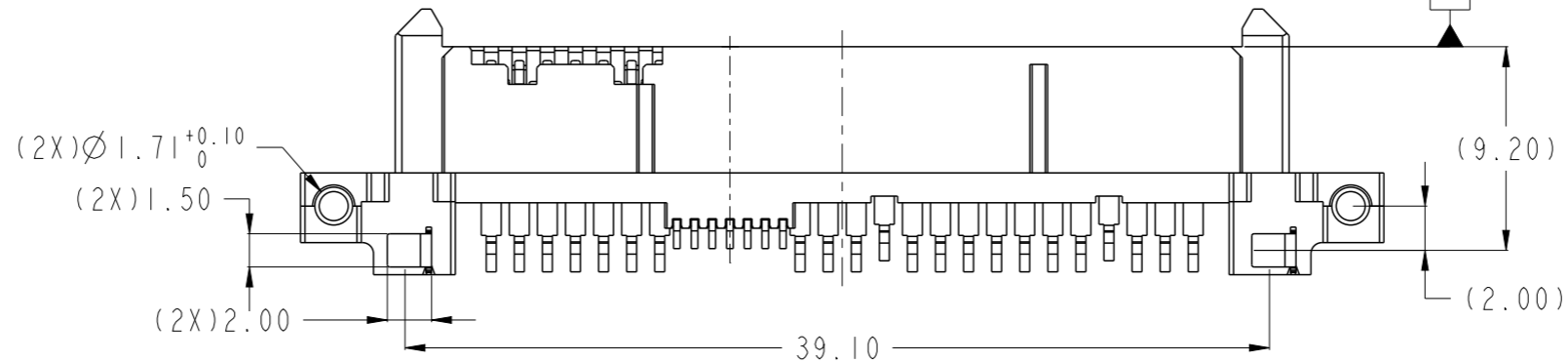
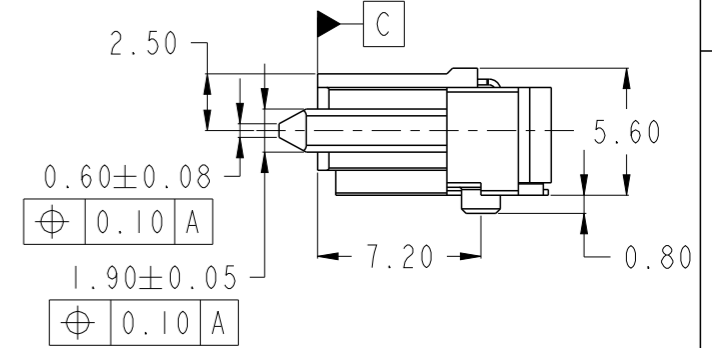
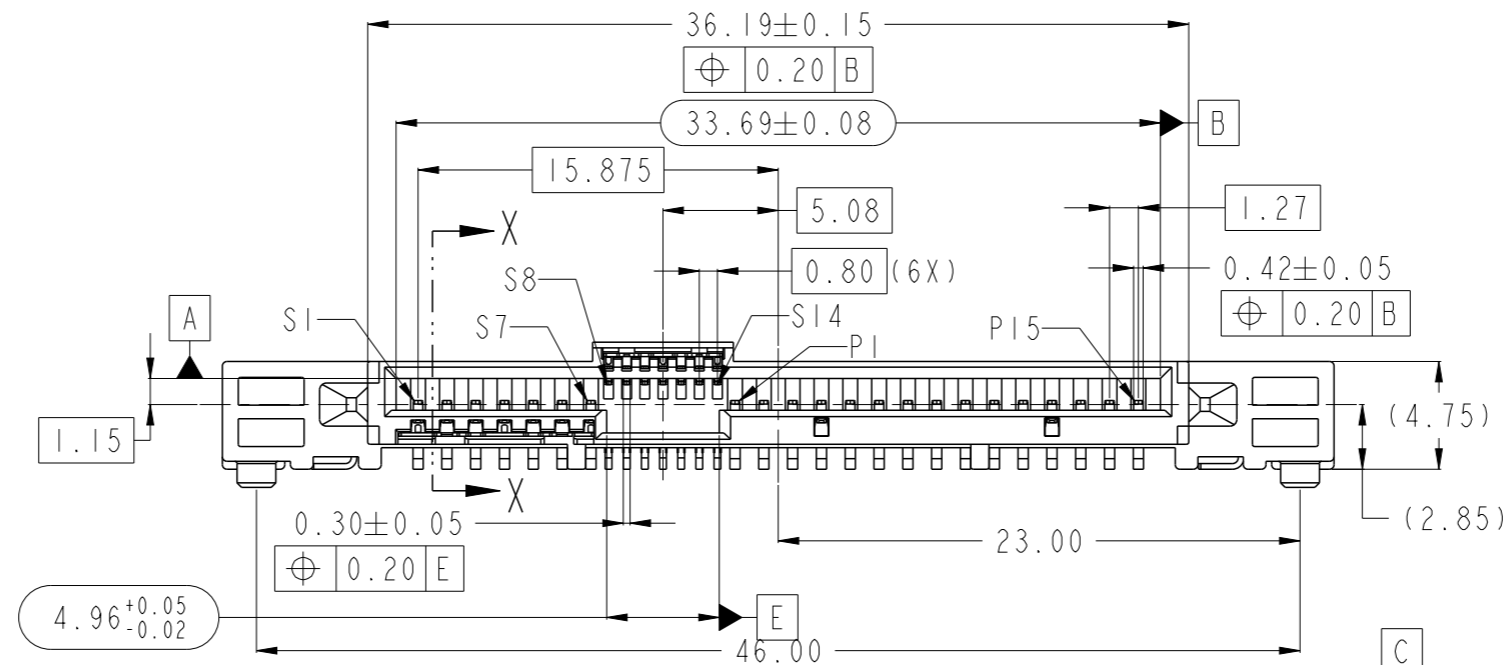
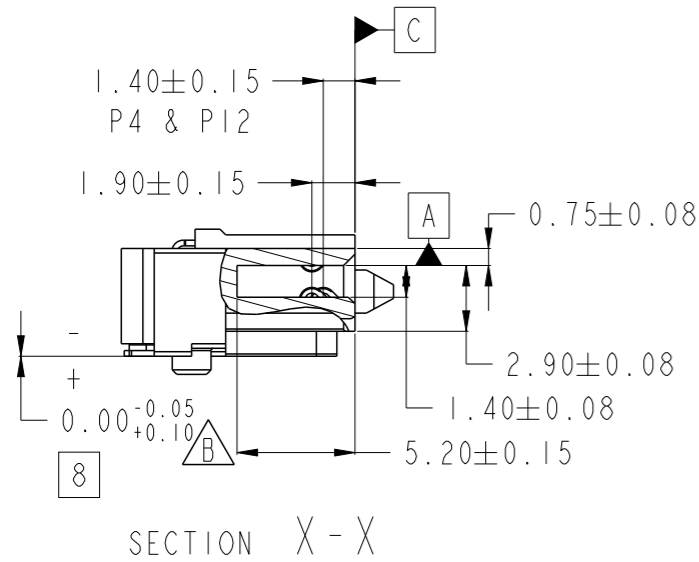
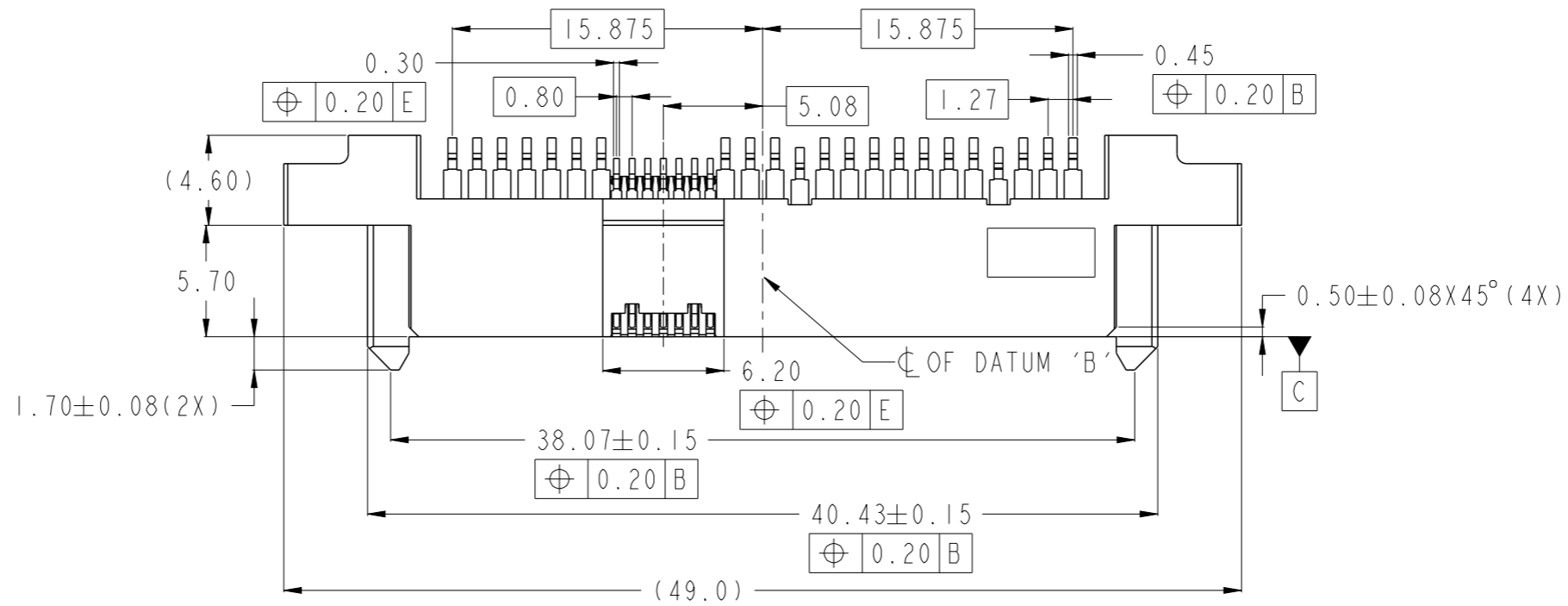


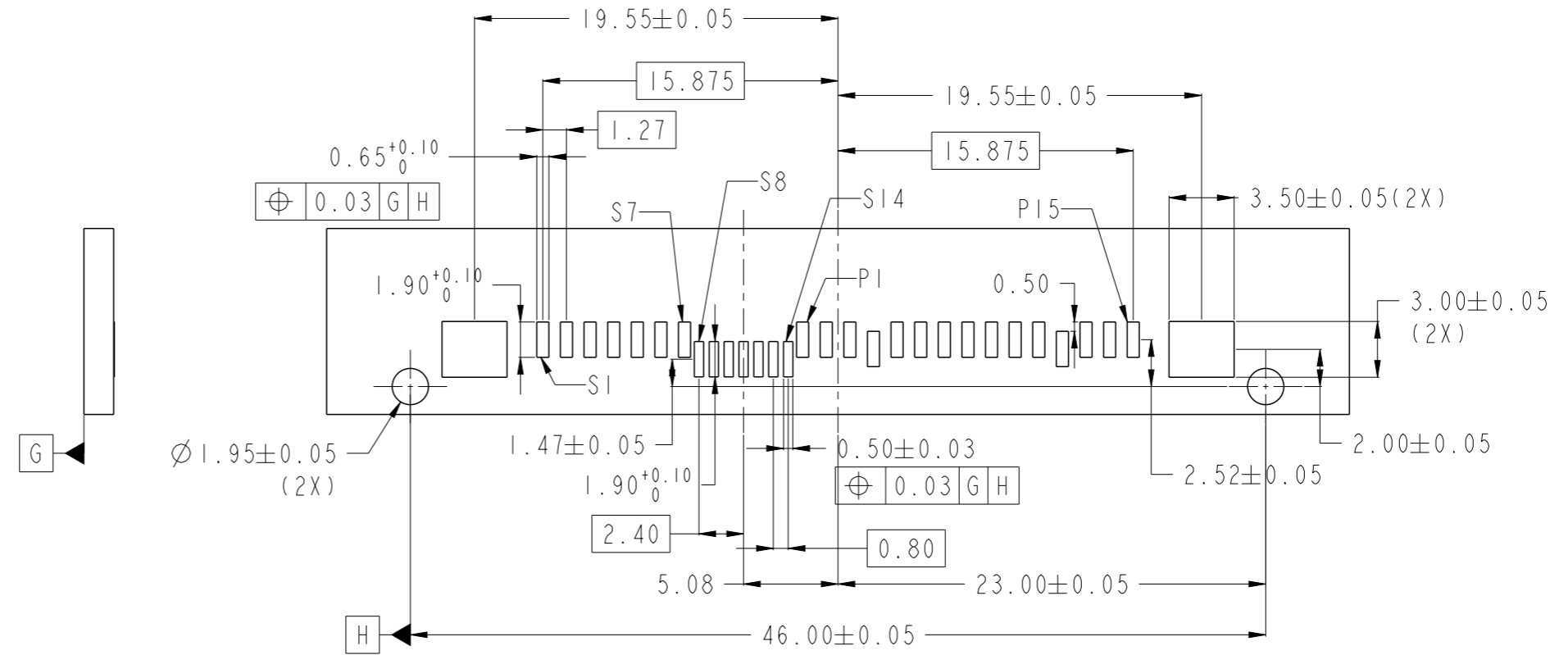
PRODUCT P/N  
SEE TABLE, SHT 2



SCALE 3:1

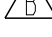
spec ref	-	dr	Koon-Poh Tay	2015/04/08	projection	mm	size	A3	scale	1:1		
tolerance std	ISO 406 ISO 1101	eng	Jeffrey Lim	2018/05/24		← →	ecn no	ELX-S-29906-1				
TOLERANCES UNLESS OTHERWISE SPECIFIED		chr	-	appr			Koon-Poh Tay	2018/06/07	rel level	Released		
surface	linear	0.X	±0.20	<b>Amphenol FCI</b>		12G SAS RECEPTACLE R/A SMT 2.85mm Z-HEIGHT		dwg no	10124274		rev	B
	angular	0°	±2°									
ISO 1302		cat. no.	-		Product - Customer Drw			sheet 1 of 2				

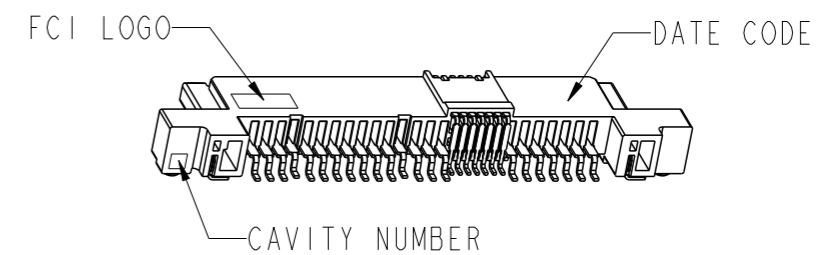
PRODUCT P/N	PACKAGING
10124274-001LF	TRAY
10124274-001TRLF	TAPE & REEL

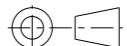


SCALE 3:1

NOTES:

- MATERIALS:
  - HOUSING: HIGH TEMP THERMOPLASTIC, UL 94V-0, COLOUR: BLACK
  - TERMINAL & HOLD DOWN: COPPER ALLOY
- FINISH:
  - TERMINAL:
    - CONTACT POINT: 30u" MIN Au PLATING OVER 50u" MIN NICKEL
    - SOLDER TAIL: 100u" MIN TIN OVER 50u" MIN NICKEL
  - HOLD DOWN: 100u" MIN TIN OVER 50u" MIN NICKEL
- THE STANDARD PACKAGING IS IN TRAY, UNLESS OTHERWISE SPECIFIED.
- PRODUCT SPECIFICATION: GS-12-1120
- PACKAGING SPECIFICATION: GS-14-841 (TRAY); GS-14-966 (TAPE & REEL)
- THE HOUSING WILL WITHSTAND EXPOSURE TO 260° PEAK TEMPERATURE FOR 10 SECONDS IN A CONVECTION, INFRA-RED OR VAPOR PHASE REFLOW OVEN.
- THIS PRODUCT MEETS EUROPEAN UNION DIRECTIVES AND OTHER COUNTRY REGULATIONS AS DESCRIBED IN GS-47-0004.
- PART NUMBER ENDING IN "LF": DENOTES LEAD FREE.
- ALL SOLDER TAIL MUST BE WITHIN 0.10MM MAX COPLANARITY.
- THIS PRODUCT IS COMPLY WITH SFF-8680 SPECIFICATION
- A SYMBOL  WILL BE NEXT TO ANY DIMENSION, VIEW, OR NOTE WHICH HAS BEEN MODIFIED WITH THE CURRENT DRAWING REVISION.



spec ref	-	dr	Koon-Poh Tay	2015/04/08	projection	mm	size	A3	scale	1:1	
tolerance std	ISO 406 ISO 1101	eng	Jeffrey Lim	2018/05/24		← →	ecn no	ELX-S-29906-1			
TOLERANCES UNLESS OTHERWISE SPECIFIED		chr	-	apppr				Koon-Poh Tay	2018/06/07	product family	-
surface	linear	0.X	±0.20	<b>Amphenol FCI</b>	12G SAS RECEPTACLE R/A SMT		dwg no	10124274		rev	B
		0.XX	±0.20		2.85mm Z-HEIGHT						
	angular	0°	±2°		cat. no.	-	Product - Customer Drw	sheet 2 of 2			