

# Terminations

## BMA Blind Mate Type

### DC - 18.0 GHz - 0.5 Watt High Performance

- Low VSWR
- Rugged Stainless Steel Construction
- Small Size, Light Weight
- Bead Chain available on all Models

Midwest Microwave's BMA Miniature series of high performance coaxial Terminations provide temperature stable, ruggedly built, low VSWR precision performance in a compact light weight package size. Bead Chains are available with all of the types described.



#### SPECIFICATIONS

**Impedance:** 50 Ohms

**Frequency:** DC - 18.0 GHz

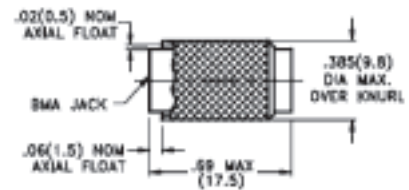
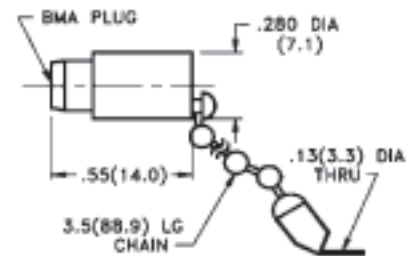
**VSWR:** 1.10 + 0.01 (f GHz)

**Power:** 0.5 Watts max @ 25 °C

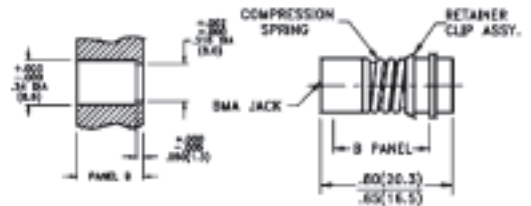
**Operating Temperature Range:** -65 to +125 °C

**Finish:** Passivated Stainless Steel

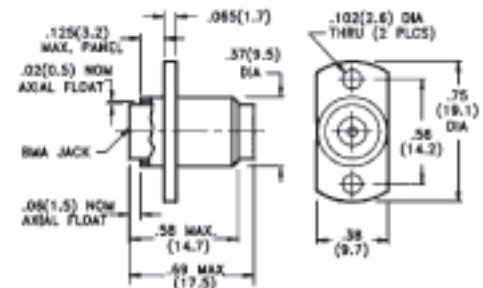
DC - 18.0 GHz	2191 Series	Model Numbers
Male Plug	Male Plug with Chain	
TRM-2191-M0-BMA-02	TRM-2191-MC-BMA-02	
Female Jack	Female Jack with Chain	
TRM-2191-F0-BMA-02	TRM-2191-FC-BMA-02	



DC - 18.0 GHz	2192 Series	Model Numbers
Female Jack	TRM-2192-F0-BMA-02	



DC - 18.0 GHz	2193 Series	Model Numbers
Female Jack	TRM-2193-F0-BMA-02	



Note: Bead Chains are 3.5 inches long.