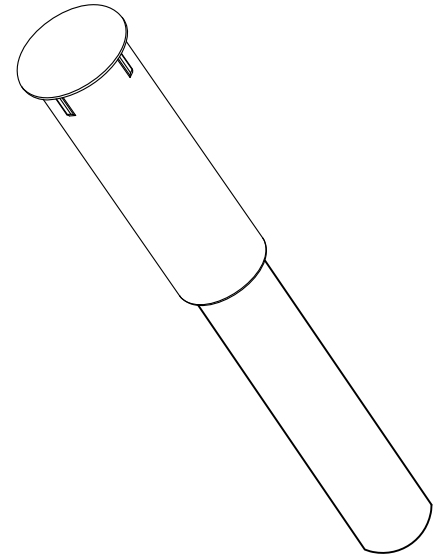
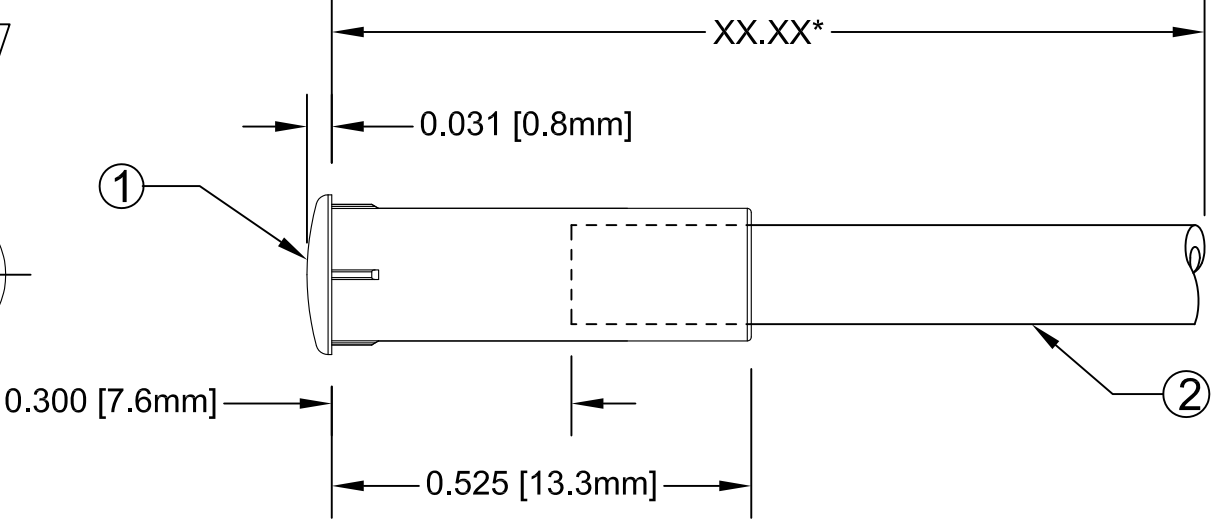
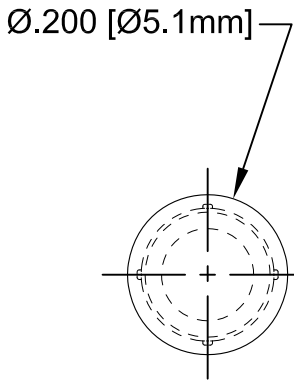


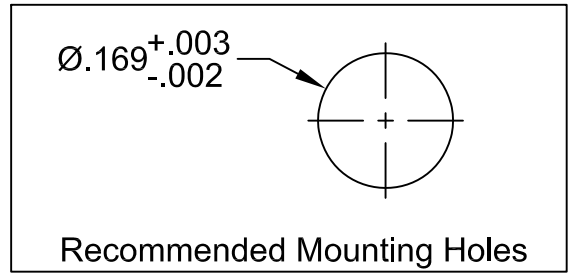
ITEM	Q'TY	PART NUMBER	PART DESCRIPTION
1	1	FLP-LC2	LENS CAP, FLEXIBLE LIGHT-PIPE, 5mm ROUND
2	1	FLPS2031-XX.X	2mm LIGHT PIPE CABLE, CUT LENGTH IN INCHES

REV.	DESCRIPTION	DATE	APPROVED
A	Engineering Release	04/20/12	T. Y.



*Length "XX.XX"	Tolerance
2.50" ~ 16.00"	±0.050"
16.25" ~ 40.00"	±0.15"
40.25" ~ 80.00"	±0.30"
80.25" ~ 500.0"	±0.5%

**EXAMPLE:**  
**PM5-C2031-6.50**  
Series                      Fiber Length in 0.25" Increments



STANDARD TOLERANCE ( UNLESS OTHERWISE SPECIFIED )		 4 THOMAS, IRVINE, CA. 92618 TEL: (949) 951-8808 FAX: (949) 951-3974	
DECIMALS	ANGULAR		
.X      ±.1	X°   ± 1°	<b>TITLE:</b> 5mm Circular Lens Flexible Light Pipe FLPS2031 Indicator <b>PART NO:</b> PM5-C2031-XX.XX <b>REVISION:</b> A <b>CAGE CODE :</b> 32559 <b>SHEET #</b> 1 OF 1 <small>CAD GENERATED DOCUMENT, DO NOT MEASURE DRAWING.</small>	
.XX    ±.02			
.XXX ±.010			
DESIGNED: <b>Ty Yin</b>	DATE: <b>04/20/12</b>		
CHECKED: <b>B. Oliver</b>	DATE: <b>04/20/12</b>		