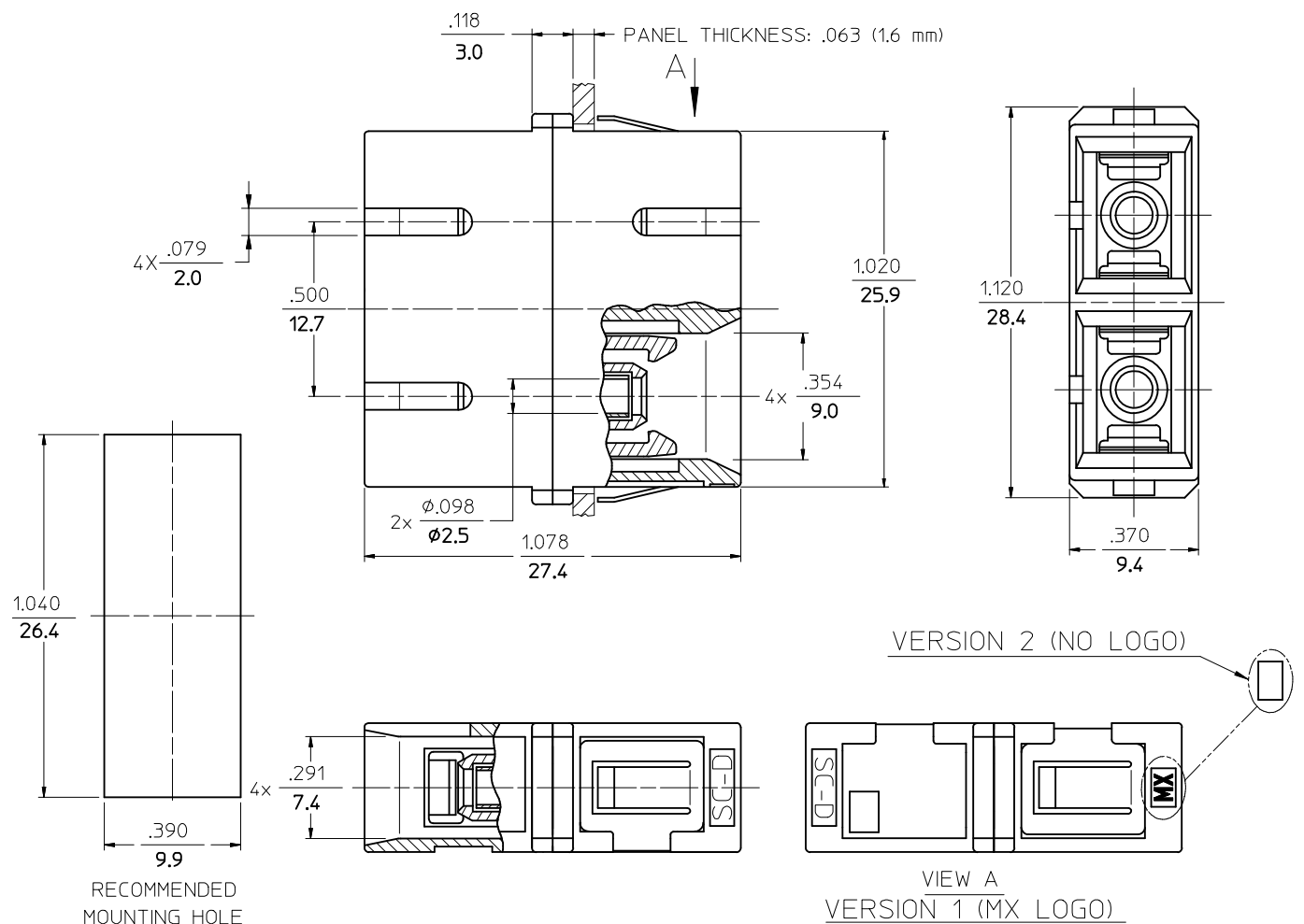


P/N OF ADAPTER	MATERIAL OF SLEEVE	TYPE	COLOR	LOGO
106166-0100	Zr	SINGLE MODE	BLUE	MX
106166-0103	Zr			
106166-0120	Zr			
106167-0100	PHOSPHOR BRONZE	MULTIMODE	BEIGE	
*106167-0185			AQUA	
106166-0110	Zr	MULTIMODE	BLACK	
106167-0110	PHOSPHOR BRONZE			
106167-0180	Zr	SINGLE MODE	RED	
106167-0130	PHOSPHOR BRONZE			
106166-0140	Zr	APC	GREEN	
106167-0140	PHOSPHOR BRONZE			
106166-0150	Zr	SINGLE MODE	BLUE	
*106166-0152			PHOSPHOR BRONZE	
*106166-0191	Zr	SINGLE MODE	BLUE	
106167-0150	PHOSPHOR BRONZE			
*106166-0185	Zr	MULTIMODE	AQUA	
*106166-0190	Zr			
*106167-9110	PHOSPHOR BRONZE	MULTIMODE	BEIGE	
*106167-0190			NONE	
*106167-0200			NONE	



NOTES:
 1. P/NS STARTING WITH THE (*) ARE BULK PACKED IN QUANTITIES OF 100pcs.
 2. DUST CAPS ARE NOT SHOWN BUT INCLUDED.

ENTER DESCRIPTION EC NO: MF2010-0028 DR: WANKPEVNER CHKD: 2009/07/23 APPR: LGUMIN 2009/07/23	QUALITY SYMBOLS	GENERAL TOLERANCES (UNLESS SPECIFIED)	DIMENSION STYLE	SCALE	DESIGN UNITS	THIRD ANGLE PROJECTION
	▽=0 ∇=0	mm INCH 4 PLACES ± --- ± --- 3 PLACES ± --- ± --- 2 PLACES ± --- ± --- 1 PLACE ± --- ± --- ANGULAR ±1/2°	IN/MM	1:1	INCH	
	DRAFT WHERE APPLICABLE MUST REMAIN WITHIN DIMENSIONS	DRAWN BY PGIBLIN DATE 2005/10/07 CHECKED BY DATE APPROVED BY DATE				TITLE DUPLEX ADAPTER (SC-D, FLANGELESS)
		MATERIAL NO. SEE TABLE SIZE B			MOLEX INCORPORATED DOCUMENT NO. SD-10616Y-01Y0	SHEET NO. 1 OF 1