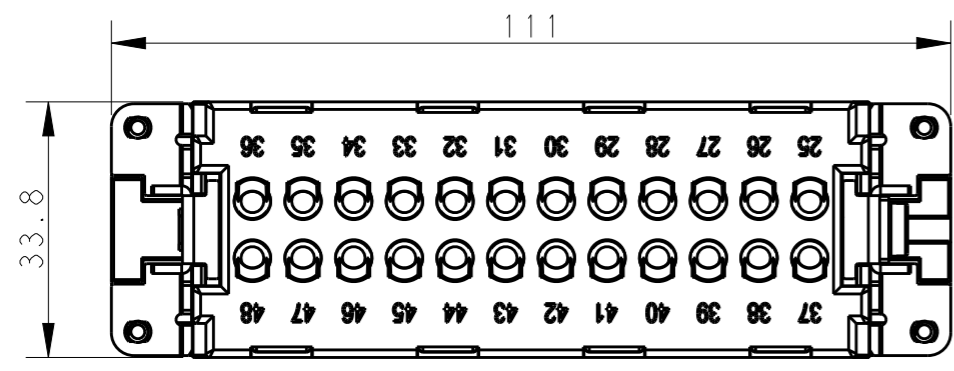
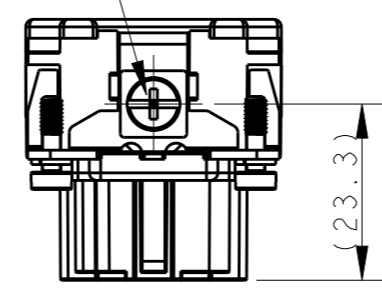
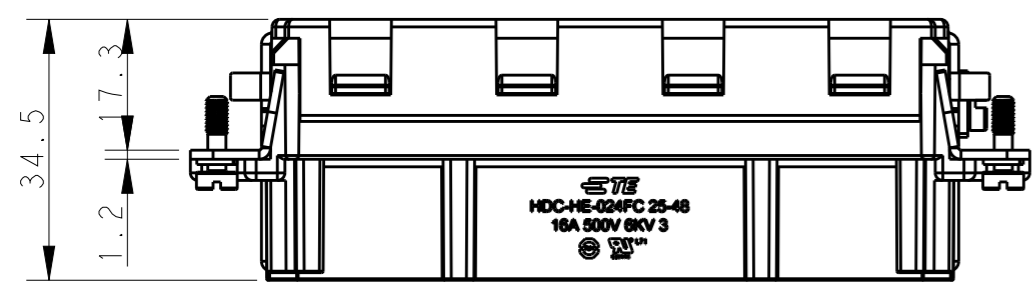


THIS DRAWING IS UNPUBLISHED. RELEASED FOR PUBLICATION 20  
 © COPYRIGHT 20 BY - ALL RIGHTS RESERVED.

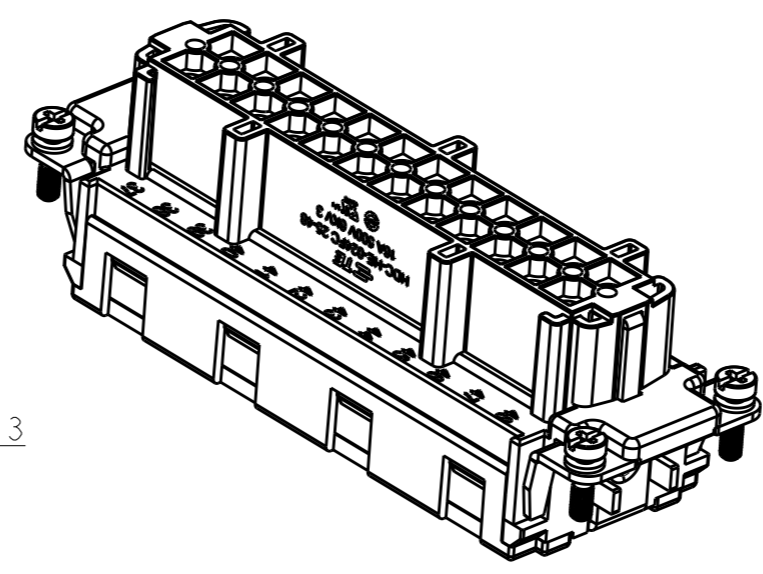
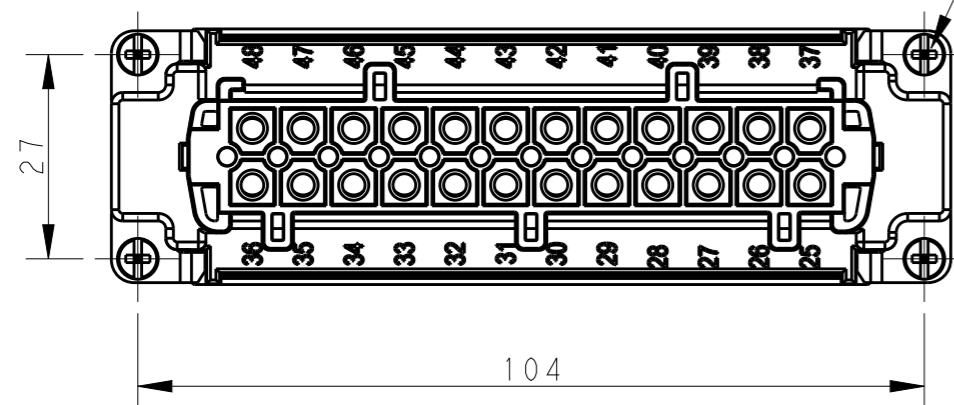
REVISIONS					
P	LTR	DESCRIPTION	DATE	DWN	APVD
	A	INITIAL	07Jan2015	GY	CW
	B	ECR-15-013759	130c+2015	DW	CW



M4 screw, recommended tightening torque 1.2Nm

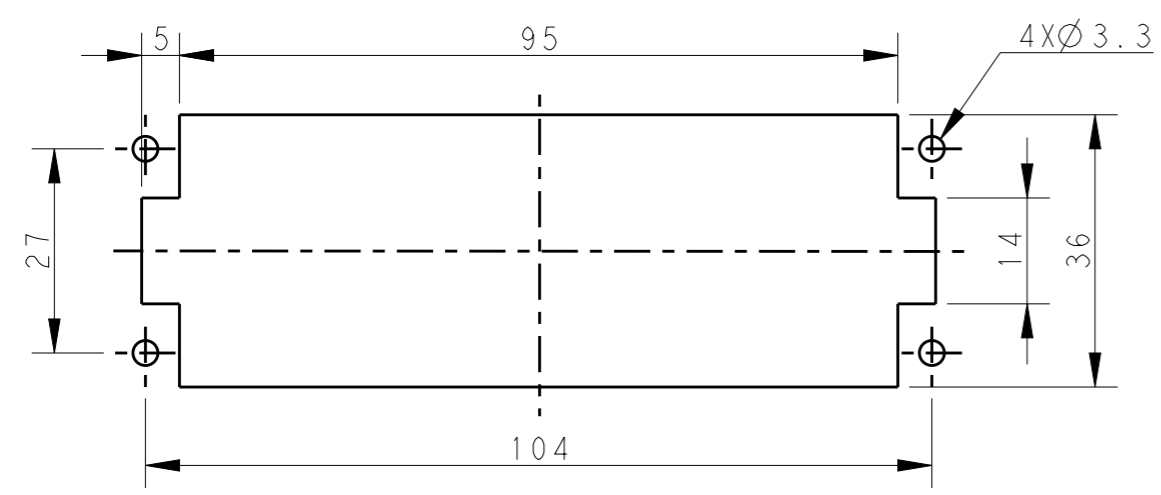


4 X M3 screw, recommended tightening torque 0.5Nm



- NOTES:
- TECHNICAL CHARACTERISTICS:  
 INSULATION MATERIAL: PC  
 RATED VOLTAGE: 500V  
 RATED CURRENT: 16A  
 INSULATION RESISTANCE:  $\geq 400M\Omega$   
 RATED IMPULSE VOLTAGE: 6KV  
 POLLUTION DEGREE: 3  
 FLAMMABILITY: UL94V-0  
 MATING CYCLES: 500 CYCLES  
 OPERATION TEMPERATURE:  $-40^{\circ}C \sim +125^{\circ}C$   
 WIRE RANGE:  $0.14mm^2 \sim 4mm^2$  (AWG26-AWG12)  
 CONTACT TYPE: CRIMP CONTACT
  - CONTACTS NEED TO BE ORDERED SEPARATELY.  
 (ORDER No. REFER TO DRAWING:T20300X20XX000)

- 注释:
- 技术参数:  
 绝缘材料: PC  
 额定电压: 500V  
 额定电流: 16A  
 绝缘电阻:  $\geq 400M\Omega$   
 脉冲电压: 6KV  
 污染等级: 3  
 阻燃等级: UL94V-0  
 插拔次数: 500次  
 工作温度:  $-40^{\circ}C \sim +125^{\circ}C$   
 接线范围:  $0.14mm^2 \sim 4mm^2$  (AWG26-AWG12)  
 接线类型: 冷压接
  - 端子需要单独订购。  
 (订货号参考图面: T20300X20XX000)



Panel cut out for inserts for using without hoods/housings

HE-024-FC 25-48	T2040484201-000
DESCRIPTION	PART NUMBER

THIS DRAWING IS A CONTROLLED DOCUMENT.		DWN	Gino.Yao	05Jan2015	 TE Connectivity	NAME	HE-024-FC 25-48					
DIMENSIONS:		CHK	Chris.Wang	05Jan2015			PRODUCT SPEC	114-137044				
mm		APVD	Xiang.Xu	05Jan2015				APPLICATION SPEC	114-137044			
TOLERANCES UNLESS OTHERWISE SPECIFIED:							WEIGHT		-			
0 PLC ±-					CUSTOMER DRAWING	SCALE	1:1		SHEET	1 OF 1	REV	B
1 PLC ±-					SIZE		A3	CAGE CODE	-	RESTRICTED TO		-
2 PLC ±-					DRAWING NO		T2040484201000					
3 PLC ±-					FINISH		-					
4 PLC ±-					MATERIAL		-					
ANGLES ±-					FINISH		-					