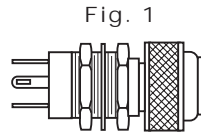
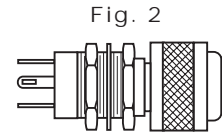


**800 & 801 SERIES FOR 15/32" MOUNTING HOLE**

PART NO.	MIL DESIG.	COLOR FIG.
800-1030-0331-504	MS25041-6	R 1
800-1030-0332-504	MS25041-7	G 1
800-1030-0333-504	MS25041-8	Y 1
801-1030-0331-504	MS25041-2	R 2
801-1030-0332-504	MS25041-3	G 2
801-1030-0333-504	MS25041-4	Y 2



FLAT PRESS-TO-TEST WITH  
NON DIMMING LENS CAP

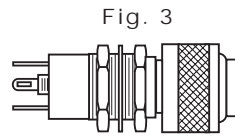


FLAT PRESS-TO-TEST WITH  
DIMMING LENS CAP

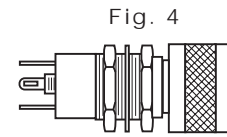
Uses:  
T-1 3/4 MIDGET  
FLANGE BASE  
INCANDESCENT LAMP  
OR BASED LED LAMP

**803 & 804 SERIES FOR 5/8" MOUNTING HOLE**

PART NO.	MIL DESIG.	COLOR FIG.
803-1710-0331-504	MS25331-6	R 3
803-1710-0332-504	MS25331-7	G 3
803-1710-0333-504	MS25331-8	Y 3
804-1710-0331-504	MS25331-2	R 4
804-1710-0332-504	MS25331-3	G 4
804-1710-0333-504	MS25331-4	Y 4



FLAT PRESS-TO-TEST WITH  
NON DIMMING LENS CAP

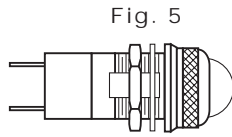


FLAT PRESS-TO-TEST WITH  
DIMMING LENS CAP

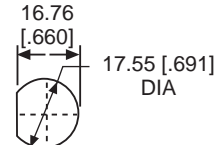
Uses:  
T-3 1/4 MINIATURE  
BAYONET BASE  
INCANDESCENT LAMP

**373, 375 & 376 SERIES FOR 11/16" MOUNTING HOLE • WATERTIGHT**

PART NO.*	MIL DESIG.	COLOR FIG.
373-0410-0131-203	LH76/3, LC14RN3	R 5
375-0410-0131-203	LH76/3, LC17RN3	R 6
376-0410-0131-203	LH76/3, LC18RN3	R 7

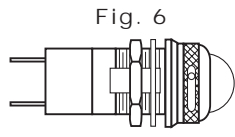


CONVEX, TRANSPARENT  
LENS CAP

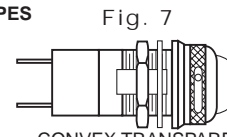


RECOMMENDED  
PANEL CUTOUT

Uses:  
T-3 1/4  
MINIATURE  
BAYONET  
BASE  
INCANDESCENT  
LAMP OR BASED  
LED LAMP



CONVEX TRANSPARENT  
COMPLETE BLACKOUT LENS CAP

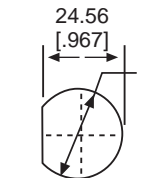


CONVEX TRANSPARENT  
SEMI BLACKOUT LENS CAP

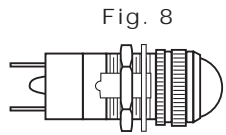
**DIMMER TYPES**

**378, 379, 380 & 381 SERIES FOR 1" MOUNTING HOLE • WATERTIGHT**

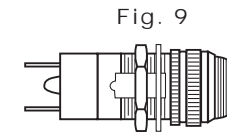
PART NO.*	MIL DESIG.	COLOR FIG.
378-3402-0131-203	LH80/1, LC21RN3	R 8
379-3402-0531-203	LH80/1, LC22RN3	R 9
380-3402-0131-203	LH80/1, LC23RN3	R 10
381-3402-0131-203	LH80/1, LC24RN3	R 11



RECOMMENDED  
PANEL CUTOUT

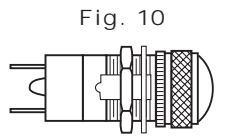


CONVEX TRANSPARENT  
LENS CAP

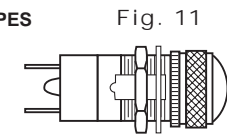


TORPEDO TRANSPARENT  
LENS CAP

Uses:  
S-6 DOUBLE  
CONTACT  
BAYONET BASE  
INCANDESCENT  
LAMP



CONVEX TRANSPARENT  
COMPLETE BLACKOUT LENS CAP



CONVEX TRANSPARENT  
SEMI BLACKOUT LENS CAP

**DIMMER TYPES**

\* Cap and bases ordered separately; for complete military part number listing, please see military index on Pages 32 & 33

Neon and incandescent lamp information on Pages 35 and 36.

Based LED lamp information on Pages 37 through 40.

Dimensions in mm [inches]