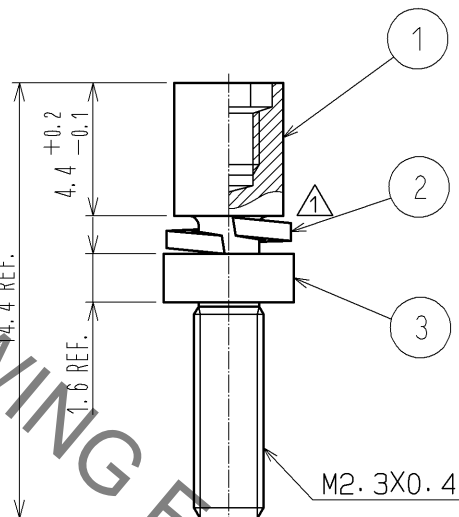
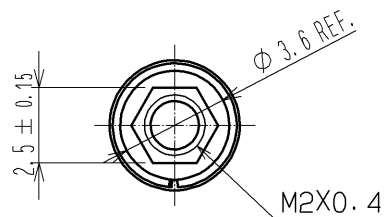
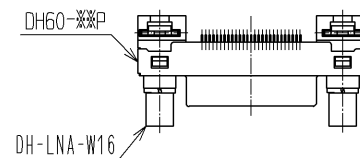


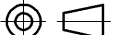


HRS DRAWING FOR REFERENCE



- NOTE 1 THIS PRODUCT IS ASSEMBLED TO A "DH60-\*\*P".  
THIS PRODUCT IS USED WHEN A PANEL ISN'T USED.
- 2 THIS PRODUCT IS PACKED IN A BAG. (QUANTITY IN A BAG : 200 pcs.)

1 ASSEMBLED(1:1)



			3		STEEL		OVER PLATING : NICKEL 5 μm MIN UNDER PLATING : COPPER 1 μm MIN										
1	STEEL		OVER PLATING : NICKEL 5 μm MIN UNDER PLATING : COPPER 1 μm MIN			2	STEEL		OVER PLATING : NICKEL 5 μm MIN UNDER PLATING : COPPER 1 μm MIN								
NO.		MATERIAL		FINISH . REMARKS			NO.		MATERIAL		FINISH . REMARKS						
UNITS mm				SCALE 4 : 1				COUNT 1	DESCRIPTION OF REVISIONS DIS-E-003059			DESIGNED MO. SHIMOYAMA		CHECKED KN. ICHIKAWA		DATE 09. 12. 07	
 HIROSE ELECTRIC CO., LTD.				APPROVED : AO. SUZUKI				09. 04. 27		DRAWING NO.		EDC4-126530-00					
				CHECKED : MO. SHIMOYAMA				09. 04. 24		PART NO.		DH-LNA-W16					
				DESIGNED : TS. ITO				09. 04. 24		CODE NO.		CL244-0005-5-00					
				DRAWN : TS. ITO				09. 04. 24				