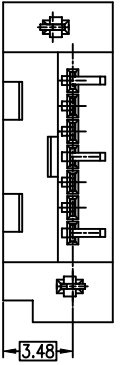
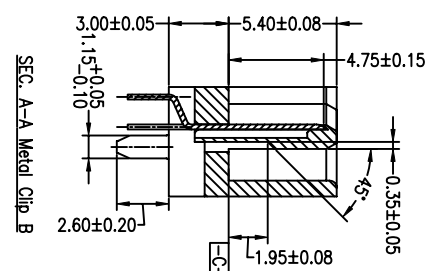
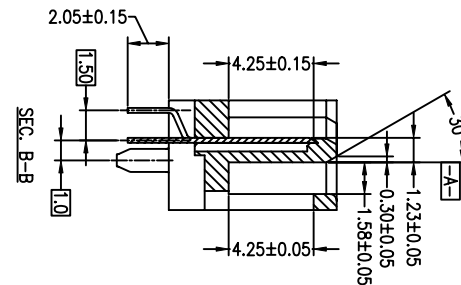
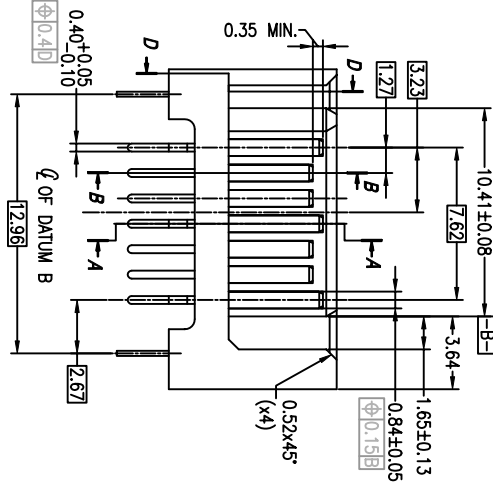
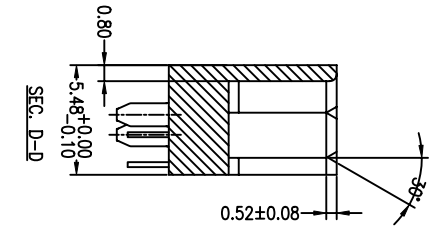
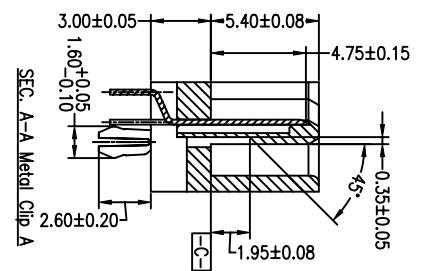
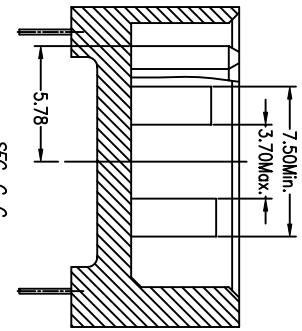
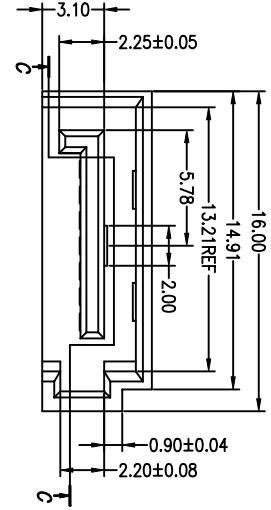




PRODUCT NO.10035690-XXX-3W



1 2

ACAD

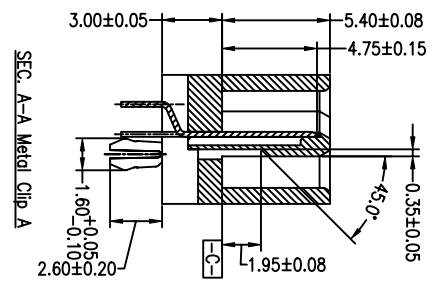
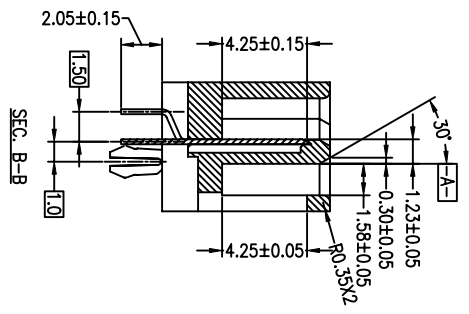
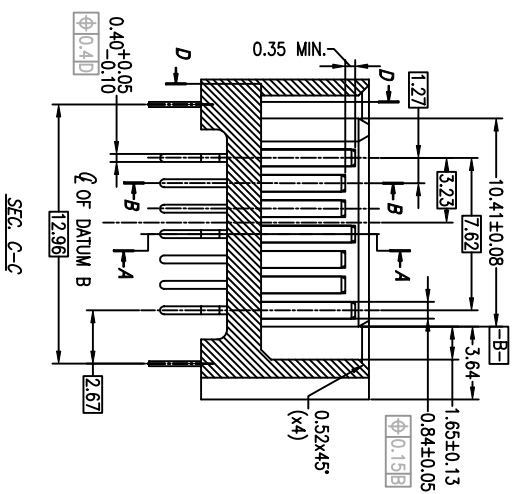
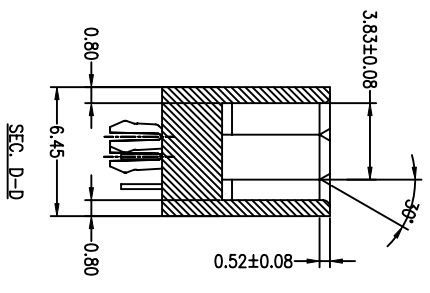
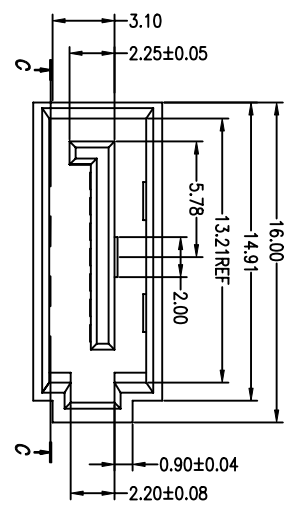
3

4

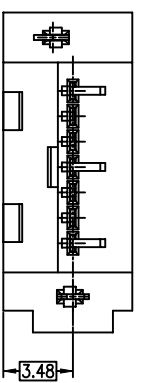
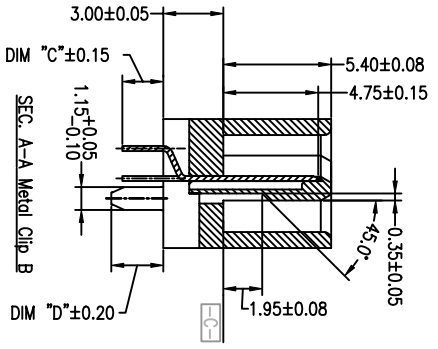
mot'l. code		tolerances unless otherwise specified		CUSTOMER COPY		FCI		title	
lir	ecn no	dr	dtte	.X ± 0.30		projection		S-ATA SIGNAL PLUG	
A	T05-0213	V.L	09/09/05	.XX ± 0.20		MM		DIP VERTICAL TYPE ASS'Y	
B	T08-1033	S.Lin	02/29/08	.XXX ± 0.10		NA		product family	
		angles		0° ± 2°				SATA	
		dr	Wade Liu	09/09/05				size/dwg no	
		engr	Wade Liu	09/09/05				10035690	
		chr	Wade Liu	09/09/05				code	
		oppl	Sterling Lin	09/09/05				TWN	
sheet	revision	sheet	sheet	B	B	B		code	
index	sheet	index	index	1	2	3		1 of	



PRODUCT NO.10035690-XXX-4W



SUFFIX	DIM C	DIM D
OTHERS	2.05MM	2.60MM
-XX4XLF	3.05MM	3.40MM



mot'l. code		tolerances unless otherwise specified		CUSTOMER COPY		FCI	
lir	ecn no	dr	dtte	lineor	projection	title	www.fciconnect.com
A	T05-0213	V/L	09/09/05	.XX ± 0.20	MM	S-ATA SIGNAL PLUG	
B	T08-0033	S/Lin	02/29/08	.XXX ± 0.10	MM	DIP VERTICAL TYPE ASS'Y	
		angles		0° ± 2°			
		dr	09/09/05	Wade Liu			
		engr	09/09/05	Wade Liu			
		chr	09/09/05	Wade Liu			
		oppl	09/09/05	Stirling Lin			
sheet index	revision	sheet	1	2	3		

1 | 2

1 | 2

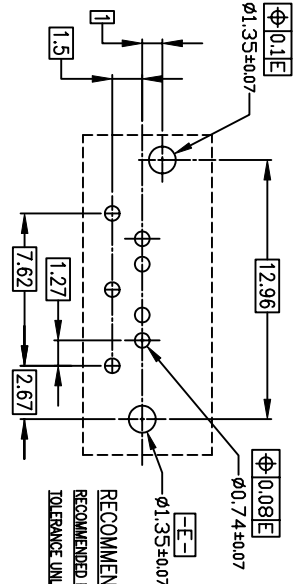
3 |

4

ACAD

3 |

4



RECOMMENDED MOUNTING LAYOUT  
RECOMMENDED PCB I = 1.60mm  
TOLERANCE UNLESS OTHERWISE±0.1

- 10035690-X X X X X X X X X X
- BLANK: Plating Tin/Lead
  - LF: Plating Lead Free
  - 3W: 3 Wall
  - 4W: 4 Wall
  - 2: Metal clip A WITH 2.05 MM TAIL
  - 3: Metal clip B WITH 2.05 MM TAIL
  - 4: Metal clip B WITH 3.05 MM TAIL (4W ONLY)
- Au thickness of contact point  
0: 15u" min  
2: 3u" min  
Housing Color  
0: Black

- NOTES :
1. MATERIAL
    - i) HOUSING : HIGH TEMPERATURE THERMOPLASTIC UL94V-0
    - ii) TERMINAL : COPPER ALLOY
    - iii) HOLD DOWN : COPPER ALLOY
  2. FINISH
    - i) TERMINAL : Au PLATING AT CONTACT POINT  
100u" min Sn-Pb or PURE TIN PLATING AT SOLDER TAIL WITH NICKEL UNDERPLATE
    - ii) HOLD DOWN : 100-200 u" Sn-Pb or PURE TIN PLATING.
  3. P/N : 10035690-XXXXLF  
THE HOUSING WILL WITHSTAND EXPOSURE TO 260 DEGREE C PEAK TEMPERATURE FOR 10 SECONDS IN A WAVE SOLDER APPLICATION WITH 1.6MM MINIMUM THICK CIRCUIT BOARD.
  4. Packaging spec: GS-14-840.
  5. Product Spec: GS-12-194.

mot'l. code		tolerances unless otherwise specified		CUSTOMER COPY		FCI		title		product family		code	
ltr	ecn no	dr	date	linear	projection	MM	www.fciconnect.com	S-ATA SIGNAL PLUG	SATA	TWIN	code		
A	T05-0213	V.L	09/09/05	.XX ± 0.20	MM	→		DIP VERTICAL TYPE ASS'Y			sheet		
B	T08-1033	S.Lin	02/29/08	.XXX ± 0.10	MM	←					3 of		
		angles		0° ± 2°									
		dr		Wade Liu									
		enfr		Wade Liu									
		chr		Wade Liu									
		oppl		Sterling Lin									
sheet	revision	B	B	B	scale	NA							
index	sheet	1	2	3									

ACAD

3

4