

## Features

- Low Loss
- High Return Loss
- High Rejection

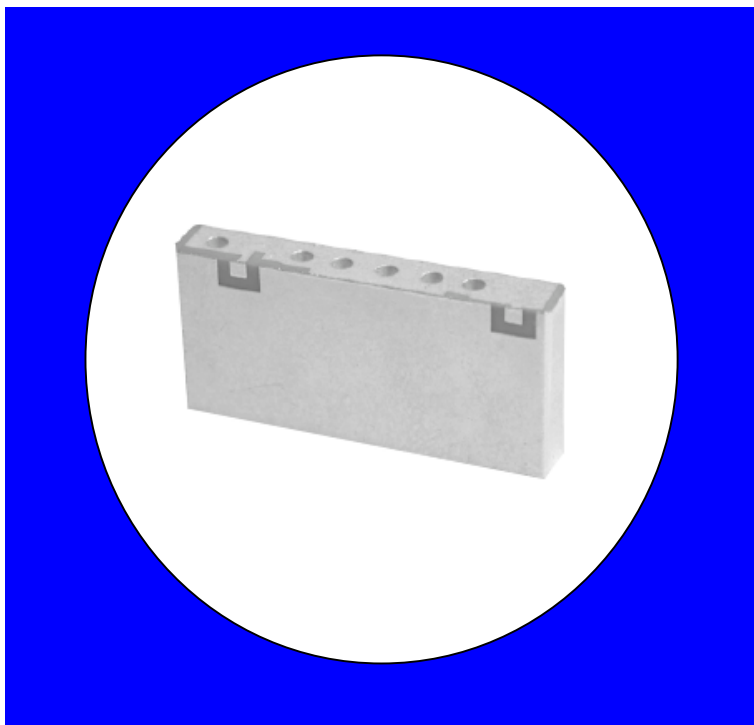
## Description

Surface mount, silver (Ag) coated ceramic filter. Developed for use in 800 MHz infrastructure applications.

Weight: 7.4 grams typical

Material: Filter is composed of a ceramic block plated with Ag.

Filter complies with RoHS standards.



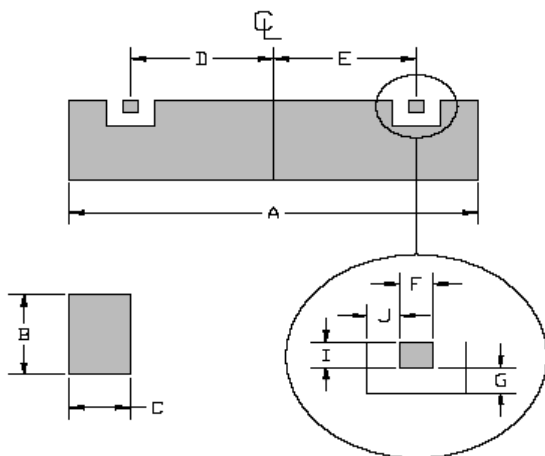
## Electrical Specifications

Parameter	Frequency (MHz)	Typical @ 25°C	Spec. @ 25°C
Passband Insertion Loss	804-824	2.5 dB	2.7 dB max
Passband Return Loss	804-824	15.3 dB	11.0 dB min
Attenuation	850-870	53.0 dB	44.0 dB min

Note: Supplier shall test each filter to the critical electrical specifications of the above table. Any subsequent audits may deviate from in value due to measurement repeatability among different test systems. Such deviations shall not exceed the following limits:

Specification Allowance	
Insertion Loss	0.1 dB
Return Loss	1.0 dB
Stopbands	1.0 dB

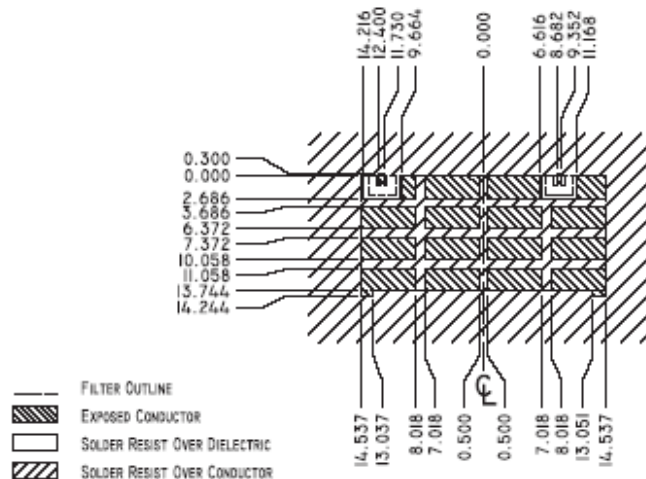
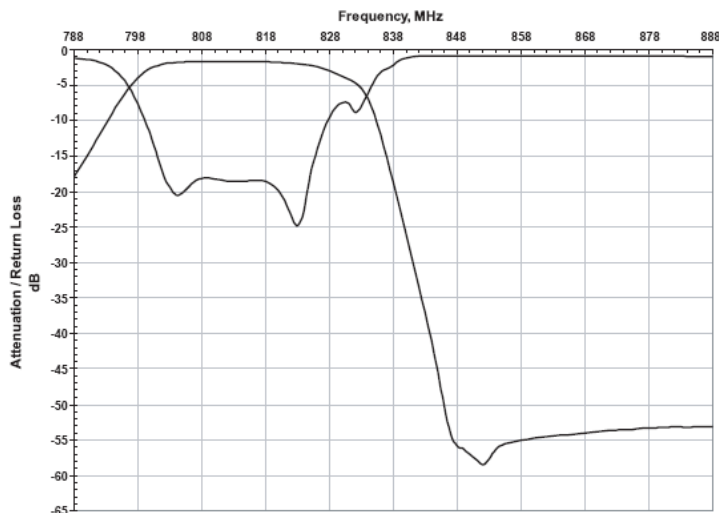
## Mechanical Drawing



Dim	Nominal (mm)	Tolerance (mm) +/- or max
A	29.399	max
B	13.995	max
C	4.496	max
D	9.017	0.127
E	12.065	0.127
F	1.27	0.127
G	1.016	0.127
I	1.27	0.127
J	1.016	0.127

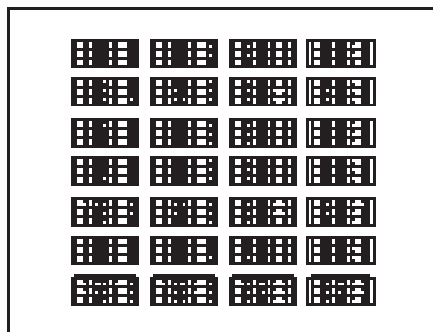
## Electrical response

## PCB Layout



## Packaging and Marking

This product is shipped in pre-formed foamed trays.



10 28 Slot Foam Trays (3 Per Slot)

(840 max. per box)