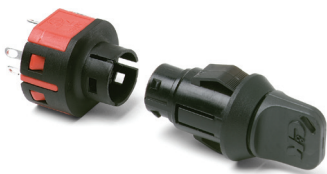


# PF Series 5 Tumbler Miniature Snap-in Switchlocks



## Features/Benefits

- Snap-in mounting
- Multi-pole and multi-position
- Positive detent

## Typical Applications

- Computers
- Point-of-sale terminals
- Instrumentation



Models Available

## Specifications

CONTACT RATING: Q contact material: 4 AMPS @ 125 V AC or 28 V DC; 2 AMPS @ 250 V AC (UL/CSA). See page L-25 for additional ratings.

ELECTRICAL LIFE: 10,000 make-and-break cycles at full load.

CONTACT RESISTANCE: Below 10 m  $\Omega$  typ. initial @ 2-4 V DC, 100 mA, for both silver and gold plated contacts.

INSULATION RESISTANCE: 10<sup>9</sup>  $\Omega$  min.

DIELECTRIC STRENGTH: 1,000 Vrms min. @ sea level.

INDEXING: 45°: 3 positions, 90°:2 positions.

## Materials

LOCK: 6/6 nylon with matte finish (UL 94V-2), black,

5 tumbler, single bitted lock with integral detent mechanism.

KEYS: Two nickel plated brass keys with black plastic head.

SWITCH HOUSING: 6/6 nylon (UL 94V-2).

CONTACTS & TERMINALS: Q contact material: Copper, silver plated. See page L-25 for additional contact materials.

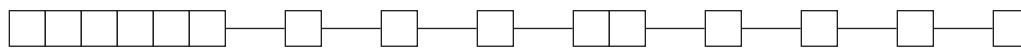
TERMINAL SEAL: Epoxy.

**NOTE:** Any models supplied with Q or B contact material are RoHS compliant.

**NOTE:** Specifications and materials listed above are for switchlocks with standard options. For information on specific and custom switchlocks, consult Customer Service Center.

## Build-A-Switch

To order, simply select desired option from each category and place in the appropriate box. Available options are shown and described on pages L-23 through L-25. For additional options not shown in catalog, consult Customer Service Center.



### Switch and lock Function

- PF011U** SP, 90° Index, keypull pos. 1 & 2
- PF201U** DP, 45° Index, keypull pos. 1 & 3
- PF211U** DP, 90° Index, keypull pos. 1 & 2

### Keying

- E** Two nickel plated brass keys with insert molded plastic head

### Lock Type

- B** 5 Tumbler lock with detent

### Lock Finish

- M** Plastic lock with matte finish

### Terminations

- 03** Solder lug with hole
- WC** Wire lead

### Lock Style

- K** Cone shaped facing

### Contact Material

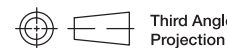
- Q** Silver
- B** Gold

### Lock Color

- 2** Black

### Key Color

- 2** Black



Dimensions are shown: Inch (mm)

Specifications and dimensions subject to change



Switchlock

# PF Series 5 Tumbler Miniature Snap-in Switchlocks

## SWITCH AND LOCK FUNCTION



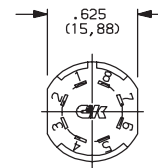
SINGLE & DOUBLE POLE SWITCHES							
NO. POLES	MODEL NO.	CONNECTED TERMINALS			KEY PULL POSITIONS	LOCK CONFIGURATION	INDEXING
		POS. 1	POS. 2	POS. 3			
DP	<b>PF201U</b>	8-1, 4-5	1-2, 5-6	2-3, 6-7	Positions 1 & 3		45°
SP DP	<b>PF011U</b> <b>PF211U</b>	8-1 8-1, 4-5	1-3 1-3, 5-7		Positions 1 & 2		90°

All models with all options when ordered with 'Q' contact material.

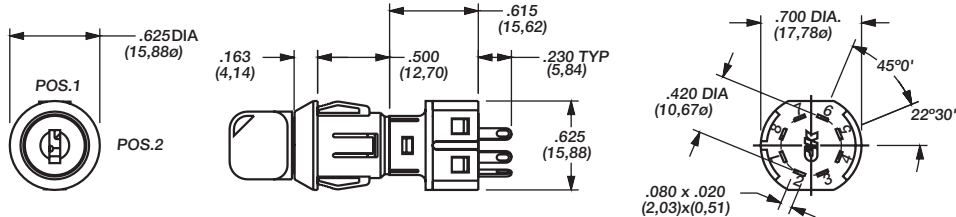
### LEGEND

- = Detent Positions (45° or 90°)
- ⊙ = Key pull possible in these positions.
- ⊙ = Stop Positions

### TERMINAL NUMBERS

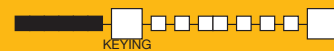


Terminal numbers molded on housing.



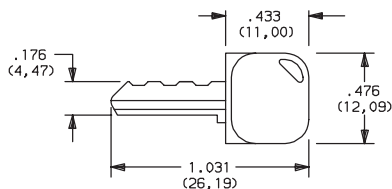
Part number shown: PF011UEBM03KQ22

## KEYING



KEY COLOR

**E** TWO NICKEL PLATED BRASS KEYS WITH INSERT MOLDED PLASTIC HEAD



Key part number: 617D1004102

OPTION CODE	KEY COLOR
<b>2</b>	BLACK

**NOTE:** All orders keyed alike, standard. For more than one key code, replacement keys, or other special features, consult Customer Service Center.

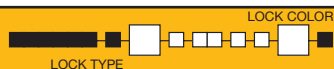


Third Angle Projection

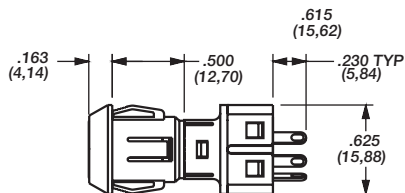
Dimensions are shown: Inch (mm)  
Specifications and dimensions subject to change

# PF Series 5 Tumbler Miniature Snap-in Switchlocks

## LOCK TYPE



**B** 5 TUMBLER LOCK WITH DETENT



OPTION CODE	LOCK COLOR
<b>2</b>	BLACK

## LOCK FINISH



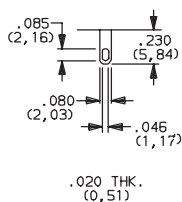
**M** PLASTIC LOCK WITH MATTE FINISH



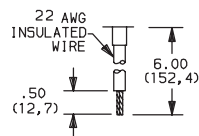
## TERMINATIONS



**03** SOLDER LUG WITH HOLE



**WC** WIRE LEAD

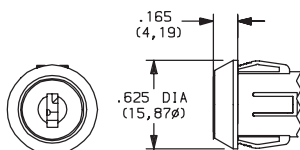


Black wire standard, other colors and lengths available, consult Customer Service Center. UL style 1015.

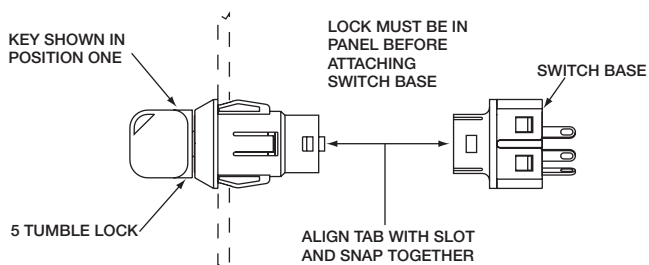
## LOCK STYLE



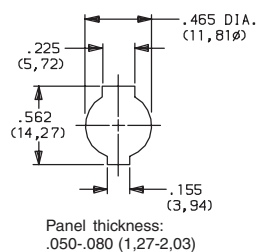
**K** CONE SHAPED FACING



### Switch and Lock Assembly Instructions



### PANEL MOUNTING



**NOTE:** Switch installation is permanent. Switch cannot be removed from lock after assembly. Attempts to separate switch and lock may damage switch.



Dimensions are shown: Inch (mm)  
Specifications and dimensions subject to change



Switchlock



# PF Series 5 Tumbler Miniature Snap-in Switchlocks


## CONTACT MATERIAL

OPTION CODE	RoHS COMPLIANT*	RoHS COMPATIBLE*	CONTACT AND TERMINAL MATERIAL	RATING	
<b>Q</b>	YES	YES	SILVER <sup>2</sup>	POWER	4 AMPS @ 125 V AC or 28 V DC; 2 AMPS @ 250 V AC (UL/CSA).
<b>B</b>	YES	YES	GOLD <sup>1</sup>	LOW LEVEL/DRY CIRCUIT	0.4 VA MAX. @ 20 V AC or DC MAX.

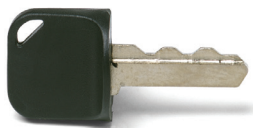
\* Note: See Technical Data section of this catalog for RoHS compliant and compatible definitions and specifications.

<sup>1</sup> CONTACTS & TERMINALS: Copper, with gold plate over nickel plate.

<sup>2</sup> CONTACTS & TERMINALS: Copper, silver plated (standard with all termination options).

All models  with all options when ordered with 'Q' contact material.

## AVAILABLE HARDWARE



Key Code: 041

**PART NO. (ONE KEY)**

**617D1004102** BLACK

**Material:** Brass  
Finish: Nickel plate  
6/6 Nylon insert molded head



Switchlock



Third Angle Projection

Dimensions are shown: Inch (mm)  
Specifications and dimensions subject to change