

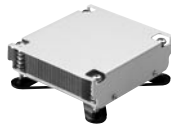
CPU Coolers

Intel LGA1156



| Model Name | 1960047669N001 | 1960047670N001 | 1960047831N001 |
|------------------------------|--|--|---|
| Thermal Dispatch performance | Intel LAG1156 95W | Intel LGA1156 95W | LGA1156 95W |
| Fan | 8 cm/57.5 CFM 4500+/- 10% RPM | 8 cm/57.5 CFM 4500+/- 10% RPM | 7 cm/ 35.5CFM 5400+/- 10% RPM |
| Heatsink Material | Aluminum & Cooler heart | Aluminum & Cooper | Cooper |
| Heatsink Dimensions | 90 x 90 x 35 mm (3.54" x 3.54" x 1.38") | 90 x 90 x 35 mm (3.54" x 3.54" x 1.38") | 83 x 83 x 39.26 mm (3.27" x 3.27" x 1.54") |
| Dimensions | 120 x 120 x 77 mm (4.72" x 4.72" x 3.03") | 120 x 120 x 77 mm (4.72" x 4.72" x 3.03") | 83 x 83 x 55.73mm (3.27" x 3.27" x 2.17") |
| Weight | 500g | 500g | 582g |
| Minimum Chassis Height | 4U | 4U | 2U |
| Recommended Chassis | Motherboard version of chassis | mini-ITX Motherboard version of chassis | Backplane version of chassis |
| Supported Boards | AIMB-580/AIMB-780 | AIMB-280 | PCE-5125 |

Intel Pentium 4 LGA 775



| Model Name | 1960013266T000 | 1750000332 | 1750001661 | 1960022033T000 | 1750000334 |
|------------------------------|--|---|--|--|---|
| Thermal Dispatch Performance | Pentium 4: Up to 3.4 GHz (90 nm, 84 W, L2: 1 MB) Core 2 Duo: Up to 3.33 GHz (65 nm, 65 W, L2: 4 MB) | Pentium 4: Up to 3.8 GHz (90 nm, 115 W, L2: 1 MB) Core 2 Duo: Up to 3.33 GHz (65 nm, 65 W, L2: 4 MB) Core 2 Quad: Up to 3 GHz (45 nm, 95 W, L2: 12 MB) | Pentium 4: Up to 3.4 GHz (90 nm, 84 W, L2: 1 MB) Core 2 Duo: Up to 3.33 GHz (65 nm, 65 W, L2: 4 MB) Core 2 Quad: Up to 3 GHz (45 nm, 95 W, L2: 12 MB) | Pentium 4: Up to 3.4 GHz (90 nm, 84 W, L2: 1 MB) Core 2 Duo: Up to 3.33 GHz (65 nm, 65 W, L2: 4 MB) Core 2 Quad: Up to 3 GHz (45 nm, 95 W, L2: 12 MB) | Pentium 4: Up to 3.8 GHz (90 nm, 115 W, L2: 1 MB) Core 2 Duo: Up to 3.33 GHz (65 nm, 65 W, L2: 4 MB) |
| Fan | - | 7 cm / 35.5 CFM 5,400 ± 10% RPM | 7 cm / 35.5 CFM 5,400 ± 10% RPM | 8 cm / 50.3 CFM 4,800 ± 10% RPM | 8 cm / 57.7 CFM 4,500 ± 10% RPM |
| Heatsink Material | Copper | Copper | Copper | Aluminum fins & copper heart | Aluminum fins & copper heart |
| Heatsink Dimensions | 80 x 80 x 27 mm (3.15" x 3.15" x 1.06") | 83 x 83 x 15 ~ 39 mm (3.27" x 3.27" x 0.59" ~ 1.54") | 80 x 80 x 27 mm (3.15" x 3.15" x 1.06") | 89 x 89 x 26.5 mm (3.5" x 3.5" x 1.04") | 90 x 90 x 32 mm (3.54" x 3.54" x 1.26") |
| Dimensions | 90 x 82.4 x 26 mm (3.54" x 3.24" x 1.02") | 83 x 83 x 55 mm (3.27" x 3.27" x 2.17") | 98 x 92 x 44 mm (3.86" x 3.62" x 1.73") | 110 x 110 x 56 mm (4.3" x 4.3" x 2.2") | 110 x 110 x 67 mm (4.33" x 4.33" x 2.64") |
| Weight | 554 g | 560 g | 555 g | 414 g | 550 g |
| Minimum Chassis Height | 1U | 2U | 2U | 2U | 4U |
| Recommended Chassis | ACP-1320 series | Backplane version of chassis | Motherboard version of chassis | Motherboard version of chassis | Motherboard version of chassis |
| Supported Boards | AIMB-766/764/762 | PCA-6194/6190/6010, PCE-5124 | AIMB-256/566/564/562/ 766/764/762 | AIMB-256/566/564/562/ 766/764/763/762 | AIMB-256/566/564/562/ 766/764/763/762 |

CPU Coolers

Intel Pentium 4 Socket 478



| Model Name | 175000242 | 175000432 | 175000257 | 1750002120 |
|-------------------------------------|---|---|--|--|
| Thermal Dispatch Performance | Up to 2.5 GHz (0.13 micro, 61 W, L2: 512 KB) | Up to 2.8 GHz (0.13 micro, 61 W, L2: 512 KB) | Up to 3.4 GHz (90 nm, 89 W, L2: 1 MB) | Up to 3.4 GHz (90 nm, 89 W, L2: 1 MB) |
| Fan | 6 cm / 19.4 CFM 3,800 ± 10% RPM | 6 cm / 5.2 CFM 4,800 ± 10% RPM | 7 cm / 28.9 CFM 4,500 ± 10% RPM | 7 cm / 33.8 CFM 4,300 ± 10% RPM |
| Heatsink Material | Copper | Copper | Copper | Aluminum |
| Dimensions | 88.5 x 62 x 30 mm (3.48" x 2.44" x 1.18") | 93 x 77 x 27 mm (3.66" x 3.03" x 1.06") | 83 x 69 x 55.5 mm (3.27" x 2.72" x 2.19") | 89 x 73 x 55 mm (3.50" x 2.87" x 2.17") |
| Weight | 335 g | 478 g | 565 g | 342 g |
| Minimum Chassis Height | 1U | 1U | 2U | 2U |
| Supported Boards | PCA-6186/6187, AIMB-742/744 | PCA-6186/6187, AIMB-742/744 | PCA-6186/6187, AIMB-742/744 | PCA-6186/6187, AIMB-742/744 |

Intel Xeon



| Model Name | 1960045710S000 | 1750001660 | 1750000282 |
|-------------------------------------|--|---|---|
| Thermal Dispatch Performance | Intel Xeon LV Up to 40W | Intel Xeon LV: Up to 2.8 GHz (90 nm, 55 W, L2: 1 MB) | Intel Xeon: Up to 3.6 GHz (90 nm, 110 W, L2: 1 MB) |
| Fan | - | 6 cm / 24.9 CFM 5,400 ± 10% RPM | 6 cm / 34.5 CFM 6,800 ± 10% RPM |
| Heatsink Material | Copper | Copper | Copper |
| Dimensions | 80 x 58 x 23.5 mm (3.15" x 2.28" x 0.93") | 82 x 58 x 53.3 mm (3.23" x 2.28" x 2.10") | 82 x 58 x 65.5 mm (3.23" x 2.28" x 2.58") |
| Weight | 410g | 614 g | 624 g |
| Minimum Chassis Height | 1U | 2U | 4U |
| Supported Boards | PCE-72xx series | PCE-72xx series | PCE-72xx series |
| Remarks | Only for Xeon LV CPU | Only for Xeon LV CPU | - |

Special CPU Coolers



| Model Name | 1750000400 | 1960021193T000 |
|-------------------------------------|--|---|
| Thermal Dispatch Performance | Pentium 4: Up to 3.8 GHz (90 nm, 115 W, L2: 1 MB) | Pentium 4: Up to 3.4 GHz (90 nm, 84 W, L2: 1 MB) Core 2 Duo: Up to 3.3 GHz (65 nm, 65 W, L2: 4 MB) |
| Fan Speed | 7 cm / 35.5 CFM 5,400 ± 10% RPM | 7 cm / 35.5 CFM 5400 ± 10% RPM |
| Heatsink Material | Copper | Aluminum fins & copper base |
| Dimensions | 89 x 74 x 51 mm (3.50" x 2.91" x 2.01") | 89 x 74 x 40 mm (3.5" x 2.91" x 1.57") |
| Weight | 672 g | 410 g |
| Minimum Chassis Height | 2U | 2U |
| Supported Boards | Only for PCE-5120/5020 | Only for PCE-5120/5020 |
| Remarks | - | - |