

Customer Information Sheet

DRAWING No.: D01-979XXXX

SHEET 2 OF 2

IF IN DOUBT - ASK

©

NOT TO SCALE

THIRD ANGLE PROJECTION

ALL DIMENSIONS IN mm

SPECIFICATIONS:

MATERIAL

CARRIER = BRASS
 CONTACT SHELL = BRASS
 CONTACT CLIP = BERYLLIUM COPPER

FINISH:

01 = 0.1μ GOLD CLIP, 4μ TIN SHELL
 05 = 0.1μ GOLD CLIP 0.13μ GOLD SHELL

ELECTRICAL:

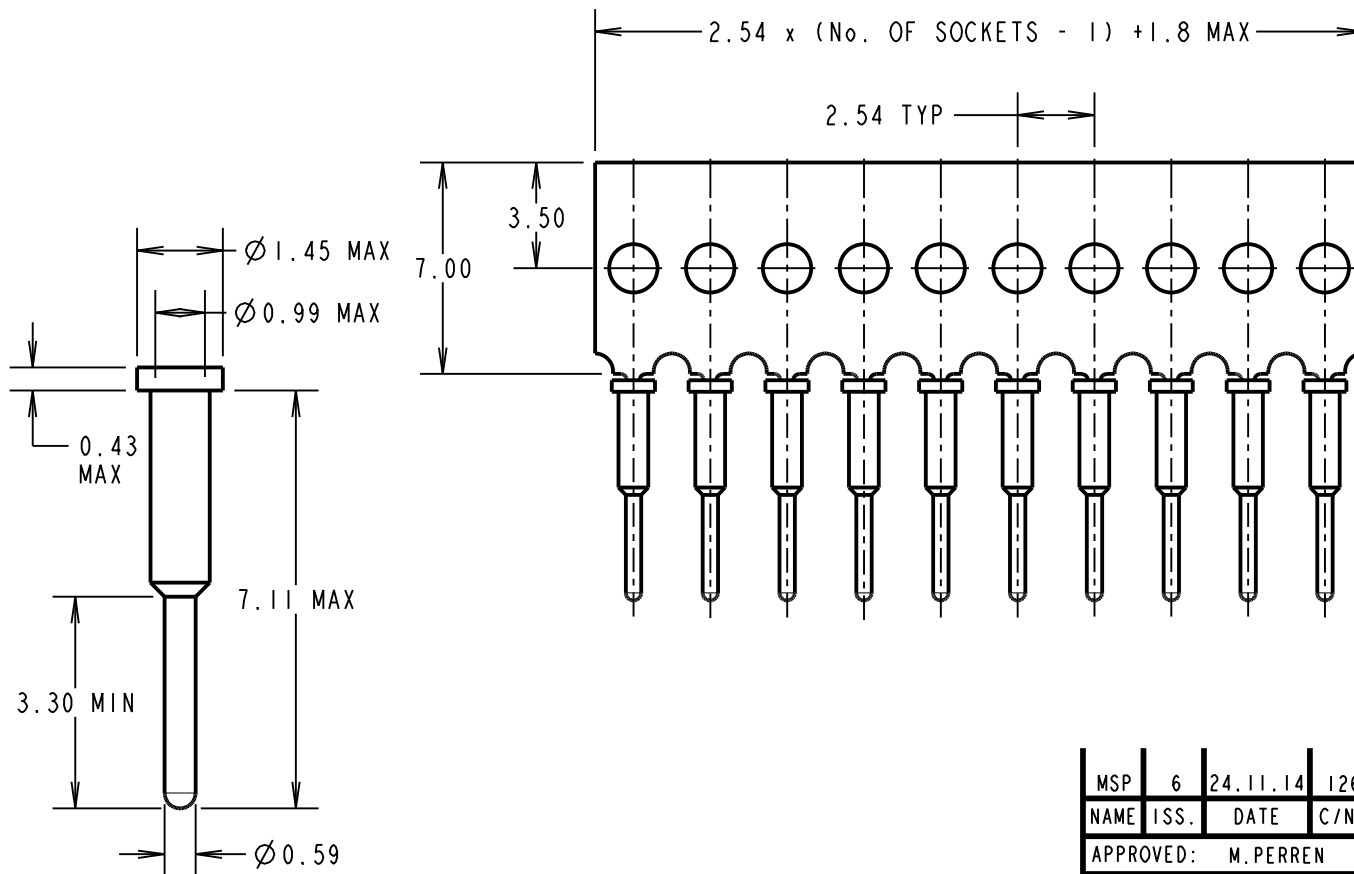
CURRENT RATING = 2 AMPS MAX
 CONTACT RESISTANCE = 25mΩ MAX

MECHANICAL:

DURABILITY = 01, 05 = 500 CYCLES
 INSERTION FORCE = 6N MAX, 2N MIN
 WITHDRAWAL FORCE = 1.5 MAX 0.5 MIN

ENVIRONMENTAL:

OPERATING TEMPERATURE = -55°C TO +100°C
 FOR COMPLETE SPECIFICATION, SEE COMPONENT SPECIFICATION C006 (LATEST ISSUE)



ORDER CODE:

D01-979XXXX

No. OF SOCKETS _____

04 TO 32

FINISH: _____

01 = GOLD CLIP, TIN SHELL
 05 = GOLD CLIP, GOLD SHELL

NOTES:

1. RECOMMENDED HOLE SIZE = Ø1.00-1.10mm
2. MAXIMUM PIN LENGTH = 3.15mm
3. RECOMMENDED PIN DIAMETER = Ø0.41-0.51mm
4. MAXIMUM CONTACT DEPTH = 2.26mm

MSP	6	24.11.14	12677
NAME	ISS.	DATE	C/NOTE
APPROVED:		M. PERREN	
CHECKED:		M. PLESTED	
DRAWN:		M. PERREN	
CUSTOMER REF.:			
ASSEMBLY DRG:			

HARWIN

www.harwin.com
 technical@harwin.com

THIS DRAWING AND ANY INFORMATION OR DESCRIPTIVE MATTER SET OUT HEREON ARE CONFIDENTIAL AND COPYRIGHT PROPERTY OF THE HARWIN GROUP AND MUST NOT BE DISCLOSED, LOANED, COPIED OR USED FOR MANUFACTURING, TENDERING OR FOR ANY OTHER PURPOSE WITHOUT THEIR WRITTEN PERMISSION.

TOLERANCES
 X. = ±1mm
 X.X = ±0.25mm
 X.XX = ±0.10mm
 X.XXX = ±0.01mm
ANGLES = ±5°
 UNLESS STATED

MATERIAL:
 SEE ABOVE
FINISH: SEE ABOVE
S/AREA: mm²

TITLE:
 H3192-XX SUB-MIN SOCKETS ON CARRIER STRIP
DRAWING NUMBER:
D01-979XXXX

SHT 2 OF 2