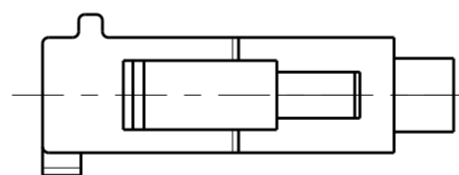
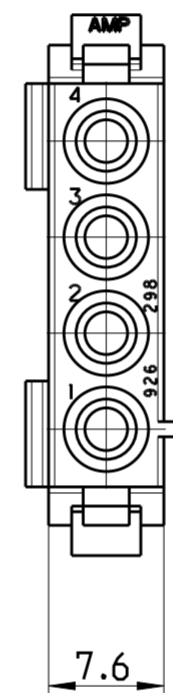
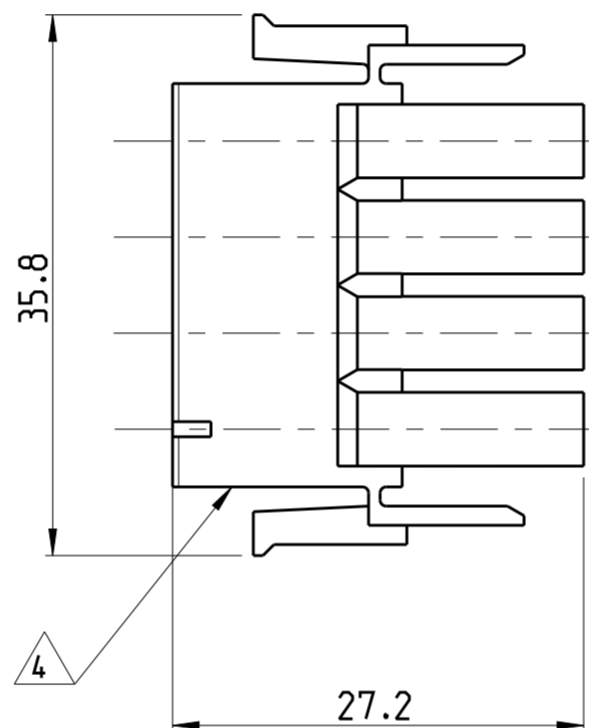
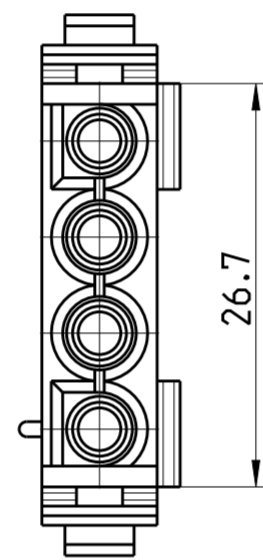


THIS DRAWING IS UNPUBLISHED. RELEASED FOR PUBLICATION 20
 © COPYRIGHT 20 BY - ALL RIGHTS RESERVED.

LOC	DIST	REVISIONS					
		P	LTR	DESCRIPTION	DATE	DWN	APVD
		F7		REVISED PER ECR-17-014951	16OCT2017	BDA	KR



- 1 NEUES MATERIAL (PHOSPHOR UND HALOGEN FREI)
- 2 MATERIAL CORRESPONDING TO THE REQUIREMENT OF IEC60335-1 (INCL. GWT 750 °C WITHOUT FLAME)
- 3 COLOR OF HOUSINGS MAY RANGE FROM CLEAR TO GREEN OR YELLOW DUE TO HYGROSCOPIC NATURE OF RESIN.HOWEVER IT DOESN'T AFFECT THE FORM, FIT AND FUNCTION OF THE PRODUCT.
- 4 CSA CERTIFICATION LOGO LOCATED AT LEAST ONE SIDE OF THE HOUSING APPROXIMATELY AS SHOWN.
- 5 DIMENSIONS SHOWN REPRESENT PRODUCT IN DRY, AS MOLDED, CONDITION. ADDITIONAL 2% GROWTH DUE TO SUBSEQUENT MOISTURE ABSORPTION MAY OCCUR AND SHOULD BE ACCOUNTED FOR.

926298-7	PA66 UL94 V-0 NATURAL	2
926298-6	PA6.6 UL94 V2 NATURAL	2
926298-5	PA 6.6 UL94 V2 NATURAL	
926298-4	PA6.6 UL94 V-0 weiß	
926298-3	PA6.6 UL94 V-0 NATURAL	
926298-2	PA6.6 UL94 V-0 SCHWARZ	1
926298-1	PA66 UL94 V-2 NATURAL	3

PART NUMBER MATERIAL

THIS DRAWING IS A CONTROLLED DOCUMENT.		DWN	10FEB2014	 TE Connectivity	NAME			RESTRICTED TO	
DIMENSIONS:		CHK	10FEB2014		UNIVERSAL MATE-N-LOK				-
mm		APVD	10FEB2014		4 WAY PLUG				
TOLERANCES UNLESS OTHERWISE SPECIFIED:		RRP	10FEB2014		SIZE	CAGE CODE	DRAWING NO		-
0 PLC	±	PRODUCT SPEC		A2	-	926298	-		
1 PLC	±0.2	108-1031		SCALE		2:1	SHEET		
2 PLC	±	APPLICATION SPEC		114-18011		1	OF		
3 PLC	±	WEIGHT		CUSTOMER DRAWING		1	1		
4 PLC	±	REVISION		REV		F7			
ANGLES	±	MATERIAL		REFER TABLE					
FINISH	-	MATERIAL		REFER TABLE					
	-	MATERIAL		REFER TABLE					