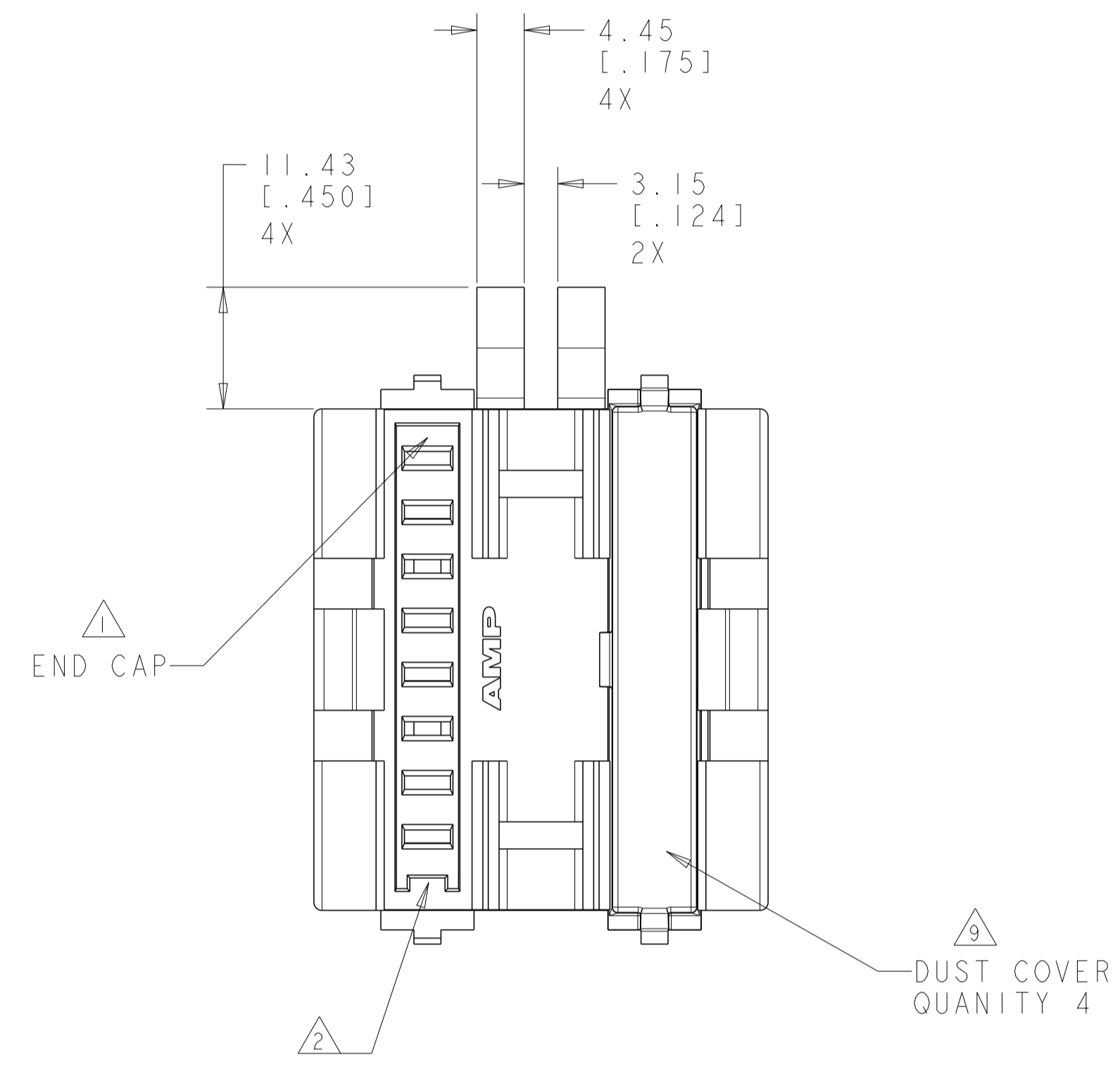
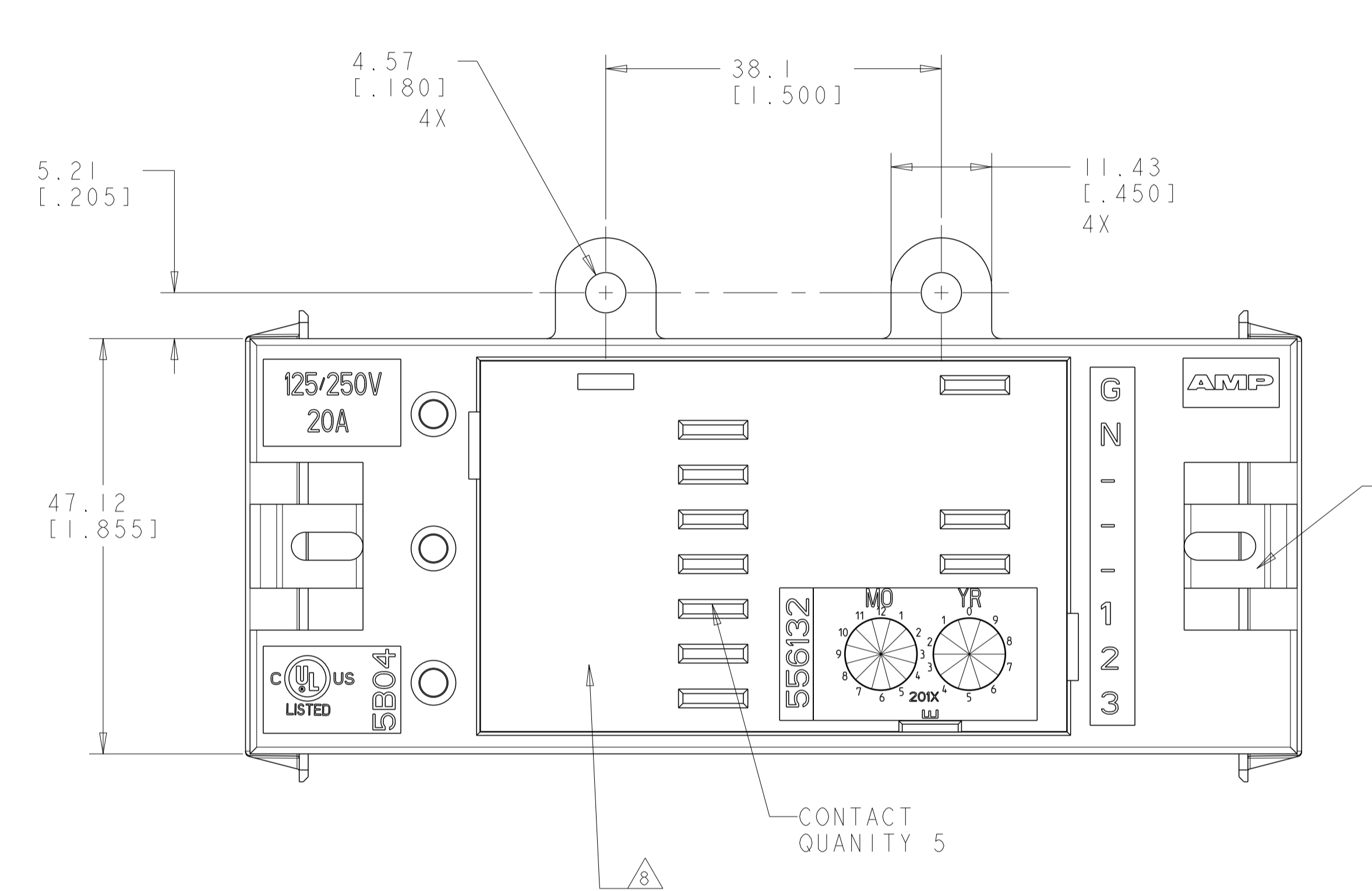
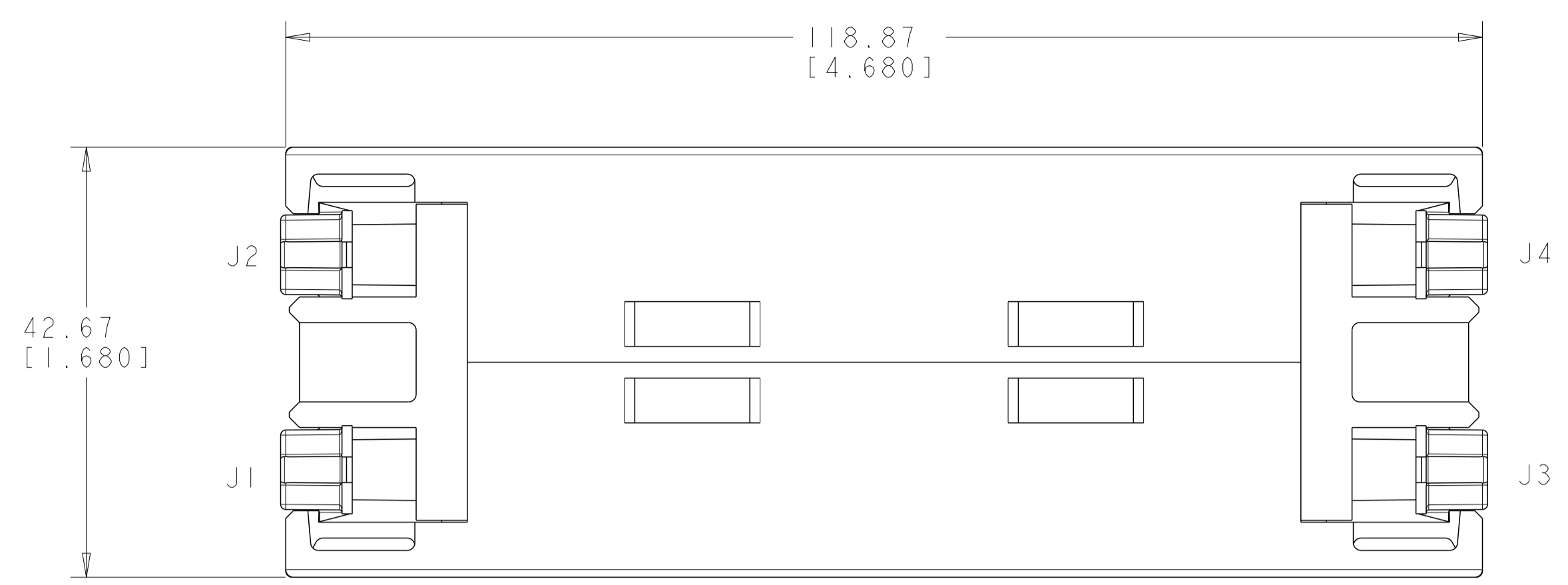
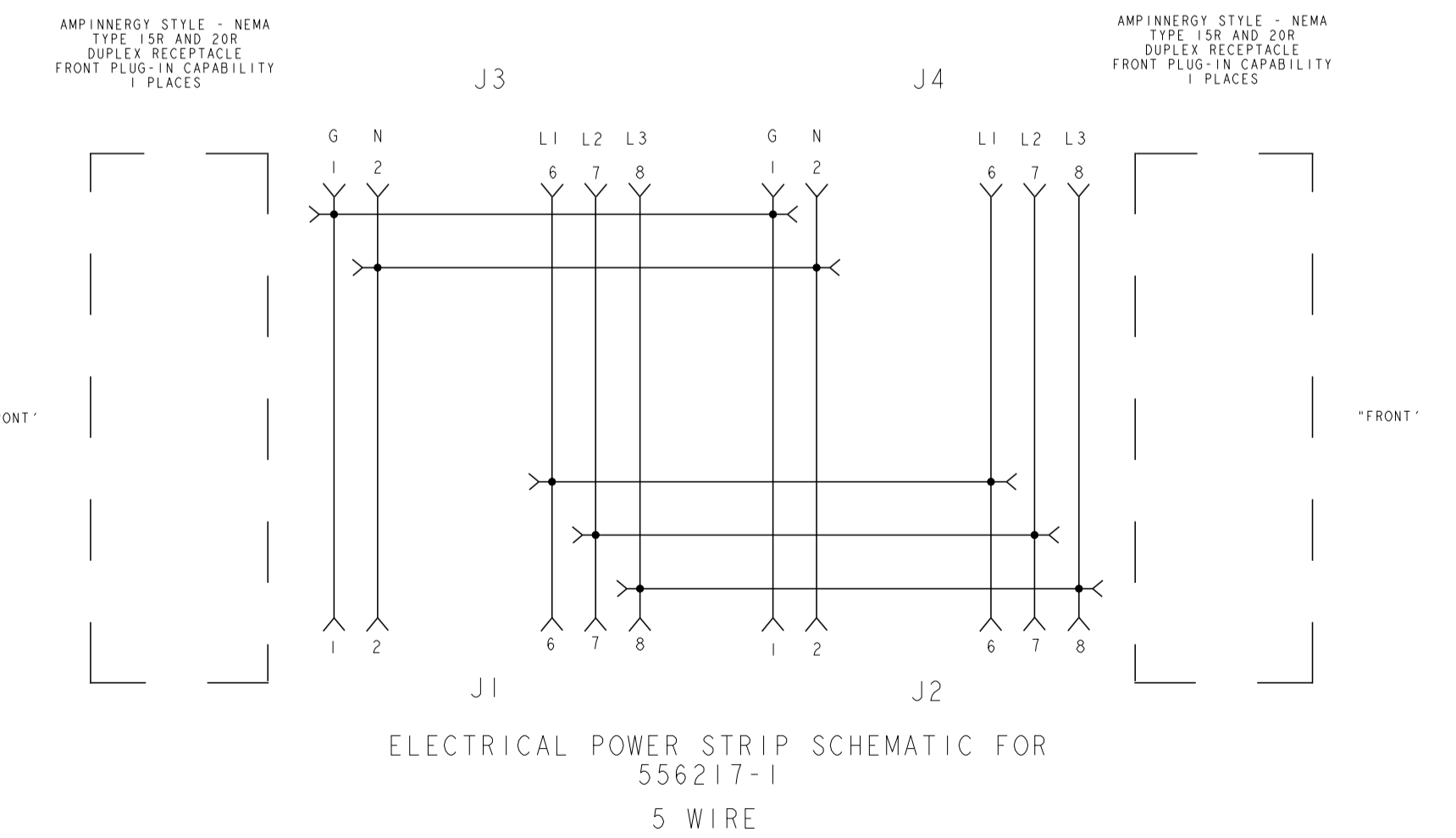
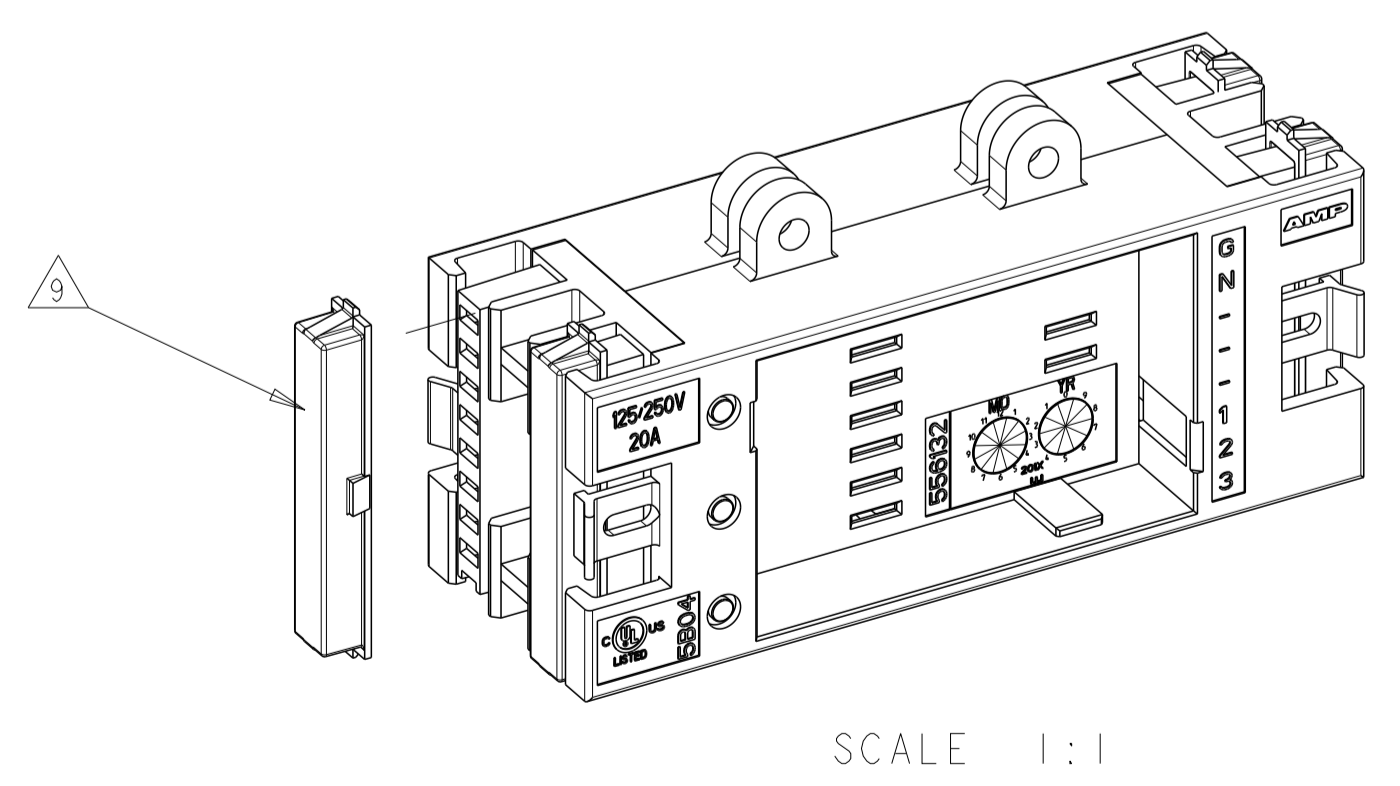


REVISIONS					
P	LTN	DESCRIPTION	DATE	DMN	APVD
D	ECO-14-007817		29MAY2014	JM	SJ



- △ MATES WITH POWER CONNECTOR HARNESS ASSEMBLY, PART NUMBER 555888-().
- △ KEYING FEATURE FOR POSITIVE MATING.
- △ POSITIVE LATCHING TO POWER CONNECTOR.
- 4. 125/250 V, 20A RATING FOR RU
- △ MATERIAL: HOUSING - POLYCARBONATE, BLACK, 94V-0 RATED.
 END CAP- POLYCARBONATE, SOFT WHITE. 94V-0 RATED.
 DUST COVER - NYLON 6/6.
 CONTACT - COPPER ALLOY, SELECTIVE SILVER PLATED 3.81µm [.000150] MINIMUM THICK.
- △ ALL DIMENSIONS ARE NOMINAL UNLESS OTHERWISE SPECIFIED.
- 7. DIMENSIONS IN BRACKETS ARE IN INCHES.
- △ THIS AREA OF THE JUNCTION BOX MATES WITH AMPINERGY DUPLEX RECEPTACLES.
- △ REMOVE DUST COVER, BY GENTLY LIFTING LATCH TO ALLOW CONNECTION OF POWER CONNECTORS.
- 10. APPLICATION: IN LINE OR END OF LINE JUNCTION BOX ASSEMBLY. UP TO TWO DUPLEX RECEPTACLES NEMA TYPE 5-15R 125V, 2 POLE, 3 WIRE, 15 AMPERE AND/OR 5-20R 125V, 2 POLE, 3 WIRE, 20 AMPERE RECEPTACLES CAN BE INSTALLED INTO JUNCTION BOX ASSEMBLY. RECEPTACLES CAN BE INDIVIDUALLY REPLACED WITH DIFFERENT LINE RECEPTACLES TO BALANCE LOADS. ASSEMBLY IS DESIGNED TO PROVIDE IN LINE OR END OF LINE DISTRIBUTION OF POWER WHEN USED WITH AMPINERGY-MODULAR WIRING SYSTEM, A MANUFACTURED WIRING SYSTEM.



556217-1
 PART NUMBER

THIS DRAWING IS A CONTROLLED DOCUMENT.		DMN L. SMITH 15DEC2006	TE Connectivity
DIMENSIONS: MM [INCHES]		CHK L. SMITH 15FEB2007	
TOLERANCES UNLESS OTHERWISE SPECIFIED:		APVD F. LINCOLN 15FEB2007	NAME J-BOX ASSEMBLY, 5 WIRE, DUAL TOP LUG MFG
0 PLC ±	△ 6	PRODUCT SPEC	SIZE CAGE CODE DRAWING NO
1 PLC ±		APPLICATION SPEC	A100779C=556217
2 PLC ±		RESTRICTED TO	
3 PLC ±		WEIGHT	
4 PLC ±		CUSTOMER DRAWING	SCALE 2:1 SHEET 1 OF 1 REV D
ANGLES ±			
MATERIAL	FINISH		