

MICRO SWITCH

A DIVISION OF MINNEAPOLIS-HONEYWELL REGULATOR COMPANY
MINNETONKA, MINNESOTA

FED. MFR. CODE 91929

ACTUATOR - SWITCH

CATALOG LISTING

JX-51

5

REPLACES

RELEASE NO. SR 7760

CHECK R E D 8 SEPT 58

CHECK B L S 8 SEPT 58

CHECK B L S 12 SEPT 58

CHECK 5 SEPT 58

DRAWN

FO-50378

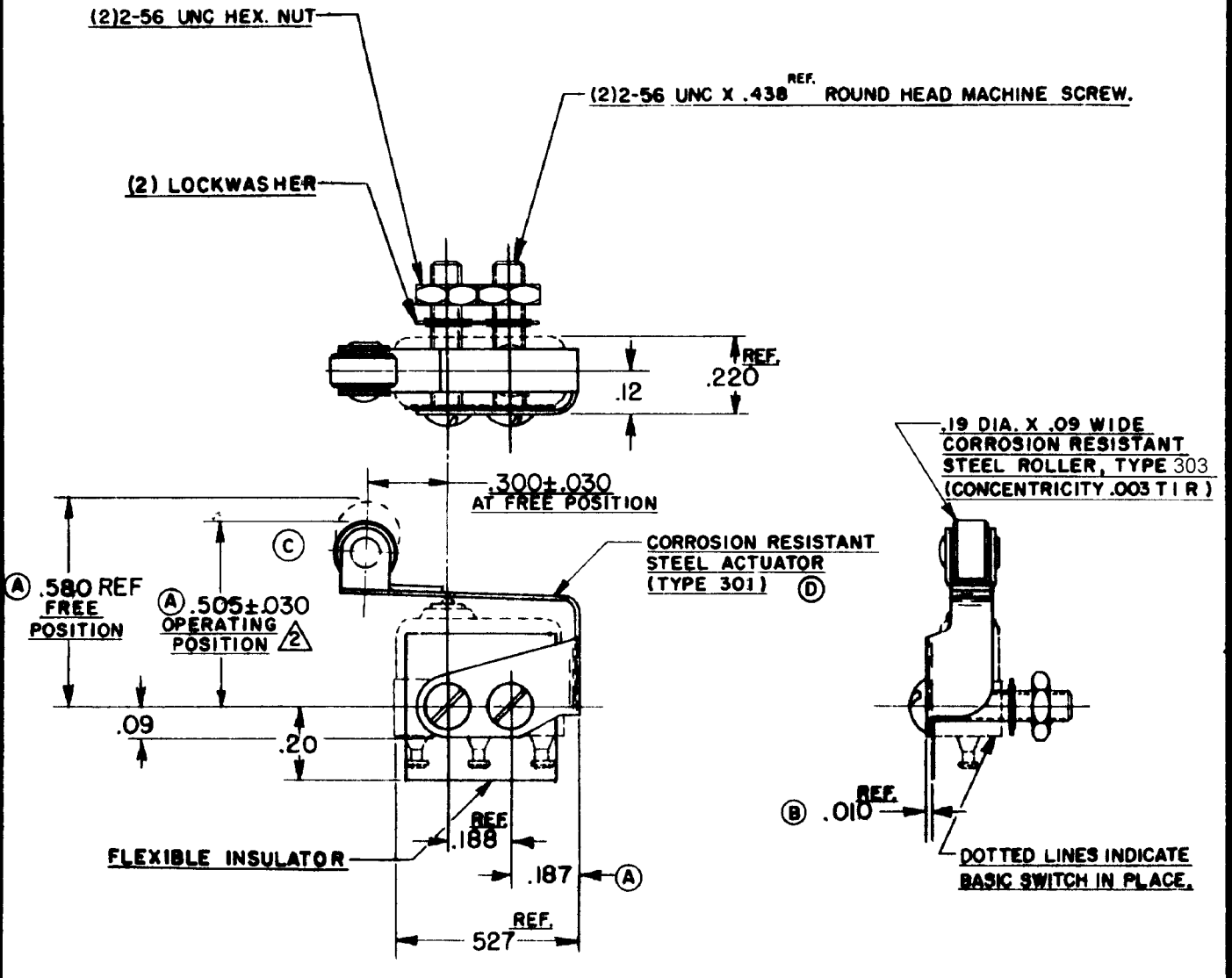
M JX-51

DRAWING NUMBER

ISSUE

REVISIONS

A	CO13644	N B F	27 APR 59
B	CO15829	N B F	17 APRIL 61
C	CO22879	OMW	1 MAY 67
D	CO22579	M B S	19 APR 68
E	CO47771		
		C J H	17 MAY 80
F	CO74163		
		D H D	22 APR 93
G	CO82929		
		B L T	13 MAY 96
H	0015428		
		SPK	14SEP05



NOTE -

- 1 - SCREWS, NUTS, LOCKWASHERS AND INSULATOR FURNISHED UNASSEMBLED.
- 2 - SLIGHT ROTATION BETWEEN BASIC AND ACTUATOR MAY BE NECESSARY TO OBTAIN OPERATING POINT

CHECK	RJ	14SEP05
-------	----	---------

THIS DRAWING COVERS A PROPRIETARY ITEM AND IS THE PROPERTY OF MICRO SWITCH, A DIVISION OF MINNEAPOLIS-HONEYWELL REGULATOR CO. THIS DRAWING IS NOT TO BE COPIED OR USED WITHOUT THE APPROVAL OF MICRO SWITCH.

CHARACTERISTICS WITH ISXI-T BASIC SWITCH INSTALLED		ELECTRICAL DATA		SCALE 2 TO 1
OPERATING FORCE - - - - -	6 OZ. MAX.	CONTACT ARRANGEMENT	BREAK DISTANCE	DO NOT SCALE PRINT
RELEASE FORCE - - - - -	2 OZ. MIN.			UNLESS OTHERWISE SPECIFIED
DIFFERENTIAL TRAVEL - - -	.025 MAX.			DIMENSIONS ARE IN INCHES
OVERTRAVEL - - - - -	.015 MIN.			TOLERANCES ARE:
	(A)			ONE PLACE (.0) ± .030
				TWO PLACE (.00) ± .015
				THREE PLACE (.000) ± .008
				ANGLES ±
				WEIGHT