

High Frequency Ceramic Solutions

868MHz Antenna

P/N 0868AT43A0020

Detail Specification: 10/8/2014

Page 1 of 3

General Specifications

Part Number	0868AT43A0020
Frequency Range	858 - 878 Mhz
Peak Gain	-1.0 dBi typ. (XZ-total)
Average Gain	-4.0 dBi typ. (XZ-total)
Return Loss	9.5 dB min.

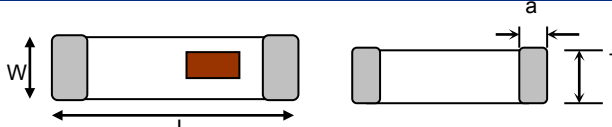
Input Power	3W max. (CW)
Impedance	50 Ω
Operating Temperature	-40 to +85°C
Reel Quantity	1,000
MSL	1

Part Number Explanation

P/N Suffix	Packing Style	Bulk	Suffix = S	eg. 0868AT43A0020S
		T & R	Suffix = E	eg. 0868AT43A0020E
	Termination style	100% Tin	Suffix = None	eg. 0868AT43A0020 (E or S)
		Tin / Lead	Please Consult Factory	

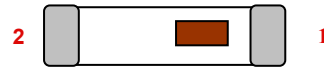
Mechanical Dimensions

	In	mm
L	0.276 \pm 0.008	7.00 \pm 0.20
W	0.079 \pm 0.008	2.00 \pm 0.20
T	0.031 + .004/-0.008	0.80 + 0.1/-0.2
a	0.020 \pm 0.012	0.50 \pm 0.30



Terminal Configuration

No.	Function
1	Feeding Point
2	NC



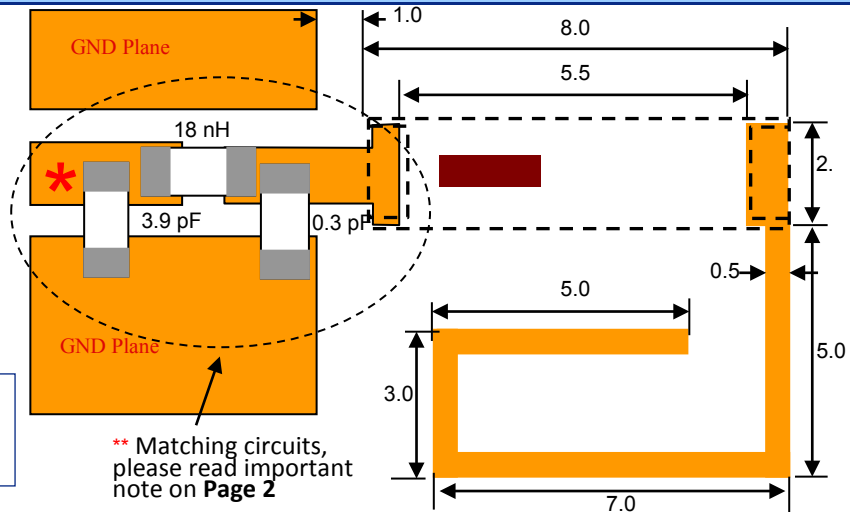
Mounting Considerations

Mount these devices with brown mark facing up. Units: mm

* Line width should be designed to provide 50 Ω impedance matching characteristics.

With Matching Circuit

JTI P/Na for Matching Circuit: **
 Cap (0.3pF): 500R07S0R3BV4T
 Cap (3.9pF): 500R07S3R9BV4T
 Inductor (18nH): L-07C18NJV6T



** Matching circuits, please read important note on Page 2

Johanson Technology, Inc. reserves the right to make design changes without notice.

All sales are subject to Johanson Technology, Inc. terms and conditions.



www.johansontechnology.com

4001 Calle Tecate • Camarillo, CA 93012 • TEL 805.389.1166 FAX 805.389.1821

Ver 1.6

2013 Johanson Technology, Inc. All Rights Reserved

High Frequency Ceramic Solutions

868MHz Antenna

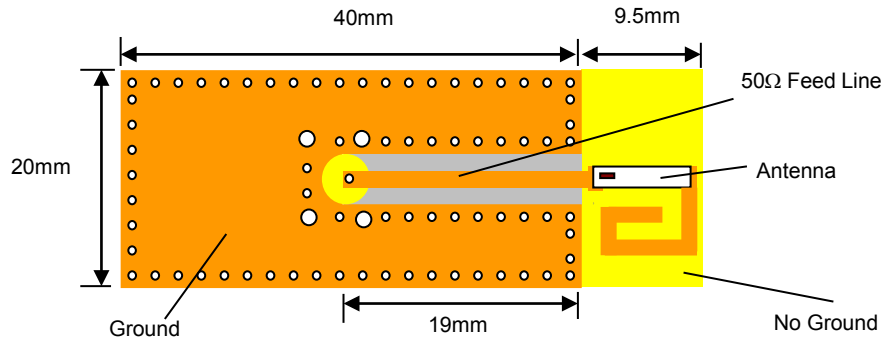
P/N 0868AT43A0020

Detail Specification: 10/8/2014

Page 2 of 3

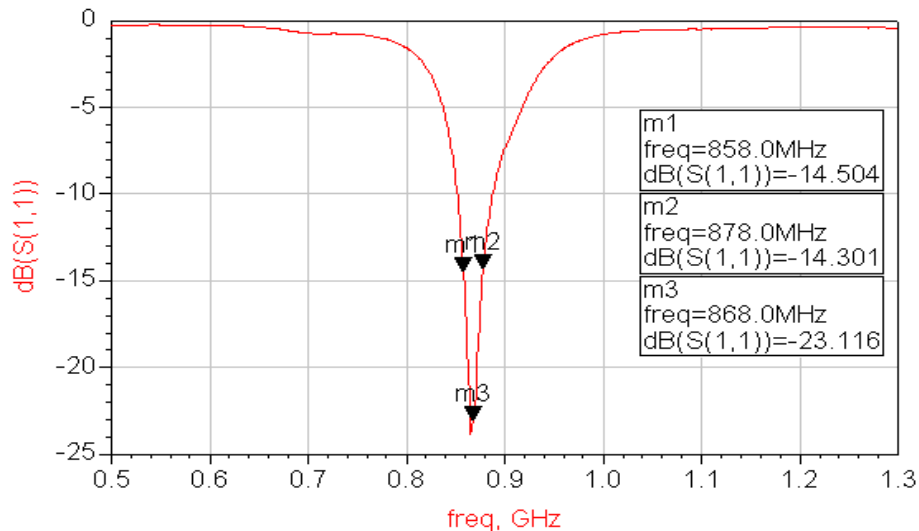
Mounting Considerations

Test Board used orderable p/n: 0868AT43A0020-EB1SMA (comes with SMA connector)



Note: It is recommended that the designer leave available slots for a "pi" (or shunt-series-shunt) network. The antenna matching network values above are used when antenna is mounted on Johanson's evaluation board. The matching values on client's PCB will be different. Go to: <http://johansontechnology.com/tuning> and see how to obtain the new values. If you need further help, contact our RF Applications Eng Team at: <http://www.johansontechnology.com/en/ask-a-technical-question.html>

Return Loss (with matching)



Johanson Technology, Inc. reserves the right to make design changes without notice.
All sales are subject to Johanson Technology, Inc. terms and conditions.

High Frequency Ceramic Solutions

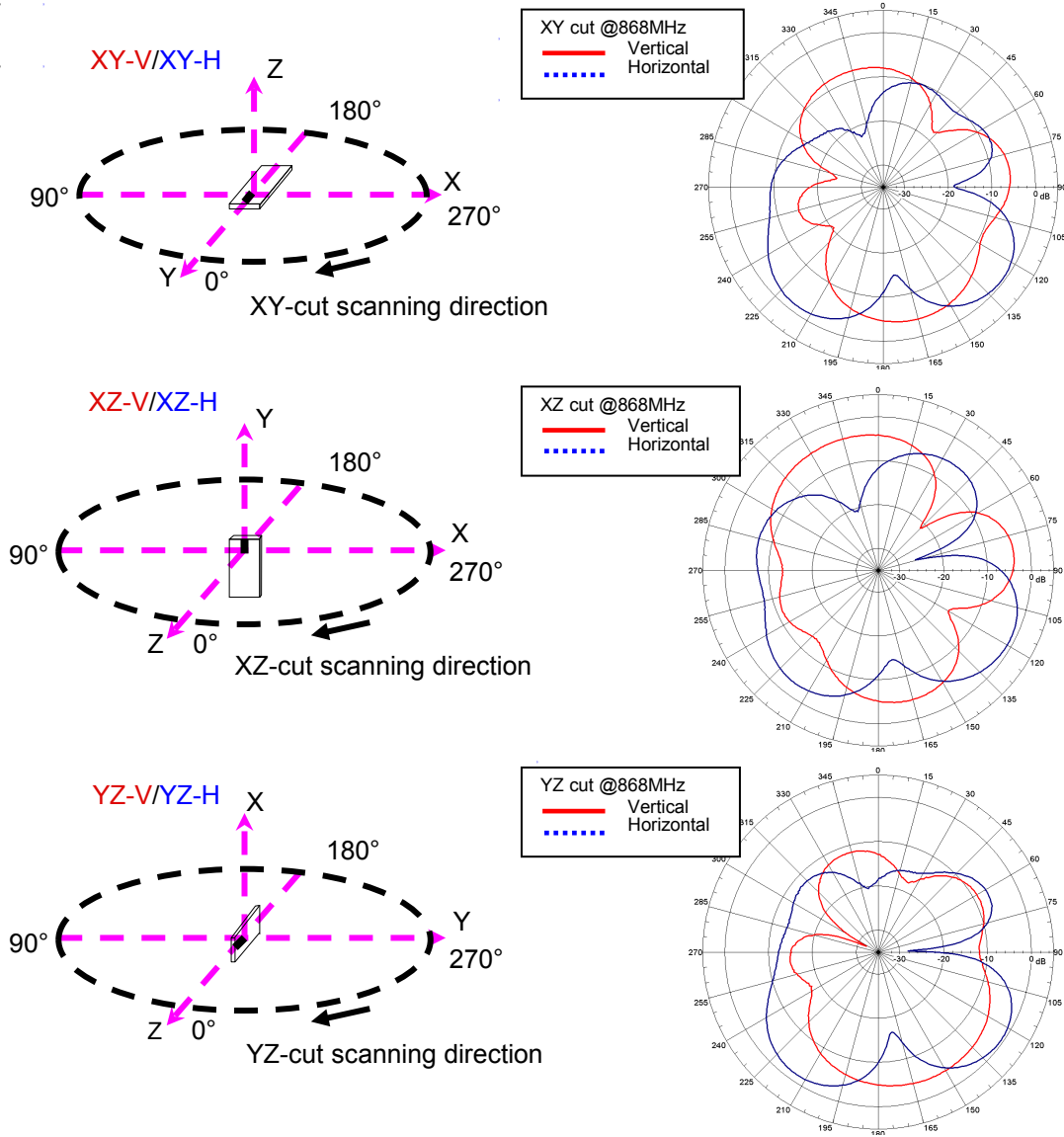
868MHz Antenna

P/N 0868AT43A0020

Detail Specification: 10/8/2014

Page 3 of 3

Typical Radiation Patterns



Johanson Technology, Inc. reserves the right to make design changes without notice.
 All sales are subject to Johanson Technology, Inc. terms and conditions.



www.johansontechnology.com

4001 Calle Tecate • Camarillo, CA 93012 • TEL 805.389.1166 FAX 805.389.1821

Ver 1.6

2013 Johanson Technology, Inc. All Rights Reserved