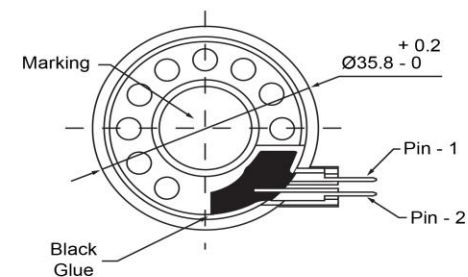
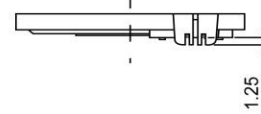
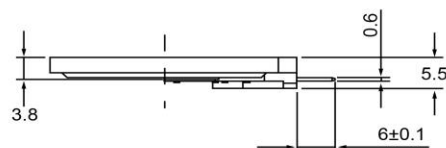
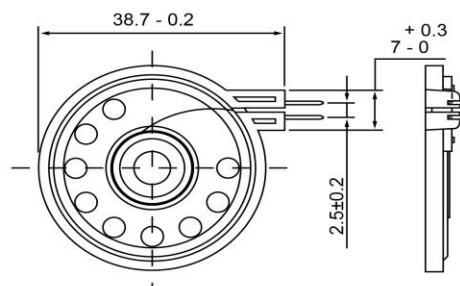


TOP VIEW

SIDE VIEW (1)

SIDE VIEW (2)

BOTTOM VIEW



Specifications

Description	Value	Unit
Shape	Round	
Resonant Frequency	500	(Hz)
Frequency Range	250 ~ 6,700	(Hz)
SPL @ 10cm	95	(dBA)
Impedance	50	(Ohm)
Cone Material	Polyetherimide	
Nominal Power	0.1	(W)
Max Power	0.2	(W)
Mount Type	Flush Mount	
Operating Temperature	-40 ~ +85	°C
Storage Temperature	-40 ~ +85	°C
Weight	6.6	(g)

Notes

- 1) All dimensions are in mm unless otherwise noted
- 2) All parts meet RoHS



DB UNLIMITED

High Temp Dynamic Speaker

Revision History

Version	Description			Date	Approved
1	Released from Engineering			2/5/2014	J.S.

SM360450-1