

6A to 150A, 500VAC EMI Filters

Features

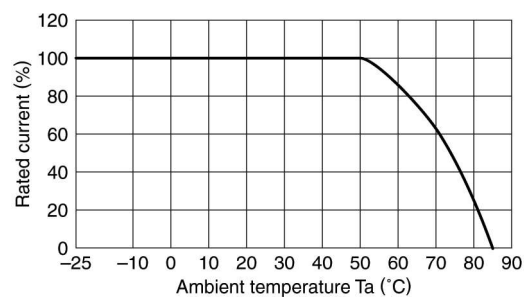
- ◆ Two Stage Filter for Better Performance
- ◆ Narrow Profile
- ◆ Conforms to UL and EN Safety Agency Certifications



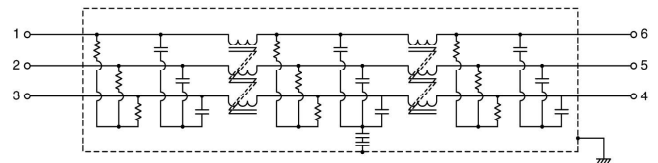
Specifications

| Model | | RTHB-5006 | RTHB-5010 | RTHB-5020 | RTHB-5030 | RTHB-5040 |
|------------------------------|----|---|-----------|-----------|-----------|-----------|
| Rated Voltage (AC, DC) | V | 500V Three phase | | | | |
| Rated Current | A | 6A | 10A | 20A | 30A | 40A |
| DC Resistance (total) | mΩ | 290 | 120 | 50 | 26 | 20 |
| Model | | RTHB-5050 | RTHB-5060 | RTHB-5080 | RTHB-5100 | RTHB-5150 |
| Rated Voltage (AC, DC) | V | 500V Three phase | | | | |
| Rated Current | A | 50A | 60A | 80A | 100A | 150A |
| DC Resistance (total) | mΩ | 14 | 10 | 10 | 8 | 6 |
| Withstand Voltage | V | Terminals to Case: 2500VAC (1 Minute) | | | | |
| Isolation Resistance | MΩ | 100MΩ minimum (500VDC, 1 Minute) | | | | |
| Leakage Current (max) | mA | 2.5mA at 250VAC 60Hz, 5mA at 500VAC 60Hz | | | | |
| Operating Temperature | °C | -25 to +85°C (Derate above 50°C, see derating curve) | | | | |
| Storage Temperature | °C | -25 to +85°C | | | | |
| Safety Agency Certifications | - | UL1283 & EN60939 | | | | |
| Weight | g | 800g to 12000g model dependant (See weights chart on website) | | | | |
| Warranty | yr | 5 Year | | | | |

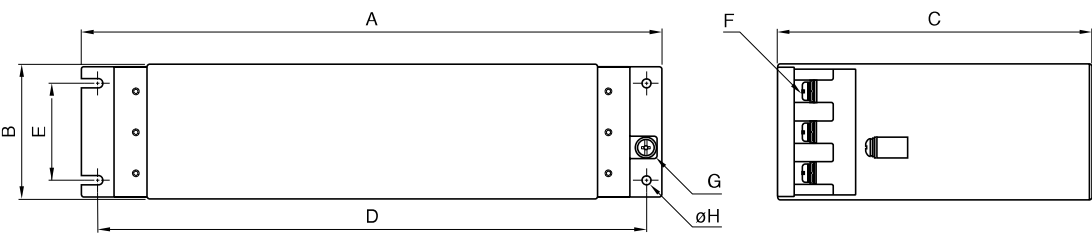
Derating



Circuit



Outline Drawing



| Dimensions in mm | | | | | | | | | |
|------------------|-----|-----|-----|-----|----|----|----|-----|--|
| Part No. | A | B | C | D | E | F | G | H | Recommended clamping torque |
| RTHB-5006 | 210 | 64 | 100 | 200 | 40 | M4 | M4 | 4.5 | M4 1.27N m M5 2.5N m M6 4.8N m M8 7.64N m |
| RTHB-5010 | | | | | | | | | |
| RTHB-5020 | 240 | 64 | 115 | 230 | 40 | M4 | M4 | 4.5 | |
| RTHB-5030 | | | | | | | | | |
| RTHB-5040 | 300 | 80 | 140 | 285 | 46 | M5 | M4 | 5.5 | |
| RTHB-5050 | | | | | | | | | |
| RTHB-5060 | | | | | | | | | |
| RTHB-5080 | 472 | 100 | 205 | 452 | 63 | M8 | M6 | 6.5 | |
| RTHB-5100 | | | | | | | | | |
| RTHB-5150 | 534 | 100 | 234 | 514 | 63 | M8 | M6 | 6.5 | |

For Additional Information, please visit
us.tdk-lambda.com/lp/products/r-series.htm

