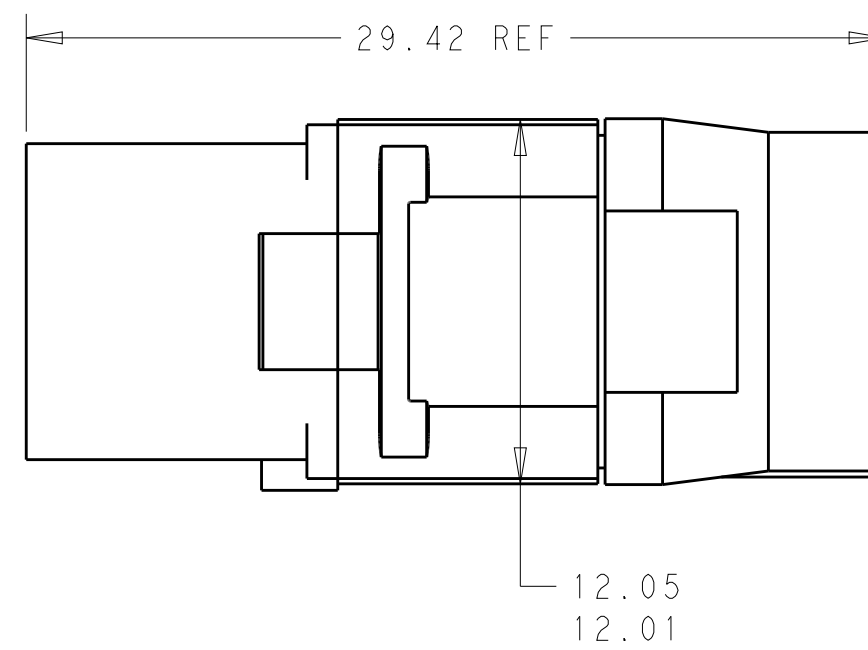
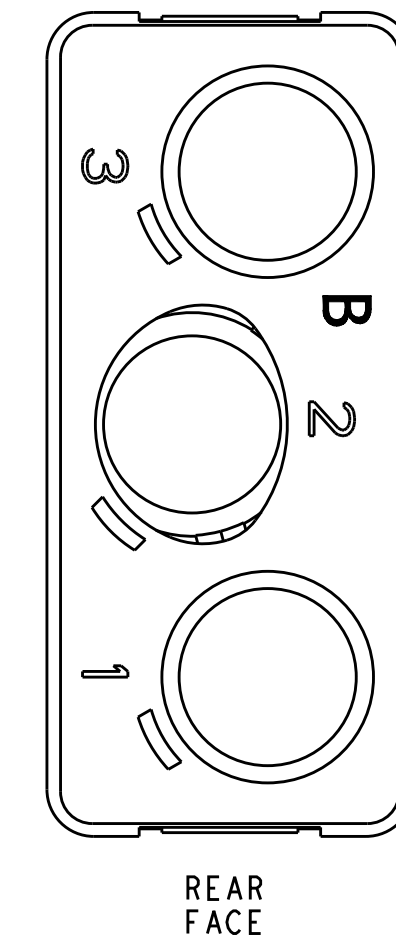
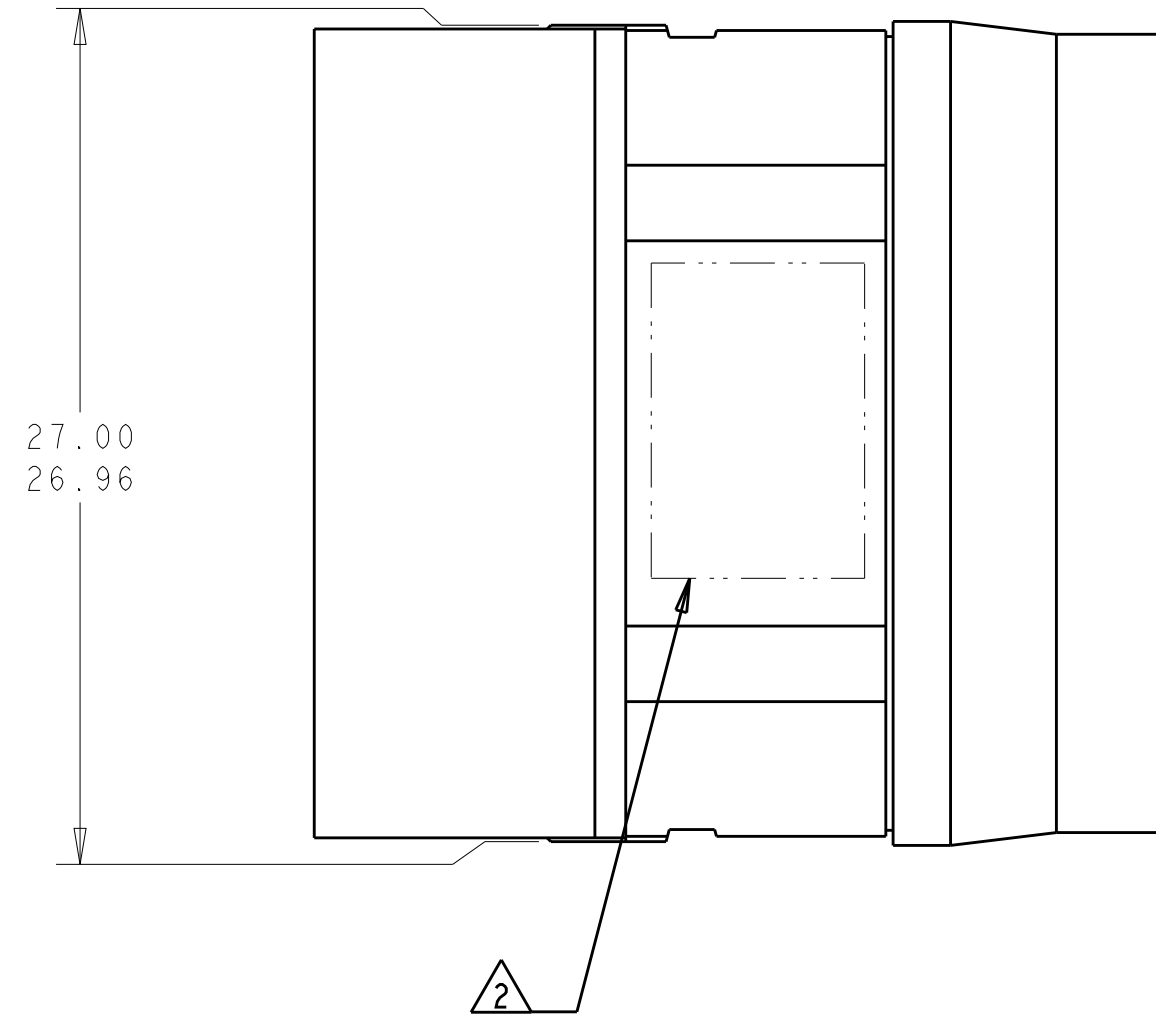
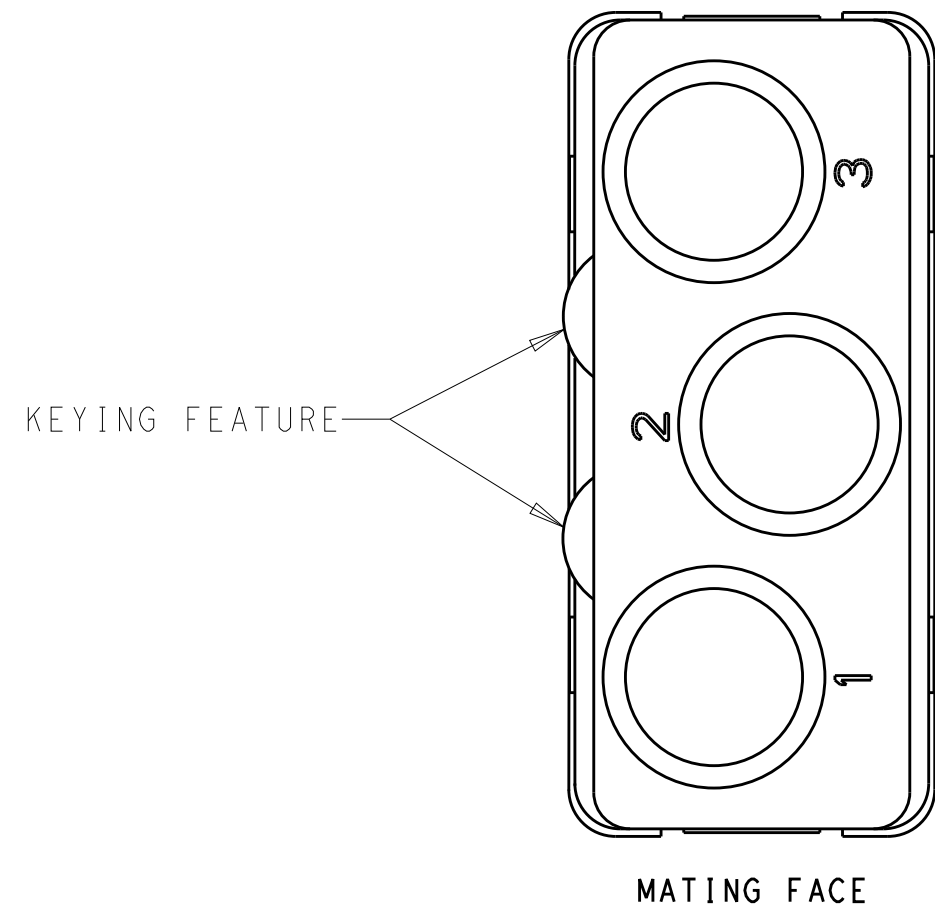


THIS DRAWING IS UNPUBLISHED. RELEASED FOR PUBLICATION  
 © COPYRIGHT - BY - ALL RIGHTS RESERVED.

REVISIONS				
P	LTR	DESCRIPTION	DATE	APVD
A		REV PER ECO 14-002245	19DEC2013	CT KH



- 1 MATERIALS:  
 FRONT & REAR INSULATORS: HIGH TEMP THERMOPLASTIC OR THERMOSET EPOXY PER ASTM D5948  
 CONTACT RETENTION CLIPS: COPPER ALLOY PER ASTM B194 OR STAINLESS STEEL PER ASTM A666  
 REAR GROMMET: FLUOROSILICONE ELASTOMER PER MIL-R-25988 B, EXCEPT 4.6.6.1
- 2 TE LOGO, PART NO AND DATE CODE (YY WW) MARKED IN THIS AREA. (TE PART NUMBER MAY BE MARKED EITHER ON INSULATOR OR GROMMET)
3. DESCRIPTIVE PART NO.: GPRBE303SB  
 THIS INSERT CONTAINS 3 CAVITIES FOR SIZE 8 QUADRAX SOCKET CONTACTS
4. THIS PRODUCT IS SOLD BY TE CONNECTIVITY UNDER A LICENSE FROM RADIAL SA.

1877700-1  
 PART NO.

THIS DRAWING IS A CONTROLLED DOCUMENT.		DWN C.C. THOMAS 19DEC2013	TE Connectivity	
DIMENSIONS:		CHK K. HOGAN 12-19-13		
mm	TOLERANCES UNLESS OTHERWISE SPECIFIED:	APVD K. HOGAN 12-19-13	NAME INSERT ASSEMBLY, SOCKET, ARR 303, KEY B, GPRB, ENVIRONMENTAL	
0 PLC ±	1 PLC ±	PRODUCT SPEC	SIZE A2	
2 PLC ±	3 PLC ±	APPLICATION SPEC	CAGE CODE -	
4 PLC ±	ANGLES ±	WEIGHT	DRAWING NO G-1877700	
MATERIAL	FINISH	Customer Drawing	RESTRICTED TO	
-	-	SCALE 4:1	SHEET 1 OF 1 REV A	