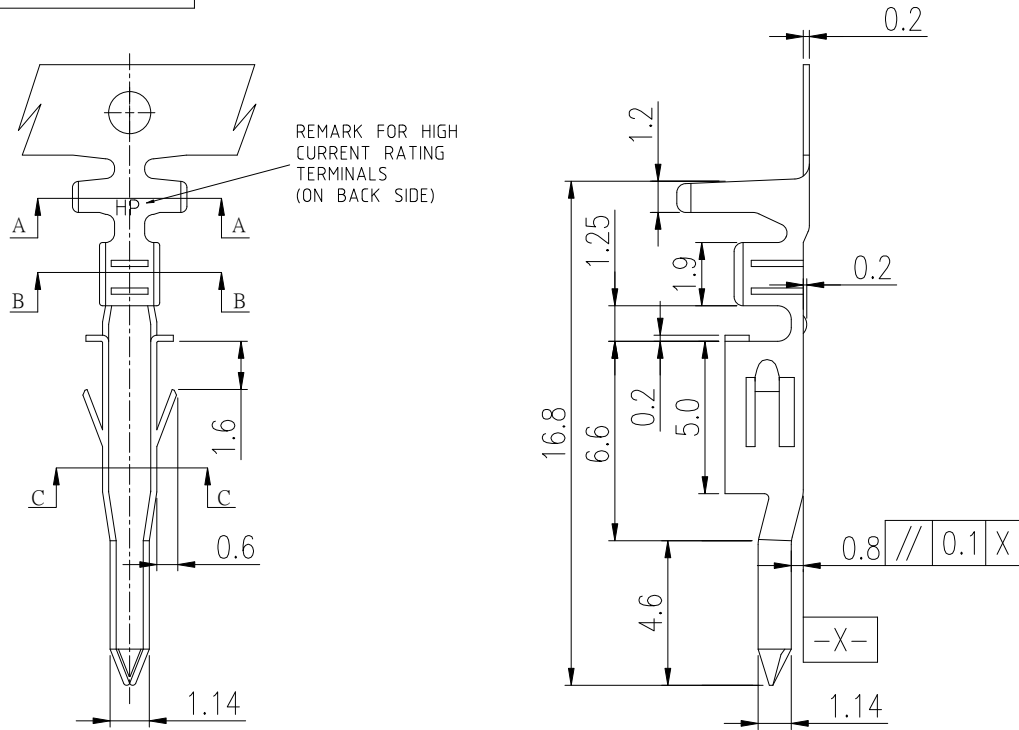


PRODUCT NUMBER
SEE PART NO. TABLE



NOTES:

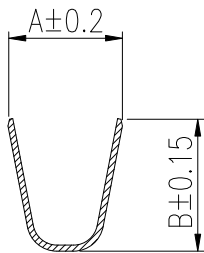
1. MATERIAL: HIGH CONDUCTIVITY COPPER ALLOY.
2. THIS TERMINAL IS USED WITH FCI PLUG HSG 10127816 AND 10122956 SERIES.
3. MATE WITH FCI HCC REC. TERMINAL FOR HIGH CURRENT APPLICATION.
4. PRODUCT SPECIFICATION: GS-12-1333.
5. PACKAGE SPECIFICATION: GS-14-2362.
6. PART NUMBER SCHEME:
10136290- 1 X 1 X LF

PLATING TYPE:
P: PRE-PLATED
BLANK: POST-PLATED

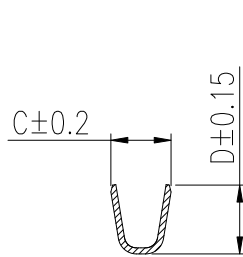
PLATING CODE:
1: GOLD FLASH
2: TIN

7. DIMENSIONAL & PART NO. TABLE:

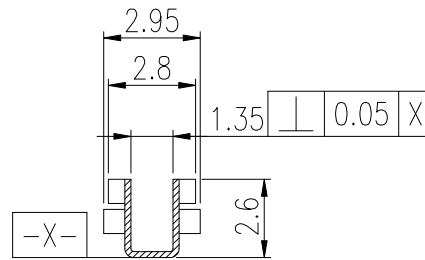
PART NO.	A	B	C	D	APPLICABLE WIRES
10136290-1X1XLF	3.7	4.5	1.8	2.7	#16~#20 MAX. OD: 3.1mm



SEC A-A



SEC B-B



SEC C-C

mat'l. code		surface		tolerance	projection	product family	
					⊕	MINITEK PWR4.2 HCC	
ltr	ecn no	dr	date	tolerances unless otherwise specified		title	
A		TAI	2015-07-27	angles	X.X ±0.4	MINITEK PWR4.2 PLUG TERMINAL	
				parallel	X.XX ±0.3	HIGH CURRENT RATING	
				X°±1°		scale	
		dr	KENNY TAI	2015-07-23		dwg no	
		enr	KENNY TAI	2015-07-23		sheet 1 of 1	
		chr	KENNY TAI	2015-07-23		size	
		appd	PM ZHENG	2015-07-27		A4	
sheet index		revision sheet	A	1	type		CUSTOMER Drawing

