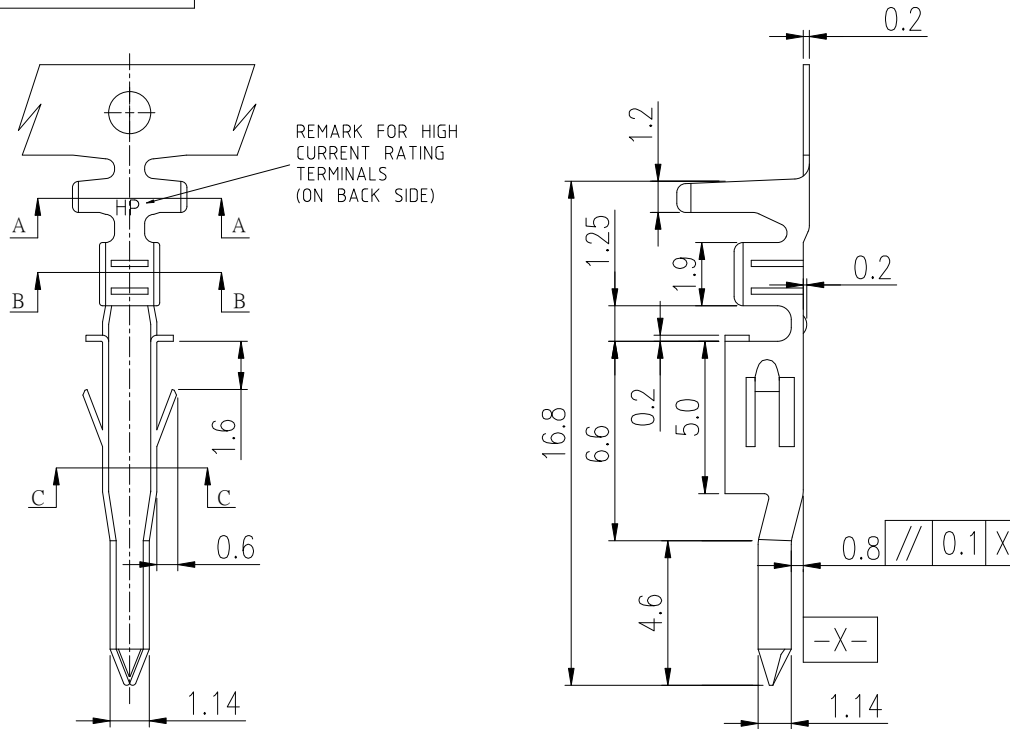


PRODUCT NUMBER  
SEE PART NO. TABLE



NOTES:

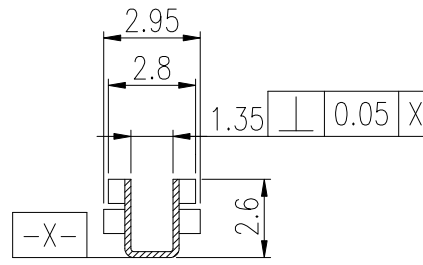
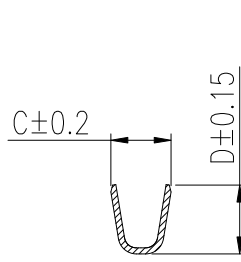
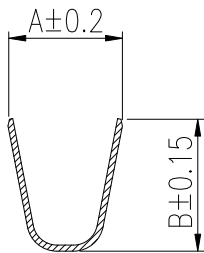
1. MATERIAL: HIGH CONDUCTIVITY COPPER ALLOY.
2. THIS TERMINAL IS USED WITH FCI PLUG HSG 10127816 AND 10122956 SERIES.
3. MATE WITH FCI HCC REC. TERMINAL FOR HIGH CURRENT APPLICATION.
4. PRODUCT SPECIFICATION: GS-12-1333.
5. PACKAGE SPECIFICATION: GS-14-2362.
6. PART NUMBER SCHEME:  
10136290- 1 X 1 X LF

PLATING TYPE:  
P: PRE-PLATED  
BLANK: POST-PLATED

PLATING CODE:  
1: GOLD FLASH  
2: TIN

7. DIMENSIONAL & PART NO. TABLE:

PART NO.	A	B	C	D	APPLICABLE WIRES
10136290-1X1XLF	3.7	4.5	1.8	2.7	#16~#20 MAX. OD: 3.1mm



mat'l. code		surface		tolerance	projection	product family	
ltr		ecn no	dr	date	tolerances unless otherwise specified		MINITEK PWR4.2 HCC
A		TAI		2015-07-27	angles	X.X ±0.4	title
					mm	X.XX ±0.3	MINITEK PWR4.2 PLUG TERMINAL
					X°±1°		HIGH CURRENT RATING
					dr	KENNY TAI	2015-07-23
					enr	KENNY TAI	2015-07-23
					chr	KENNY TAI	2015-07-23
					appd	PM ZHENG	2015-07-27
sheet index	revision sheet	A	1				
						type CUSTOMER Drawing	