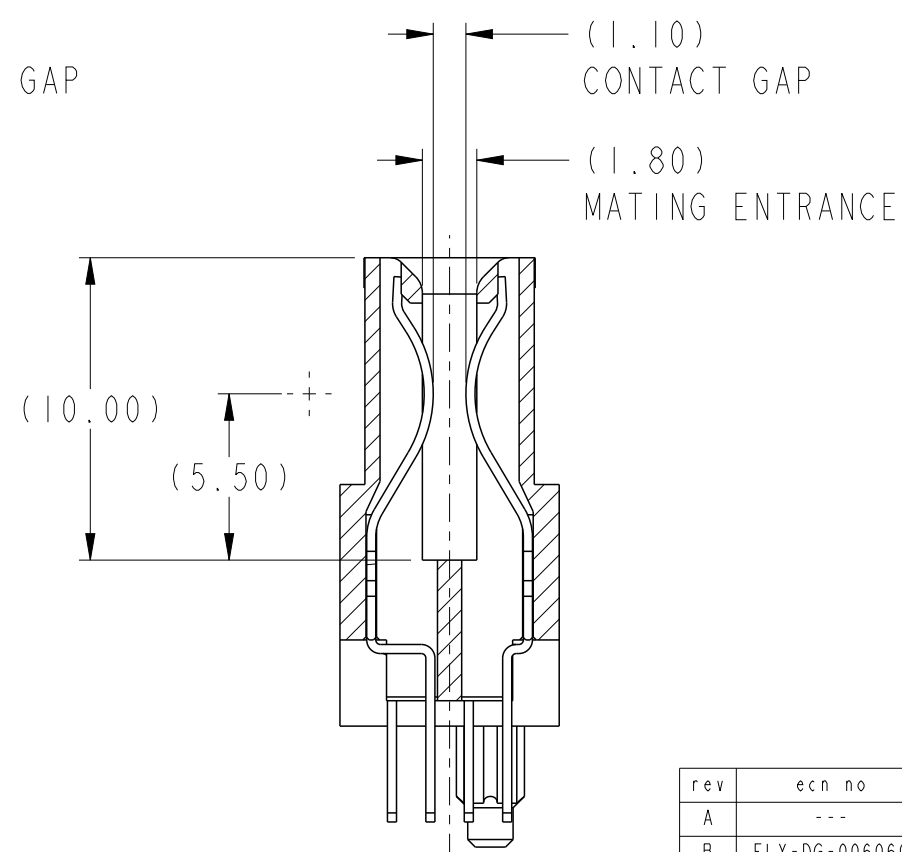


SECTION C-C



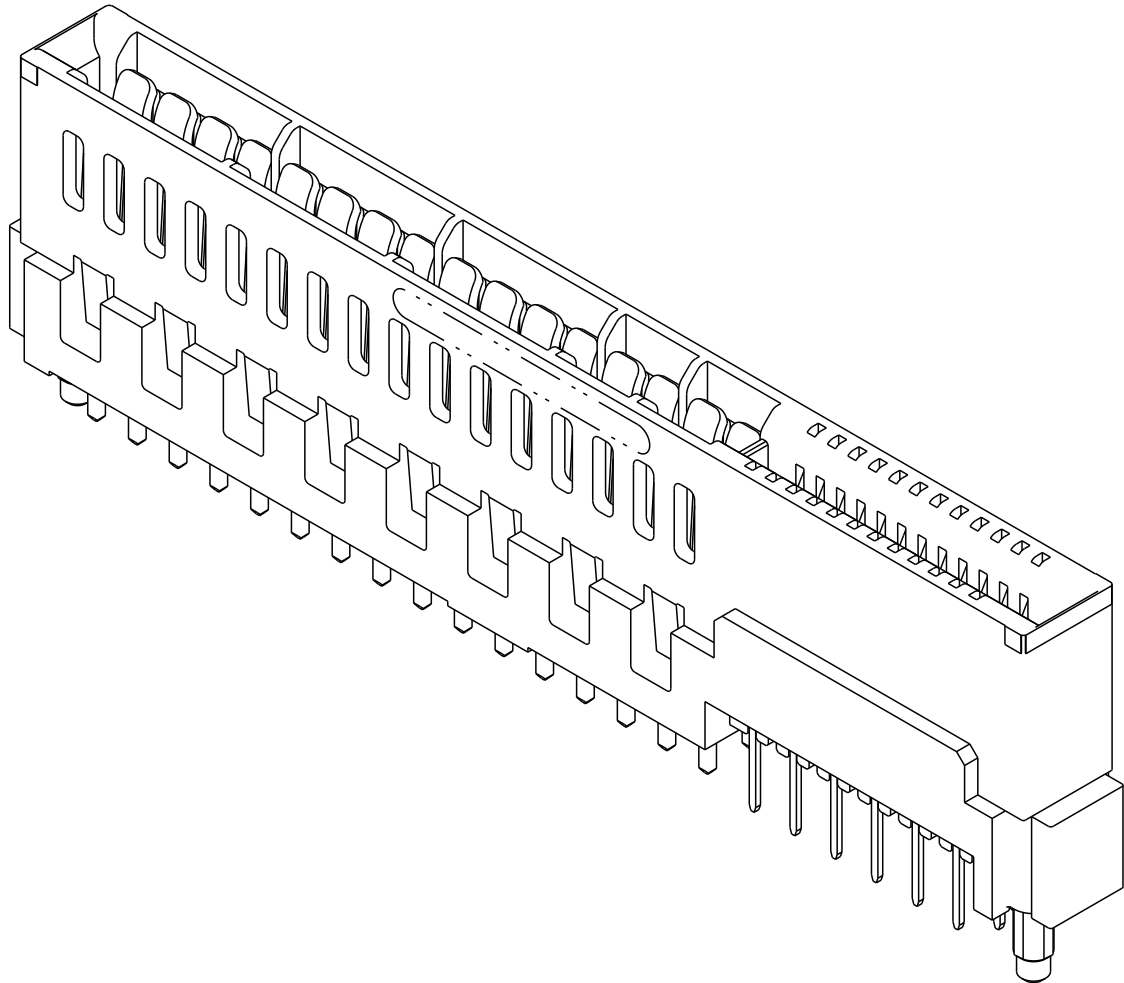
SECTION D-D

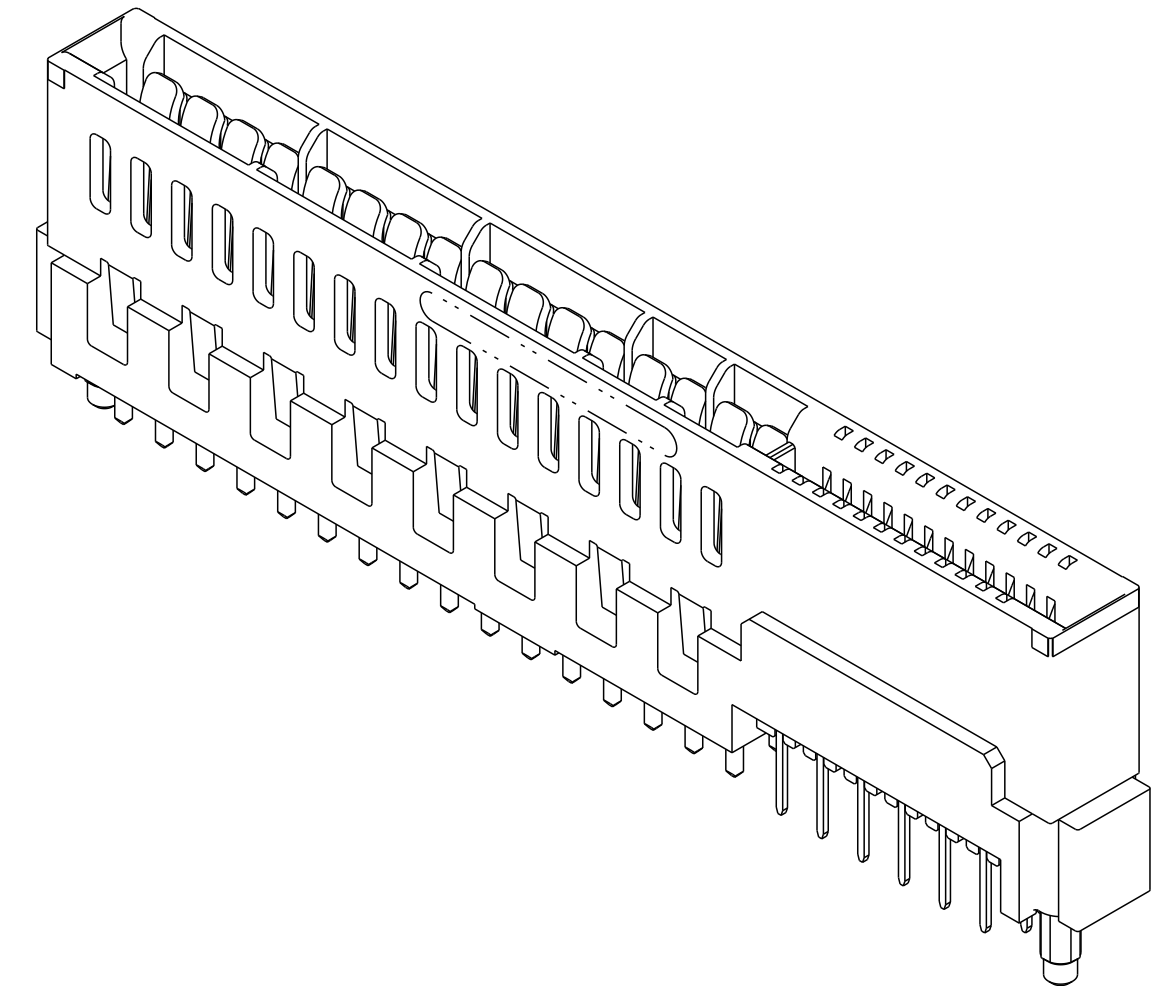
rev	ecn no	dr	date
A	---	HZ	2011-07-03
B	ELX-DG-006060	WL	2011-09-19
-	-	-	-
-	-	-	-
-	-	-	-

spec ref	-
tolerance std	ASME Y14.5
surface	✓
linear	0.X ±0.3 0.XX ±0.1 0.XXX ±0.05
angular	0° ±0°

dr	Marty Glass	2010/08/10
eng	Wei-Long Zhang	2011/09/19
chr	Jon Qin	2011/09/19
appr	Pei-Ming Zheng	2011/09/19

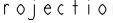


projection	MM	size	A2	scale	4:1
product family	HPCE	ecn no	ELX-DG-006060-1	rel level	Released
title	VERT RECT (32P-24S) HIGH POWER CARD EDGE	dwg no	10115772	rev	B

1	2	3	4	5	6	7	8
HPCE PART NUMBER (TABLE 3)							
PART NUMBER	TAIL TYPE	ORIENTATION KEY	DIM "A" TYPICAL TAIL LENGTH	DIM "B" RECOMMENDED BOARD THICKNESS			
10115772-001LF	SOLDER	YES	3.17 ±0.25	1.59 - 2.38			
10115772-002LF	SOLDER	NO					
10115772-003	PRESS-FIT	YES	3.17 ±0.25	1.57 MIN			
10115772-003LF	PRESS-FIT	YES					
10115772-004	PRESS-FIT	NO					
10115772-004LF	PRESS-FIT	NO					
NOTES:							
1. CONNECTOR MATERIALS:							
HOUSING: HIGH TEMPERATURE THERMAL PLASTIC, BLACK							
UL 94V-0 COMPLIANT							
CONTACTS: HIGH PERFORMANCE COPPER ALLOY.							
2. CONTACT FINISH REF. GS-12-604 SECTION 5.2.							
3. PRODUCT SPECIFICATION: GS-12-604.							
4. APPLICATION SPECIFICATION: GS-20-128.							
5. PRODUCT MARKING (PRODUCT NUMBER & DATE CODE) ON HOUSING IN AREA SHOWN.							
6. PACKAGING MEETS FCI SPECIFICATION GS-14-937.							
7. HOUSING COMPONENT WILL WITHSTAND EXPOSURE TO 260°C PEAK TEMPERATURE FOR 60 SECONDS IN A CONVECTION, INFRA-RED, OR VAPOR PHASE REFLOW OVEN.							
8. COPPER PLATING THICKNESS IN CENTER OF VIA-HOLE CAN BE NO MORE THAN 0.003 LESS THAN OTHER AREAS.							
9. ALL HOLE SIZES ARE FINISHED HOLE SIZES.							
10. MOUNTING HOLES ARE UNPLATED							
Ø 2.40 +/- 0.1 FOR PRESS-FIT TAILS							
Ø 2.10 +/- 0.1 FOR SOLDER TAILS							
							
dr Marty Glass 2010/08/10 projection MM size A2 scale 4:1							
eng Wei-Long Zhang 2011/09/19							
chr Jon Qin 2011/09/19							
appr Pei-Ming Zheng 2011/09/19 product family HPCE rel level Released							
FCI title VERT RECT (32P-24S) dwg no 10115772 rev B							
www.fci.com cat. no. - Product - Customer Drw sheet 4 of 4							
PDS: Rev :B STATUS:Released Printed: Sep 19, 2011							



NOTES:

1. CONNECTOR MATERIALS:
HOUSING: HIGH TEMPERATURE THERMAL PLASTIC, BLACK
UL 94V-0 COMPLIANT
CONTACTS: HIGH PERFORMANCE COPPER ALLOY.
2. CONTACT FINISH REF. GS-12-604 SECTION 5.2.
3. PRODUCT SPECIFICATION: GS-12-604.
4. APPLICATION SPECIFICATION: GS-20-128.
5. PRODUCT MARKING (PRODUCT NUMBER & DATE CODE) ON HOUSING IN AREA SHOWN.
6. PACKAGING MEETS FCI SPECIFICATION GS-14-937.
7. HOUSING COMPONENT WILL WITHSTAND EXPOSURE TO 260°C PEAK TEMPERATURE FOR 60 SECONDS IN A CONVECTION, INFRA-RED, OR VAPOR PHASE REFLOW OVEN.
8. COPPER PLATING THICKNESS IN CENTER OF VIA-HOLE CAN BE NO MORE THAN 0.003 LESS THAN OTHER AREAS.
9. ALL HOLE SIZES ARE FINISHED HOLE SIZES.
10. MOUNTING HOLES ARE UNPLATED
Ø 2.40 +/- 0.1 FOR PRESS-FIT TAILS
Ø 2.10 +/- 0.1 FOR SOLDER TAILS

dr	Marty Glass	2010/08/10			size	A2	scale	4:1	
eng	Wei-Long Zhang	2011/09/19			ecn no	ELX-DG-006060-1			
chr	Jon Qin	2011/09/19			rel level	Released			
appr	Pei-Ming Zheng	2011/09/19	product family		HPCE				
			title		10115772			rev	
			VERT RECT (32P-24S)					B	
			HIGH POWER CARD EDGE						
www.fci.com			cat. no.	-	Product - Customer Drw			sheet 4 of 4	