

E

D

C

B

A

E

D

C

B

A

6

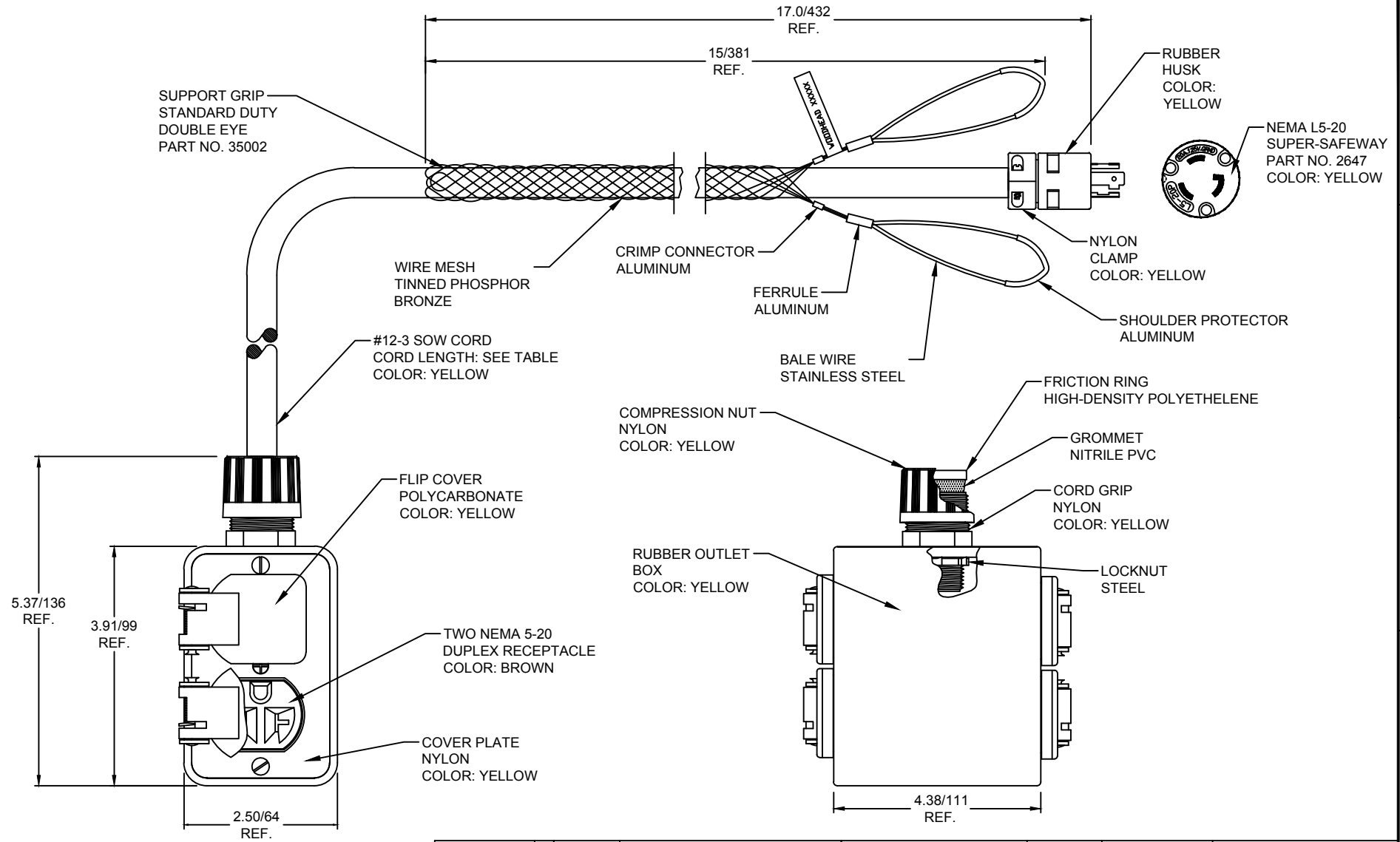
5

4

3

2

1





MATERIAL NO.	ENGINEERING NO.	CORD LENGTH
1301370299	130137-0299	6 FEET
1301370302	130137-0302	8 FEET

ADDED 130137-0302	11/19/13
EC NO: IGC2013-0392	DRWN: HRUIZ01
CHKD: HKNEELAN	APPR: JFMURPHY
DATE: 2013/08/10	
REV	DESCRIPTION
B	

QUALITY SYMBOLS
$\nabla = 0$
$\nabla C = 0$

GENERAL TOLERANCES (UNLESS SPECIFIED)		
	mm	INCH
4 PLACES	$\pm .005$	$\pm .0005$
3 PLACES	$\pm .010$	$\pm .0010$
2 PLACES	$\pm .015$	$\pm .0015$
1 PLACE	$\pm .020$	$\pm .0020$
ANGULAR $\pm 5^\circ$		
DRAFT WHERE APPLICABLE MUST REMAIN WITHIN DIMENSIONS		

DIMENSION STYLE INCH/MM	
DRAWN BY	DATE
HRUIZ01	2013/07/22
CHECKED BY	DATE
HKNEELAN	2013/07/22
APPROVED BY	DATE
JFMURPHY	2013/08/10
MATERIAL NO.	
SEE TABLE	
SIZE	
A	

SCALE NTS	DESIGN UNITS INCH		THIRD ANGLE PROJECTION
TITLE			
MULTIPLE OUTLET BOX #12-3 SOW CORD 2647 PLUG AND 35002 GRIP			
	MOLEX INCORPORATED		
DOCUMENT NO. SD-130137-037			SHEET NO. 1 OF 1
CONTAINS INFORMATION THAT IS PROPRIETARY TO MOLEX AND SHOULD NOT BE USED WITHOUT WRITTEN PERMISSION			