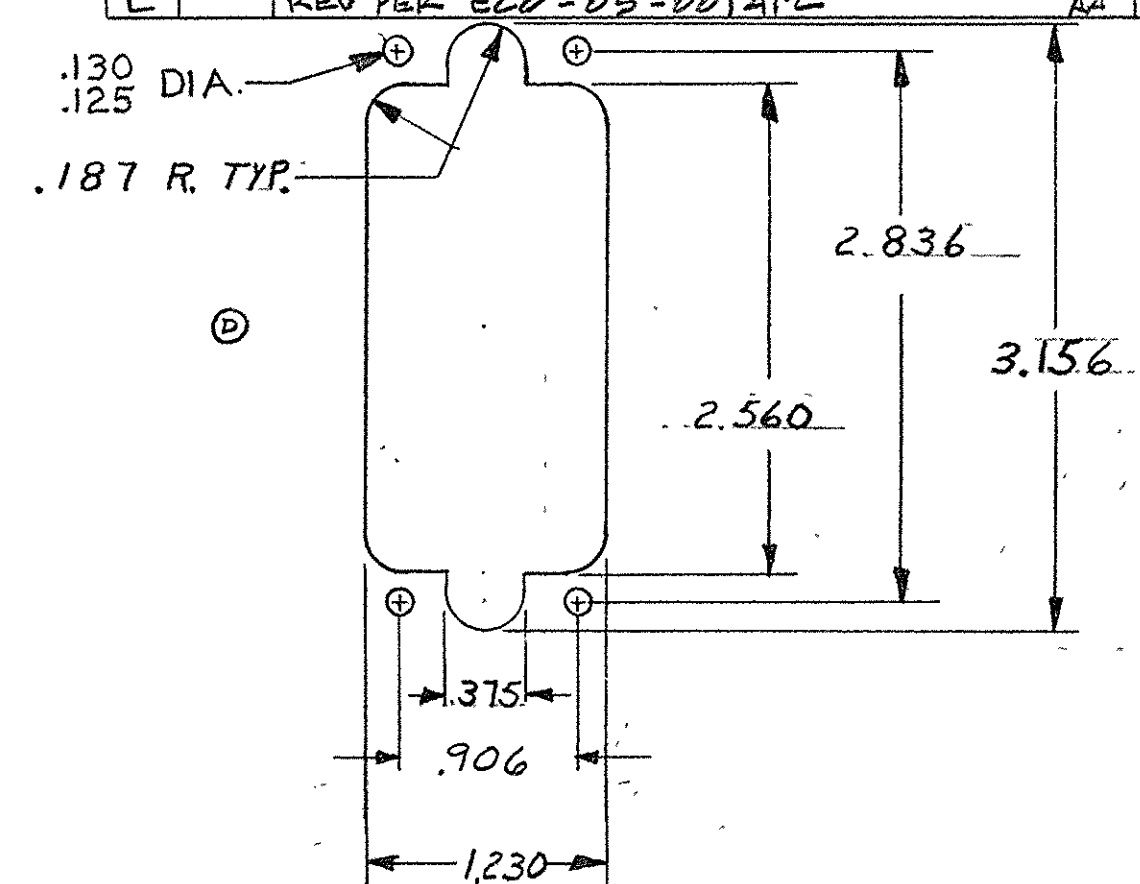
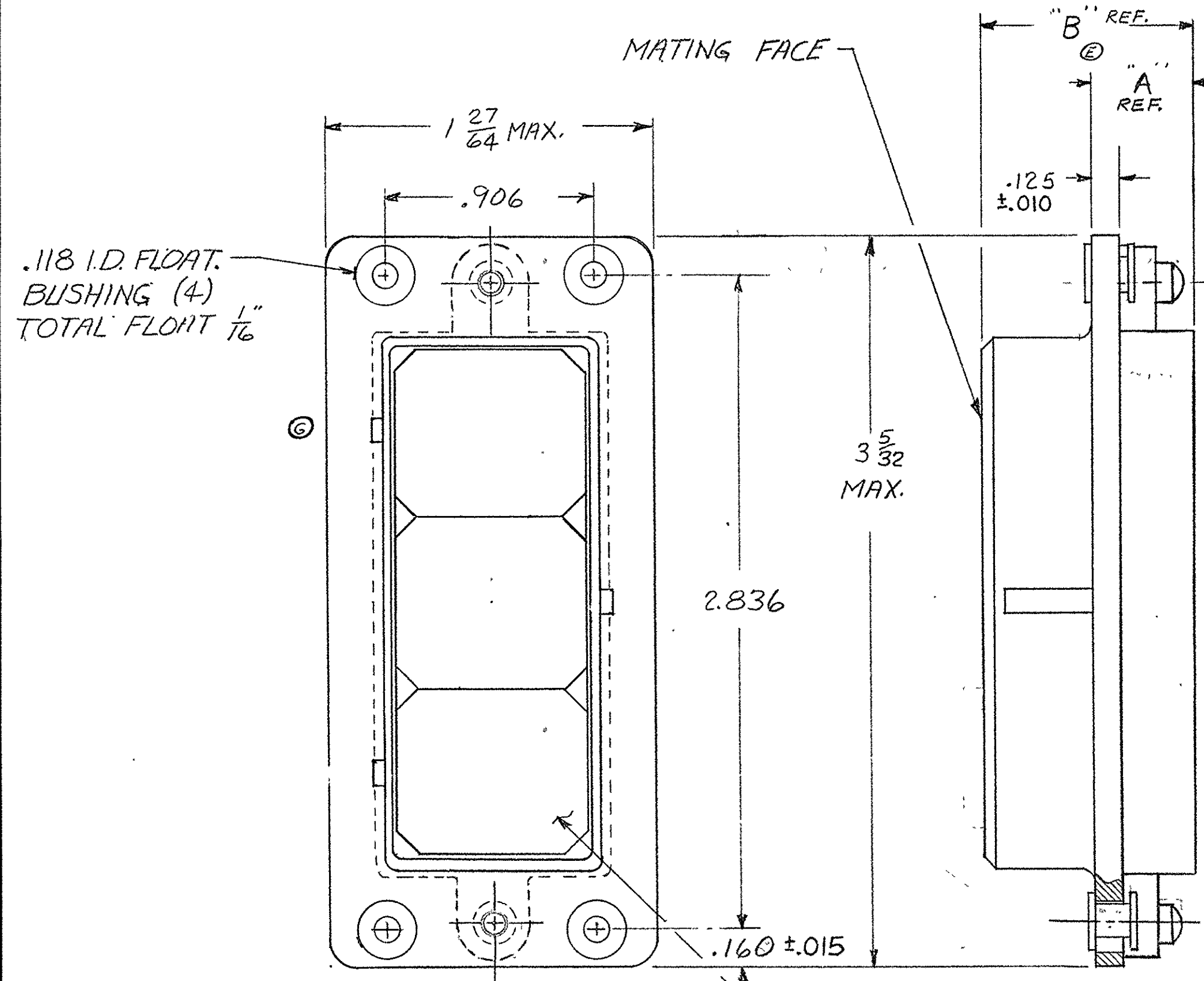


© 1963 BY AMP INCORPORATED. ALL RIGHTS RESERVED. AMP PRODUCTS COVERED BY PATENTS AND/OR PATENTS PENDING.

NUMBER 202283

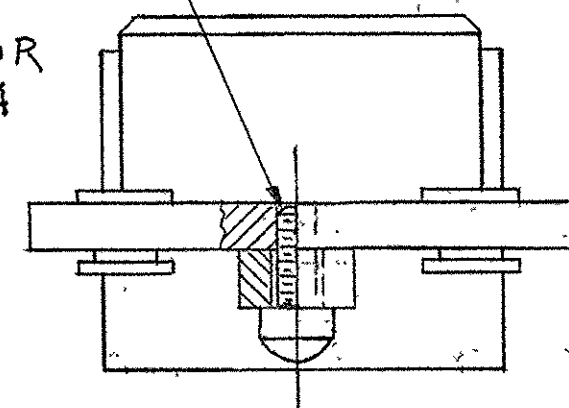
| REVISIONS |                       |            |       |
|-----------|-----------------------|------------|-------|
| SYM       | DESCRIPTION           | DATE       | APP   |
| M         | REV PER ECO-05-005359 | 11-14-05   | Py/DE |
| N         | REV PER ECO 16-001969 | CT 3-28-16 | DE    |

| REVISIONS |      |                               |          |          |  |
|-----------|------|-------------------------------|----------|----------|--|
| SYM       | ZONE | DESCRIPTION                   | DATE     | APPROVAL |  |
| O         |      | RELEASED                      | 9-11-63  | JK       |  |
| A         |      | REVISED U-415                 | 12-11-63 | JK       |  |
| B         |      | REVISED U-687                 | 2-26-64  | J.S.H.   |  |
| C         |      | REVISED V-116                 | 6-30-64  | RM       |  |
| D         |      | REVISED V-849                 | 1-27-65  | D.H.     |  |
| E         |      | REVISED W-524 W-421           | 8-2-65   | D.H.     |  |
| F         |      | REVISED W-777                 | 10-14-65 | D.H.     |  |
| G         |      | REVISED Y-296                 | 3-22-66  | D.H.     |  |
| G1        |      | REV. PER ECN D-644            | 9-17-75  | D.H.     |  |
| H         |      | REV. / ECN H-220              | 8-14-80  | D.H.     |  |
| J         |      | OBSOLETE - 2 PER ECN H-916    | 7-30-81  | A.H.H.   |  |
| K         |      | ADD - 5 & REV. PER ECN R-1135 | 3-21-85  | J.M.M.   |  |
| L         |      | REV PER ECO-03-001A12         | 03/05    | D.H.     |  |



|                          |      |       |                                                                                                                                                     |
|--------------------------|------|-------|-----------------------------------------------------------------------------------------------------------------------------------------------------|
| 5-202283-4               | .886 | 1.416 | FINISH: PLATED ELECTROLESS NICKEL PER SAE-AMS-C-2607A<br>-000400 - .000800 THK (NO INTENTIONAL ADDITIONS<br>OF LEAD OR CADMIUM PER DFE STD 230-700) |
| 5-202283-3               | .480 | 1.010 | FINISH: PLATED ELECTROLESS NICKEL PER SAE-AMS-C-2607A<br>-000400 - .000800 THK (NO INTENTIONAL ADDITIONS<br>OF LEAD OR CADMIUM PER DFE STD 230-700) |
| ASSY. NO.                | "A"  | "B"   | FINISH                                                                                                                                              |
| 202283-1                 | .480 | 1.010 | ZINC PLATE PER ASTM-B-689<br>TYPE II CLASS 3 COLORLESS<br>SUPPLEMENTARY CHROMATE (D)                                                                |
| 202283-2                 | .480 | 1.010 | OLIVE DRAB ZINC PLATE PER<br>ASTM-B-635 CLASS 3 TYPE II (D)                                                                                         |
| SUPERSEDED BY 5-202283-3 |      |       | 202283-3 .480 1.010 FINISH SAME AS -1                                                                                                               |
| SUPERSEDED BY 5-202283-4 |      |       | 202283-4 .886 1.416 FINISH SAME AS -1                                                                                                               |
| 202283-5                 |      |       | .480 1.010 CADMIUM PLATE W/YELLOW CHROMATE CONVERSION<br>PER QQ-P-416 TYPE II, CLASS 3                                                              |

ZINC PLATED STEEL SCREW (2)  
PHILLIPS HEAD FOR  
-1 AND -2 ONLY  
FILLISTER HEAD FOR  
-3, -4, 5-3 & 5-4



MODULE BLOCK REF.

OBSOLETE

| AMP INFO                                                                |                 | QTY REQD   | NOMENCLATURE OR DESCRIPTION | PART OR IDENTIFYING NO |                                                  |              |
|-------------------------------------------------------------------------|-----------------|------------|-----------------------------|------------------------|--------------------------------------------------|--------------|
| LOC                                                                     | PRINT DIST      |            |                             |                        |                                                  |              |
| R                                                                       | 39              | M          |                             |                        |                                                  |              |
| LIST OF MATERIALS OR PARTS LIST                                         |                 |            |                             |                        |                                                  |              |
| UNLESS OTHERWISE SPECIFIED<br>DIMENSIONS ARE IN INCHES<br>TOLERANCES ON |                 |            | SIGNATURE                   | DATE                   | <br>AMP INCORPORATED<br>HARRISBURG, PENNSYLVANIA |              |
| FRACTIONS ± 1/64                                                        | DECIMALS ± .005 | ANGLES ± # | DR <i>D. Miller</i>         | 2-26-63                |                                                  |              |
| MATERIAL SHELL - DIE CAST ALUMINUM                                      |                 |            | CHK <i>J. Kaufman</i>       | 4-12-63                | NAME<br>PLUG ASSEMBLY, MODULE<br>@ SERIES "G"    |              |
| HEAT TREAT                                                              |                 |            | DSGN ENGR <i>J. Kaufman</i> | 3-1-63                 |                                                  |              |
| FINISH SEE TABLE                                                        |                 |            | DSGN APPD                   | OTHER APPD             | CODE IDENT NO                                    | SIZE         |
|                                                                         |                 |            |                             |                        | 00779                                            | C            |
|                                                                         |                 |            |                             |                        | NUMBER                                           | 202283       |
|                                                                         |                 |            |                             |                        | REV                                              | N            |
|                                                                         |                 |            |                             |                        | SCALE                                            | 2-1          |
|                                                                         |                 |            |                             |                        | WT                                               | CALC         |
|                                                                         |                 |            |                             |                        | ACTUAL                                           | SHEET 1 OF 1 |

REF 5012-9 REV D