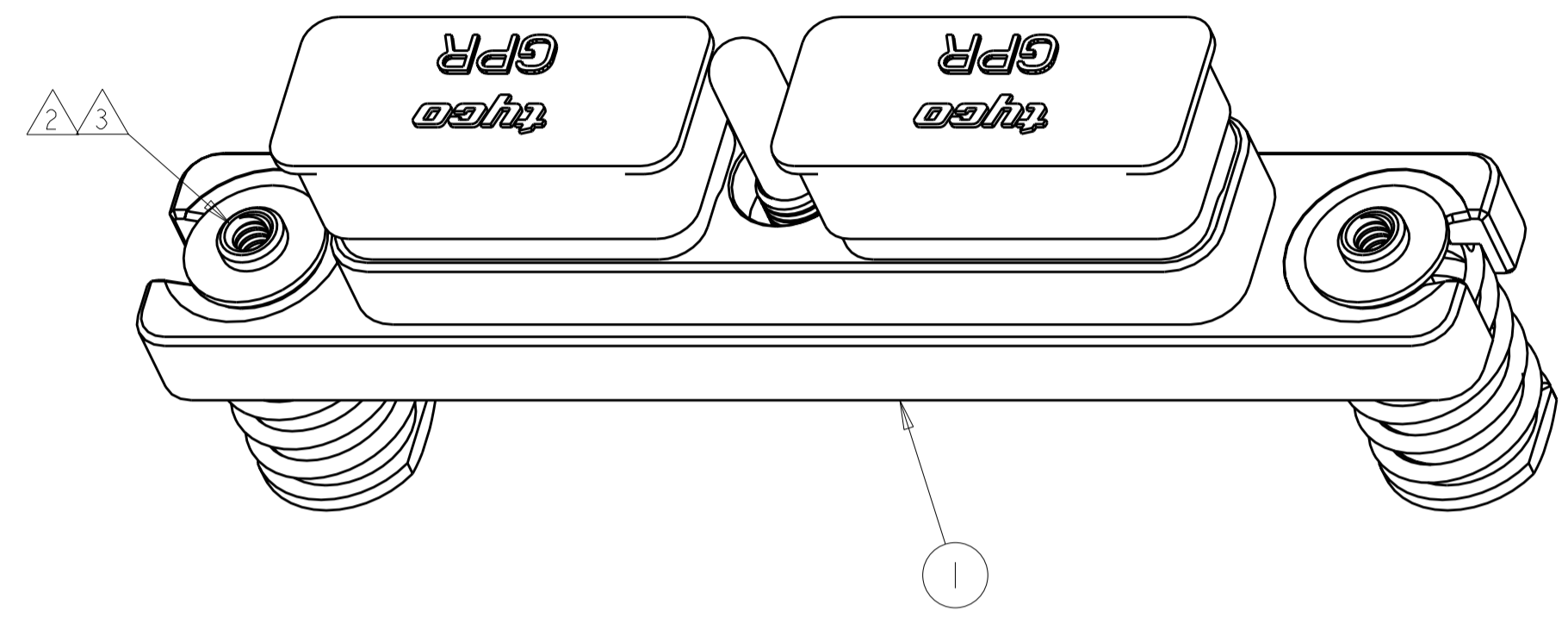
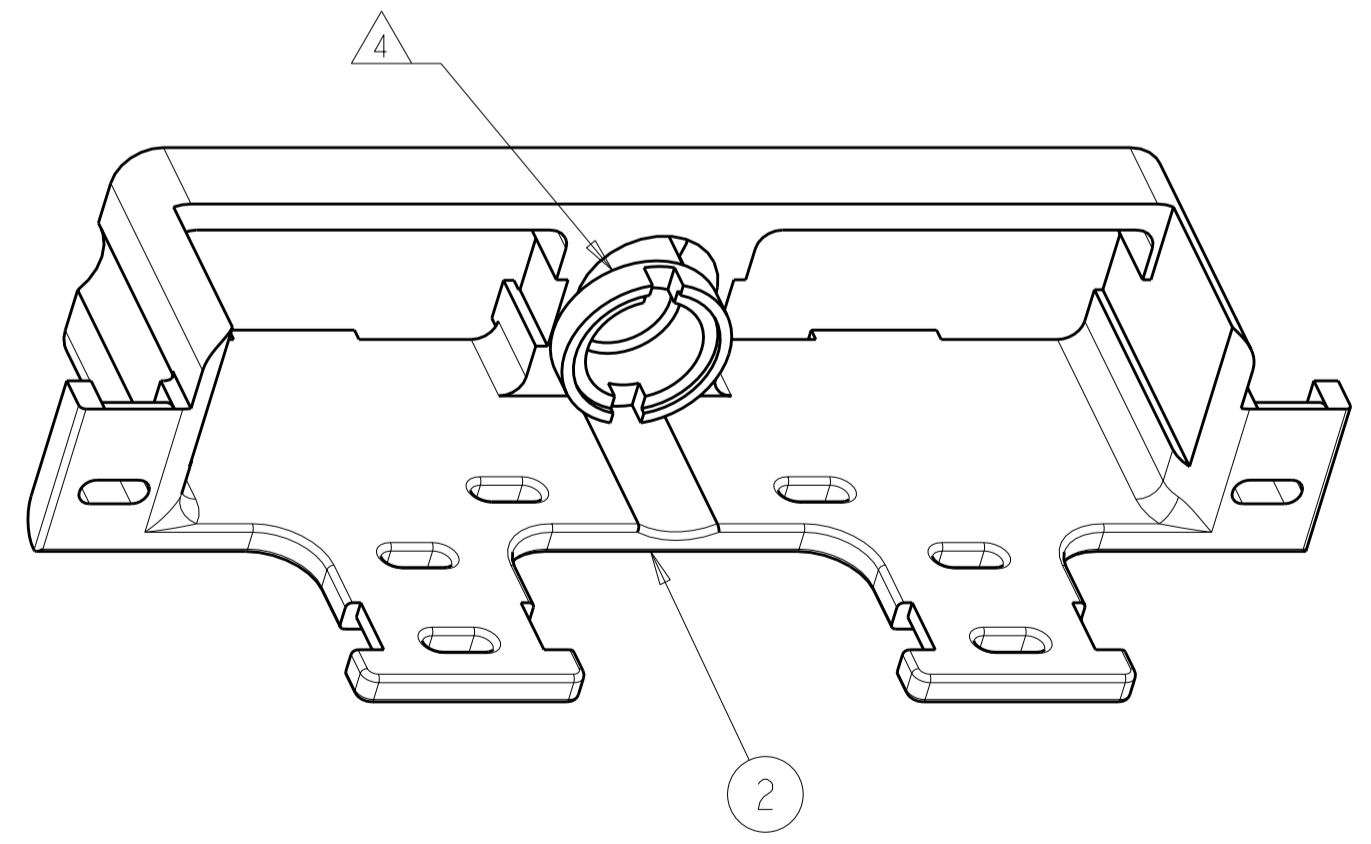
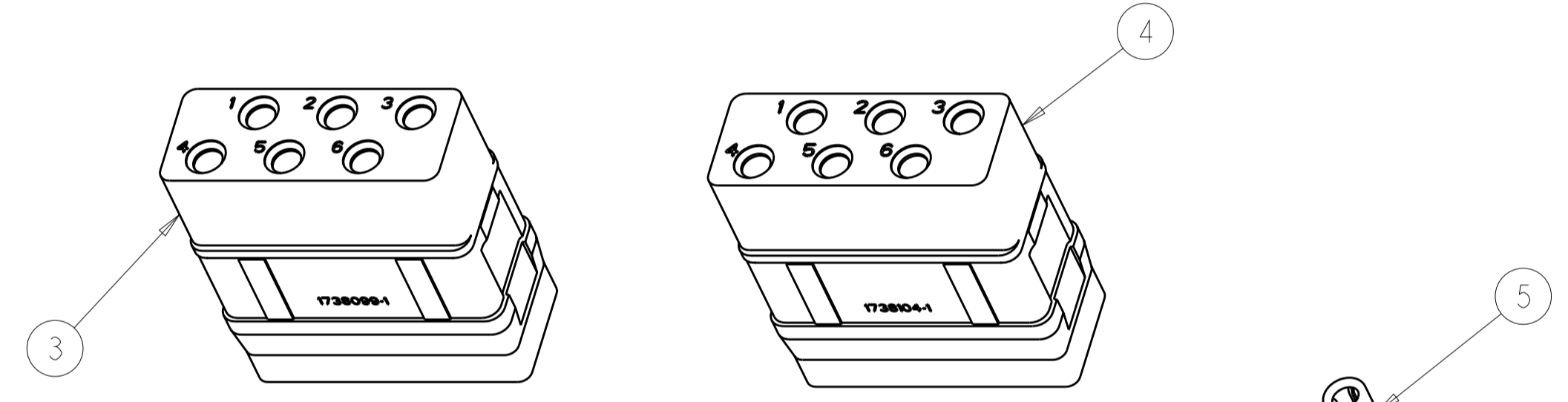


THIS DRAWING IS UNPUBLISHED. RELEASED FOR PUBLICATION 20
 © COPYRIGHT 20 BY TYCO ELECTRONICS CORPORATION. ALL RIGHTS RESERVED.

LOC		DIST		REVISIONS			
P	LTR	DESCRIPTION	DATE	DWN	APVD		
-	-	A	RELEASED	01JUN2009	CT	KH	



1. SEE INDIVIDUAL CUSTOMER DRAWINGS FOR MATERIALS, FINISHES PANEL CUTOUTS ETC.
2. 6-32 SCREWS ARE REQUIRED FOR PANEL MOUNTING (NOT INCLUDED). SCREW HEAD DIAMETER: 8.5mm MAX RECOMMENDED TORQUE: 1.3 N-m [11.5 in-lb] MIN.
3. 6-32 THREADED HOLES ARE SELF-LOCKING, HAVING THE SPIRALOCK® THREAD FORM. SPIRALOCK® IS A REGISTERED TRADEMARK OF SPIRALOCK CORPORATION.
4. A SPANNER WRENCH TOOL, TE P/N 1738220-1 (WITH 1/4-in. ADAPTER) OR 1738221-1 (WITH T-HANDLE) IS USED TO LOCK THE RETAINING NUT TO THE JACKSCREW OF THE CORRESPONDING GPR CONNECTOR.
5. COMPONENTS ARE SHIPPED IN KIT FORM (UNASSEMBLED).



THIS PRINT IS
PRELIMINARY
 UNQUALIFIED PRODUCT
 CONTACT PRODUCT ENGINEERING
 BEFORE USING THIS PRINT

12	1738018-1	SOCKET CONTACT, SIZE 12, CRIMP	5
1	1738104-1	SOCKET INSERT, ARR 06, KEY B	4
1	1738099-1	SOCKET INSERT, ARR 06, KEY A	3
1	1738313-1	STRAIN RELIEF KIT	2
1	1877070-1	PLUG SHELL ASSY, GAIN	1
QTY	PART NO.	DESCRIPTION	ITEM NO.

<small>THIS DRAWING IS A CONTROLLED DOCUMENT FOR TYCO ELECTRONICS CORPORATION. IT IS SUBJECT TO CHANGE AND THE CONTROLLING ENGINEERING ORGANIZATION SHOULD BE CONTACTED FOR THE LATEST REVISION.</small>		DWN C.C. THOMAS 01JUN2009 CHK K. HOGAN 01JUN2009 APVD K. HOGAN 01JUN2009	Tyco Electronics Tyco Electronics Harrisburg, PA 17105-3608
DIMENSIONS: mm 	TOLERANCES UNLESS OTHERWISE SPECIFIED: 0 PLC ± 1 PLC ±0.2 2 PLC ± 3 PLC ± 4 PLC ± ANGLES ± FINISH	PRODUCT SPEC APPLICATION SPEC WEIGHT CUSTOMER DRAWING	NAME KIT, GPR PLUG ASSY, GAIN, 06/06 SIZE A200779 CAGE CODE C-2101196 DRAWING NO. 2101196 RESTRICTED TO -
AMP 1471-9 REV 31MAR2000		SCALE: 2:1	SHEET 1 OF 1 REV A