

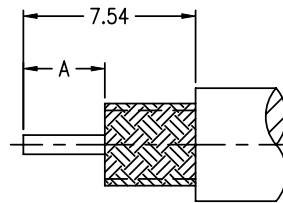
NOTES:

1. MATERIALS AND FINISHES
 BODY - BRASS, NICKEL PLATING
 CONTACT - BERYLLIUM COPPER, SILVER PLATING
 INSULATOR - PTFE
2. ELECTRICAL:
 A. IMPEDANCE: 50 OHM
 B. FREQUENCY RANGE: DC 0-4 GHz
 D. DIELECTRIC WITHSTANDING VOLTAGE: 1500 VRMS, MIN.
3. MECHANICAL:
 A. DURABILITY: 500 CYCLES MIN.
 B. TEMPERATURE RANGE: - 65°C to +165°C
4. USED WITH CABLES : 59B/U, 62A/U, 71B/U, 140/U, 210/U
5. CONTACT PIN SOLDER TO CABLE
6. INSULATOR IS USED WITH RG-62A/U OR RG-71B/U CABLES ONLY.

THIRD ANGLE PROJ.

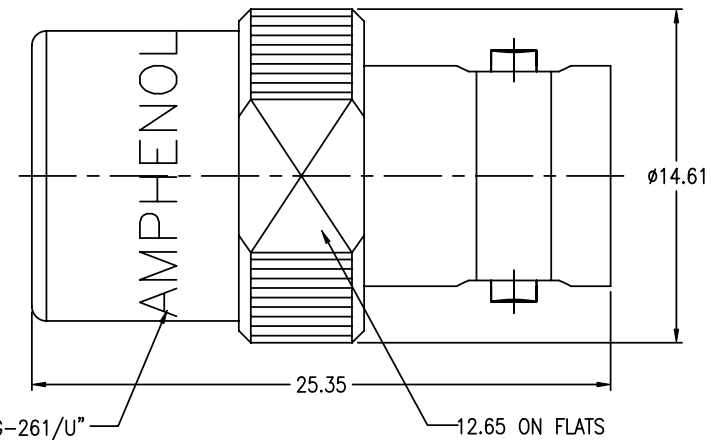
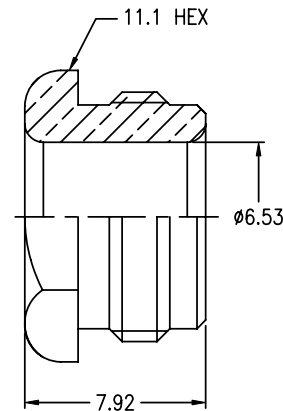
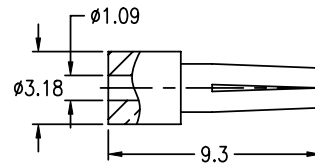
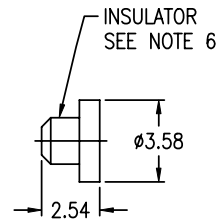
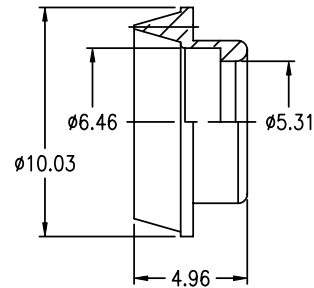
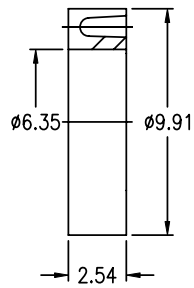
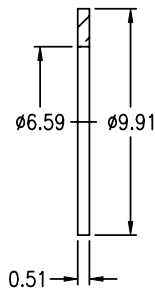
REVISIONS

REV	DESCRIPTION	DATE	ECO	APPR
S	REDRAWN TO UPDATE FORMAT	08-Dec-08	47204	SH
T	STAMP "AMPHENOL" WAS "74868"\RD-DM11120601R3	26-Dec-11	48842	SH



CABLE	A
RG-59 B/U	2.78
RG-62 A/U	3.57
RG-71 B/U	

RECOMMENDED
CABLE STRIPPING DIM'S



CUSTOMER OUTLINE DRAWING

ALL OTHER SHEETS ARE FOR INTERNAL USE ONLY

UNLESS OTHERWISE SPECIFIED, DIMENSIONS ARE IN METRIC AND TOLERANCES ARE:
 0.5 - 6mm ±0.1mm 6 - 30mm ±0.2mm 30 - 120mm ± 0.3mm ANGLES ±1°

NOTICE - These drawings, specifications, or other data (1) are, and remain the property of Amphenol Corp. (2) must be returned upon request; and (3) are confidential and not to be disclosed to any person other than those to whom they are given by Amphenol Corp. The furnishing of these drawings, specifications, or other data by Amphenol Corp., or to any other person to anyone for any purpose is not to be regarded by implication or otherwise in any manner licensing, granting rights or permitting such holder or any other person to manufacture, use or sell any product, process or design, patented or otherwise, that may in any way be related to or disclosed by said drawings, specifications, or other data.

MATERIAL	DRAWN	DATE	TITLE			Amphenol RF Danbury CT USA, Tainan Taiwan, Shenzhen China www.amphenolrf.com		
	R.MAO	12-Dec-11						
REFERENCE	ENGINEER	DATE	BNC JACK UG-261/U			DRAWING NO. 31-15		
	N.CAO	29-Jul-03						
FINISH	APPROVED	DATE	SCALE: 3/1	SHEET	2 OF 2	ITEM NO. 31-15 PART NO. 31-15		
	S.HSIEH	12-Dec-11	DWG SIZE	CODE ID	REV			
	F:\DWG\CNPD\31\15-TSZ		B	74868	T			