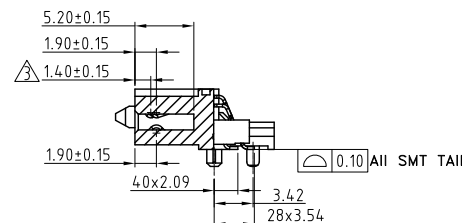
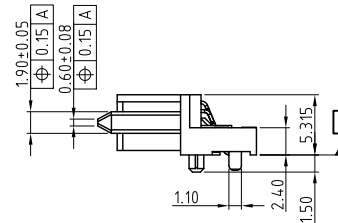
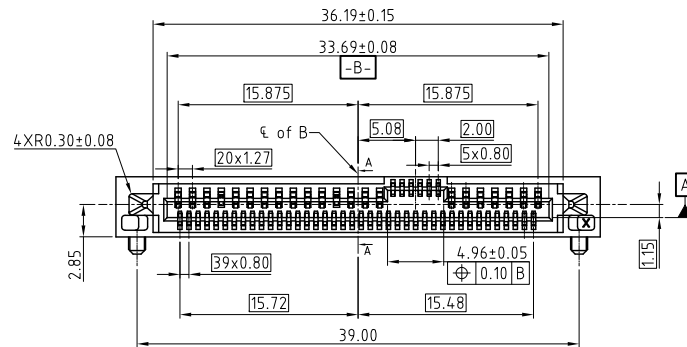
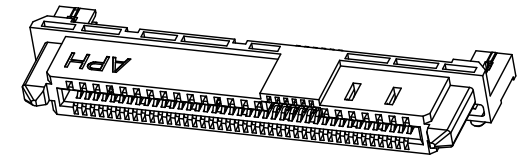
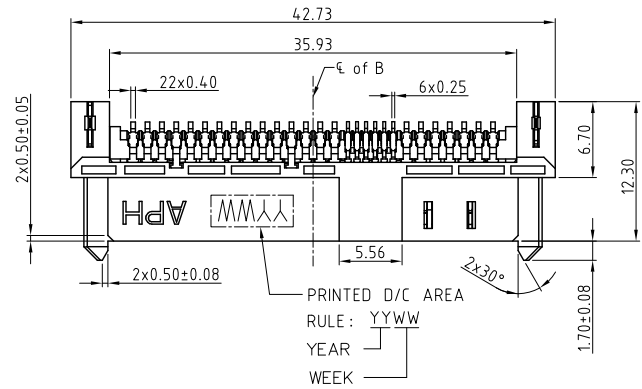


This document is the property of Amphenol Corporation and is delivered on the express condition that it is not to be disclosed, reproduced or used, in whole or in part, for manufacture or sale by anyone other than Amphenol Corporation without its prior consent, & that no right is granted to disclose or to use any information in this document.

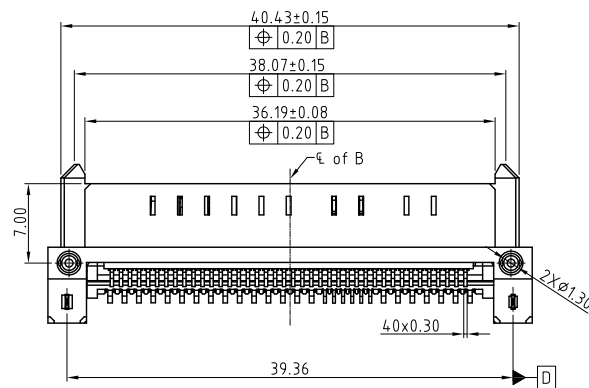
# CUSTOMER DRAWING

## REVISIONS

SYM	ECN	DESCRIPTION	DATE	APPROVED
1	HK7902	FIRST RELEASE	08/28/18	IP
2	HK--	ADDED DIMENSIONS BY CUSTOMER'S REQUEST	01/28/19	IP



SECTION A-A



### NOTES

- MATERIAL
  - HOUSING: HIGH TEMPERATURE THERMOPLASTIC, UL94V-0, COLOR:BLACK.
  - CONTACTS : PHOSPHOR BRONZE  
PLATING: REFER TO P/N SYSTEM ON MATING AREA.  
1.27um MIN NICKEL UNDER PLATED OVERALL.  
2.54um MIN PURE MATTE TIN ON SOLDER TAILS.
  - SOLDER CLIPS: COPPER ALLOY  
2.54um MIN PURE MATTE TIN OVER 1.27um MIN NICKEL.
- GENERAL SPECIFICATION
  - CURRENT RATING: 1.5A/PER PIN (POWER SECTION).
  - CONTACT RESISTANCE: 30mΩ MAX (INITIAL).
  - INSULATOR RESISTANCE: 1000MΩ MIN.
  - DIELECTRIC WITHSTANDING VOLTAGE: 500 VAC
  - OPERATION TEMPERATURE: 0°C~+55°C
- PREMATING AT P4 & P12
- SUPPORT PCIe GEN4 AND SAS3.0
- DIMENSIONING SHALL BE INTERPRETED PER ASME Y14.5M 1994.
- MATERIAL SHOULD BE FULFILLED AMPHENOL SPEC.# S-SN-002, FOR HALOGEN FREE PRODUCTS, ALSO NEED TO MEET S-SN-004.
- ORDER P/N SYSTEM: PSAS4F213001XXX

MATING AREA PLATING      PACKING STYLE  
 1- 0.76um MIN Au.            NIL- TRAY  
 2- 0.38um MIN Au.            TR- TAPE AND REEL  
 3- Gold FLASH



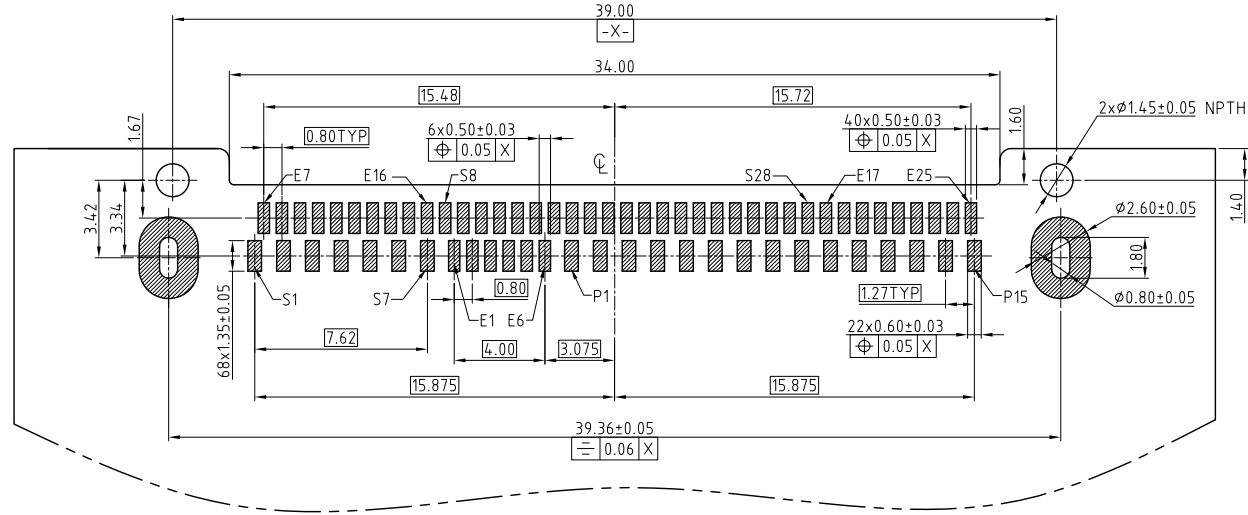
UNLESS OTHERWISE SPECIFIED TOLERANCES		APPROVAL		DATE	Amphenol Amphenol East Asia Limited
		DRAWN	Jackie.Tan	01/28/19	
.X	+/-	CHECKED	Xiang.Wang	01/28/19	
.XX	+/-	CHECKED			
.XXX	+/-				
FRACTIONS	+/-				
ANGLES	+/-				
FOR MATERIALS AND FINISHES SEE NOTES		DRAWING FILE :			TITLE
REMOVE SHARP EDGES		Y:\DRAWING\PSAS\PSAS4F213001XXX-2			PCle/SAS R/A SMT RECEPTACLE
DIMENSIONS		ANGLE OF PROJECTION		SIZE	DRAWING NO.
U.S.	INCHES			A3	PSAS4F213001XXX
(METRIC)	(MM)	SCALE	NONE	SHEET	1 OF 2
				REV.	2

This document is the property of Amphenol Corporation and is delivered on the express condition that it is not to be disclosed, reproduced or used, in whole or in part, for manufacture or sale by anyone other than Amphenol Corporation without its prior consent, & that no right is granted to disclose or to use any information in this document.

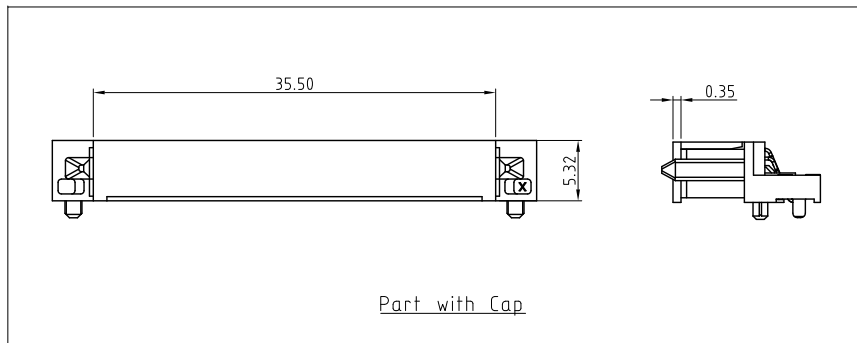
# CUSTOMER DRAWING

## REVISIONS

SYM	ECN	DESCRIPTION	DATE	APPROVED
		REFER TO SHEET 1		



RECOMMENDED PCB LAYOUT  
GENERAL TOLERANCE ±0.05



Part with Cap



UNLESS OTHERWISE SPECIFIED TOLERANCES		APPROVAL		DATE	Amphenol Amphenol East Asia Limited		
	U.S.	METRIC	DRAWN	01/28/19			
.X	+/-	0.50	Jackie.Tan				
.XX	+/-	0.25	Xiang.Wang	01/28/19			
.XXX	+/-	0.20	CHECKED				
FRACTIONS +/-			DRAWING FILE :		TITLE		
ANGLES +/-			Y:\DRAWING\PSAS\PSAS4F213001XXX-2		PCle/SAS R/A SMT RECEPTACLE		
FOR MATERIALS AND FINISHES SEE NOTES			REMOVE SHARP EDGES	ANGLE OF PROJECTION	SIZE	DRAWING NO.	REV.
			DIMENSIONS		A3	PSAS4F213001XXX	2
	U.S. INCHES	(METRIC) (MM)			SCALE	NONE	SHEET 2 OF 2