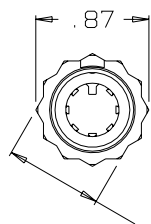


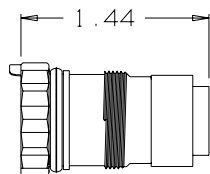
# **B AJ-107XL**

## **NOTES:**

- 1) THIS PART MATES WITH AP-107XL SEVEN CONDUCTOR WATERPROOF AUDIO PLUG.
- 2) CONFIGURATION IS FOR 3/4"-12 PT SOCKET WRENCH



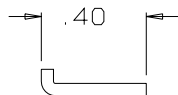
.75 ACROSS FLATS  
(SEE NOTE 2)



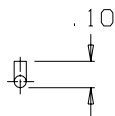
**AJ-107-29  
JACK BODY ASSEMBLY  
(1 REQ'D)**



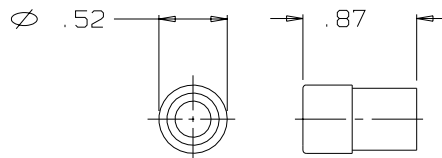
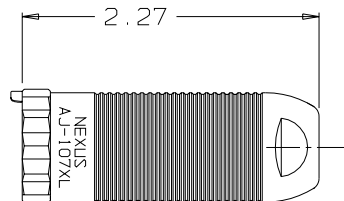
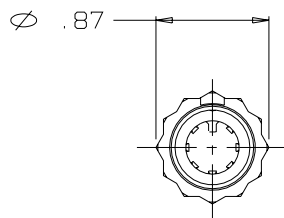
**CABLE HOLDER  
AJ-107-3GXL  
(1 REQ'D)**



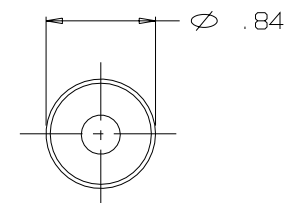
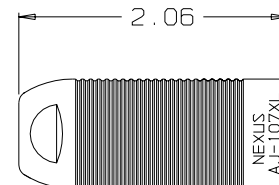
**AP-107-9  
RETAINER PIN  
SCALE 2:1  
(1 REQ'D)**



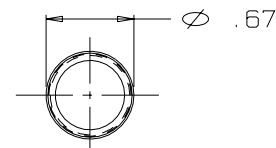
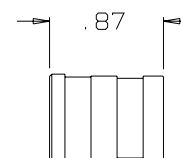
**AP-107-27  
CABLE SEAL ASSEMBLY  
(1 REQ'D)**



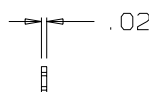
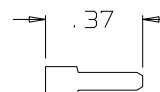
**AP-107-25  
SHIM  
SCALE 2:1  
(1 REQ'D)**



**AJ-107-15XL  
SHELL  
(1 REQ'D)**



**AP-107-4  
SLEEVE  
(1 REQ'D)**



THIS DOCUMENT CONTAINS PROPRIETARY INFORMATION OF NEXUS, INCORPORATED AND SUCH INFORMATION MAY NOT BE DISCLOSED TO OTHERS FOR ANY PURPOSE OR USED FOR ANY PURPOSE WITHOUT THE WRITTEN CONSENT OF NEXUS.

DWN. BY	IDH	DATE	1/22/86	MATERIAL	SEE FIELD OF DRAWING	
CHECKED BY	RWF	DATE	2/20/86	FINISH	N/A	
APPR. BY		DATE		WEIGHT	—	SCALE 1:1
				TITLE	SEVEN CONDUCTOR WATERPROOF AUDIO JACK	
				DO NOT SCALE DWG.	SHEET 1 OF 1	

B	REDRAWN ON CAD	472	2/17/04	EW
A	VIEWS CHANGED		8/12/88	
LET.	REVISION	CN #	DATE	CHK.

UNLESS OTHERWISE SPECIFIED  
DIMENSIONS ARE IN INCHES  
TOLERANCES ON  
.XX .XXX ANGLES  
±.01 ±.003 ±.5°

**NEXUS**  
STAMFORD, CONN  
SIZE **B** DWG. NO.  
**AJ-107XL**