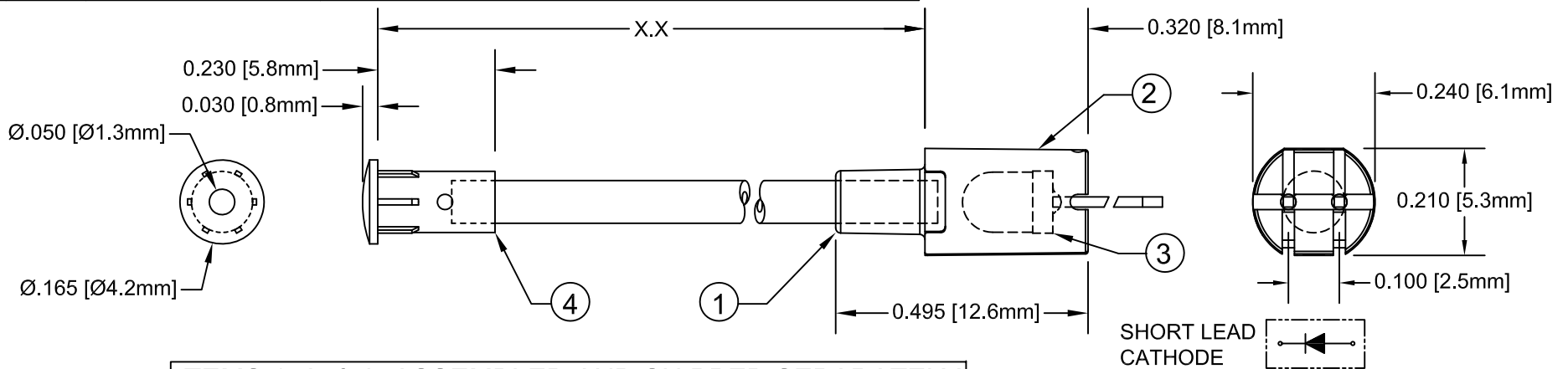
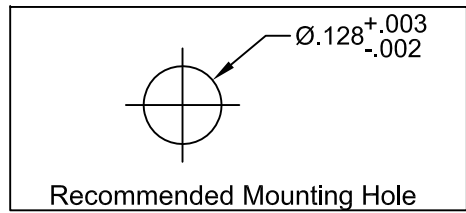


| ITEM | Q'TY | PART NUMBER | PART DESCRIPTION |
|------|------|-------------|--|
| 1 | 1 | PML3-1 | Bushing, FLeXible Light Pipe Adapter |
| 2 | 1 | PML3-2 | Body, Flexible Light Pipe Adapter |
| 3 | 1 | 3IR-940 | T-1 (3mm) Infrared LED |
| 4 | 1 | LC-IR-XX.X | IR Lens Cap / FLPS1022-X.XXX Assembly (X.XXX, Cut Length in Inches) |

| REV. | DESCRIPTION | DATE | APPROVED |
|------|------------------------------|----------|----------|
| A | Engineering Release. | 05/20/09 | T. Y. |
| B | Added Polarity Diagram. | 03/22/10 | T. Y. |
| C | Updated Fiber To FLPS In BOM | 11/16/12 | T. Y. |

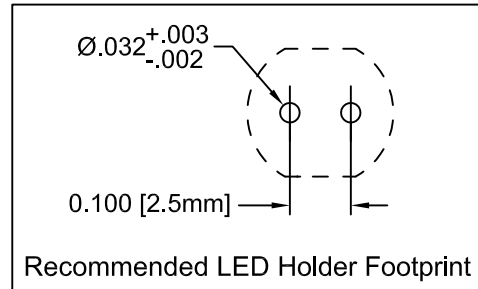


ITEMS 1, 2, & 3 ASSEMBLED AND SHIPPED SEPARATELY



| " X.X " * | Tolerance |
|------------------|-----------|
| 1.0" ~ 16.0" | ±0.050" |
| 16.1" ~ 40.0" | ±0.15" |
| 40.1" ~ 80.0" | ±0.30" |
| 80.1" ~ 3,940.0" | ±0.5% |

* Available in 0.1" increments only



| LED OPTICAL / ELECTRICAL CHARACTERISTICS | | | | | |
|--|-----------------------|---------|---------|---------|-------|
| Parameter | Test Condition | Minimum | Typical | Maximum | Units |
| Radiant Intensity | I _F = 50mA | 11.78 | 33.4 | - | mW/sr |
| Forward Voltage | I _F = 50mA | - | 1.25 | 1.5 | V |
| Peak Wavelength | I _F = 20mA | - | 940 | - | nm |
| Spectral Line-Half Width | I _F = 20mA | - | 50 | - | nm |
| Viewing Angle | I _F = 20mA | - | 50 | - | deg |

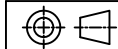
Lens Appearance: Blue Transparent

| LED ABSOLUTE MAXIMUM RATINGS | | |
|------------------------------|----------------|------|
| Parameter | Maximum Rating | Unit |
| Power Dissipation | 100 | mW |
| Continuous Forward Current | 100 | mA |
| Peak Forward Current | 1.0 | A |
| Reverse Voltage | 5 | V |
| Reverse Current | 10 | uA |

ABSOLUTE TEMPERATURE RATINGS (Ta=25°C)

OPERATING TEMPERATURE RANGE _____ -25° C - 85° C
 STORAGE TEMPERATURE _____ -30° C - 100° C
 LEAD SOLDERING TEMPERATURE(1/16" FROM BODY) _____ 260° C FOR 5 SECONDS

| STANDARD TOLERANCE (UNLESS OTHERWISE SPECIFIED) | |
|---|---------|
| DECIMALS | ANGULAR |
| .X ±.1 | X° ± 1° |
| .XX ±.02 | |
| .XXX ±.010 | |



BIVAR[®]

4 THOMAS, IRVINE, CA. 92618
 TEL: (949) 951-8808 FAX: (949) 951-3974

TITLE: FLEXIBLE LIGHT-PIPE LED ADAPTER ASSY, IR

DESIGNED: **Raffy Paje**
 CHECKED: **F. Jensen**
 DATE: **05/20/09**
 DATE: **05/20/09**

PART NO: FLPIRVXX.XIR940
CAGE CODE : 32559 **SHEET #** 1 **OF** 1
 REVISION: **C**
 CAD GENERATED DOCUMENT. DO NOT MEASURE DRAWING.