

A quick reliable solution for ground, neutral or low voltage distribution applications. The Busbar System consists of a busbar, busbar supports, and screw clamp terminals for terminating wires

NEB 10 (10 x 3 mm) and NEB 6 (6 x 6 mm), tin plated copper busbars are available in one meter lengths. Both have a 140A current carrying capacity.

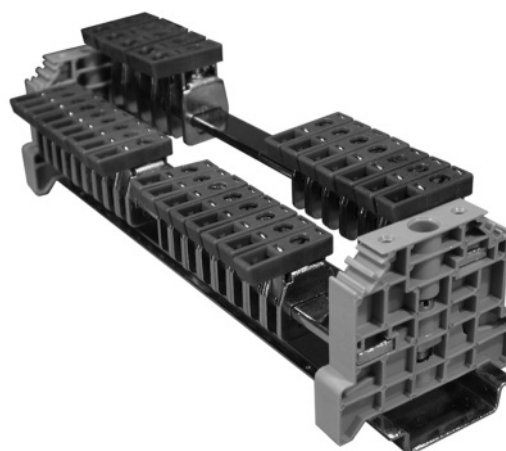
NES plastic support with fixing screws for holding 10 x 3 & 6 x 6 busbar makes placing of busbar an easy task. Busbars up to 200 mm length should be supported at ends by two busbar supports. For busbars exceeding 200 mm length, it is recommended to provide intermediate busbar support. Easy to operate CENC clamp secures wire to the busbar.



CENC4			CENC16			CENC35		
								
7.5 mm			9.8 mm			14.5 mm		
30 x 23.3 mm			36 x 23.3 mm			45 x 27.3 mm		
12 mm			16 mm			16 mm		
Polyamide 6.6			Polyamide 6.6			Polyamide 6.6		
1 screw clamp connection			1 screw clamp connection			1 screw clamp connection		
 C US	 C	 US E220514	 C US	 C	 US E220514	 C US	 C	 US E220514
22-10 AWG	0.5-6 sq.mm	22-12 AWG	10-4 AWG	6-16 sq.mm	10-6 AWG	8-2 AWG	10-35 sq.mm	8-2 AWG
35 A	41 A		80 A	76 A		125 A	125 A	
14 lb-in	0.8 Nm	14 lb-in	14 lb-in	2.0 Nm	17.5 lb-in	25 lb-in	2.5 Nm	25 lb-in
 RoHS Compliant			 RoHS Compliant			 RoHS Compliant		
 CE			 CE			 CE		
 IEC			 IEC			 IEC		

Terminal Block**

	Cat. No.	Std. Pk.	Cat. No.	Std. Pk.	Cat. No.	Std. Pk.
CENC4		50	CENC16	50	CENC35	50
Busbar (10 x 3 mm)	NEB10	1 m	NEB10	1 m	NEB10	1 m
Busbar (6 x 6 mm)	NEB6	1 m	NEB6	1 m	NEB6	1 m
Plastic Support with Fixing Screw	NES	50	NES	50	NES	50
End Clamp/Bus bar support for rail mounting	CA202	50	CA202	50	CA202	50
Marking Tags (MT Type)	MT5	100	MT6	100	MT6	100



* 140A current carrying capacity of busbar should be taken into account while connecting loads.

** Consult for other available colors.