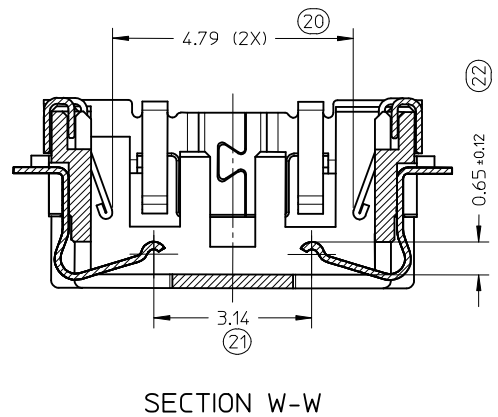
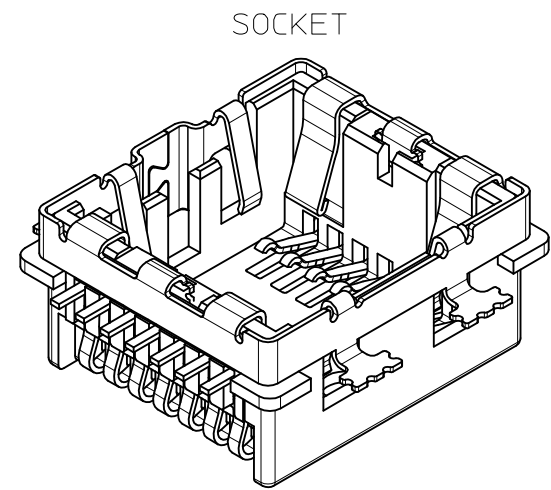
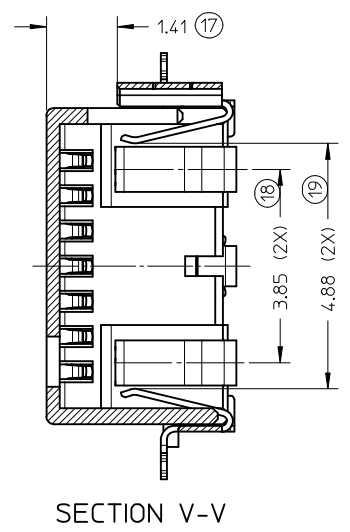
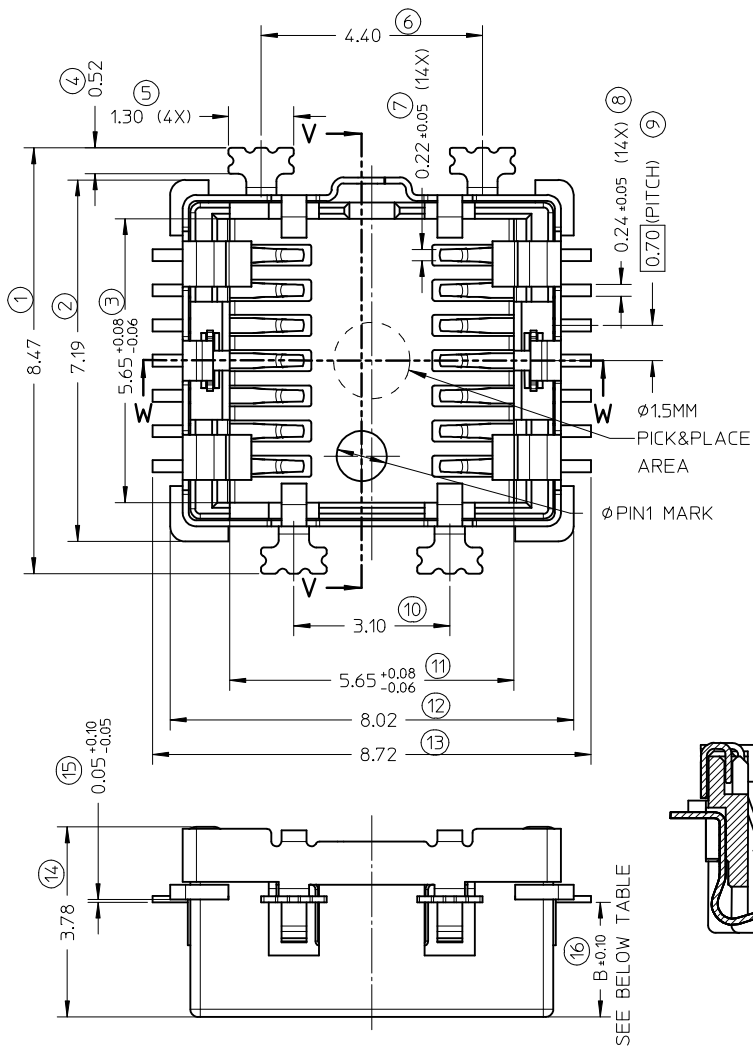


10 9 8 7 6 5 4 3 2 1



- NOTES:
- MATERIALS
HOUSING: HIGH TEMPERATURE PLASTIC, BLACK, UL94 V-0
TERMINAL: COPPER ALLOY.
SHELL: STAINLESS STEEL
 - FINISH
TERMINAL: 2-4 MICROMETER NICKEL UNDERPLATING OVERALL,
GOLD PLATING 0.3 MIN MICROMETER ON CONTACT AREA,
GOLD FLASH PLATING ON SOLDER AREA.
SHELL: 0.8 MIN MIROMETER NICKEL PLATING OVERALL
1.5 MIN MICROMETER MATTE TIN PLATING OVERALL.
 - COPLANARITY 0.08MM FOR ALL SOLDER TAILS. (23)
 - PRODUCT SPECIFICATION: PS-105200-001
 - PACKAGING: TAPE&REEL

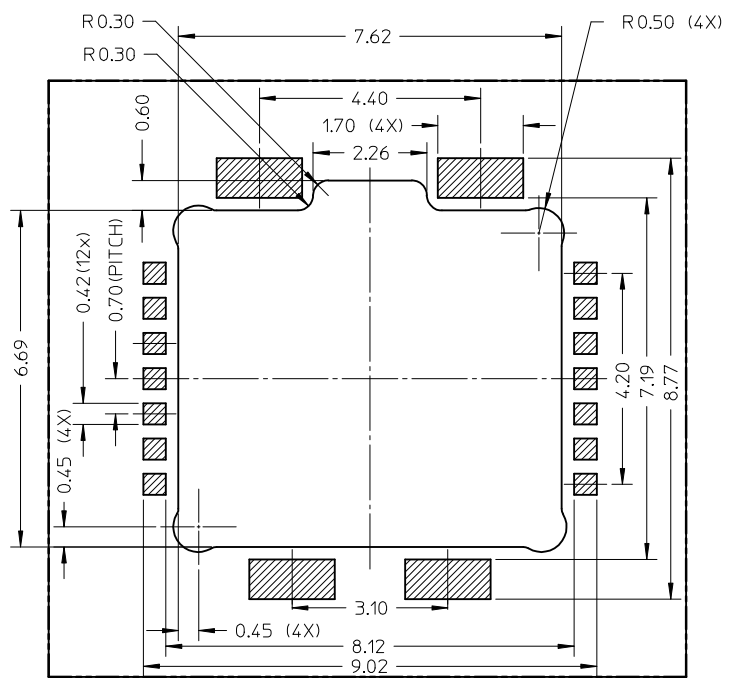
F
E
D
C
B
A

F
E
D
C
B
A

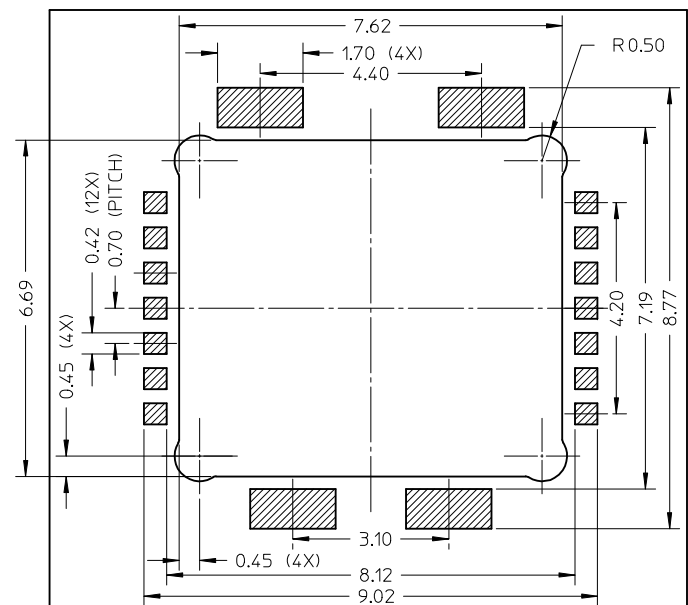
1052000005	1.40		
1052000004	1.60	1052000009	0.60
1052000003	1.80	1052000008	0.75
1052000002	2.00	1052000007	1.00
1052000001	2.28	1052000006	1.20
PRODUCT NO.	DIM B	PRODUCT NO.	DIM B

RELEASED EC NO: SH2013-0196 DRWN:WJHUO 2012/12/18 CHKD: APPR:AYIN 2013/01/08 REV A	QUALITY SYMBOLS $F_A=0$ $F_C=0$ $F_P=0$	GENERAL TOLERANCES (UNLESS SPECIFIED)		DIMENSION STYLE MM ONLY	SCALE 10:1	DESIGN UNITS METRIC	THIRD ANGLE PROJECTION		
		4 PLACES ± --- ± --- 3 PLACES ± --- ± --- 2 PLACES ± 0.15 ± --- 1 PLACE ± 0.20 ± --- 0 PLACE ± --- ± ---	mm INCH ± --- ± --- ± --- ± --- ± --- ± --- ± --- ± ---	DRAWN BY WJHUO	DATE 2012/12/18	TITLE SMA55 CAMERA SOCKET BOTTOM CONTACT			
		DRAFT WHERE APPLICABLE MUST REMAIN WITHIN DIMENSIONS		APPROVED BY AYIN	DATE 2013/01/08	MATERIAL NO. SEE TABLE			
				SIZE A3		DOCUMENT NO. SD-105200-001			
				SHEET NO. 1 OF 2					
THIS DRAWING CONTAINS INFORMATION THAT IS PROPRIETARY TO MOLEX INCORPORATED AND SHOULD NOT BE USED WITHOUT WRITTEN PERMISSION									

9 8 7 6 5 4 3 2 1



A TYPE PCB LAYOUT FOR PRODUCT NO.
 1052000001,1052000002,1052000003,
 1052000004,1052000005
 TOLERANCE:0.05mm



B TYPE PCB LAYOUT FOR PRODUCT NO.
 1052000006,1052000007,
 1052000008,1052000009
 TOLERANCE:0.05mm

RELEASED EC NO: SH2013-0196 DRW: WJHUO 2012/12/18 CHKD: APPR: AYIN 2013/01/08	REV DESCRIPTION	QUALITY SYMBOLS	GENERAL TOLERANCES (UNLESS SPECIFIED)		DIMENSION STYLE		SCALE	DESIGN UNITS	THIRD ANGLE PROJECTION		
		$\nabla = 0$ $\nabla = 0$ $\nabla = 0$	mm	INCH	MM ONLY	10:1	METRIC	DRAWN BY: WJHUO DATE: 2012/12/18 CHECKED BY: DATE: APPROVED BY: AYIN DATE: 2013/01/08		TITLE SMIA55 CAMERA SOCKET BOTTOM CONTACT molex DOCUMENT NO. SD-105200-001 SHEET NO. 2 OF 2	
		4 PLACES ± --- ± --- 3 PLACES ± --- ± --- 2 PLACES ± 0.15 ± --- 1 PLACE ± 0.20 ± --- 0 PLACE ± --- ± ---									
		A		ANGULAR ± 3° DRAFT WHERE APPLICABLE MUST REMAIN WITHIN DIMENSIONS	MATERIAL NO. 9999999999						