

OGA DIAGONAL: 20.46 [519.68]  
 VA DIAGONAL: 19.74 [501.35]  
 PA DIAGONAL: 18.61 [472.61]

TOP LEVEL NUMBER	US NUMBER	TYPE	DIM "A" (TOTAL GLASS TO CONNECTOR)	A/G FINISH	PROD SPEC
17-8551-204	98-0003-2622-7	FFC	6.00" [152.40]	AG500	23655
17-8551-220	98-0003-3163-1	USB R	6.00" [152.40]	AG500	23655
17-8551-223	98-0003-2624-3	SER	6.00" [152.40]	AG500	23655
17-8551-221	98-0003-3164-9	SER	4.27" [108.46]	AG500	23655
17-8551-205	98-0003-3260-5	FFC	8.00" [203.20]	AG500	23655
17-8551-226	98-0003-3346-2	USB R	8.00" [203.20]	AG500	23655
17-8551-227	98-0003-3261-3	SER	8.00" [203.20]	AG500	23655

ESD CLAMSHELL CASE IS USED WITH ALL NOV, USB AND SER TERMINATIONS.



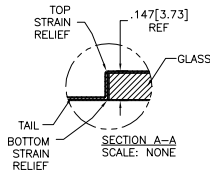
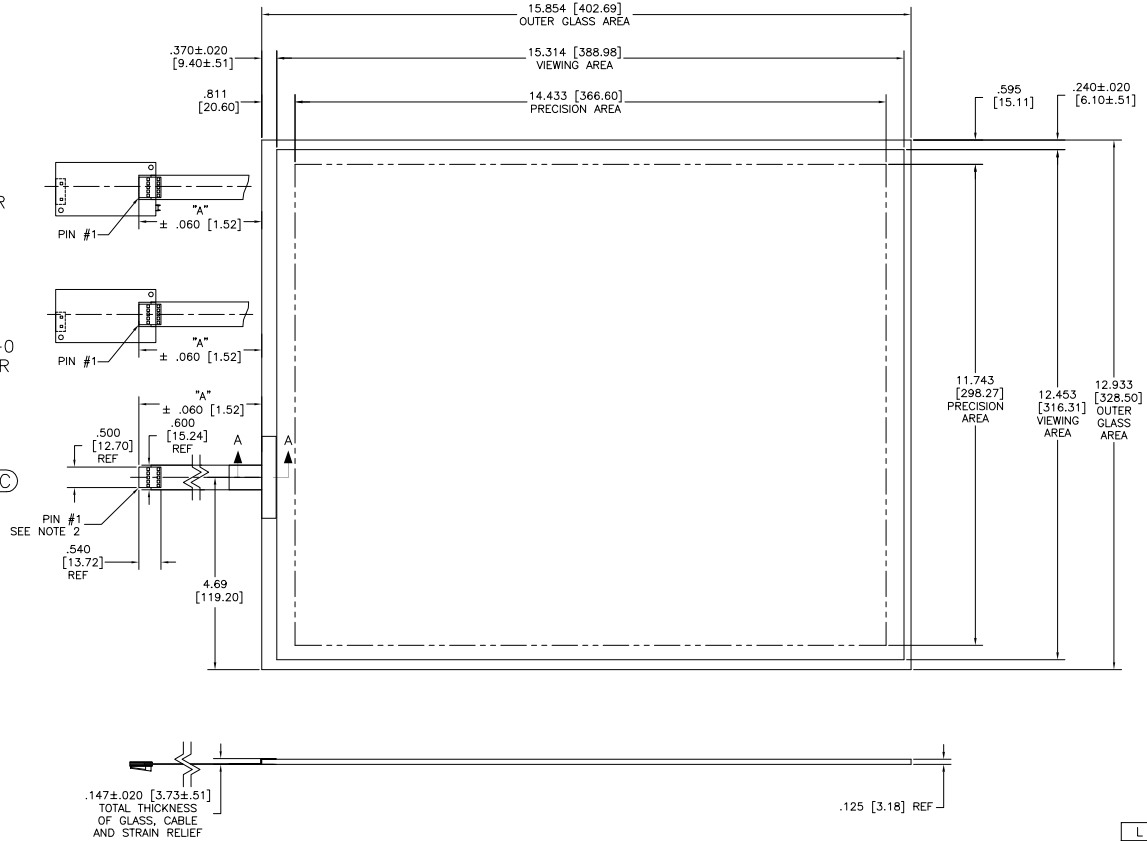
(SER)

EXII-7720SC  
 98-0003-2217-6  
 SERIAL CONTROLLER  
 SOLDER SIDE

(USB R)

EXII-7760UC  
 98-0003-2814-0  
 USB CONTROLLER  
 SOLDER SIDE

(FFC)



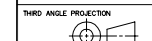
NOTES:

1. WEIGHT OF GLASS IN GRAMS: 1008±10%
2. NICOMATIC HOUSING P/N: OLO5  
 NICOMATIC RECEPTACLES (PINS) MATTE TIN PLATED P/N: 14106-12  
 HOUSING ORIENTED WITH LATCH DOWN

PINOUT	
1	LR
2	LL
3	SHLD
4	UL
5	UR

UNITS INCHES [MM]

TOLERANCES UNLESS OTHERWISE SPECIFIED  
 .X ±  
 .XX ±.03 [.76]  
 .XXX ±.015 [.38]  
 ANGLES ±1°



DO NOT SCALE DRAWING

SCALE 1 = 1



3M TOUCH SYSTEMS  
 METHUEN, MA  
 USA  
 © COPYRIGHT 2004  
 THIS DOCUMENT IS COPYRIGHTED PROPERTY OF THE  
 3M COMPANY AND MAY NOT BE REPRODUCED  
 WITHOUT 3M WRITTEN PERMISSION OR USED OR  
 DISCLOSED FOR OTHER THAN 3M AUTHORIZED  
 PURPOSES.

DRAWN K.CROWLEY 9/05

REV	CHANGE NOTICE	DATE	DRW
L	REVISED PER CO 036256	4/13	SB
K	REVISED PER CO 033533	9/11	SB
J	REVISED PER CO 033454	8/11	SB

TITLE  
 MARKETING DRAWING  
 SCT32NN 19.74"

CAD FORMAT AUTOCAD SHEET 1 OF 1

SIZE C DOCUMENT NO. 28364-MKT REV L