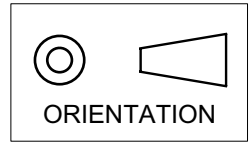


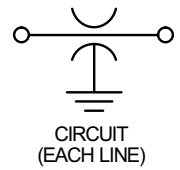
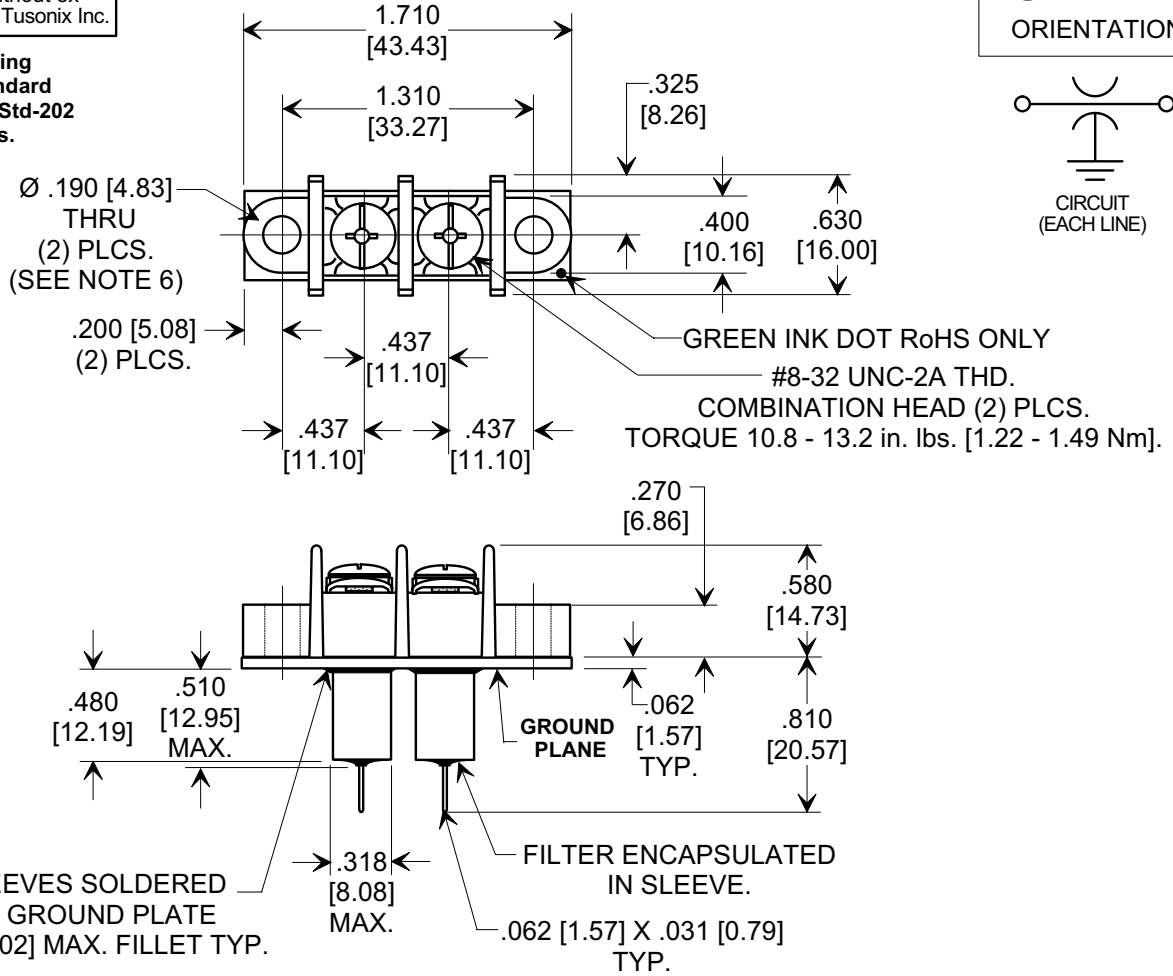
**MARKETING SALES DRAWING**

**DIMENSIONS IN INCHES - DO NOT SCALE THIS DRAWING**  
**DIMENSIONS IN METRIC - [ ]**

This drawing is the property of Tusonix, Inc., and may not be used, reproduced, published or disclosed to others without expressed authorization by Tusonix Inc.



**Electrical Testing**  
**per Tusonix standard**  
**test plans and Mil-Std-202**  
**Test Methods.**



**NOTES:**

1. TUSONIX STANDARD PART NUMBER: 7602-602. TUSONIX RoHS COMPLIANT PART NUMBER: 7602-602 LF. CUSTOMER MUST SPECIFY STANDARD OR RoHS PART NUMBER WHEN ORDERING.
2. LEAD FINISH: MATTE TIN.
3. PLATE MATERIAL: .062" COPPER ALLOY, MATTE TIN FINISH.
4. PART MARKING: PART NUMBER, DATE CODE AND UL RECOGNITION: WHITE INK. RoHS PART: GREEN INK DOT ON TOP OF GROUND PLATE AS SHOWN.
5. MAX. SOLDERING TEMPERATURE 500°F [260°C].
6. BLOCK MOUNTING: RECOMMENDED MOUNTING SCREWS (# 8 PAN HEAD). TORQUE 4.5 - 5.5 in. Lb. [0.51 - 0.62 Nm].
7. MOLDED MATERIAL: HIGH TEMPERATURE THERMOPLASTIC (PBT), UL RATED 94 V-O.
8. RATED FOR DIRECT CURRENT APPLICATIONS ONLY.
9. U.L. FILE NO: E201344.

| Cx (pF)       | WORKING VOLTAGE<br>-40°C TO +125°C | I <sub>DC</sub> | D.W.V.                | I.R. MIN. | TYPICAL NO LOAD INSERTION LOSS<br>(dB) AT 25°C PER MIL-STD-220 |         |       |        |
|---------------|------------------------------------|-----------------|-----------------------|-----------|--|---------|-------|--------|
|               |                                    |                 |                       |           | 10 MHz   | 100 MHz | 1 GHz | 10 GHz |
| 12,000/27,000 | 150 VDC                            | 30 Amps         | 2121 VDC<br>(60 SEC.) | 10 G Ω    | 28   | 45      | 70    | 70     |

|   |  |   |   |
|---|--|---|---|
| REVISION RECORD   | Original Release<br>C.O. <b>20030718-1-03</b>                        | TOLERANCES unless otherwise specified<br>2 PLC. DECIMAL ± N/A<br>3 PLC. DECIMAL ± .030 [0.76]<br>ANGLES ± N/A | Title<br><b>"C" FEED - THRU<br/>TERMINAL BLOCK<br/>2 POSITION<br/>(UL RECOGNIZED)</b> |
|   | Cx WAS 15,000 MIN.<br>S.M. 08-24-05                                  |   |   |
|   | <b>20050818-12-21</b><br>ADDED NOTES 1-4 & RE-NUMBERED S.M. 09-29-05 |   |   |
|   | <b>20050922-1-10</b><br>Cx WAS 12,000/18,000.<br>S.M. 10-19-05       |   |   |
| <b>20051006-3-03</b><br>NOTE 4 REVISED. ADDED INK DOT. REVISED TORQUE.<br>S.M. 01-23-06 | Drawn<br>S.M. 07-31-03   | Scale<br>FULL   | Approved<br>R.C. 07-31-03   |
| <b>20060103-1-09</b><br>DIA. .190 NOTE WAS 2.<br>S.M. 01-11-07                          |  |   |   |
| <b>20070109-2-01</b>  |  |   |   |
|   |  |   |   |
|   | <b>TUSONIX</b><br>TUCSON, ARIZONA                                    | <b>A</b>  | <b>7602-602</b>   |

X-2015 Rev-0