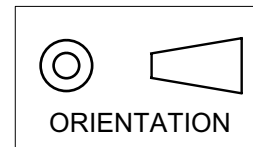
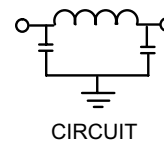
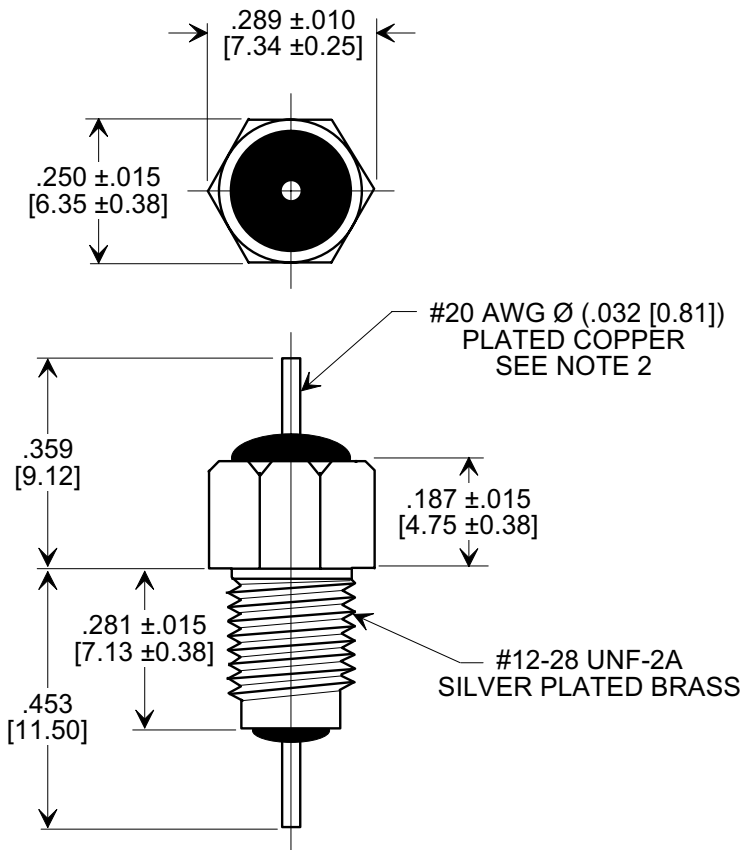


This drawing is the property of Tusonix, Inc., and may not be used, reproduced, published or disclosed to others without expressed authorization by Tusonix Inc.

**MARKETING SALES DRAWING**  
**DIMENSIONS IN INCHES - DO NOT SCALE THIS DRAWING**  
**DIMENSIONS IN METRIC - [ ]**



**Electrical Testing**  
per Tusonix standard  
test plans and Mil-Std-202  
Test Methods.



**NOTES:**

- TUSONIX STANDARD PART NUMBER: 4204-000.  
TUSONIX RoHS COMPLIANT PART NUMBER: 4204-000 LF.  
CUSTOMER MUST SPECIFY STANDARD OR RoHS PART NUMBER WHEN ORDERING.
- LEAD FINISH: STANDARD PART #: 60/40 SOLDER PLATED COPPER.  
RoHS PART #: SILVER PLATED COPPER.
- PART MARKING: TRADEMARK AND VARIATION NUMBER ON HEX FLATS.  
STANDARD PART: BLACK INK. RoHS PART: GREEN INK.
- SUPPLIED WITH SILVER PLATED COPPER ALLOY HEX NUT AND INTERNAL TOOTH LOCK WASHER.

MIN. CAP. (pF)	WORKING VOLTAGE (WVdc)		CURRENT IDC (A)	I.R. MIN. @ 100 (VDC)	DWV (VDC)	MINIMUM NO LOAD INSERTION LOSS (dB) AT 25°C PER MIL-STD -220			
	85°C	125 °C				10 MHz	100 MHz	1 GHz	10 GHz
1500	350	200	10	10 G Ω	700	5	45	70	70

<b>REVISION RECORD</b> Original Release C.O. <b>2898</b> RDN TO COMP FMT & ADDED METRIC. S.M. 04-11-00 <b>20000412-1-01</b> ADDED NOTES 1-3, IR & DWV. S.M. 02-02-06 <b>20000412-1-01</b>	0	TOLERANCES unless otherwise specified 2 PLC. DECIMAL ± // // // 3 PLC. DECIMAL ± .031[.079] ANGLES ± // // //	Title <b>BUSHING STYLE EMI FILTER</b>	
	1		Drawn S.M. 04-11-00 Scale <b>3 X</b>	
	2	Approved B.M. 04-11-00		
	<b>TUSONIX</b> TUCSON, ARIZONA		<b>A</b>	<b>4204-000</b>

X-2015 Rev-0