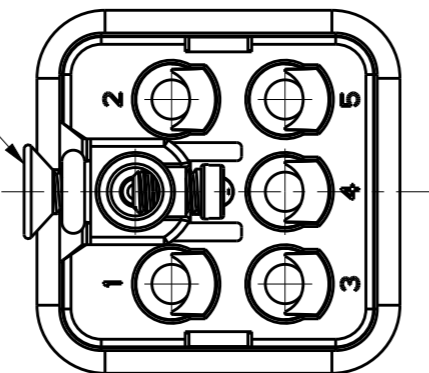


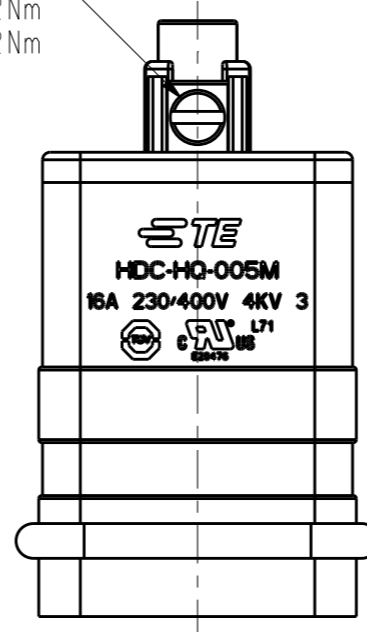
REVISIONS

P	LTR	DESCRIPTION	DATE	DWN	APVD
B1		ECR-15-016505	11NOV2015	DL	CW
B2		ECR-16-009730	06JUL2016	BS	CW
B3		ECR-16-018198	10FEB2017	QY	CW
B4		ECR-18-016602	08NOV2018	CH	CW

M3 SCREW, RECOMMENDED  
TIGHTENING TORQUE 0.2Nm  
M3螺丝, 推荐锁紧力矩0.2Nm



M3 SCREW, RECOMMENDED  
TIGHTENING TORQUE 0.2Nm  
M3螺丝, 推荐锁紧力矩0.2Nm

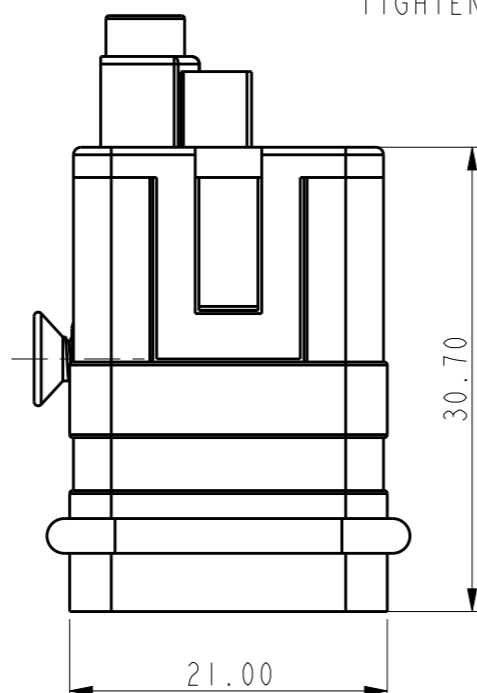
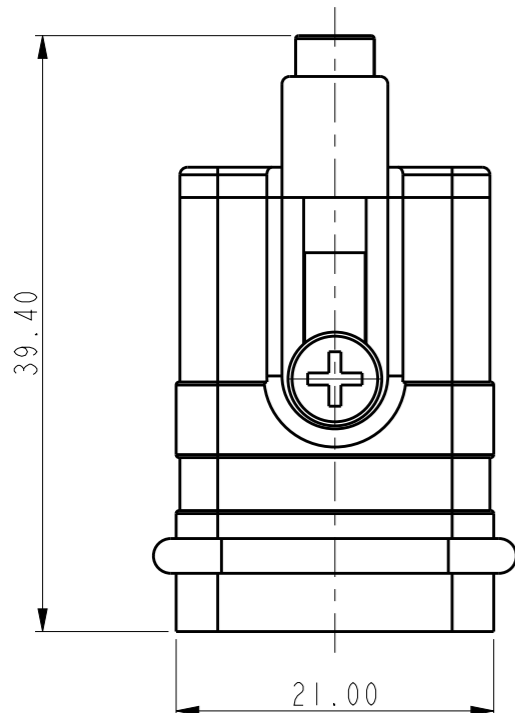


NOTES:

- TECHNICAL CHARACTERISTICS:  
INSULATION MATERIAL: PC  
RATED VOLTAGE: 400V  
RATED CURRENT: 16A  
INSULATION RESISTANCE:  $\geq 400M\Omega$   
RATED IMPULSE VOLTAGE: 4KV  
POLLUTION DEGREE: 3  
FLAMMABILITY: UL94V-0  
MATING CYCLES: 500 CYCLES  
WIRE RANGE: 0.14-4.0mm<sup>2</sup> (26-12AWG)  
CONTACT TYPE: CRIMP CONTACT
- CONTACT NEED TO BE ORDERED SEPARATELY.  
(ORDER No. REFER TO DRAWING: T20300X10XX000)

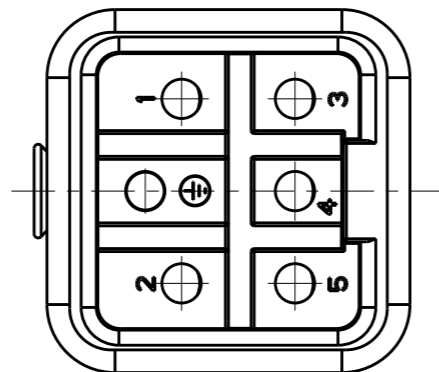
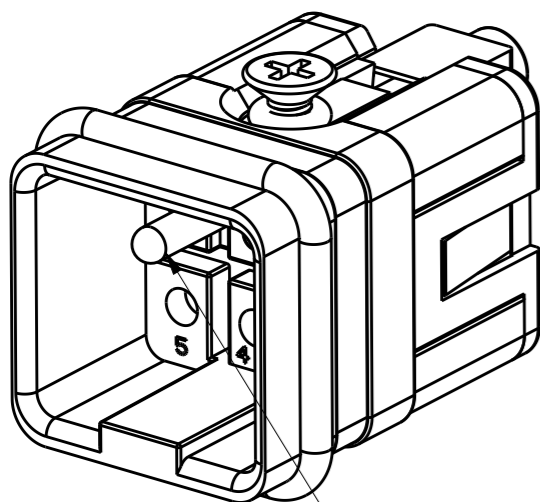
注释:

- 技术参数:  
绝缘材料: PC  
额定电压: 400V  
额定电流: 16A  
绝缘电阻:  $\geq 400M\Omega$   
额定脉冲电压: 4KV  
污染等级: 3  
阻燃等级: UL94V-0  
插拔次数: 500次  
接线范围: 0.14-4.0mm<sup>2</sup> (26-12AWG)  
接线类型: 冷压接
- 端子需要单独订购。  
(订货号参考图面: T20300X10XX000)




TYPE-1: T2080052101-000, TE LOGO  
类型-1: T2080052101-000, TE LOGO

TYPE-2: T2080052101-001, STAINLESS STEEL SCREW, TE LOGO  
类型-2: T2080052101-001, 不锈钢螺丝, TE LOGO



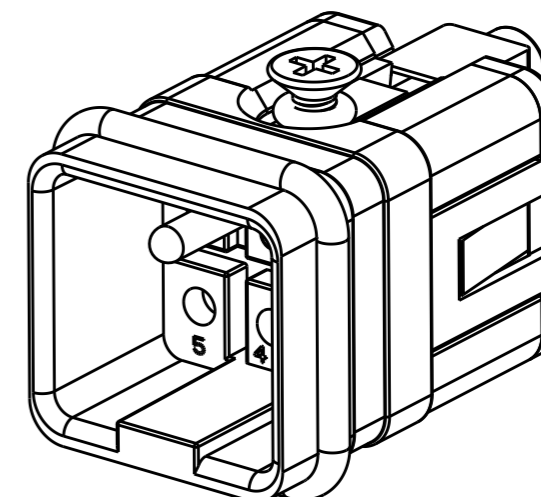
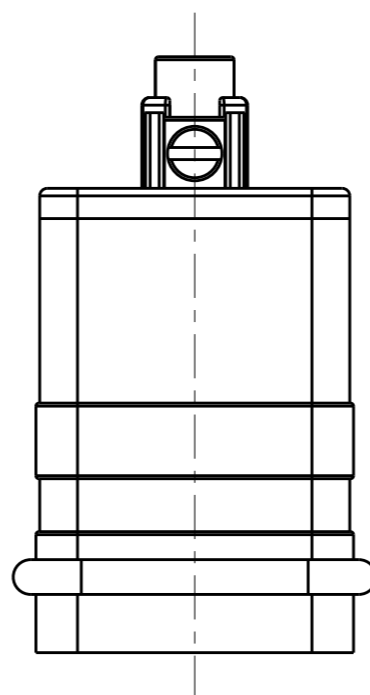
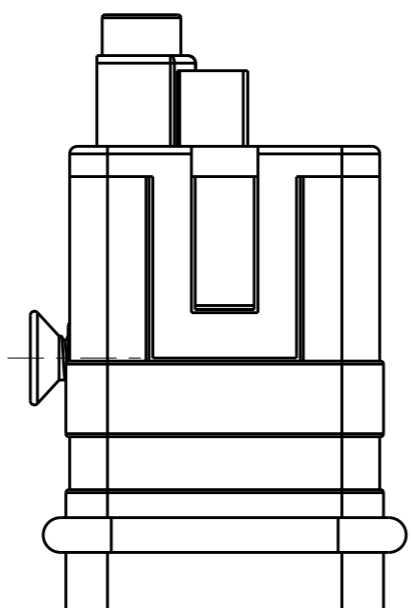
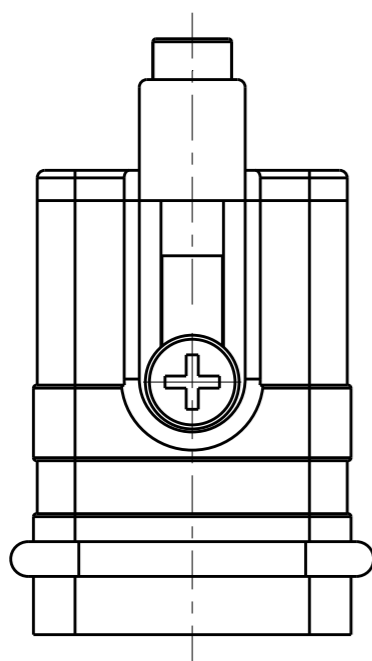
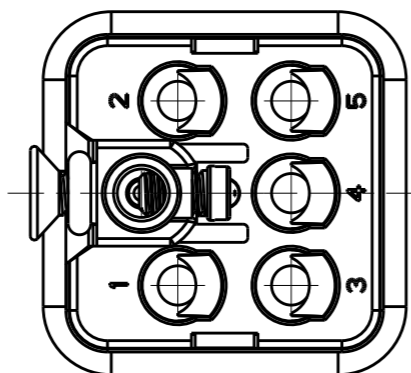
GROUNDING CONTACT TYPE: SCREW CONTACT  
GROUNDING CONTACT FINISH: SILVER PLATED  
WIRE RANGE: 2.5mm (AWG14)  
接地端子类型: 螺丝连接端子 / 接地端子表面处理: 镀银 / 接线范围: 2.5mm<sup>2</sup> (AWG14)

THIS DRAWING IS A CONTROLLED DOCUMENT.		DWN DAVID.WANG 10JAN2015	 TE Connectivity	
DIMENSIONS: mm		CHK CHRIS.WANG 10JAN2015		
TOLERANCES UNLESS OTHERWISE SPECIFIED:		APVD XIANG.XU 10JAN2015	NAME HQ-005-M	
0 PLC ±-		PRODUCT SPEC 108-137054	SIZE A3	
1 PLC ±-		APPLICATION SPEC 114-137054	CAGE CODE 00779	DRAWING NO. C-T2080052101000
2 PLC ±-		WEIGHT -	RESTRICTED TO -	
3 PLC ±-			SCALE 1:1	
4 PLC ±-			SHEET 1 OF 2	
ANGLES ±-			REV B4	
FINISH -		Customer Drawing		

REVISIONS

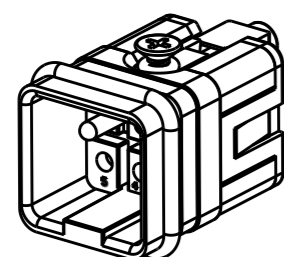
P	LTR	DESCRIPTION	DATE	DWN	APVD
-	-	SEE SHEET 1	-	-	-

NOTES:  
SEE SHEET 1



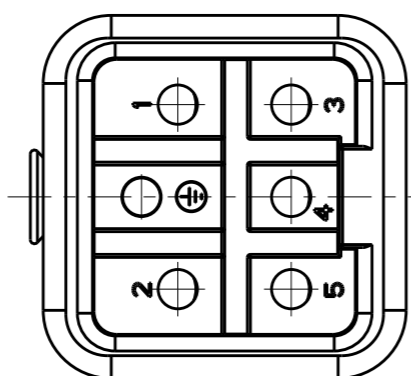
TYPE-4: T2080052101-003, THIS TYPE IS SAME AS TYPE-1, ONLY DIFFERENT MALE GROUNDING CONTACT.  
 类型-4: T2080052101-003, 此类型同类型-1, 只是公接地针不同.

ALL DIMENSIONS ARE SAME AS TYPE-1, EXCEPT THOSE DEFINED IN THIS TYPE.  
 除了在本类型中定义的尺寸外, 其它尺寸同类型-1



SCALE 1:1

TYPE-3: T2080052101-002, STAINLESS STEEL SCREW, NO LOGO  
 类型-3: T2080052101-002, 不锈钢螺丝, 无LOGO



PART NUMBER 料号		PART DESCRIPTION 描述	TYPE 类型
T2080052101-003	HQ-005-M	HQ-005 MALE INSERT HQ-005 公插	TYPE-4 类型-4
T2080052101-002	HQ-005-M	HQ-005 MALE INSERT, STAINLESS STEEL SCREW, NO LOGO HQ-005 公插, 不锈钢螺丝, 无LOGO	TYPE-3 类型-3
T2080052101-001	HQ-005-M	HQ-005 MALE INSERT, STAINLESS STEEL SCREW HQ-005 公插, 不锈钢螺丝	TYPE-2 类型-2
T2080052101-000	HQ-005-M	HQ-005 MALE INSERT HQ-005 公插	TYPE-1 类型-1

THIS DRAWING IS A CONTROLLED DOCUMENT.		DWN DAVID.WANG 10JAN2015			
DIMENSIONS: mm		CHK CHRIS.WANG 10JAN2015			NAME HQ-005-M
TOLERANCES UNLESS OTHERWISE SPECIFIED: 0 PLC ±- 1 PLC ±- 2 PLC ±- 3 PLC ±- 4 PLC ±- ANGLES ±-		APVD XIANG.XU 10JAN2015			PRODUCT SPEC 108-137054
MATERIAL -		FINISH -			APPLICATION SPEC 114-137054
		WEIGHT -	SIZE A3	CAGE CODE 00779	
		Customer Drawing	DRAWING NO C-T2080052101000	RESTRICTED TO -	
			SCALE 2:1	SHEET 2 OF 2	
				REV B4	