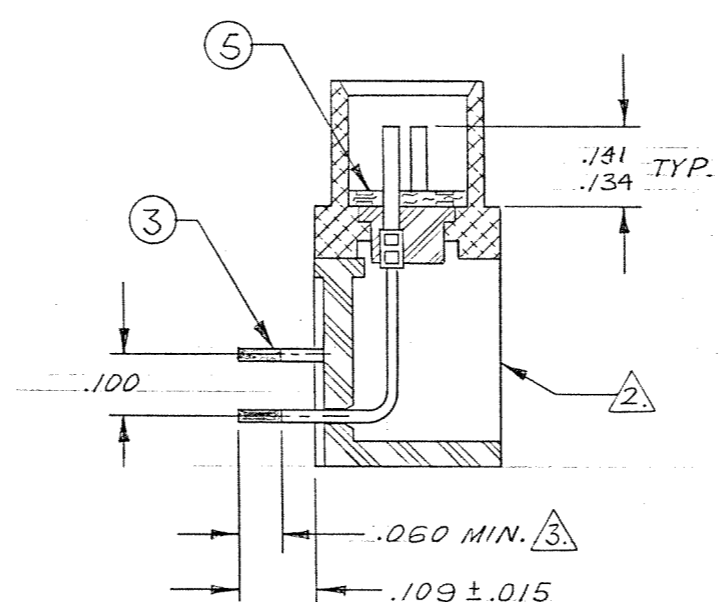
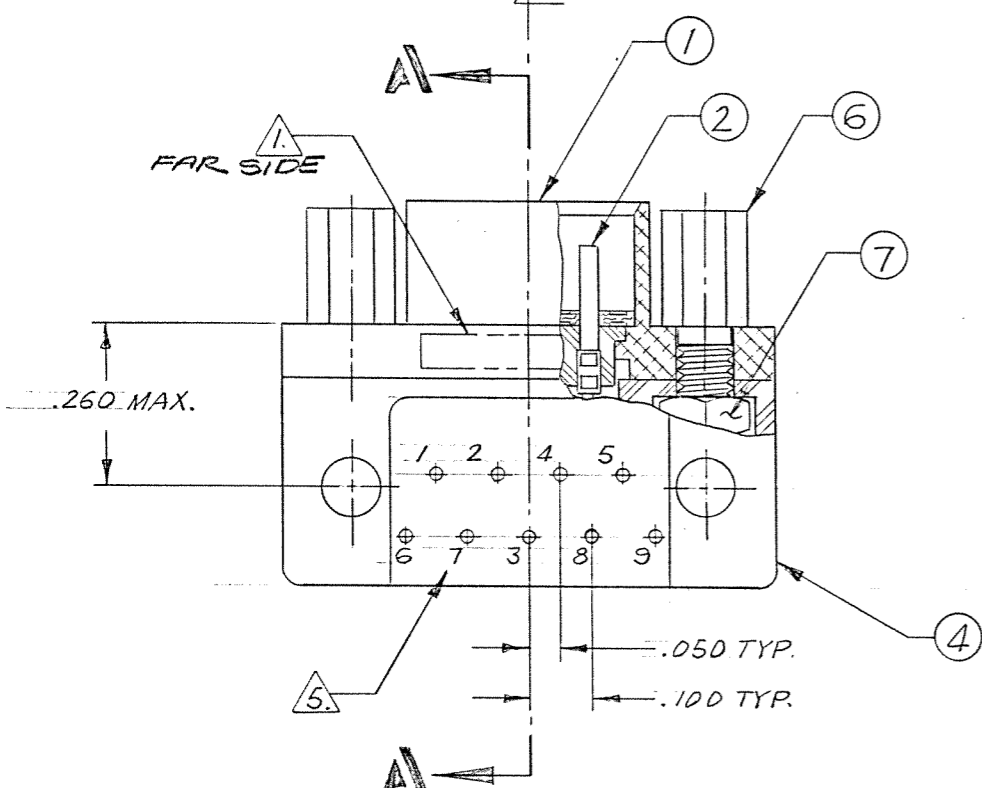
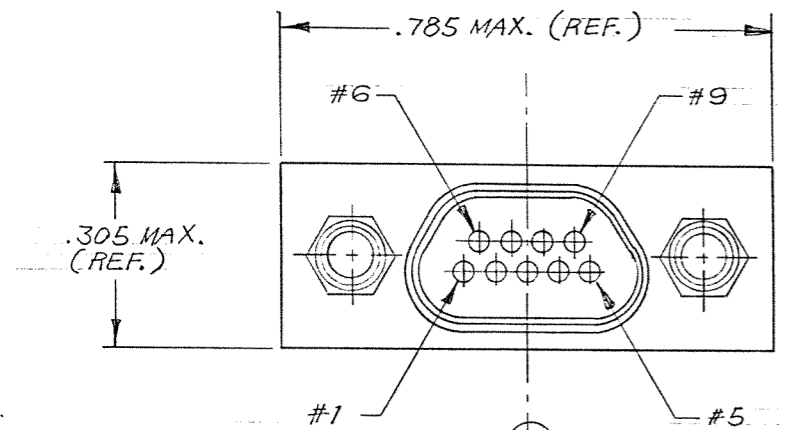


| REVISIONS | | | | | |
|-----------|-----|-------|------------------------------|----------|----------|
| ZONE | LTR | ECN | DESCRIPTION | DATE | APPROVED |
| | A | 28678 | RELEASE FOR PRODUCTION Y.C. | 4-16-84 | |
| | B | 37265 | MKG. UPDATE, SEE ECN 172 | 8/25/87 | |
| C-2 | C | 42680 | IS: .134/.141 WAS: .121/.135 | 11-16-04 | |



CAUTION
 UNINSULATED WIRES USED IN THIS ASSEMBLY. MUST PASS 1000 VOLT "HI-POT" BEFORE AND AFTER POTTING.

- NOTES: UNLESS OTHERWISE SPECIFIED.
- 1. MARKING: MARK OPPOSITE SIDE PER MEP 203-12
 - 2. ASSEMBLE ALL ITEMS (ITEM #1 THRU #7), THEN FILL WITH EPDXY AROUND HEX NUT & T.B. BLOCK BACKPOTTING AS SHOWN. USE HYSOL #4215 & #3561.
 - 3. TERMINAL WIRES TO BE SOLDER COATED .003 MAX. (PER SIDE) IN LOCATION SHOWN. SOLDER TO BE QR-S-571, TYPE Sn63, FLUX PER MIL-F-14256, TYPE A.
 - 4. CRIMP LEADS INTO CONTACTS PER MEP 302-05.
 - 5. TERMINAL IDENT NOS AS SHOWN (VIEWED FROM THE MOUNTING SURFACE) DO NOT ACTUALLY APPEAR ON THE PART (FOR IDENTIFICATION ONLY).

3-1532133-2

| QTY REQD | CODE IDENT | PART OR IDENTIFYING NO. | NOMENCLATURE OR DESCRIPTION |
|--|------------|---------------------------------------|---|
| PARTS LIST | | | |
| UNLESS OTHERWISE SPECIFIED DIMENSIONS ARE IN INCHES TOLERANCES ARE: FRACTIONS DECIMALS ANGLES ± .XX ± ± .XXX ± .005 | | CONTRACT NO. | MALCO A MICRODOT COMPANY, INC. 220 PASADENA AVE., SO. PASADENA, CALIF. 91030 |
| MATERIAL | | APPROVALS DATE | |
| FINISH | | DRAWN YONG CHU 3/27/84 | METAL SHELL 90° LO-PROFILE CONNECTOR (MIL-C-83513/) MCK-**-P-9SRT1 (WITH JACKPOST) |
| NEXT ASSY USED ON | | CHECKED [Signature] 4/11/84 | |
| APPLICATION | | PR. ENG [Signature] 8-13-82 | PROD. CODE 845 |
| DO NOT SCALE DRAWING | | APPD. [Signature] | CODE M |
| | | SIZE CODE IDENT NO. DRAWING NO. | |
| | | C 98278 094-4106-7000 | |
| | | SCALE SHEET / OF / | |