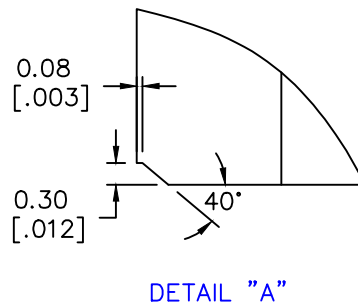
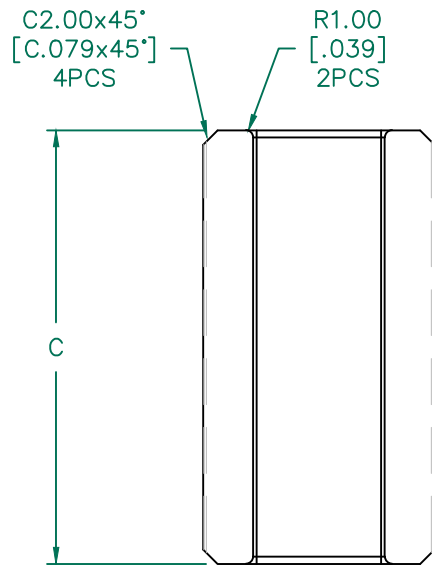
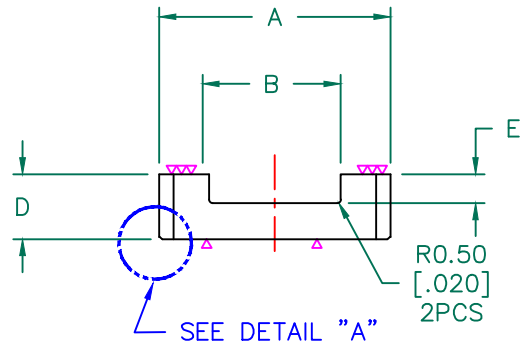


NET IMPEDANCE (Z)

Frequency	0.5 MHz	1 MHz	5 MHz
Nominal (REF)	65 Ω	127 Ω	87 Ω
Minimum	48 Ω	95 Ω	65 Ω



FERRITE CORE DIMENSIONS (SPEC): mm [in]

A	32.00 [1.260]	+ 0.60 [.024]
B	18.20 [.717]	+ 0.40 [.016]
C	60.00 [2.362]	+ 1.00 [.039]
D	9.00 [.354]	+ 0.20 [.008]
E	4.00 [.157]	+ 0.25 [.010]

WEIGHT/1000 62.47 kgs [137.70 Lbs]

NOTES: UNLESS OTHERWISE SPECIFIED

1. COSMETIC SPECIFICATION REFER TO WI-QA-038.
2. THE CONTACT SURFACE NEED TO BE POLISHED.



DIMENSIONS ARE IN mm[INCHES].				This print is the property of Laird Tech. and is loaned in confidence subject to return upon request and with the understanding that no copies shall be made without the written consent of Laird Tech. All rights to design or invention are reserved.			
PROJECT/PART NUMBER:				REV	PART TYPE:	DRAWN BY:	
35U1260-120				A	CNZ CORE	Jcai	
DATE:			SCALE:	MATERIAL:			
09/15/17			1 : 1	Ferrite			
REV	DESCRIPTION	DATE	INT	CAD #	TOOL #		
A	ORIGINAL DRAFT	09/15/17	Jcai	35U1260-120-A	U1260		