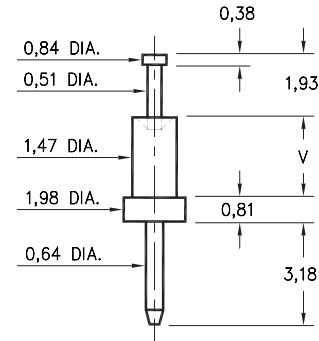


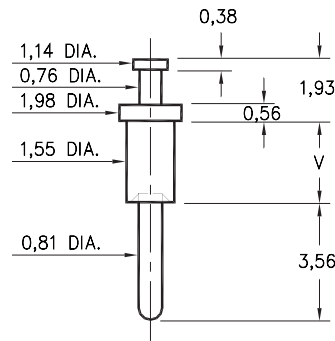
2318



2318-X-00-XX-00-00-07-0
Swage mount in 1,57 hole

- X -	Board Thickness	Length V
1	0,79	1,30
2	1,57	2,08
3	2,39	2,87

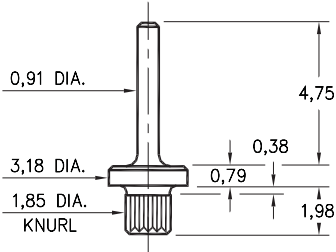
2309



2309-X-00-XX-00-00-07-0
Swage mount in 1,63 hole

- X -	Board Thickness	Length V
1	0,79	13,7
2	1,57	2,13
3	2,39	2,92
4	3,18	3,73

2514



2514-2-00-XX-00-00-07-0
Press-fit in 1,78 mounting hole

SPECIFICATIONS

PIN MATERIAL:
Brass Alloy 360, 1/2 Hard
Swage pins are annealed

DIMENSION IN INCHES
TOLERANCES ON:
LENGTHS: $\pm 0,13$
DIAMETERS: $\pm 0,05$
ANGLES: $\pm 2^\circ$

ORDER CODE: XXXX - X - 00 - XX - 00 - 00 - 07 - 0

BASIC PART #

SPECIFY PIN FINISH:

- 01 5,08 μ m TIN/LEAD OVER NICKEL
- ◇ 80 5,08 μ m TIN OVER NICKEL (RoHS)
- ◇ 44 7,62 μ m SILVER OVER COPPER (RoHS)
- ◇ 50 7,62 μ m ELECTRO-SOLDER (RoHS) (60/40 SnPb)

